

# VERANDA

JULY-AUGUST 2011

## RELAXED GLAMOUR





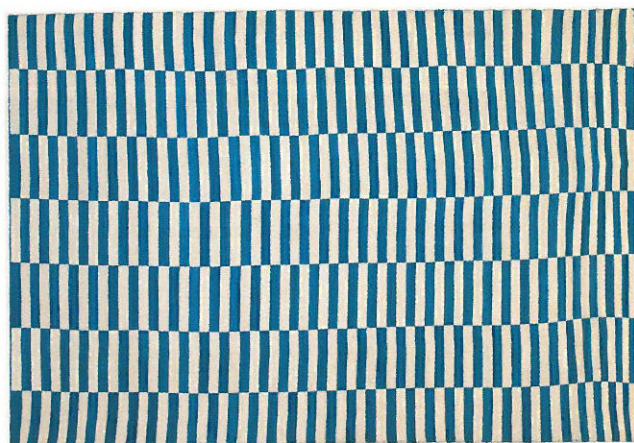


## BACKYARD COUTURE

AT NEARLY 3 FEET TALL AND WEIGHING 34 POUNDS, THE WHITE OAK URN DE FEU FROM ACCENTS OF FRANCE IS NO SHRINKING VIOLET. A REPRODUCTION OF AN 18TH-CENTURY URN, IT'S BOTH A STATEMENT PIECE AND A FOCAL POINT, BRINGING GRAVITAS TO THE GARDEN. \$3,694. 323-653-4006; [ACCENTS-OFFRANCE.COM](http://ACCENTS-OFFRANCE.COM).

## HIGH STYLE UNDERFOOT

Ralph Lauren Home's *Cameron Stripe* rug updates the classic kilim with a flat-weave banana silk that gives the graphic statement a rich sheen. Available in Bark/Cocoa, Sand/Surf, Coal/Surf and Indigo/Surf (pictured). Prices start at \$515 for 4x6. 888-475-7674; [ralphlaurenhome.com](http://ralphlaurenhome.com).



## PARTY OF TWELVE

The sleek-yet-rustic teak and stainless steel *Sardinia Dining Table* by Holly Hunt chicly weathers the great outdoors. It's also a long and lanky 8½ feet, so it can accommodate plenty of guests and platters for a festive alfresco feast. Price upon request. 800-320-3145; [hollyhunt.com](http://hollyhunt.com).

## PAINTERLY APPEAL

The latest from Bunny Williams's BeeLine Home is an inspired take on Chinese export porcelain: the 35" double-gourd ceramic *Brush Stroke Lamp* in blue and white, set on a hand-carved gilt wood base. Price upon request. 212-935-5930; [beelinehome.com](http://beelinehome.com).



## CURIOSITY SHOP

For his second upholstery line for Duralee's Highland Court, Philip Gorrivan distilled the faded grandeur of windswept beaches and classical architecture into a range of luxurious neutrals, such as the faux bois *London Plane*. \$136/yard. 800-275-3872; [duralee.com](http://duralee.com).



**FANCY LEGWORK** INSPIRED BY JOHN DICKINSON'S HOOVED TABLES AND CHAIRS, DESIGNER MYRA HOEFER CREATED HER OWN *CHÈVRE BENCH*. THE GOAT LEGS ARE HAND-CARVED FROM ACACIA WOOD, AND THE SEAT IS WHITE HAIR-ON-HIDE LEATHER. \$1,800. 707-433-7837; [MYRAHOEFERDESIGN.COM](http://MYRAHOEFERDESIGN.COM).

