

ARCHITECTURAL DIGEST

THE INTERNATIONAL DESIGN AUTHORITY

MAY 2011

Flair for Living

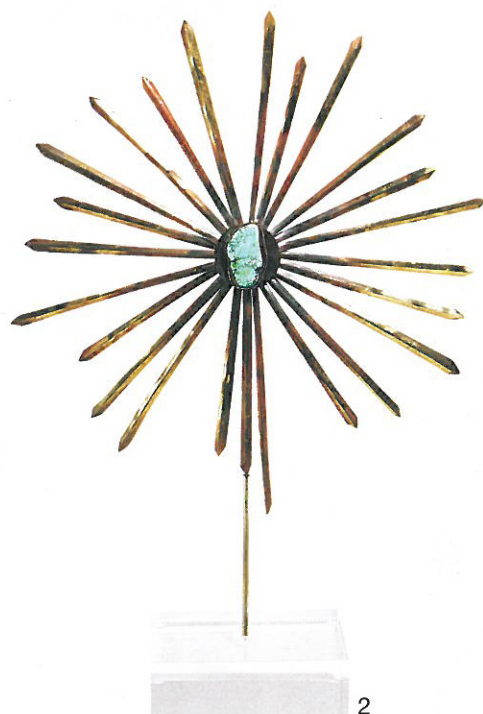
**The Ultimate
Penthouse**

**Building a
Classic Yacht**

**A Romantic
French
Château**



Plus:
**Art & Design
in Berlin**



1 Bunny Williams modeled the open geometric base of BeeLine Home's Silver Guilt cocktail table after a similar Asian antique in her Manhattan apartment. It measures 42" l. x 17" h. x 29" d. \$2,100; beelinehome.com, 212-935-5930

2 Designer Michelle Nussbaumer's Splendor objects combine brass sunbursts with gems such as turquoise and jade. Pieces range from 18.5" to 20" h. From \$950 at Ceylon et Cie; ceylonetcie.com, 214-742-7632

3 Woven-leather handles complement the gleaming surfaces of Airedelsur's Salta nickel-silver bowls. They come in 5.5"- and 8"-dia. sizes. \$570 and \$770, respectively, at Etc; etc-miami.com, 305-673-4382

4 Bleus d'Ailleurs porcelain tableware by Hermès mixes playful cobalt-blue-and-white patterns. Shown, from top, are the bread-and-butter, dessert, dinner, and presentation plates. \$90-\$295 each; hermes.com, 800-441-4488

5 An angled ash frame lends minimalist appeal to the Fauteuil lounge chair by Roche Bobois. Its cushions come in an array of fabrics or c.o.m.; other wood finishes are available. From \$3,485; roche-bobois.com, 212-889-5304 →