

## GPS ANTENNA INSTALLATION

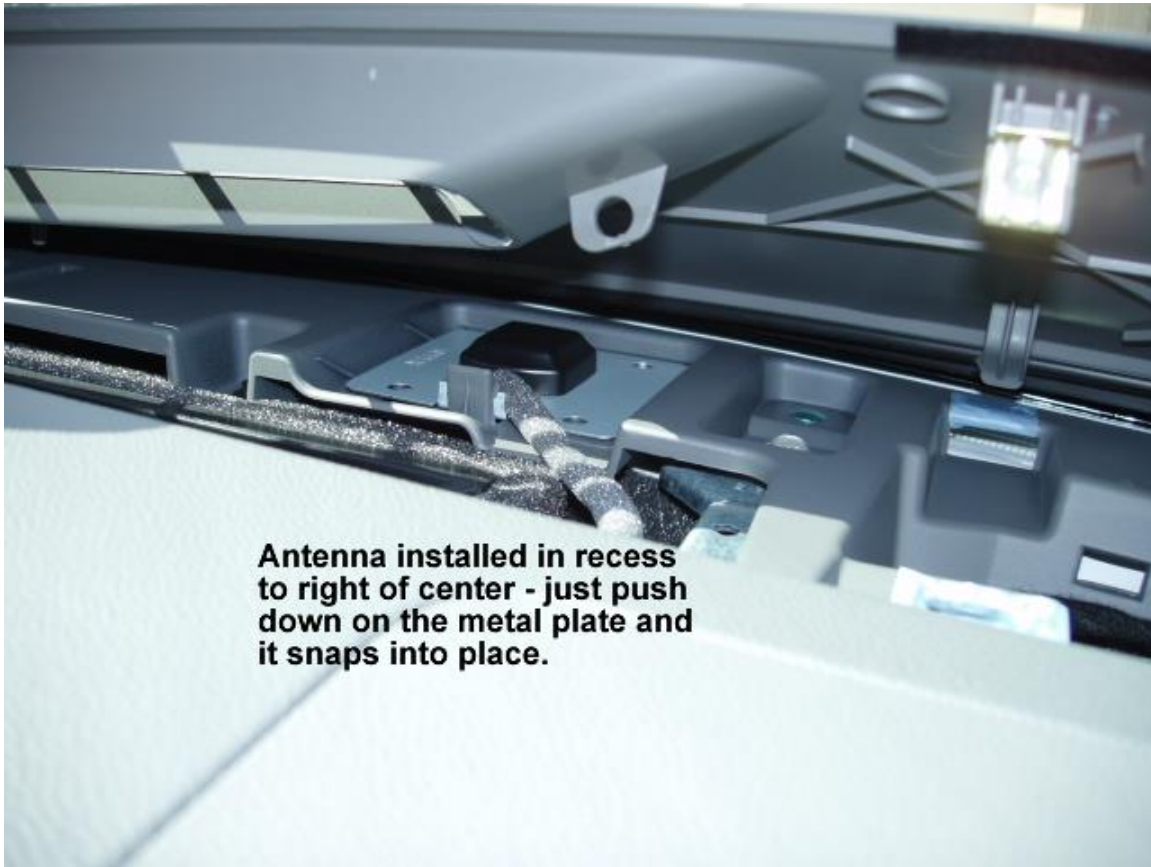


Using a plastic trim tool or a screwdriver, pry up the top dash panel as much as possible to install the GPS antenna module.

### **NOTE:**

- Not all of the top dash panels remove as shown. Some require the removal of the A-Pillar panels first. The A-Pillar panels are the panels that go along the side of your windshield.

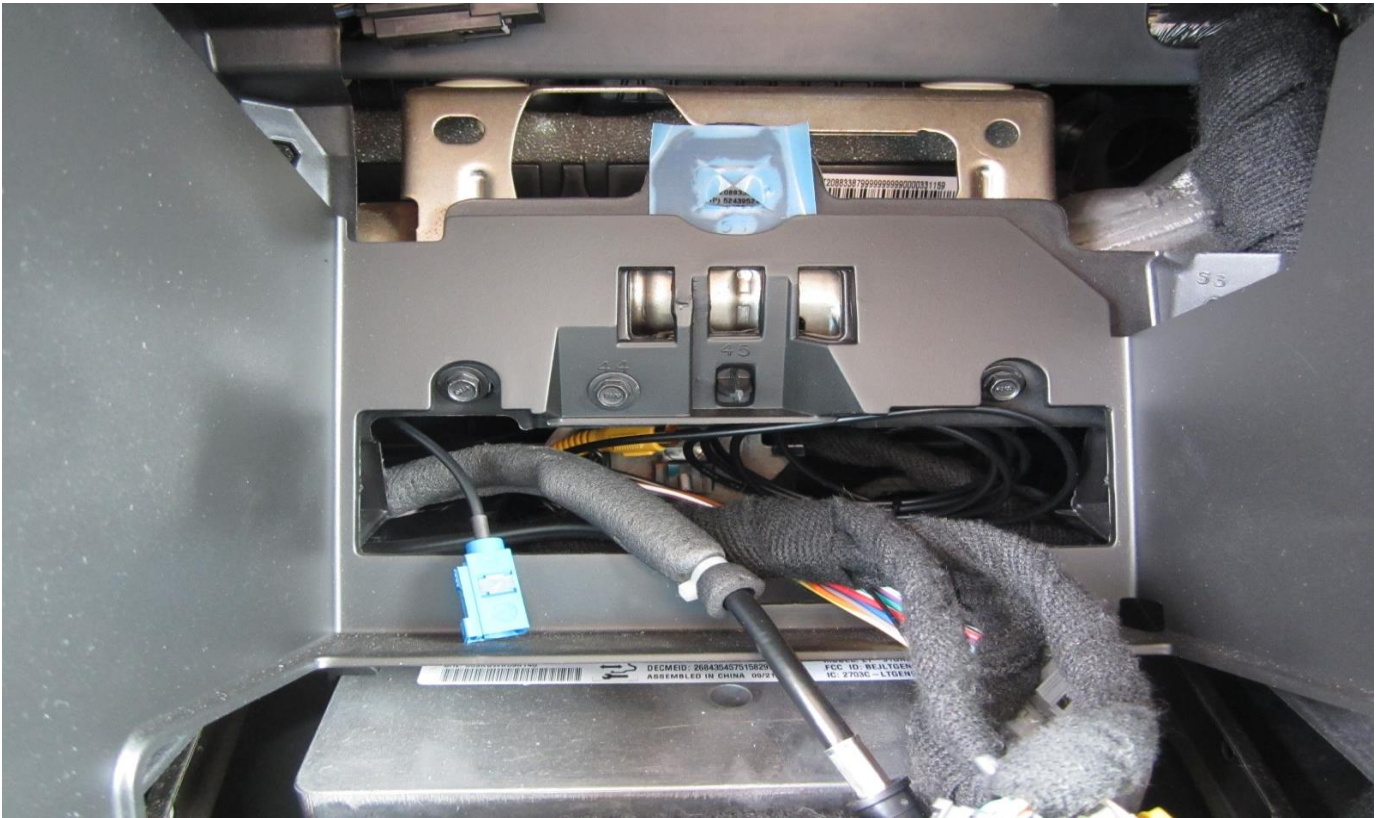
## GPS ANTENNA PLACEMENT



Place the antenna in the recessed area just to the right of the center. The metal portion of the antenna will fit into the plastic slot towards the windshield side and then just snap into place. Route the cable down the hole just to the right front of the recessed area as shown in the picture. Be careful **not** to severely bend the cable since the internal wire can break.

Also, keep in mind that window tint can interfere with GPS satellite reception.

## GPS ANTENNA CABLE ROUTING



After antenna placement, feed the antenna cable down to the hole where the radio was. Make sure that the connector is fed through the lower left portion of the hole as shown in the picture above. When connecting the antenna to the back of the navigation unit, please push hard to verify a good connection.

## POTENTIAL PROBLEMS

### GPS Has a Red Line/Slash Though It:

1. Drive around to sync the satellites with your unit. This could take up to 24 hours.
2. Unplug, then plug your GPS antenna connector – push hard to verify a good connection. Do not severely bend the cable since you might break the internal wire.
3. Reposition the antenna for better signal reception – verify no metal object is above the antenna. Window tint can also affect satellite reception. You could temporarily place the antenna outside of the vehicle just to illuminate any obstructions.
4. Change your region: select “DEST”, then touch the map (right side of the screen). Now select your region.
5. Eject the Map Disc and reinstall it.
6. Install a VSS Kit (brown connector).

### The Tracking Seems to Lag or I Don't Get the Proper Amount of Voice Commands Along a Route:

1. Install a VSS kit.