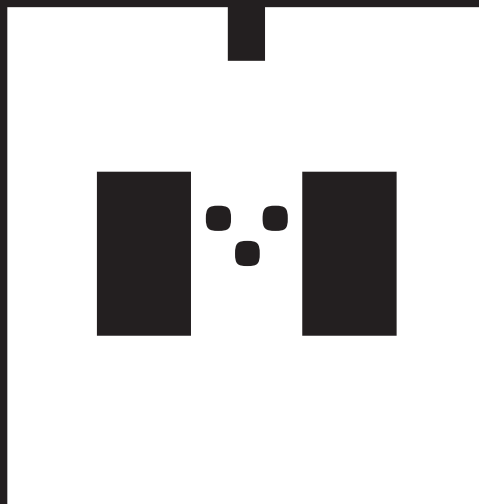
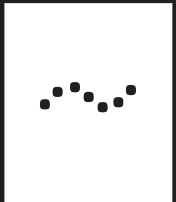
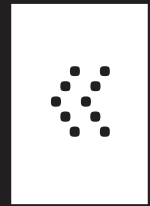
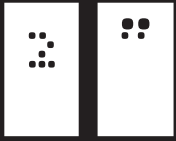
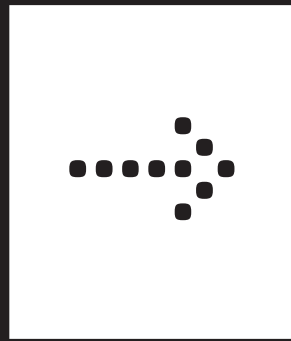


abcdefg
hijklm
**Nouvelle
Noire**
opqrstu
vwxyz.



Typeface
ABF Silhouette

Version
1.0

Character set
Basic

Weights
Regular

Available at
www.nouvellesnoire.ch

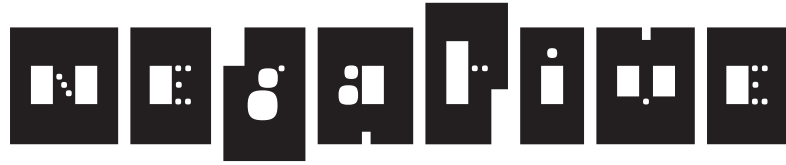
Published
2013

Designer
Philippe Apeloig

Development
Nouvelle Noire

ABF Silhouette

1 Weight



ABF Silhouette

1 Weight



ABF Silhouette
6 Pt

G

jemand musste
josef verurteilt
haben, denn ohne
dass er etwas böses
getan hätte, wurde
er eines morgens

verhaftet. wie ein
hund! sagte er es
war, als sollte die
scham ihn überleben.
als gregor sprach
eines morgens aus

unruhigen fräulein
erwachter fand er
sich in seinem bett zu
einem ungeheuren
ungeziefer
verwandelt, und es

ABF Silhouette
8 Pt

jemand musste josef l.
verurteilt haben, denn
ohne dass er etwas böses
getan hätte, wurde er
eines morgens verhaftet.
wie ein hund! sagte
er, es war, als sollte die
scham ihn überleben.
als gregor sprach eines

morgens aus unruhigen
fräulein erwachter, fand
er sich in seinem bett
zu einem ungeheuren
ungeziefer verwandelt,
und es war ihnen wie
eine bestätigung ihrer
neuen fräulein und
guten absichten, als

ABF Silhouette
12 Pt

jemand musste josef l. verurteilt
haben, denn ohne dass er etwas
böses getan hätte, wurde er eines
morgens verhaftet. wie ein hund!
sagte er, es war, als sollte die
scham ihn überleben. als gregor

ABF Silhouette
16 Pt

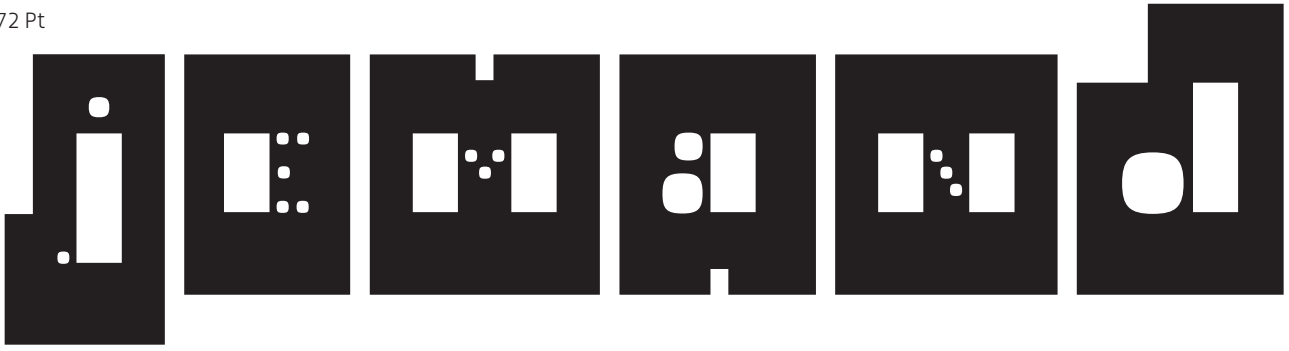
jemand musste josef l.
verurteilt haben, denn
ohne dass er etwas böses
getan hätte, wurde er ein
eines morgens verhaftet.
wie ein hund! sagte er,
es war, als sollte die
scham ihn überleben. als
gregor sprach eines mor-
gens aus unruhigen fräulein
erwachter, fand er

ABF Silhouette
24 Pt

illegible illegible illegible illegible
illegible illegible illegible illegible
illegible illegible illegible illegible
illegible illegible illegible illegible
illegible illegible illegible illegible
illegible illegible illegible illegible

ABF Silhouette
36 Pt

illegible illegible illegible illegible
illegible illegible illegible illegible
illegible illegible illegible illegible
illegible illegible illegible illegible
illegible illegible illegible illegible
illegible illegible illegible illegible



ABF Silhouette
6 Pt

F

EN SE REVEILLANT UN
MATIN APRES DES REVES
AGILES, GREGOR SANS
SE RETROUVA DANS SON
LIT, METAMORPHOSE
EN UN MONSTRUEUX

INSECTE, IL ETAIT SUR
LE DOS, UN DOS AUSSI
DUR QU'UNE CARAPACE,
ET, EN RELEVANT UN PEU
LA TETE, IL VIT, BOMBE,
BRUM, BLOIE

DES ARCADES PLUS
RIGIDES, SON ABDOMEN
SUR LE HAUT DUQUEL
LA COUCOUFURE,
PRETE A GLISSER POUR
A FAIT, NE POUVAIT

ABF Silhouette
8 Pt

EN SE REVEILLANT UN MATIN
APRES DES REVES AGILES,
GREGOR SANS SE RETROUVA
MAI, DANS SON LIT, META-
MORPHOSE EN UN MONSTREU-
X INSECTE, IL ETAIT SUR
LE DOS, UN DOS AUSSI DUR
QU'UNE CARAPACE, ET, EN

RELEVANT UN PEU LA TETE,
IL VIT, BOMBE, BRUM, BLOIE
SOMME PAR DES ARCADES
PLUS RIGIDES, SON ABDO-
MEN SUR LE HAUT DUQUEL
LA COUCOUFURE, PRETE A
GLISSER POUR A FAIT, NE
PEUVAIT PLUS QUIA PEINE.

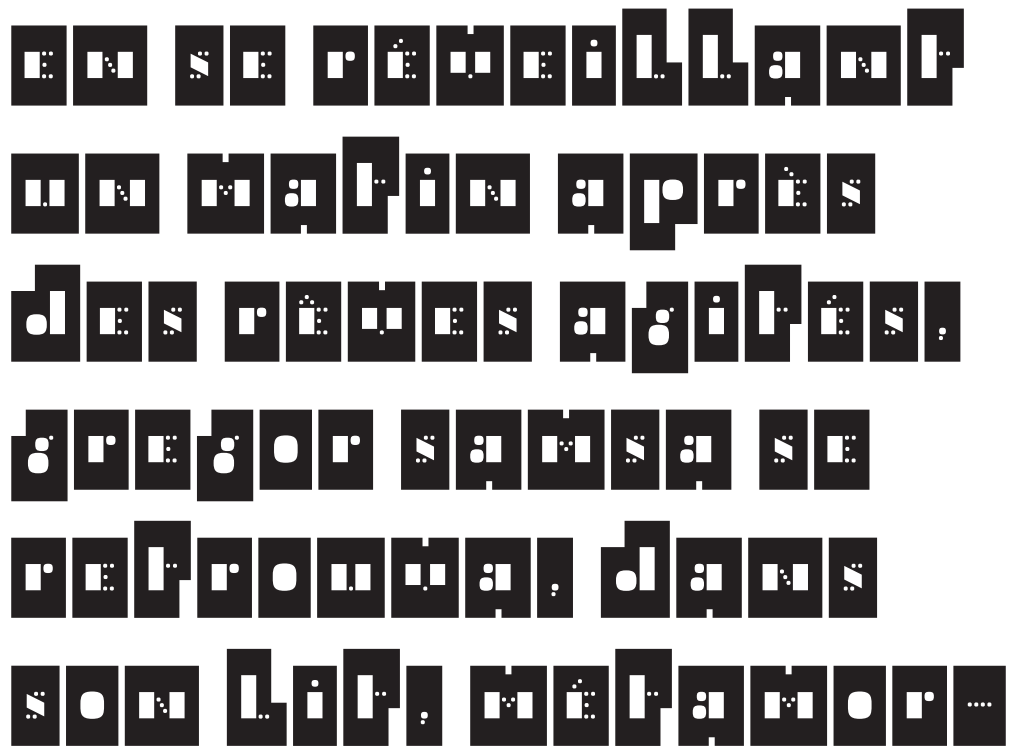
ABF Silhouette
12 Pt

EN SE REVEILLANT UN MATIN APRES DES
REVES AGILES, GREGOR SANS SE RETROU-
VA MAI, DANS SON LIT, METAMORPHOSE
EN UN MONSTRUEUX INSECTE, IL ETAIT
SUR LE DOS, UN DOS AUSSI DUR QU'UNE
CARAPACE, ET, EN RELEVANT UN PEU

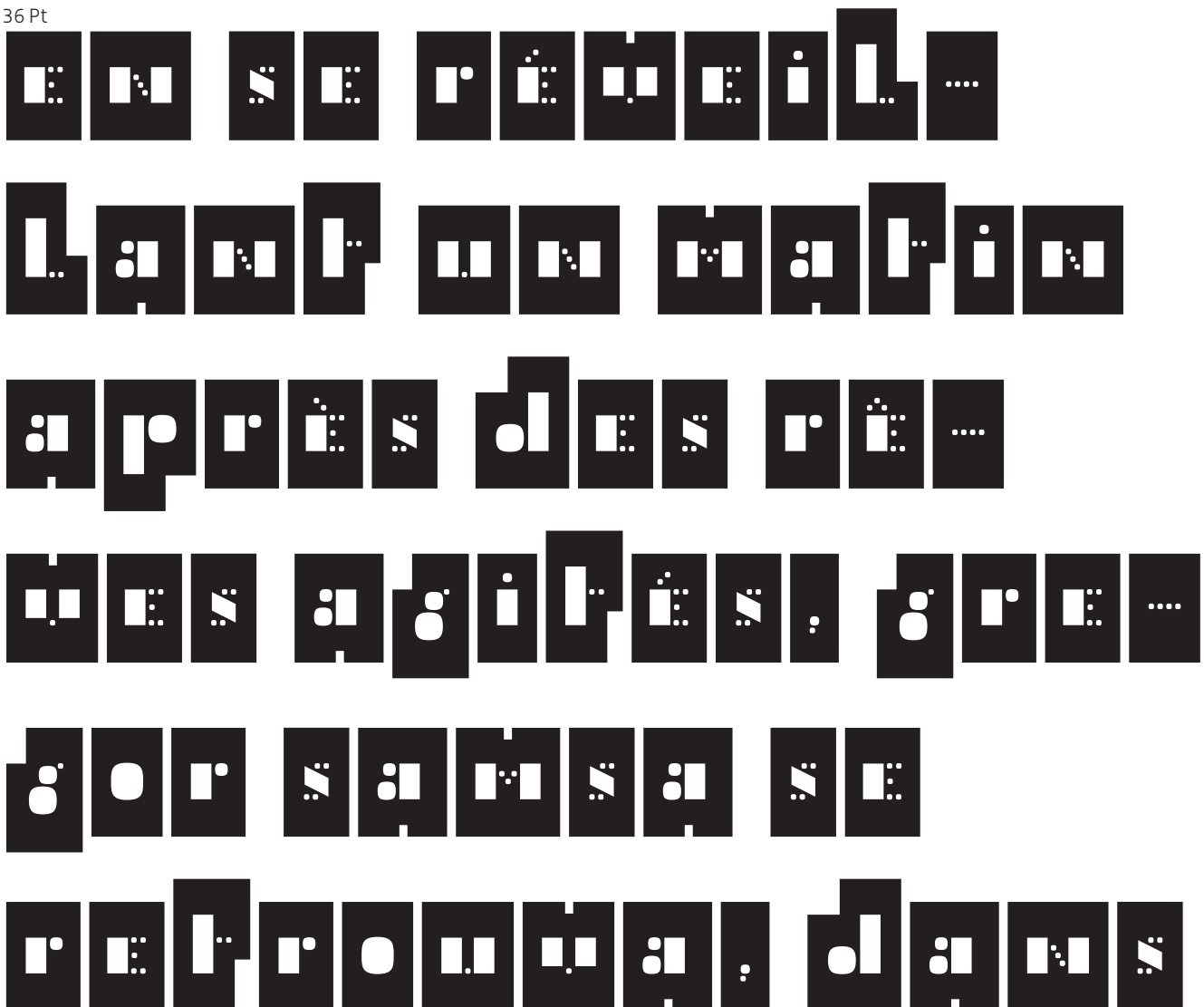
ABF Silhouette
16 Pt

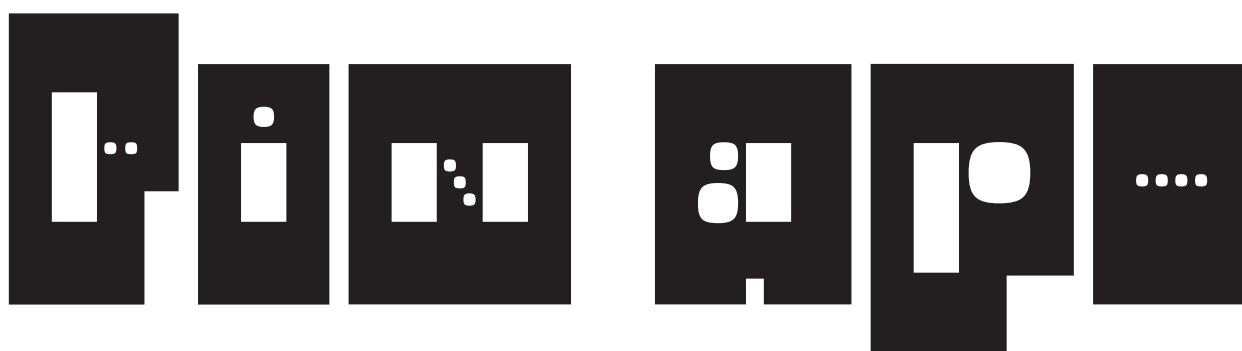
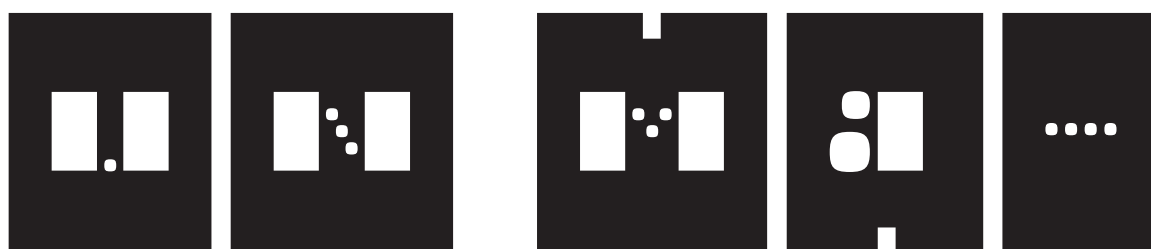
EN SE REVEILLANT UN MATIN
APRES DES REVES AGILES,
GREGOR SANS SE RETROUVA
DANS SON LIT, METAMORPHOSE
EN UN MONSTRUEUX INSECTE.
IL ETAIT SUR LE DOS, UN
DOS AUSSI DUR QU'UNE CARA-
PACE, ET, EN RELEVANT UN
PEU LA TETE, IL VIT, BOMBE,
BRUM, BLOIE, SOMME PAR DES
ARCADES PLUS RIGIDES, SON

ABF Silhouette
24 Pt



ABF Silhouette
36 Pt





ABF Silhouette
6 Pt

E

ONE MORNING, WHEN GREGOR SAMSÄ WOKÉ FROM TROUBLED DREAMS, HE FOUND HIMSELF TRANSFORMED IN HIS BED INTO A HORRIBLE

WORM. HE LAY ON HIS ARMOUR-LIKE BACK, AND IF HE LIFTED HIS HEAD A LITTLE HE COULD SEE HIS BROWN BELLY, SLIGHTLY

DOMED AND DIVIDED BY ARCHES INTO STIFF SEGMENTS. THE BEDDING WAS HARDLY ABLE TO COVER IT AND SEEMED READY TO SLIDE OFF

ABF Silhouette
8 Pt

ONE MORNING, WHEN GREGOR SAMSÄ WOKÉ FROM TROUBLED DREAMS, HE FOUND HIMSELF TRANSFORMED IN HIS BED INTO A HORRIBLE WORM. HE LAY ON HIS ARMOUR-LIKE BACK, AND IF HE LIFTED HIS

HEAD A LITTLE HE COULD SEE HIS BROWN BELLY, SLIGHTLY DOMED AND DIVIDED BY ARCHES INTO STIFF SEGMENTS. THE BEDDING WAS HARDLY ABLE TO COVER IT AND SEEMED READY TO SLIDE

ABF Silhouette
12 Pt

ONE MORNING, WHEN GREGOR SAMSÄ WOKÉ FROM TROUBLED DREAMS, HE FOUND HIMSELF TRANSFORMED IN HIS BED INTO A HORRIBLE WORM. HE LAY ON HIS ARMOUR-LIKE BACK, AND IF HE LIFTED HIS HEAD A LITTLE HE

ABF Silhouette
16 Pt

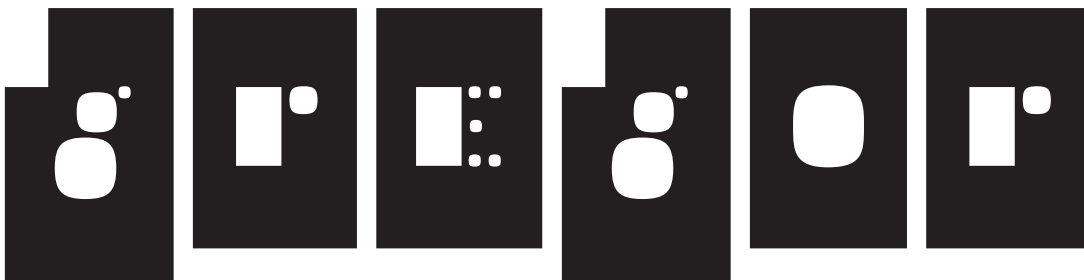
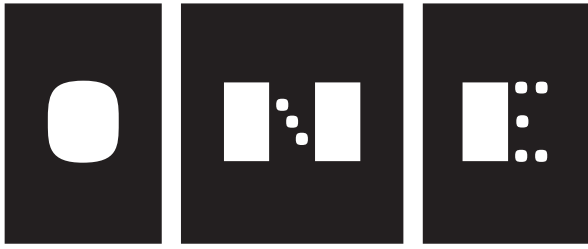
ONE MORNING, WHEN GREGOR SAMSÄ WOKÉ FROM TROUBLED DREAMS, HE FOUND HIMSELF TRANSFORMED IN HIS BED INTO A HORRIBLE WORM. HE LAY ON HIS ARMOUR-LIKE BACK, AND IF HE LIFTED HIS HEAD A LITTLE HE COULD SEE HIS BROWN BELLY, SLIGHTLY DOMED AND DIVIDED BY ARCHES INTO STIFF SEGMENTS. THE BEDDING WAS HARDLY ABLE TO COVER IT AND SEEMED READY TO SLIDE

ABF Silhouette
24 Pt

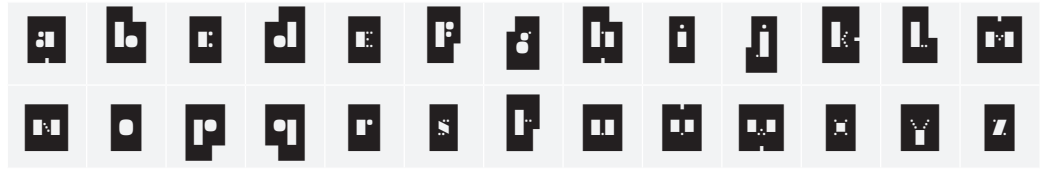
ONE MORNING, WHEN
I WAKED UP, I
FOUND MYSELF
DROPPING THE PHONE
IMMEDIATELY BECAUSE
I COULDN'T SEE IT

ABF Silhouette
36 Pt

ONE MORNING, WHEN
I WAKED UP, I
FOUND MYSELF
DROPPING THE PHONE
IMMEDIATELY BECAUSE
I COULDN'T SEE IT



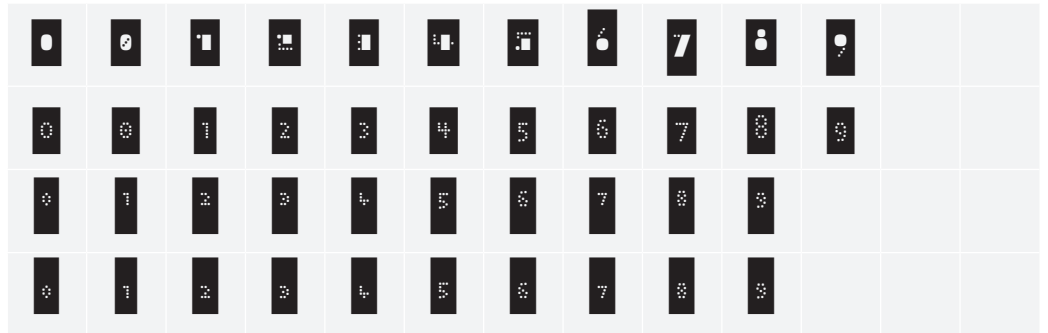
Uppercase / Lowercase



Accented Uppercase / Lowercase



Figures



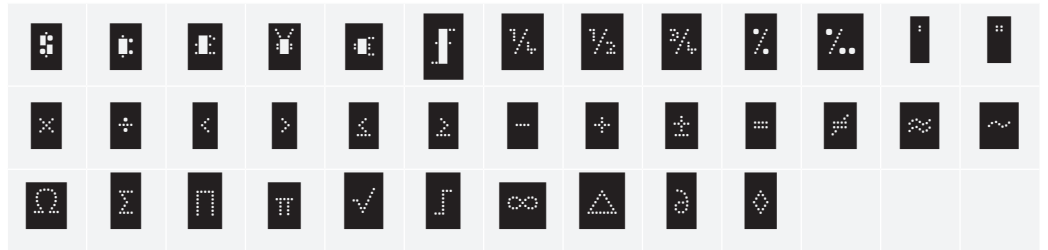
Superscript



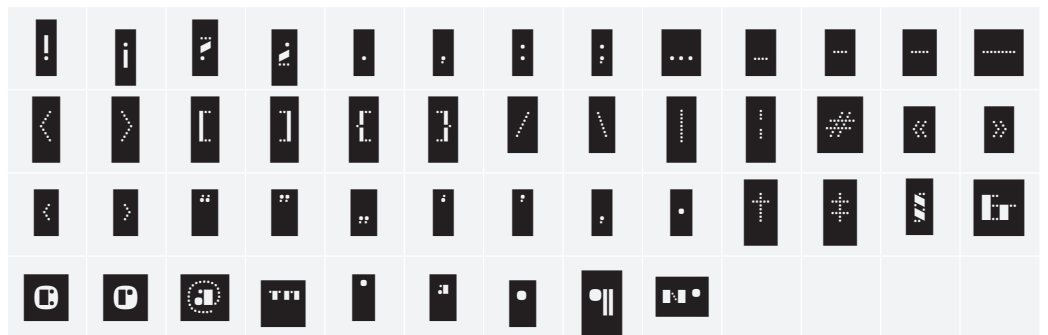
Subscript



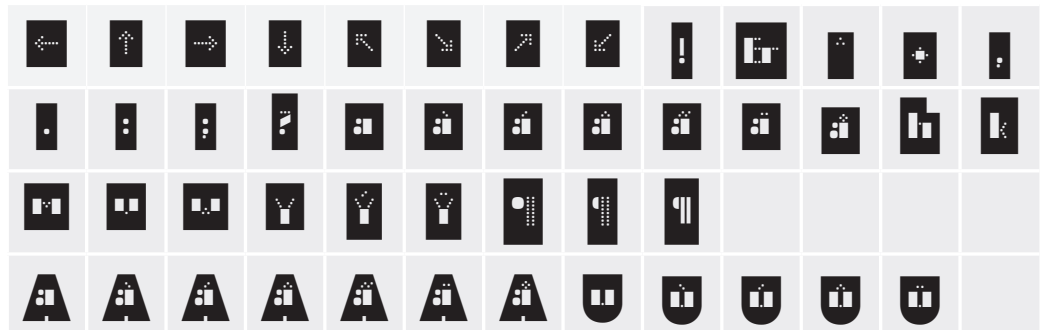
Currency, Fractions & Mathematical Signs



Punctuation & Ideographs



Arrows & Alternates



Open Type features

Discretional Ligatures



Stylistic Alternates 01



Stylistic Alternates 01



Fractions



Slashed Zero



Stylistic Alternates 03



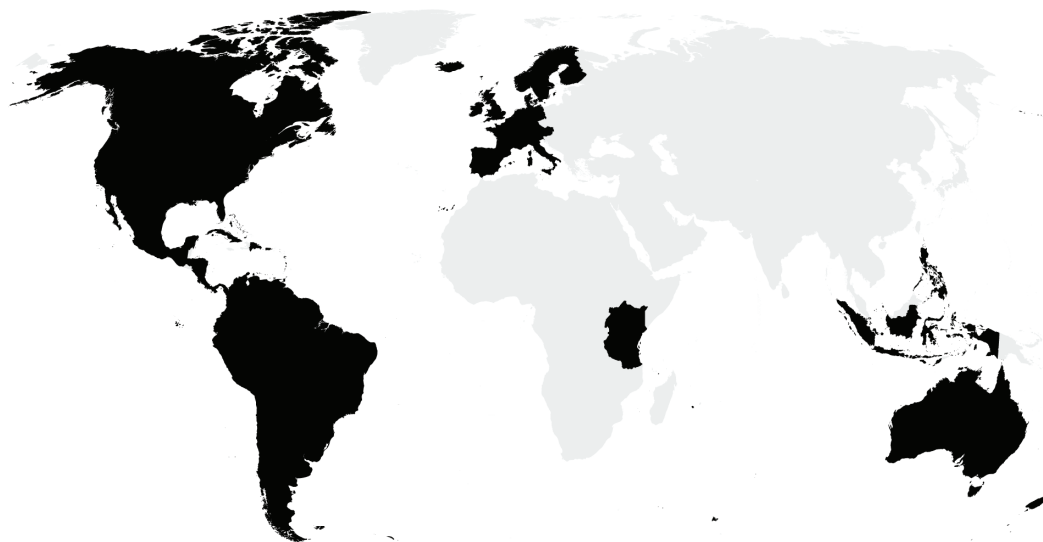
Subscript / Denominators



Superscript / Numerators



Stylistic Alternates 04



Language and codepage support

Supported Character Set Tables:

Unicode Basic Latin,
Latin-1 Supplement

Supported languages

Albanian
Danish
Dutch
English
Estonian
Faroese
Finnish
Flemish
French
German
Icelandic
Indonesian
Irish
Italian
Malay
Norwegian

Portuguese
Scottish Gaelic
Spanish
Swahili
Swedish
Swissgerman
Tagalog

Philippe Apeloig
Des bibliothèques à vivre.
Usages, espaces, architectures

55^e congrès, Paris,
Association des bibliothécaires de
France
175 × 118,5cm
2009



ABF Silhouette

In “ABF Silhouette,” the ABF Petit shapes become negative space inside solid black blocks. Barely chinked or angled to suggest larger, more abstracted versions of the letters within, the imposing blocks add a wow factor to the type.

The new letters, developed for the 2009 conference on the Space and Architecture of Libraries, provide protective housing for the ABF Petit letterforms.

“ABF Silhouette” combines with and defines the playful forms of “ABF Petit,” providing a striking counterpart to its sibling.

About the Designer

Philippe Apeloig

Philippe Apeloig was educated at the École Nationale Supérieure des Arts Appliqués and the École Nationale Supérieure des Arts Décoratifs (ENSAD) in Paris. After graduating and spending two transformative internships at Total Design in Amsterdam, where he realized the extent of his interest in typography and graphic design, he worked as a designer for Musée d'Orsay in Paris from 1985 to 1987. In 1988, Apeloig received a grant from the French Foreign Ministry and left Musée d'Orsay to work and study in Los Angeles with April Greiman. Later, from 1993 to 1994, he was honored with a research and residency grant at the Villa Medici in Rome by the French Academy of Art.

After returning to Paris from Los Angeles, Apeloig established his own studio. He returned to the École Nationale Supérieure des Arts Décoratifs to teach typography from 1992 to 1999, and then became a full-time Professor of Graphic Design at The Cooper Union School of Art in New York City until 2002. From 2000 to 2003, he was curator at the Herb Lubalin Center of Design and Typography at the Cooper Union School of Art, where he organized the "Graphic Cooper" lecture series and curated exhibitions.

Apeloig has produced many acclaimed poster designs, such as "Chicago" for the Musée d'Orsay (1987), and for cultural events and institutions. He designed the annual poster and publication for the New York Type Directors Club, and the corporate identity of the FIAF (French Institute / Alliance Française) in New York, where he is Art Director.

He won logo competitions for the Istituto Universitario di Architettura di Venezia (IUAV) in 2002, la direction des Musées de France in 2005, and the silversmith Puiforcat in 2012.

In 1997 Apeloig became a design consultant at Musée du Louvre, and was its Art Director until 2008. He developed the visual identity for the recent exhibition about Yves Saint Laurent at the Petit Palais and for "Type in Motion" at the Museum für Gestaltung in Zürich. In 2011 he was invited by London's Design Museum to contribute to a set of limited edition posters celebrating the work of Wim Crouwel.

Since 1997 Apeloig has been a member of the Alliance Graphique Internationale.

**Nouvelle Noire
Vallois + Studer**

Typedesign and
development

Konradstrasse 28
8005 Zurich
Switzerland

info@nouvellenoire.ch
www.nouvellemoire.ch

Thank you for ordering.

Ordering

Online ordering is the fastest and most convenient way to order and receive your fonts. After payment you will instantly receive your fonts to your mail account. All fonts are available through our website www.nouvellemoire.ch

Testing font

Upon request we will send demo versions of this font.

Further informations

For further informations concerning our fonts please contact us at: info@nouvellenoire.ch

Terms and condition

All information in this pdf is checked carefully nevertheless, we can not guarantee and do not take any responsibility that there are no wrong informations or failures.

Specimen design

Clovis Vallois + Anton Studer

© Nouvelle Noire 2013

All rights reserved