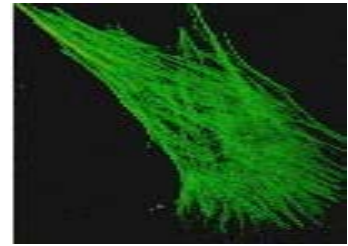


**Pan-reactive Mouse Anti-Actin (Clone C4)
Monoclonal Antibody**

Catalog Number: LMAB-C4
Quantity: 100 μ l
Specificity: Reacts with all known actins from yeast to man. No known spurious reactivities. Excellent positive control for Western blots.
Immunogen: Chicken gizzard actin
Isotype: IgG₁/kappa



Immunofluorescent Stain

The picture shows an immunofluorescent stain of human fibroblasts, detected with pan-reactive anti-actin (C4 1:500 dilution).

Applications and Suggested Dilutions*

Indirect Immunofluorescence – 1:500
Immunoblots – 1:500 for DAB/oxidase detection
Immunohistochemistry – 1:500
Blocking conditions: human specimens, 2% serum; mouse specimens, MOM kit (Vector Labs)

*Specific dilutions and blocking conditions should be determined by the investigator.

QC Testing

Immunofluorescence staining.

Supplied As

Ascites fluid containing 0.01% sodium azide to preserve.

Storage

Store at -70°C recommended, however the antibody is stable for months at -20°C and for weeks at 4°C. Multiple freeze/thaw cycles not recommended.

Reference

Lessard, JL. *Cell Motility and Cytoskeleton* (1998) 10:349-362.

For research purposes only. Not approved for diagnostic purposes or use in humans.