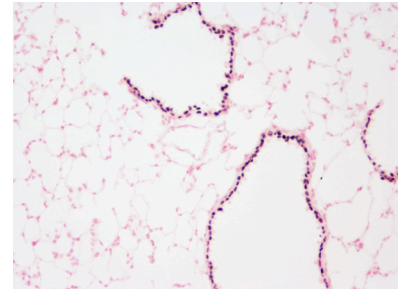


**Rabbit Anti-SOX2  
Polyclonal Antibody**

Catalog Number: WRAB-SOX2  
Quantity: 100 µl  
Specificity: Human, mouse, other species not tested  
Immunogen: Mouse SOX2 peptide (KLH conjugated)  
Isotype: NA



Immunohistochemical Stain.

*This picture shows adult mouse lung tissue embedded in paraffin and stained with anti-SOX2 rabbit serum (1:2000 dilution). SOX2 was visualized by DAB (black color) and counterstained with Nuclear Fast Red (pink color). Magnification 20x.*

**Applications and Suggested Dilutions\***

Immunohistochemistry – 1:2000  
Western Blot of tissue – 1:8000

\*Specific dilutions and blocking conditions should be determined by the investigator.

**QC Testing**

Immunohistochemical staining.

**Supplied As**

Rabbit serum containing 0.01% sodium azide to preserve.

**Storage**

Aliquot and store at -20°C. Multiple freeze/thaw cycles not recommended.

**Reference**

Unpublished