

little
windows®

brilliant photo jewelry



Cube Bracelet

Little Windows supplies:

1. Resin, Hardener, Mixing Cup, Wand
2. Special Photo Paper
3. Small Squares Mold (or any small mold shape)
4. LW Small Squares Cropping Software (or other photo editing software + LW Cropping Template)
5. Sterling Silver Accent Pins
6. Little Windows Mini Drill (or Creative Drill or other drill from home)

From home/a craft store:

- digital photo/s*
- computer & printer
- scissors
- pen or Sharpie marker
- small pliers
- 12-14" of leather cord in your choice of color
- findings for clasp - here are 2 options:



sterling crimp
hook clasp



sterling envelopes,
jump rings & toggle



* One batch of Little Windows Resin is enough to make 8 Small Square photo cubes, so have more pictures, beads or other embedables ready so you don't waste resin.

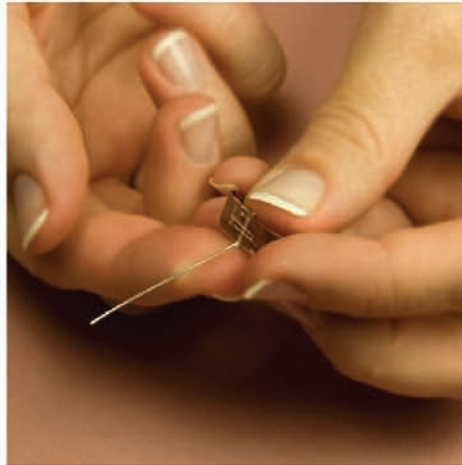
Use Little Windows Small Squares Photo Cropping Software, which is a web app., or other editing program to resize your images, then print & crop your photos.

For more details on this step, refer to the instructions for the Casting Technique at <http://www.little-windows.com>.

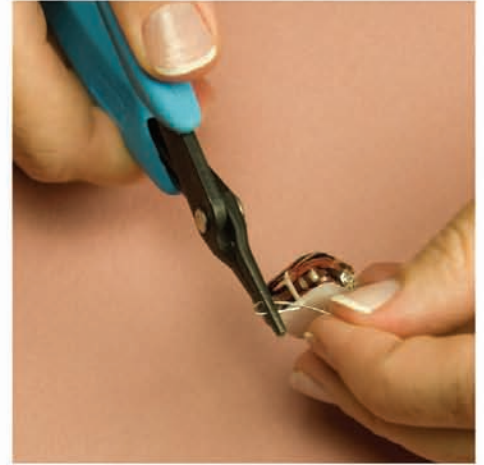
Cube Bracelet



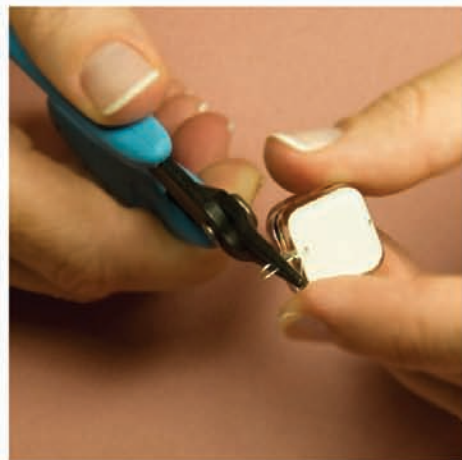
Use Little Windows drill or a Dremel tool to make 2 small holes in your cube, at least 1/8" in from the edges.



Insert an accent pin from the front, then bend the wire up 90 degrees.



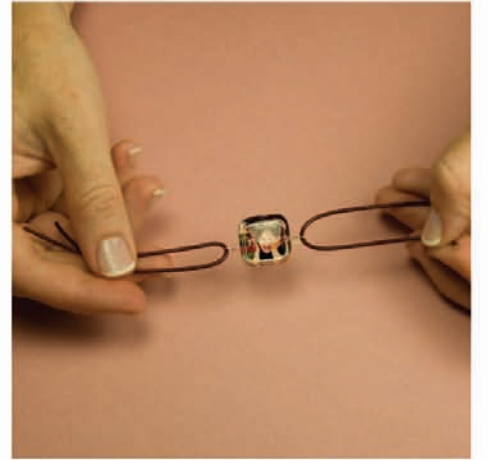
Use your pliers to make a loop in the wire, large enough for the leather cord to fit through easily.



Wrap the wire around the base of the pin 2 times, finishing with it pointing toward the front of the cube. Then snip the excess wire and tuck in the end so it won't poke you.

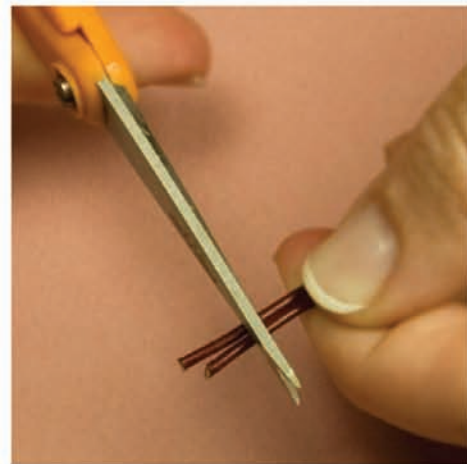


Repeat this process in the other side of your cube.

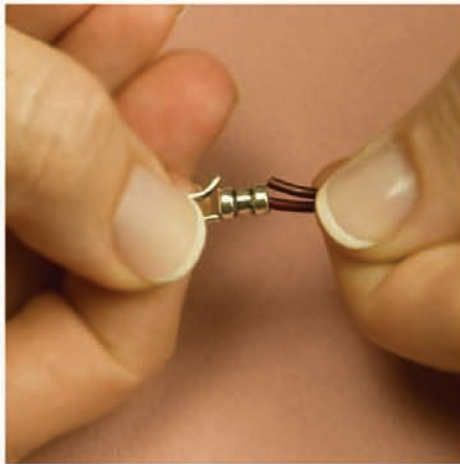


Cut the leather cord in 2 pieces. Feed it through the loops and wrap it around your wrist to get a comfortable measurement.

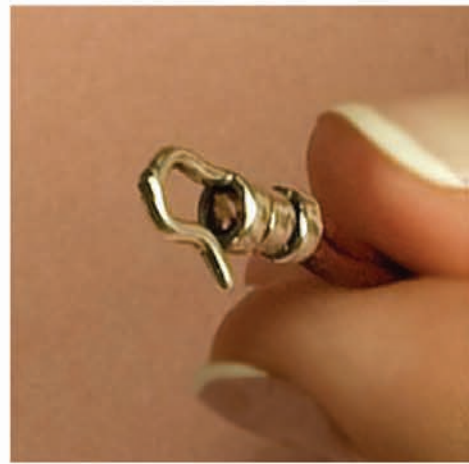
Cube Bracelet



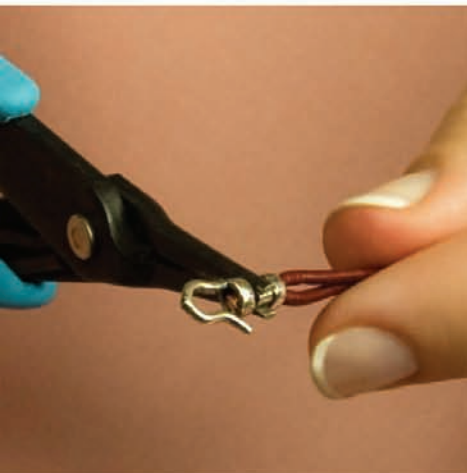
Snip the ends of the leather on each side so they are even.



Be sure your crimp clasp has a large enough barrel for both leather ends to fit through.



Feed both ends in and up to the top of the barrel. Repeat with the loop end on the other side.



Use your pliers to crimp down the center of the clasp barrel, to hold the leather in place. For a more secure bond, add a drop of SuperGlue before sliding the leather into the barrels.



And you're done!



You can do the same project using the larger mold shapes too.