



IMPORTANT ADVICE: EURO CYLINDER DOOR LOCKS



BACKGROUND

In as little as 13 seconds an intruder can get past a standard euro cylinder door lock using simple DIY tools. Lock Snapping break-ins are increasing and is one of the most common methods of forced entry into homes.

Most UPVC doors are secured with a replaceable barrel known as a Euro Profile cylinder as shown.

Over the past few years there has been a rise in forced entry break-ins using a method known as lock snapping.

New standards have now been developed to test a euro cylinder's resistance against snapping attacks.

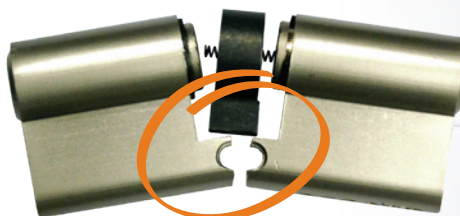


A ABS high security snap secure lock with a 3 star British Kitemark and Sold Secure Diamond standard will ensure that a door is secured if an intruder attempts to snap the lock.

Please note only the 3 star Kitemark and the Diamond grade test for snapping. A one star graded Kitemark lock has not passed snapping tests.

The common euro cylinder lock on most homes has a major weakness located around the screw fixing position which means when pressure is applied the lock simply snaps.

Once this happens the cam that operates the door bolt falls away allowing access - within seconds!



It doesn't matter how many hooks and bolts your door has. The euro cylinder is the weakest link.

Burglars are aware of this weakness and lock snapping break-ins are rising as a result.

The Police are urging homeowners to review their locks to upgrade to new TS007 British Kitemark 3 star and Sold Secure Diamond rated locks.

This problem has recently made national news on ITV's the This Morning Show - Oct 31st 2013



THE SOLUTION

The ABS high security cylinder lock has unique patented Snap Secure technology that effectively blocks out intruders after a snapping attack. With the highest accreditations available ABS is proven to beat the burglar.

THE ABS SNAP SECURE LOCK

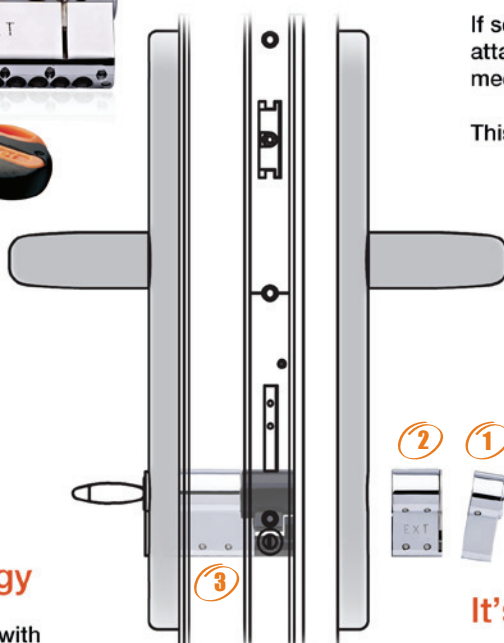


1). Break-Off Front

Sacrificial front section which will break off if attacked. The lock will still be operable with the key on the remaining part of the cylinder.

2). Snap Secure Technology

ABS takes lock security to another level with its patented system that locks the cam into position if the second portion of the ABS lock has been snapped.



3). A Total Barrier!

If sections one and two are removed in an attack the patented locking cam and blocking mechanism are retained within the lock casing.

This will provide a total barrier against entry.



It's still key operable!

If the front section only is removed and after attack the door can be opened from the inside.

THE NEW KITEMARK FOR CYLINDER LOCKS

British Kitemark TS007:2012

BSI TS007:2012 is the revised British Kitemark for euro cylinders and security hardware.

This new Kitemark uses criteria of the past Kitemark tests, i.e. BS EN 1303:2005 and BS 3621:2007 and PAS24:2007* but now has additional tests which use a common method of attack known as "lock snapping".

Euro cylinders and security hardware will now be classified under the TS007 British Kitemark with the use of a star rating system.

Euro cylinders can be rated as **one star or three stars** and security hardware will be rated as **two stars**.

Cylinders are awarded a **three star rating** when they have passed all criteria of the TS007 British Standard Kitemark including new lock snapping tests.

* PAS 24:2007+A2:2011 A.11

A **one star** rating is given to a **cylinder lock** that has met criteria of the British Kitemark but has not passed snapping tests. The locks would **require additional 2 star rated security hardware** to reach a TS007 3 star Kitemark.

The ABS snap secure lock does not require additional security handles or guards which are often difficult to install in a retro-fit application.

The **ABS** snap secure lock is a **3 star Kitemark** accredited lock that is a retro-fit solution that replaces a standard lock with no other costly hardware or door modifications.

Most importantly the **ABS** lock is also accredited with the **Sold Secure Diamond** standard. The Master Locksmith Associations highest standard for cylinder locks.

The SS312 Sold Secure Diamond standard rates the robustness of the cylinder alone.

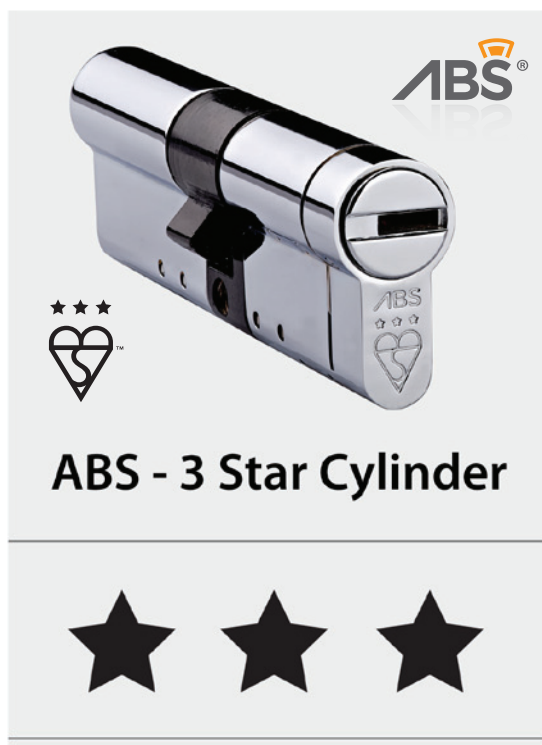
ABS is currently the only retro-fit cylinder that has passed the Sold Secure Diamond standard.



CHOICES

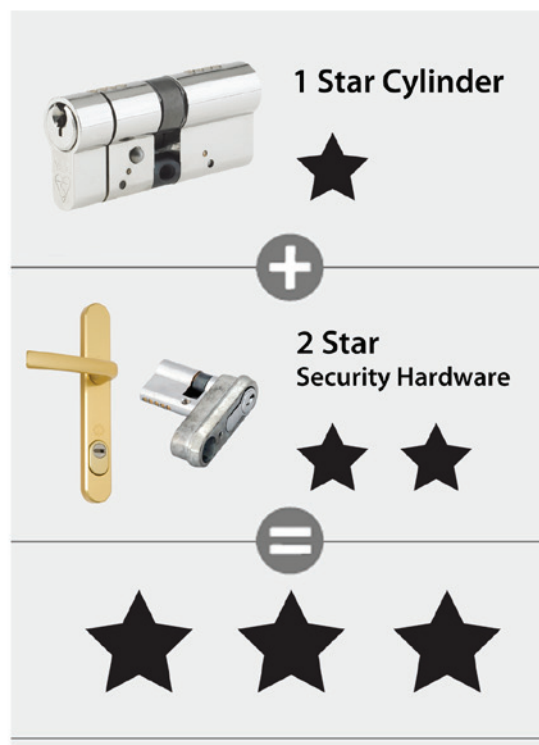
An ABS three star British Kitemark rated lock is a simple retro-fit upgrade. If a lower grade one star Kitemark lock is used an additional 2 star rated security handle or cylinder guard must also be installed to comply with the Kitemark.

An ABS TS007 Kitemarked
3 - Star cylinder
(No armoured handle or guard required)



Simple retro-fit ABS 3 star and Sold Secure Diamond rated. A direct replacement - a snap secure solution.

A TS007 1 - Star Kitemarked cylinder
+ TS007 2 - Star armoured handle or
cylinder guard



Difficult to govern. 2 star rated security hardware to be used - not easy to retrofit as door has to be modified.



Security locked in.
Intruders locked out.

FAQs

My door bolt is the latest in security with lots of locking points such as hooks and a large deadbolt. Will it be secure?

It doesn't matter how many hooks and deadbolts you have. It's all down to the Snap Security of the Euro Cylinder. Once the cylinder has been snapped the other secondary security devices are useless as the door can be opened within seconds.

My Euro Cylinder has a British Kitemark will it be snap secure?

The British Kitemark Standard BS EN 1303: 2005 does not cover Snap Resistance. Only the SS312 Sold Secure Diamond and BSI TS007:2012 3 star accreditations mean that the euro cylinder is snap secure without the need for additional security handles or cylinder guards.

My Euro Cylinder has sacrificial sections to stop snapping attacks.

Snap off sections will slow down the attack, but only by a couple of seconds. Cylinders with snap lines could be attacked again beyond the shear line - giving access. Only the patented snap secure locking cam of the ABS lock can provide a total barrier to the locking mechanism.

Only 3 star rated and Sold Secure Diamond locks have been tested to stop a snapping attack.

My Euro Cylinder has a "one star rated" British Kitemark will it be snap secure?

No, this lock has not passed the snapping tests which is why it is not three star rated. This lock would require additional security handles or cylinder guards with a 2 star rating. These additional pieces of hardware might not be easy to retro-fit, unlike the ABS lock which is a direct swap.

One star locks are not snap secure.

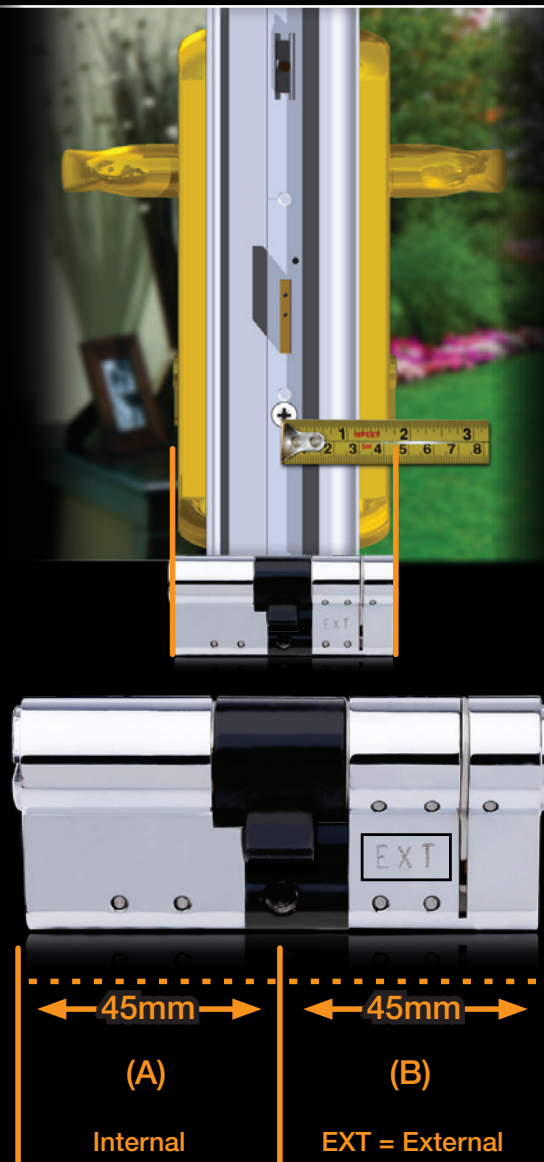
My Euro Cylinder is Insurance Approved will it be Snap Secure?

Check that the lock complies with the new TS007 British Kitemark and that you have a 3 star rated lock or a 1 star lock and 2 star security handle or guard.

If your lock only complies to BS EN 1303:2005 or BS 3621 it has not been tested to the new tests included in the TS007:2012 British Kitemark.

The new TS007 standard was introduced in 2012 as a result most insurance companies could be in the process of updating policy documentation.

ABS Cylinder Measuring Guide



Two measurements are required to determine the size of the cylinder.

Measure from the centre of the fixing screw on the door - (A) to the internal edge of the cylinder/door handle plate and then to (B) the external edge.

In this case a 45/45 would be required.

