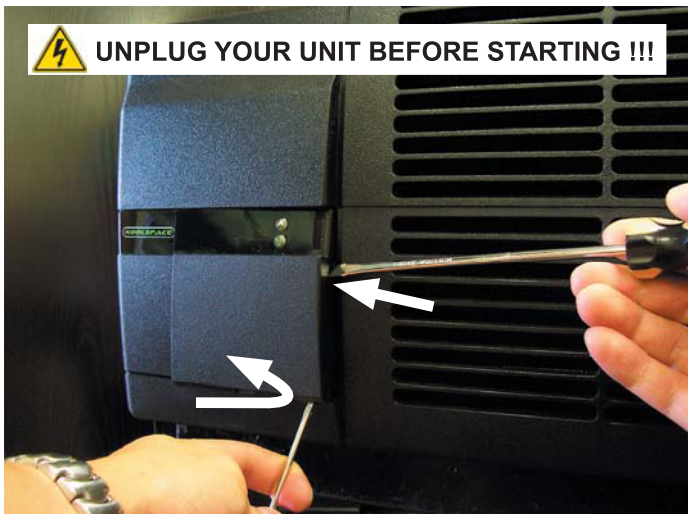




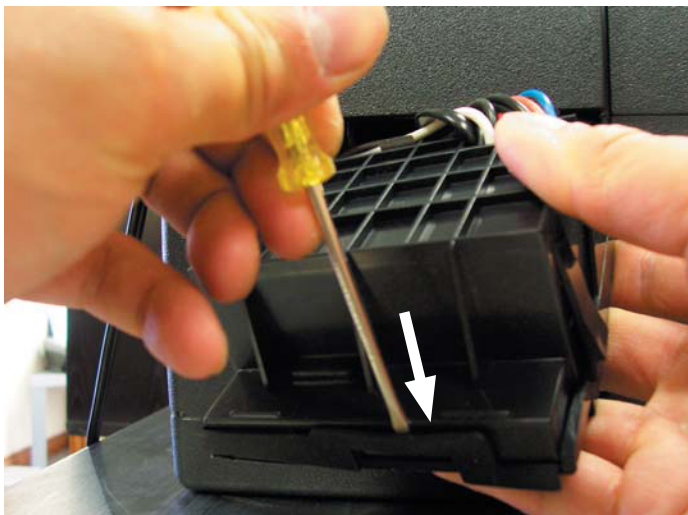
**UNPLUG YOUR UNIT BEFORE STARTING !!!**



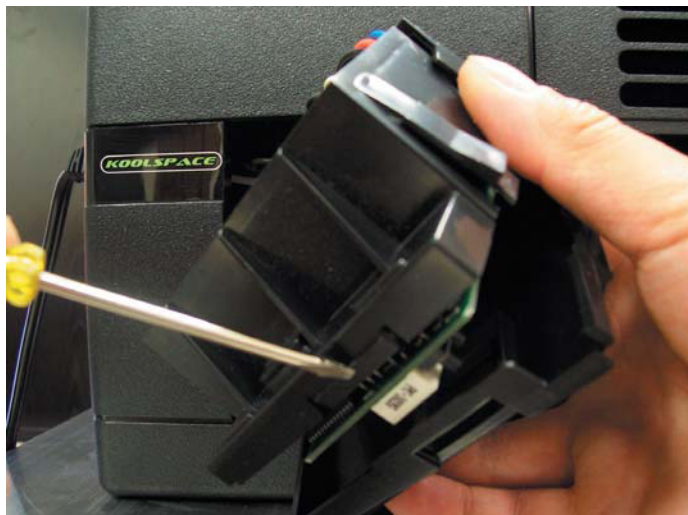
① Use a flat head screw driver to push in tab on right side. Slide into bottom gap and lift outwards with 2nd flat head.



② Angle bottom out and pull out controller.



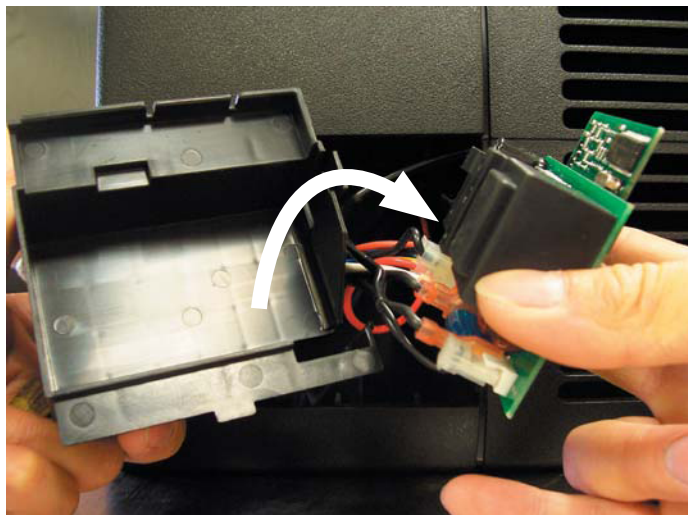
③ Slide flat head between snap fit.



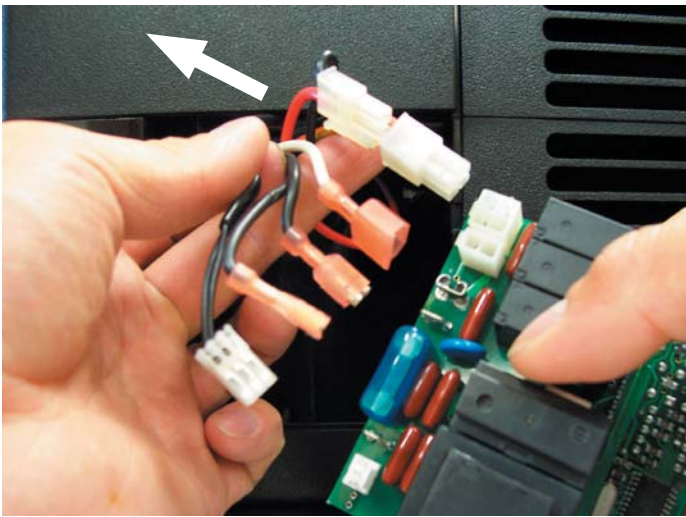
④ Pry snap fit tab open.



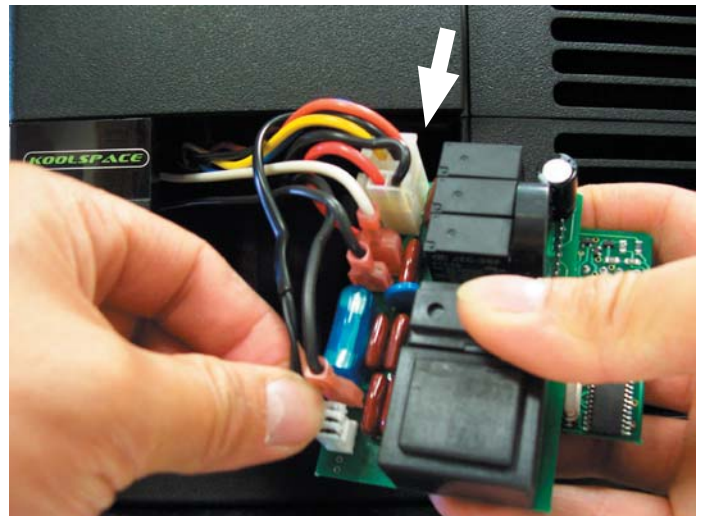
⑤ Remove front cover.



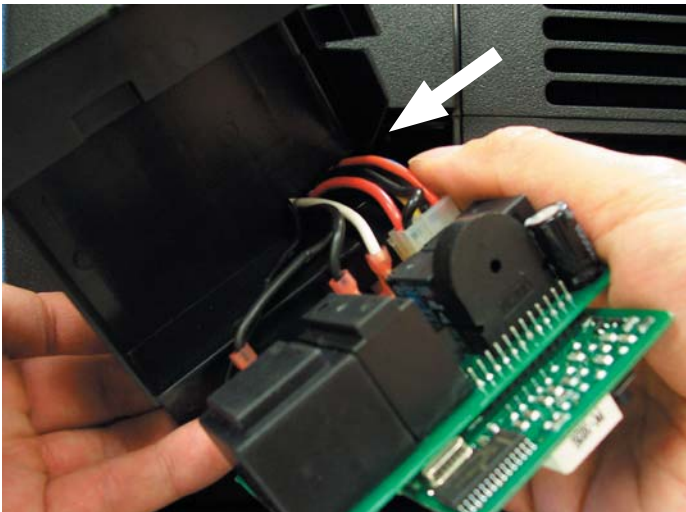
⑥ Remove controller from back cover.



⑦ Unplug all wires.



⑧ Replug all wires to new controller.



⑨ Slide wires into slot of back cover and place controller into back cover.



⑩ Slide in small bottom tab of back cover into front cover bottom slot. Squeeze both covers together to close.



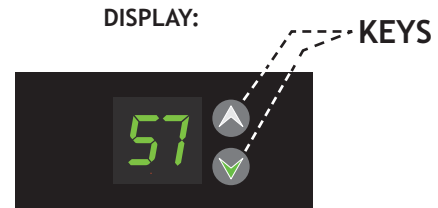
⑪ Slide in controller box by angling top in first.



⑫ Push bottom right corner to snap in place.

# CONTROLS : PLUG IT IN (wait one minute) and ENJOY!

- FEATURES:**
- Default SET temperature 57° F/14° C (ideal for wine storage).
  - Calibration option of the temperature sensor.
  - Display of actual temperature by request.
  - SET temperature range 52°F-64°F.
  - Digital temperature sensor.
  - Dual display F°/C°.
  - Settings are stored in memory for power failures.
  - Pre programed software will reach the quietest most efficient operation.



- OPERATION:**
- The display will show the detected temperature until the temperature will fall within 3° of the SET POINT.
  - If the temperature is above the default 57° F + 1° or other preset value, after a **delay of 1 minute** the fan will start, followed by the compressor within the next minute.
  - The unit will cycle ON/OFF based on the temperature reading. Fan speeds are automatically set by the controller to achieve optimum performance.
  - Minimum ON and OFF cycle times are imposed by software, to prevent "short cycling".

CONTROLLER OPERATION	ACTION	DISPLAY EXAMPLE	
		BEFORE	AFTER
TO DISPLAY:	Actual temperature: PRESS ▲	57°	56°
	SET temperature: PRESS ▼	70°	57°
TO MODIFY SET TEMPERATURE (range is 52-64°F):	PRESS and RELEASE ▼	57°	57°
	To increase: PRESS ▲ once per degree	57°	58°
	To decrease: PRESS ▼ once per degree	57°	56°
	The new value will be memorized and the controller will reset automatically.		
TO CHAANGE FROM °F to °C: or °C to °F	PRESS and HOLD ▼ until buzzer sounds in 5 seconds	57°	14°
	The new value will be memorized and the controller will reset automatically.		
TO CALIBRATE:	PRESS and HOLD ▼ while holding PRESS ▲ and RELEASE	57°	57°
	Wait 5 seconds	57°	F0
	USE ▲ or	F0	F1
	▼ for each degree of offset	F0	-1
<b>NOTE:</b> A negative offset ▼ will result in a warmer cabinet and a positive offset ▲ will result in a cooler cabinet. The new value will be memorized and the controller will reset automatically.			

**SAFETY FEATURES:**

- ALARM:**
- If the temperature exceeds 72° F the unit will shut down, a sound warning will start and the display will blink **AL** alternating with the temperature reading.
  - This function is disabled in the first 4 hours "Cool Down" period or after any reset for another 4 hours.
  - The unit will restart and continue the cooling and cycling if the temperature falls below 72° F.

- TO RESET:**
- Unplug and re plug the unit.