

# XIT 404's SOLA REMORA TRIGGER INSTALLATION INSTRUCTIONS

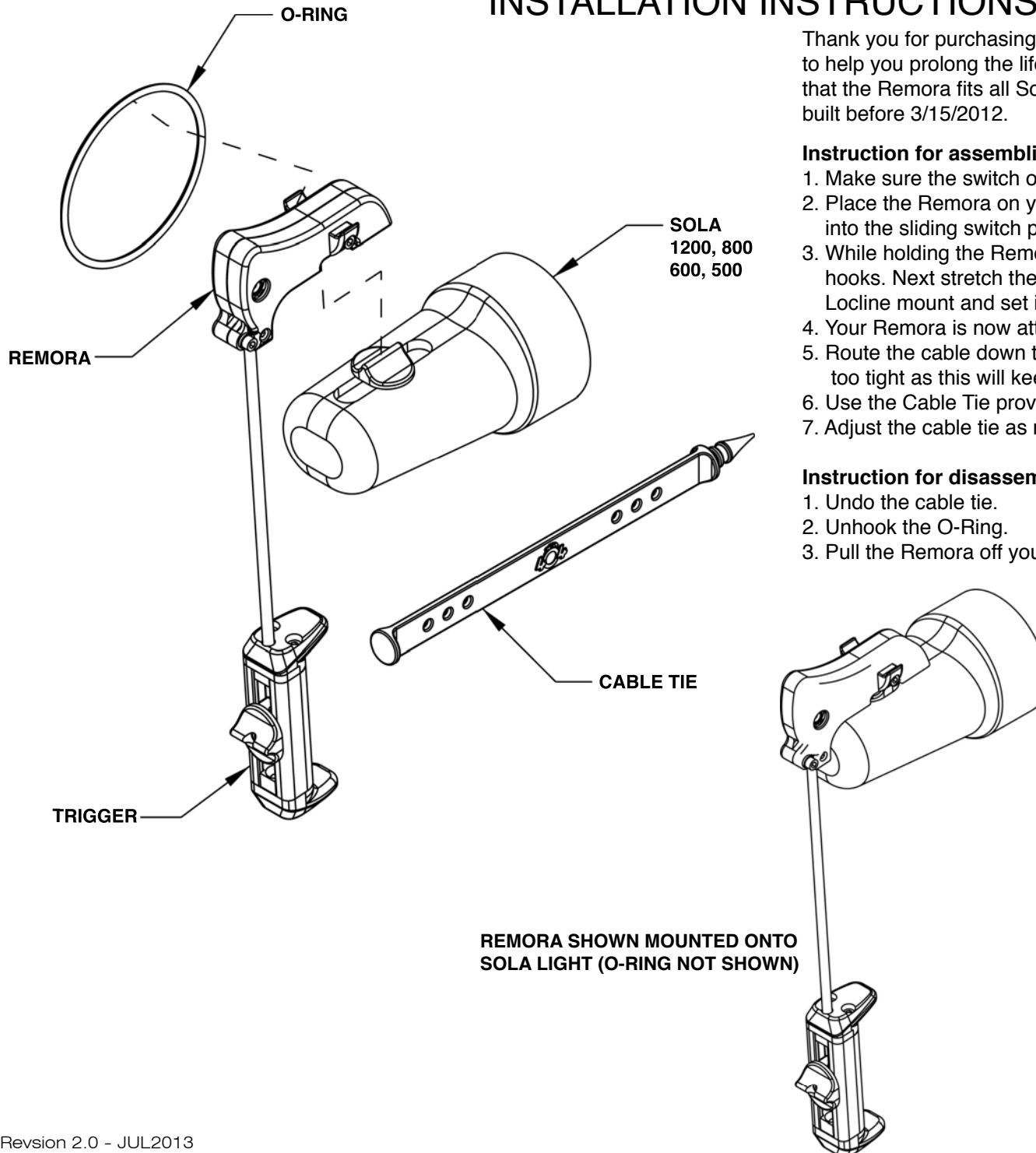
Thank you for purchasing Xit 404's Sola Remora Trigger. Below are instructions to help you prolong the life of your product. Warranty is on the back. Please note that the Remora fits all Sola 500, 600, and 800 models and the Sola 1200 models built before 3/15/2012.

## Instruction for assembling a Sola Remora Trigger

1. Make sure the switch on the light is in the "locked" position.
2. Place the Remora on your Sola light oriented as shown. The Remora will fit into the sliding switch pocket on the light. You do not need to force it.
3. While holding the Remora in place take the O-Ring and set it onto one of the hooks. Next stretch the O-Ring around the light so that it goes in front of the Locline mount and set it onto the opposite side hook.
4. Your Remora is now attached to the light.
5. Route the cable down the arm the light is attached to. Do not wind the cable too tight as this will keep the trigger from working.
6. Use the Cable Tie provided to attach the cable to the arm.
7. Adjust the cable tie as needed to keep the trigger in your desired position.

## Instruction for disassembling a Sola Remora Trigger

1. Undo the cable tie.
2. Unhook the O-Ring.
3. Pull the Remora off your light.



# Xit 404'S SOLA REMOTE TRIGGER MAINTENANCE AND WARRANTY

## **Maintenance Instructions for Xit 404's Sola Remote Trigger:**

Proper maintenance of the Sola Remote Trigger and its parts will ensure a long life and is required for warranty coverage. This includes rinsing in fresh water after each dive, removing any salt build-up when found. Use a salt remover as needed to clean any deposits.

## **Warranty Policy for all Sola Remote Triggers:**

Sola Remote Triggers are warranted against manufacturer defects for 1 year starting from date of purchase. The warranty is non-transferrable and does not cover failures from abuse or misuse. Warranty does not apply to O-rings and mounting hardware kits. If Xit 404 determines that the equipment was damaged due to abuse or misuse the warranty is no longer valid. Warranty is voided if the product is not properly maintained in accordance with Xit 404 instructions. Proof of purchase from an authorized dealer is required for all warranty claims.

## **A special note about corrosion**

Aluminum, Stainless Steel, Brass, and other metals interact with each other to a greater or lesser degree in the presence of water. Liberal use of a corrosion inhibitor between these metals will help minimize corrosion. Xit 404 also coats its metal parts to help minimize corrosion - this just slows it down but does not stop it. Direct contact between these metals will cause corrosion and Xit 404 does not warrant against this effect. This can happen due to wear, chipped coatings, scratches, or dents in the coatings caused from normal use and/or lack of a corrosion inhibitor. Through proper care and maintenance you can slow corrosion significantly and prolong your underwater gear.

If you wish to purchase replacement kits or have any questions about your Sola Remote Trigger, please contact your local Xit 404 Dealer.

## **Related Products:**

### **Product Description**

Sola Remora Trigger O-Ring Replacement Kit  
Sola Pilot Trigger 20" Kit For Sola 2000s/4000s (COMING SOON)  
Sola Pilot Trigger O-Ring Replacement Kit (COMING SOON)  
Sola Pilot Trigger O-Ring Replacement Kit Sola 4000s (COMING SOON)

### **Product Codes**

RR120200  
RT210120  
RR220200  
RR220300



[www.xit404.com](http://www.xit404.com)