

myEharge™

REGISTER

Your Product At:

www.mycharge.com

Your valuable input will
help us create even better
products in the future.

myCharge name and logo are registered trademarks of RFA Brands, LLC.
©2012-2013 RFA Brands, LLC. All Rights Reserved. Patent Pending.

Made in China. IB-RFAM-0247

OWNER'S MANUAL

**For latest instructions please go to
www.mycharge.com/instructions**

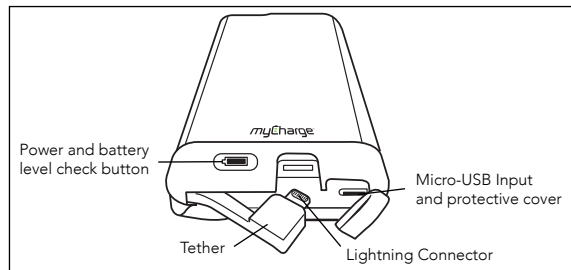
Thank you for
choosing myCharge
Freedom 2000™

Thanks for choosing myCharge.

Visit mycharge.com/videos/Freedom to view the product demo video!

In The Box

- myCharge Freedom 2000™
- Micro-USB charging cable
- Owner's manual

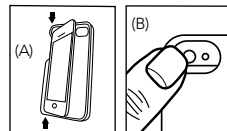


Section I: Charging Your Freedom Case

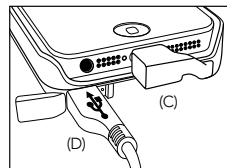
1. Charge your Freedom 2000 with the included charging cable and your own USB power supply – wall adapter, car adapter or USB port on your computer.
2. As Freedom 2000 charges, the battery icon will flash the color of the battery level. When the unit is fully charged, the battery icon will turn solid green. Press the level check button to see how much power is available.

Section II: Charging Your Case & iPhone Together

1. Insert phone by press fitting into the case, left side first. (A)
To remove phone: push out through the camera opening. (B)



2. Pull out the charging tether and insert into your iPhone's charging port. (C)
3. Plug charging cable into micro-USB inlet and opposite end into power source. (D)
4. **Press the battery icon button to begin charging.** To confirm that your iPhone is charging - check the charging icon on your iPhone.



5. When your iPhone 5 is done charging, unplug the charging tether and tuck into the recess on the back of the Freedom 2000. Your Freedom 2000 will automatically power off after your iPhone 5 is unplugged.

Follow these steps at night and wake up to both devices fully charged.

Section III: Charging Times

Times to charge your power case vary based on what it's plugged into. You can expect a full charge from a USB adapter in about three hours or from a standard notebook USB port in about five hours.

As your Freedom 2000 charges, the battery icon will flash according to the energy level:

Solid Green: 100%

Flashing Green: 71-99%

Flashing Yellow: 41-70%

Flashing Red: 0-40%

Note: It is normal for your Freedom 2000 to be warm to the touch while in use.

Section IV: Charging your iPhone 5

Press fit your iPhone 5 into the case. Pull out the charging tether at the bottom of the Freedom 2000 power case and insert it into the charging port on your iPhone 5.

Press the battery icon button to begin charging.

Section V: Checking Battery Level

To check how much energy is available, press the battery level check button. The battery icon will illuminate accordingly:

Green: 71-100%

Yellow: 41-70%

Red: 11-40%

Flashing Red: 0-10%

After 5 seconds, the LED will turn off.

Section VI: Maintenance

To keep your myCharge Freedom 2000 operating at its full potential, please do the following:

1. Re-charge every three months when not in use.
2. Keep dry and away from moist and corrosive materials.
3. To clean, wipe surface with dry cloth.

Section VII: Product Specifications

Battery: 2000mAh Lithium Polymer

Input: Micro-USB: 5VDC, 1.0A

Output: Apple Lightning: 5V, 1.0A

Section VIII: Troubleshooting

My device is not charging: Confirm that your Freedom 2000 power case has power (by pressing the battery icon button). If the battery icon is red, there isn't enough power to charge your iPhone 5 – please recharge. If your Freedom 2000 power case is charged up, make sure the Apple Lightning connector is properly connected to your iPhone 5. **Press the battery icon button to begin charging.** If this still doesn't work, use your iPhone 5 charging cable to make sure the device is working properly.

For additional troubleshooting information and device compatibility, please visit: **www.mycharge.com**

ONE YEAR LIMITED WARRANTY

RFA BRANDS, LLC sells its products with the intent that they are free of defects in manufacture and workmanship for a period of one year from the date of original purchase, except as noted below. RFA BRANDS, LLC warrants that its products will be free of defects in material and workmanship under normal use and service. This warranty extends only to consumers and does not extend to Retailers.

To obtain warranty service on your RFA BRANDS, LLC products, contact a Consumer Relations Representative by telephone at 1-888-251-2026 for assistance. Please make sure to have the model number and serial number of the product available.

RFA BRANDS, LLC does not authorize anyone, including, but not limited to, Retailers, the subsequent consumer purchaser of the product from a Retailer or remote purchasers, to obligate RFA BRANDS, LLC in any way beyond the terms set forth herein. This warranty does not cover damage caused by misuse or abuse; accident; the attachment of any unauthorized accessory; alteration to the product; improper installation; unauthorized repairs or modifications; improper use of electrical/power supply; loss of power; dropped product; malfunction or damage of an operating part from failure to provide manufacturer's recommended maintenance; transportation damage; theft; neglect; vandalism; or environmental conditions; loss of use during the period the product is at a repair facility or otherwise awaiting parts or repair; or any other conditions whatsoever that are beyond the control of RFA BRANDS, LLC.

This warranty is effective only if the product is purchased and operated in the country in which the product is purchased. A product that requires modifications or adoption to enable it to operate in any other country than the country for which it was designed, manufactured, approved and/or authorized, or repair of products damaged by these modifications is not covered under this warranty.

THE WARRANTY PROVIDED HEREIN SHALL BE THE SOLE AND EXCLUSIVE WARRANTY. THERE SHALL BE NO OTHER WARRANTIES EXPRESS OR IMPLIED INCLUDING ANY IMPLIED WARRANTY OF MERCHANTABILITY OR FITNESS OR ANY OTHER OBLIGATION ON THE PART OF THE COMPANY WITH RESPECT TO PRODUCTS COVERED BY THIS WARRANTY. RFA BRANDS, LLC SHALL HAVE NO LIABILITY FOR ANY INCIDENTAL, CONSEQUENTIAL OR SPECIAL DAMAGES. IN NO EVENT SHALL THIS WARRANTY REQUIRE MORE THAN THE REPAIR OR REPLACEMENT OF ANY PART OR PARTS WHICH ARE FOUND TO BE DEFECTIVE WITHIN THE EFFECTIVE PERIOD OF THE WARRANTY.

NO REFUNDS WILL BE GIVEN. IF REPLACEMENT PARTS FOR DEFECTIVE MATERIALS ARE NOT AVAILABLE, RFA BRANDS, LLC RESERVES THE RIGHT TO MAKE PRODUCT SUBSTITUTIONS IN LIEU OF REPAIR OR REPLACEMENT.

This warranty does not extend to the purchase of opened, used, repaired, repackaged and/or resealed products, including but not limited to sale of such products on Internet auction sites and/or sales of such products by surplus or bulk resellers. Any and all warranties or

guarantees shall immediately cease and terminate as to any products or parts thereof which are repaired, replaced, altered, or modified, without the prior express and written consent of RFA BRANDS, LLC .

This warranty provides you with specific legal rights. You may have additional rights which may vary from state to state. Because of individual regulations, some of the above limitations and exclusions may not apply to you. For more information regarding our product line in the USA, please visit: **www.mycharge.com**

myCharge Service Center

Telephone: (888) 251-2026

Hours: 8:30am-7pm (ET) Monday-Friday

E-mail: cservice@mycharge.com

WARNINGS

Read all instructions and warnings prior to using this product. Improper use of this product may result in product damage, excess heat, toxic fumes, fire or explosion, for which RFA BRANDS, LLC is not responsible.

1. Do not store battery in high temperature environment, including intense sunlight or heat. Do not place battery in fire or other excessively hot environments.
2. Be cautious of excessive drops, bumps, abrasions or other impacts to this battery. If there is any damage to the battery such as dents, punctures, tears, deformities or

corrosion, due to any cause, discontinue use and contact the manufacturer or dispose of it in an appropriate manner.

3. Do not disassemble the battery or attempt to repair or modify it in any manner.
4. Do not expose this battery to moisture or submerge it in liquid. Keep battery dry at all times.
5. Do not attempt to charge battery using any other method, apparatus, or connections other than the device's USB connector or wall prongs. For directions on the various ways to charge your myCharge product please refer to the owner's manual.
6. Do not attempt to replace any part of the battery.
7. If this battery is intended by the Purchaser to be used by a minor, purchasing adult agrees to provide detailed instructions and warnings to any minor prior to use. Failure to do so is the sole responsibility of the purchaser, who agrees to indemnify the Manufacturer for any unintended use or misuse by a minor.
8. All batteries have gone through a thorough quality assurance inspection. If you find that your battery is excessively hot, deformed, cut, emitting odor, experiencing or demonstrating an abnormal phenomenon, immediately stop all battery use and contact the manufacturer.

9. For extended storage, first fully charge your battery .
10. Never dispose of batteries in the garbage. This is unlawful under state and federal environmental laws and regulations. Always take used batteries to your local battery-recycling center.

Note: The Manufacturer is not responsible for any damages one may suffer as a result of use, intended or unintended, or misuse of this battery in conjunction with any device or accessory other than the appropriate entertainment device for which this battery is designed.

FCC COMPLIANCE STATEMENT

This device complies with Part 15 of the FCC Rules.

Operation is subject to the following two conditions: (1) this device may not cause harmful interference, and (2) this device must accept any interference received, including interference that may cause undesired operation.

Note: The manufacturer is not responsible for any radio or TV interference caused by unauthorized modifications to this equipment. Such modifications could void the user authority to operate the equipment.

Note: This equipment has been tested and found to comply with the limits for a Class B digital device, pursuant to Part 15 of the FCC Rules. These limits are designed to provide reasonable protection against harmful interference in a residential installation. This equipment generates, uses, and can radiate radio frequency energy and, if not installed and used in accordance with the instructions, may cause harmful interference to radio communications. However,

there is no guarantee that interference will not occur in a particular installation. If this equipment does cause harmful interference to radio or television reception, which can be determined by turning the equipment off and on, the user is encouraged to try to correct the interference by one or more of the following measures:

- Reorient or relocate the receiving antenna.
- Increase the separation between the equipment and receiver.
- Connect the equipment into an outlet on a circuit different from that to which the receiver is connected.
- Consult the dealer or an experienced radio/TV technician for help.

myCharge Service Center

Telephone: (888) 251-2026

Hours: 8:30am-7pm (ET) Monday-Friday

E-mail: cservice@mycharge.com