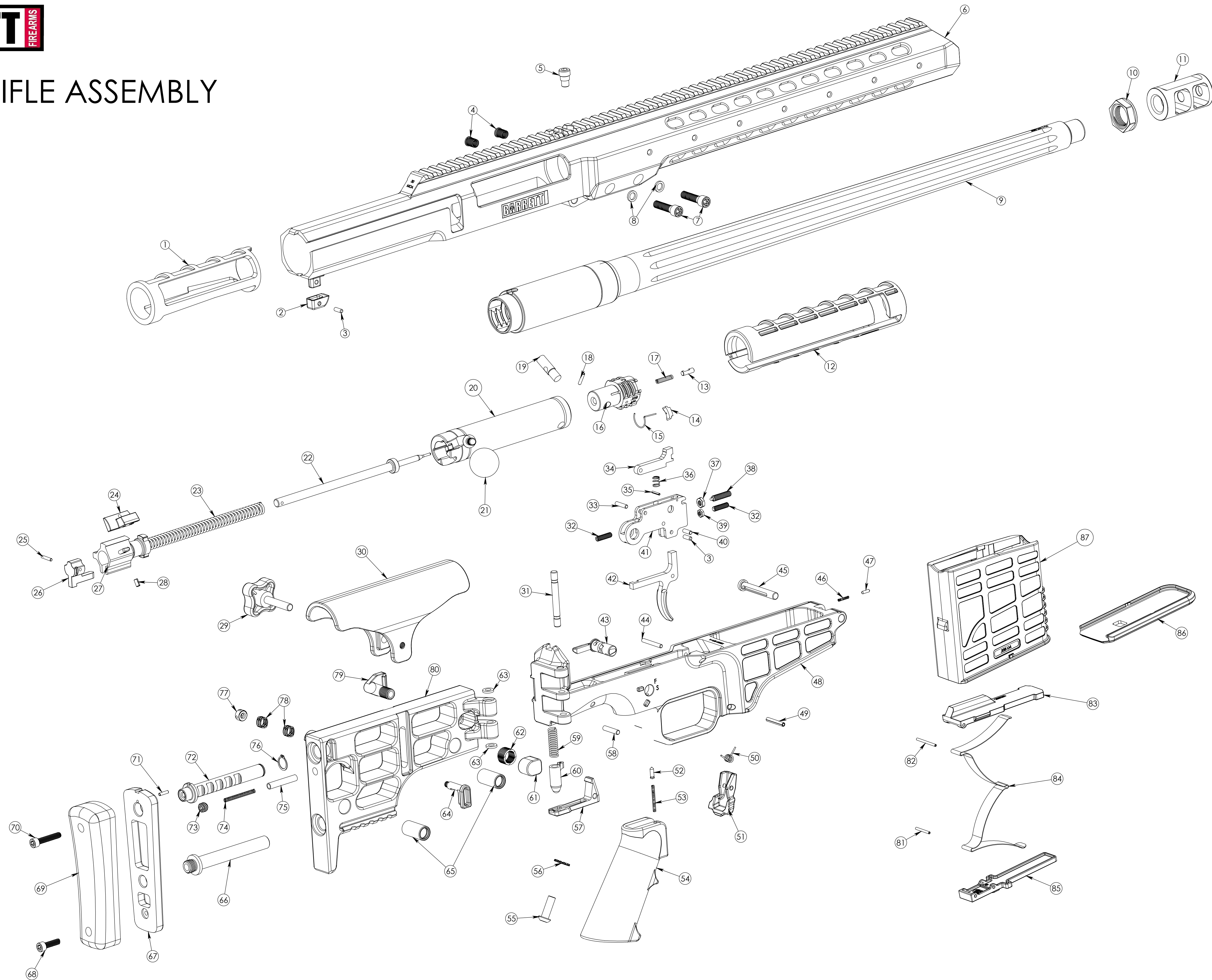




MRAD RIFLE ASSEMBLY

10/29/2012



* ARE SUBJECT TO CHANGE

10/29/2012

ITEM NO.	PART NO.	PART NAME	QTY/RIFLE
1	* 12652	FRONT BOLT GUIDE	1
2	98110	RECEIVER LATCH SEAT	1
3	13810	DP .125 X .365	2
4	13114	TIME SERT	2
5	13387	INDEX PIN	1
6	13517 (BLK)/ 13543 (BRWN)	UPPER RECEIVER	1
7	13495	BARREL SCREW	2
8	12466	BARREL SCREW WASHER	2
9	* 13720	BARREL COMPLETE, .338LM (24.5") SS FLUTED	1
10	* 13769	MUZZLE BRAKE NUT	1
11	* 13663	MUZZLE BRAKE	1
12	* 12653	REAR BOLT GUIDE	1
13	98205	EJECTOR	1
14	* 98203	EXTRACTOR	1
15	* 98204	EXTRACTOR SPRING	1
16	* 13013	BOLT .338	1
17	98206	EJECTOR SPRING	1
18	0A206	RP .093 X .500	1
19	* 98211	BOLT PIN	1
20	* 12398	BOLT TUBE COMPLETE	1
21	98210	BOLT HANDLE KNOB	1
22	12862	FIRING PIN	1
23	13473	FIRING PIN SPRING	1
24	* 98215	BOLT STOP	1
25	0B204	DP .093 X .500	1
26	* 13847	COCKING PIECE	1
27	* 13848	COCKING PIECE SHROUD	1
28	0A216	RP .125 X .250	1
29	98331	CHEEK PIECE LOCK KNOB	1
30	98330	CHEEK PIECE	1
31	12305	FOLDING STOCK ASSEMBLY PIN	1
32	0G101	8-32 X .625 SOCKET HD SET SCREW	2
33	0B206	DP .125 X .562	1
34	98315	SEAR	1
35	0A202	RP .062 X .375	1
36	98316	SEAR SPRING	1
37	0J401	10-32 X .312 NUT	1
38	98312	TRIGGER WEIGHT SCREW	1
39	0J400	8-32 X .25 NUT	1
40	0B300	RP .125 X .375	1
41	98307	TRIGGER HOUSING	1
42	98308	TRIGGER	1
43	98319	REVERSIBLE SAFETY	1
44	0B207	DP .125 X 1.00	1

ITEM NO.	PART NO.	PART NAME	QTY/RIFLE
45	12302	RECEIVER ASSEMBLY PIN	1
46	12304	ASSEMBLY PIN SPRING	1
47	12303	ASSEMBLY PIN PLUNGER	1
48	13516 (BLK)/12607 (BRWN)	LOWER RECEIVER	1
49	0A208	RP .125 X .875	1
50	98325	MAGAZINE CATCH SPRING	1
51	98324	MAGAZINE CATCH	1
52	82056	SAFETY DETENT	1
53	68033	SAFETY SPRING	1
54	13890	PISTOL GRIP	1
55	12589	.25-28 BUTTON HD CAP SREW	1
56	0H206	ETLW.25	1
57	98326	RECEIVER LATCH	1
58	0B201	DP .156 X .750	1
59	98328	RECEIVER LATCH SPRING	1
60	98327	RECEIVER SAFETY LATCH	1
61	13518	FOLDING STOCK BUTTON	1
62	12299	FOLDING STOCK SPRING	1
63	12306	FOLDING STOCK BUSHING	2
64	12524	CROSS LOCK PIN	1
65	98302	SLING BUSHING	2
66	12526	LOWER GUIDE ROD	1
67	13514	RECOIL PAD BASE PLATE	1
68	12532	LOWER BUTTPAD SCREW	1
69	98304	RECOIL PAD	1
70	12533	UPPER BUTTPAD SCREW	1
71	12549	UPPER GUIDE ROD INDEX PIN (DP.093X.375)	1
72	12521	UPPER GUIDE ROD	1
73	82063	BOLT LATCH SET SCREW	1
74	12530	BOLT HANDLE LATCH SPRING	1
75	12531	BOLT HANDLE LATCH	1
76	12525	RETAINING RING	1
77	12523	ADJUSTMENT BUTTON	1
78	12529	ADJUSTMENT BUTTON SPRING	2
79	12295	FOLDING STOCK LATCH	1
80	12611	ADJUSTABLE FOLDING STOCK	1
81	* 13213	MAGAZINE RETAINING PIN	1
82	* 13214	MAGAZINE FOLLOWER RETAINING PIN	1
83	* 12844	MAGAZINE FOLLOWER	1
84	* 13192	MAGAZINE SPRING	1
85	* 12866	MAGAZINE FLOOR PLATE RETAINER	1
86	12881 (BLK)/ 12845 (BROWN)	MAGAZINE FLOOR PLATE	1
87	* 12843, 12848, 12853	MAGAZINE BODY (BROWN)	1
87	* 12879, 12883, 12886	MAGAZINE BODY (BLK)	1