

# MULLICAN<sup>®</sup> FLOORING

## Austin Springs LOC-TO-FIT

### Engineered Floating Installation Instructions

## FLOATING INSTRUCTIONS

### ATTENTION

Inspect **ALL** materials carefully **BEFORE** installation. Warranties **DO NOT** cover materials that are installed with visible defects.

It is the responsibility of the installer/owner to determine if the job site subfloor and job site conditions are environmentally and structurally acceptable for wood floor installation. Mullican Flooring declines any responsibility for wood floor failure resulting from or connected with subfloor, subsurface, job site damage or deficiencies after hardwood flooring has been installed.

### CHECKLIST

- Store the boxes in the room climate and open boxes when you install.
- This floor will be floating installed, i.e. expansion space is required at all vertical obstructions.
- Measure the room, decide installation direction. Note the limitations as per below – due to natural behavior of wood!
- Floor heating – see special advices and requirements – follow the instructions from the heat system supplier!
- Check your floor continuously during the installation. Installed defect boards are not covered by warranty.
- Keep always the right room climate 35-55% RH at 64-75°F.
- To preserve your floor, clean and maintain your floor correctly.

## GENERAL INFORMATION

### Preparation of subfloor

Subfloor irregularities and undulation may cause any wood flooring installation to develop hollow spots between the flooring and subfloor. These hollow spots are NOT the result of any wood floor manufacturing defect and are NOT covered by the Mullican Flooring warranty.

### Thoroughly clean and test subfloor

Remove paint, wax, oil, plaster, "sheetrock mud" and other foreign materials, as well as obvious surface irregularities. Sweep or vacuum thoroughly. All previous or existing glues or adhesives must be removed before installing new hardwood flooring.

Make certain building interior and subfloor are dry. Interior walls should be dry enough to be painted and a room temperature of 60°F min. and a relative humidity of 35-55% should be provided before any installation is begun. If subfloor is concrete, check for dryness. Concrete subfloors must be clean, flat, sound and of sufficient compression strength.

Concrete Subfloor Moisture Content: Using a calcium chloride test, the concrete slab must be 5 lbs. or below or be reduced to 5 lbs. or below. Sections not flat due to waviness, trowel marks, etc. are to be flattened by grinding or the use of a leveling compound. Especially along the walls, the subfloor levelness must be checked and if necessary improved. Flatten to 3/16" in 10' radius. In addition to cement subfloors, these products can be installed over dry, level wood subfloors such as plywood. If moisture is present, do not lay. All concrete subfloors on or below grade can also be tested using a Delmhorst moisture meter, Tramex Concrete Encounter or Wagner Concrete Meter. (Check floor in several locations). Consult with your local Mullican Flooring distributor for geographic variances.

New wood type subfloors should also be checked for moisture using a moisture meter. In general, wood or plywood subfloors should not exceed 14% moisture content or 4% moisture content difference between wood flooring and subfloor. Check with your local distributor for your geographical variances. If the plywood is used as an overlay over an existing subfloor, the thickness of the overlay material must be such as to yield a total 23/32" subfloor thickness. Flatten to 3/16" to 10' radius.

As part of your subfloor preparation remove any existing base, shoe mold or doorway thresholds. These items can be replaced after installation, but should be replaced in such a way as to allow at least 1/2" room for expansion around the perimeter of the room. All door casings should be notched out or undercut to allow 1/2" room for expansion and to avoid difficult scribe cuts. This is easily done by placing a piece of the engineered product on the subfloor as a height guide for your handsaw or jamb saw.

**Note:** Normally, expansion space around room should be the same distance as the thickness of the hardwood flooring.

### Firm and Clean

Cross check old wood floors, nail/screw to eliminate squeaking. Sweep or vacuum clean your floor – work clean!

### Floor Heating

Installation over subfloor heating – some important issues.  
Max allowed temperature on top of the wood floor is 75°F.

- Only install Oak over floor heating, Other wood species are, due to their natural properties, sensitive to heat, which can cause joint openings, concave warping or squeaking.

Important: Follow the heating regulation recommendations given by the system supplier.

Please note two-in-one foam underlay must be placed on top of the subfloor either made of cement screed /concrete, wood subfloor foam underlay only.

Separate floor areas not having subfloor heating with expansion joints.

## INSTALLATION PREPARATIONS

### General

Measure the area to be installed and define the installation direction.

It is recommended to install the length direction of the planks parallel to the main light direction.

### Floating installation

Your floor is made to be installed floating without glue except starting and finishing rows (See figures on page 2.): Leave an open expansion gap around the whole perimeter (use wedges), i.e also at pipes, stairs, columns, door frames and thresholds.

The floor must be able to move free – do not connect or install tight to any vertical obstruction.

Contact your distributor for further information.

## AFTER THE INSTALLATION

### Room climate – humidifier or dehumidifier needed ?

At all times, the recommended room relative humidity (RH) of 35-55% and temperature of 68-78°F should be kept. If necessary install a humidifier/ dehumidifier to ensure the best climate for yourself, furniture and your floor.

- Room temperature should not vary more than 15°F season to season.

### NOTE:

**Caution:** Proper humidity must be controlled between 35-55% for successful performance before, during and after installation.

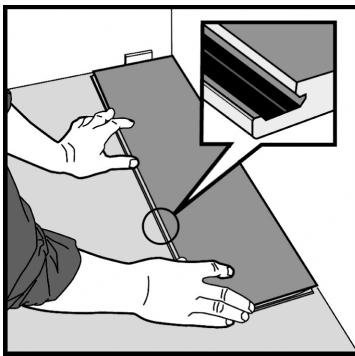
### Installing the floor:

- The floor should be installed from several cartons at the same time to ensure color and shade mix.
- End joints should never be closer than 9 inches or half the distance of the plank from each other. (See figure 8.) Avoid H-joints.
- Install base and molding after floor installation.

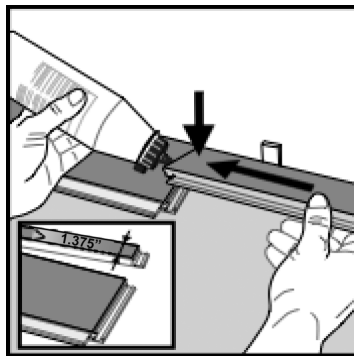
### Floor protection furniture, entrances

Stick felt pads to chair and other pieces of furniture legs. Place doormats at out door entrances.

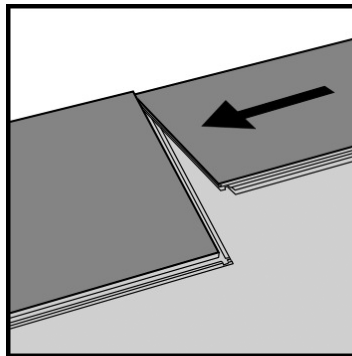
- Do not mop floors.
- For maintenance see [www.mullicanflooring.com/products/FloorCare.html](http://www.mullicanflooring.com/products/FloorCare.html)
- For full glue-down installation instructions, refer to Mullican Flooring engineered glue-down instructions.



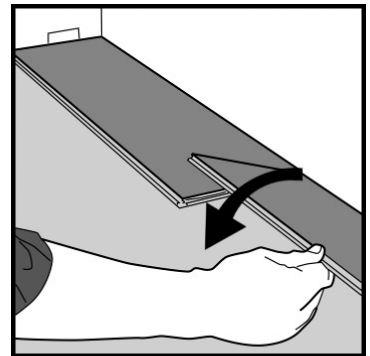
**Fig 1.**  
First plank, first row. Start in a left-hand corner of the room with the locking strip (groove) facing the room. Remember to leave a gap between the wall (left) and the board. It is practical to adjust the gap between the long sides and the wall later, when three rows have been installed.



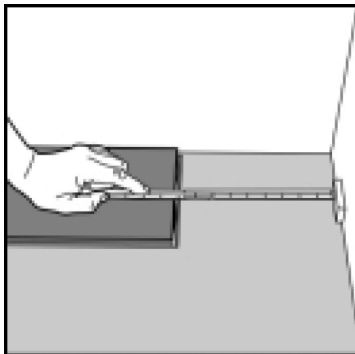
**Fig 2.**  
Joining length cut panels. First row(s). Glue the joint with white glue, put a weight over until the glue has hardened.



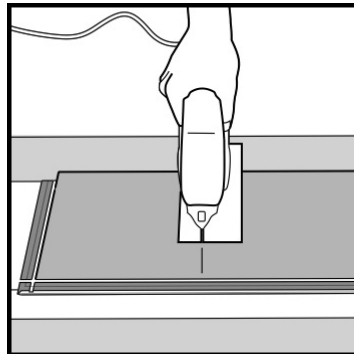
**Fig 3.**  
Second plank, first row. Place next floorboard tight to the short end of the first one in the corner.



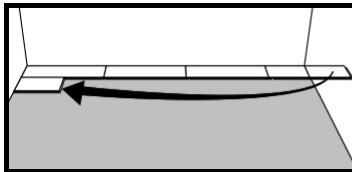
**Fig 4.**  
Then fold down with a single action movement. Make sure the long sides of the planks make a straight line. Complete the first row in the same way.



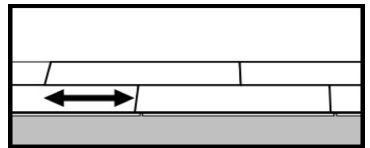
**Fig 5.**  
At the end of the first row, put a distance of 1/2", to the wall and measure the length of the last plank to fit.



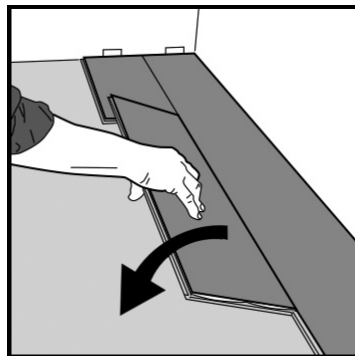
**Fig 6.**  
Cut with a saw – hardwood turned down or with a hand saw with the hardwood visible.



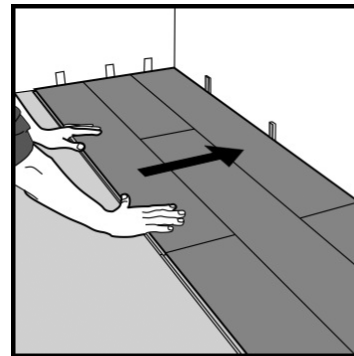
**Fig 7.**  
Second row.



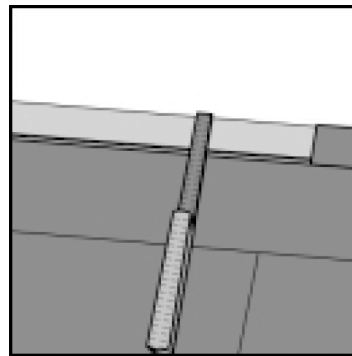
**Fig 8.**  
General. Minimum distance between short ends of planks in parallel rows shall not be less than 9" or half the distance of the plank.



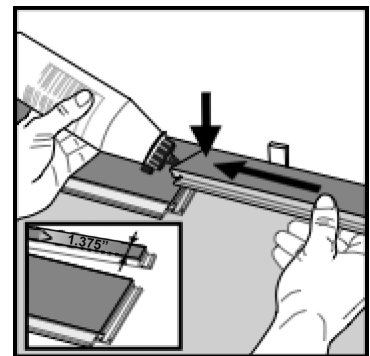
**Fig 9.**  
Second plank second row. Place the floorboard tight to the short end of the previous panel and fold down in a single action movement.



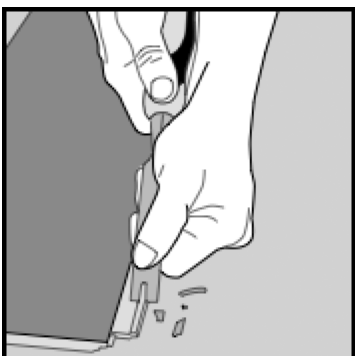
**Fig 10.**  
After 2-3 rows. Adjust the distance to the front wall by placing distances ≈ 1/2".



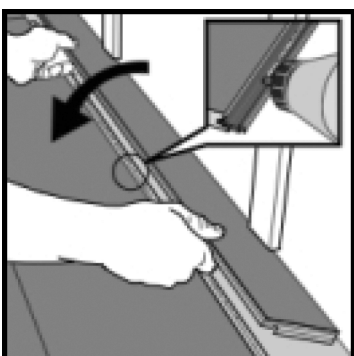
**Fig 11.**  
Last row. Cut the panels lengthwise and glue the short ends.



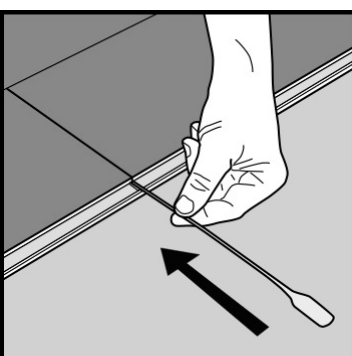
**Fig 12.**  
Joining length cut panels. First/last row(s). Glue the joint with white glue, put a weight over until the glue has hardened.



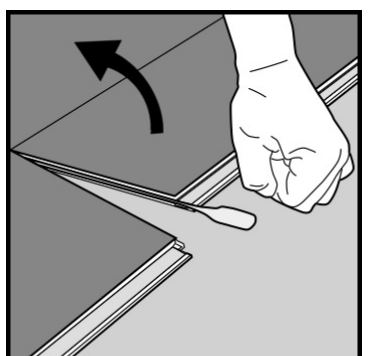
**Fig 13.**  
Horizontal installation (where angling is not possible). Cut off the locking element by using for example a chisel.



**Fig 14.**  
Put white glue along the adjusted profile and press the panels horizontally together.



**Fig 15.**  
Press the tool into the joint (pressing the flexible tongue to side). Make sure that the correct side of the tool is facing up.



**Fig 16.**  
Lift the right panel(s) up and remove the panel.