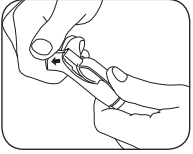
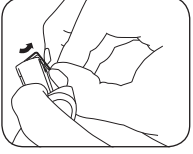


Instructions

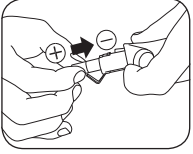
Battery Change Procedure



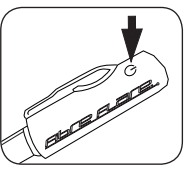
1. Grip and peel back the silicone skin cap at each end until the metal battery latch is accessible.



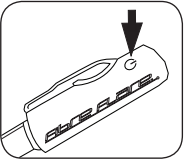
2. Open the battery latch at each end using your thumb and index finger to 'LIFT' it from the catch.



3. Insert battery into each end with positive (+) facing outwards: Uses 2 x AAA (LR03) 1.5Volt batteries.

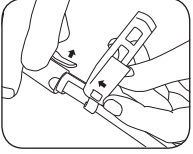


4. Close metal latch by pushing down on the end with your thumb.

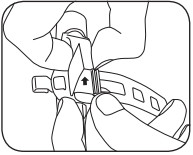


5. Fit Silicone skin cap back into place.
- To turn 'ON' press the circular power icon on the side of the silicone cap
 - Press a Second time to active 'STROBE'
 - Press a Third time to turn 'OFF'

Ladder Sling Fitting Procedure



1. While lifting the Fabric Clip with your Thumb and Index finger, slide the Ladder Sling over the fabric clip through the location loop with the flap pointing up.

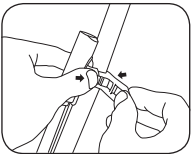


2. Slide the sling all the way across the fabric clip using Thumb and Index finger until it is in position.

Patents Pending.

Ladder Sling Fastening Tips

Using the Ladder Sling, Fibre Flare™ can be easily attached to different locations on your bike frame by wrapping it around the frame and latching it to the 'hook' e.g. The rear stay or seat post etc.



Use the different 'rungs' on the Ladder Sling to allow you to fasten it to small or large size tubes.

If using the Ladder Sling on thin tubes (like the rear stay) use the lowest 'rung' to give the tightest fit. The excess sling can be easily tucked in under the Fabric Clip to give a neat appearance.

The silicone flap is designed to go between the Ladder Sling 'hook' and the bike frame so only silicone is touching the frame when it is fastened to the bike.

If using Fibre Flare™ on the Top Tube of the bike frame, be aware that it will provide excellent sideways illumination to others but will not be visible from the rear.

WARNING: If using the Ladder sling on the rear stay, be sure it is as tight as possible and clear of the gears and chain. If your rear stay is too thin for the tightest 'rung' on the Ladder Sling and it is still loose when on the lowest 'rung' DO NOT USE IN THE REAR STAY POSITION as it could be a hazard.

Fastening Fibre Flare™ to Bike Jersey Procedure

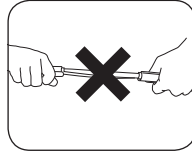
1. Using the Fabric Clip 'hook' the end without the power button to the centre jersey pocket (or to the pocket that will be closest to the passing traffic).

NOTE: It is much easier to access the power button when riding when it is at the bottom of the jersey.

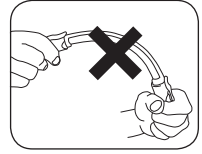
2. Pull the bottom hem of your jersey downwards so it is tight.
3. Using the Fabric Clip 'hook' the other end (with the power button) to the bottom hem of jersey.
4. Pull the bottom hem of your jersey downwards again so it is tight and ensure the clips are well fastened to the fabric.

Care Instructions / Cautions

- Before Every Ride, always check to see the Fibre Flare™ is securely attached and clear from chain and gears
- Before Every Ride, check to see that no moisture is present inside the battery chamber (If water is present, thoroughly dry and replace old batteries with new batteries)
- Do not submerge in water; If product fails due to water contacting the electronics, simply remove batteries and allow to dry (insert fresh batteries once dry)
- If using for long periods in wet weather; after use, open silicone skin caps and remove the batteries at both ends; ensure the internals are dry before reinserting batteries
- Clean Fibre Flare™ with a clean damp cloth; Always keep fibre optic clean to ensure maximum brightness
- When opening/closing the silicone cap to access the battery compartments; do not use excessive force and/or over-stretch the silicone cap when opening or closing the cap.
- Keep an eye on the illumination brightness of the Fibre Optic; if it appears dull your batteries are flat and need replacing
- Carefully install batteries, ensuring proper polarity
- Use quality Alkaline batteries or Lithium batteries
- Never mix old and new batteries; Never mix disposable and rechargeable batteries
- Rechargeable batteries can be used, however may not last as long as disposables - keep an eye on illumination brightness and recharge accordingly



DO NOT TWIST



DO NOT BEND PAST 45°

WARNINGS AND CORRECT USE FOR Fibre Flare™ 'SIDE LIGHT'

- Fibre Flare™ 'SIDE LIGHTS' are specifically intended to enhance cyclists ability to be seen from a side on perspective (from the left or right) and are designed to be used in combination with regulatory FRONT and REAR (Tail) Lights.
- When using Fibre Flare™ 'SIDE LIGHTS', always use in combination with regulatory FRONT and REAR (Tail) Lights.
- Fibre Flare™ 'SIDE LIGHTS' are designed to be mounted on the on the Top Tube, Down Tube or the inner side of the Seat Tube (facing the head tube) of the bike frame only.
- When mounting on Fibre Flare™ 'SIDE LIGHTS' on the outside of the Down Tube be sure it is clear of the front tire/wheel.
- Fibre Flare™ 'SIDE LIGHTS' will provide excellent sideways illumination but will not always be visible from the front or rear.
- Do not use Fibre Flare™ 'SIDE LIGHTS' as a regulatory Front or Rear (Tail) Light.
- Do not mount Fibre Flare™ 'SIDE LIGHTS' on the Rear Stays, Rear Side of the Seat Tube (facing away from the head tube), Seat post, Head Tube, Handle Bars, Forks, Cranks, Wheels, Clothing or Bags.
- If in doubt about the legality of using Fibre Flare™ 'SIDE LIGHTS' in your area, check your local laws and regulations for bicycle illumination before using Fibre Flare™ 'SIDE LIGHTS'.



Patents Pending.

Copyright 2008 A.L.L. Innovations Pty Ltd.

'Fibre Flare™' and 'Be Seen Feel Safer' are trademarks of A.L.L. Innovations Pty. Ltd.

Designed in Australia.

Made in China.

www.fibreflare.com

