

Application Instructions

First Time Use

Using Acquarella Conditioner, follow the diagram below and repeat the cycle each day for three days. Make sure to remove all existing Conditioner each day before reapplication and buff nails only on the first day. This process “detoxifies” your nails from residual oils and emollients. After the third day, you are ready for Acquarella Nail Polish.

Helpful Hint: Try applying Acquarella fifteen to twenty minutes before retiring in the evening. This allows the polish to “cure” while you sleep for better wear.

Everyday Use



Removal

Using only a cotton pad moistened with Acquarella Remover, swab nails to remove polish. After removal, rinse nails thoroughly in clean water. Failure to rinse nails may prevent polish adhesion.

Note: Acquarella Remover only removes Acquarella Polish – it will NOT remove conventional nail polish products.

Helpful Hint: Try quickly swabbing each nail with Remover before starting removal process. This will soften the polish for faster removal.



Find additional tips and tricks in our online FAQs to help with application and removal.

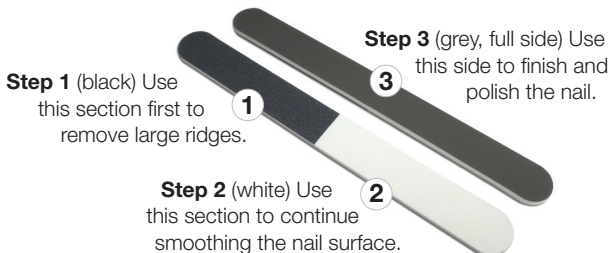
acquarellapolish.com

Buffer Instructions

Moderate Maintenance

Following the three step diagram below, use the 3-way file buffer to smooth major ridges and imperfections on the nail surface.

Helpful Hint: Buff once or twice a month. Avoid overuse as it may cause nail damage.



Going Glossy

Following the two step diagram below, use the Ultra 2-way file buffer to bring a smooth, high gloss shine to the nail surface.

Helpful Hint: Bring back the shine to dull nail polish with the Step 2 side (purple).

