

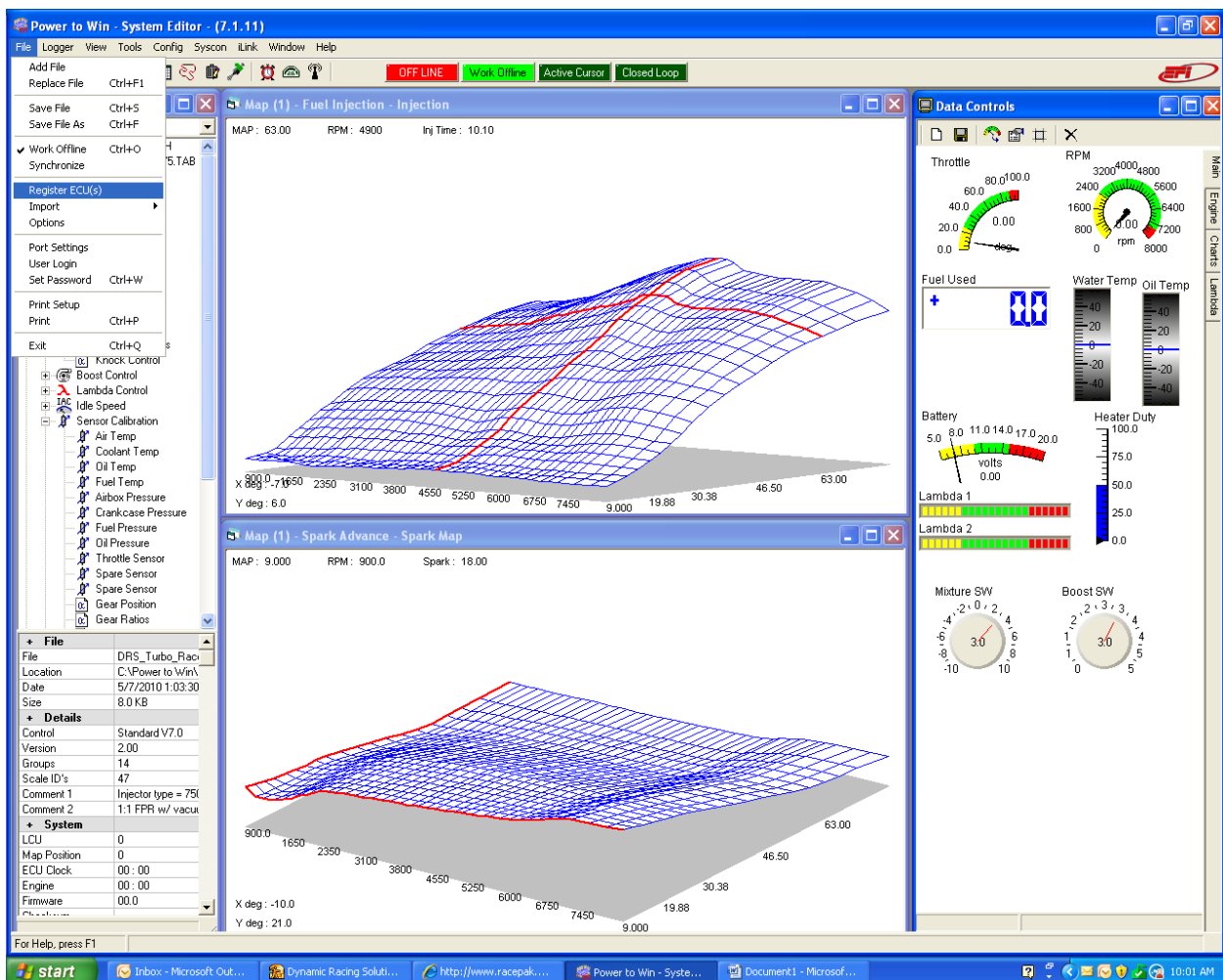


May 14, 2010

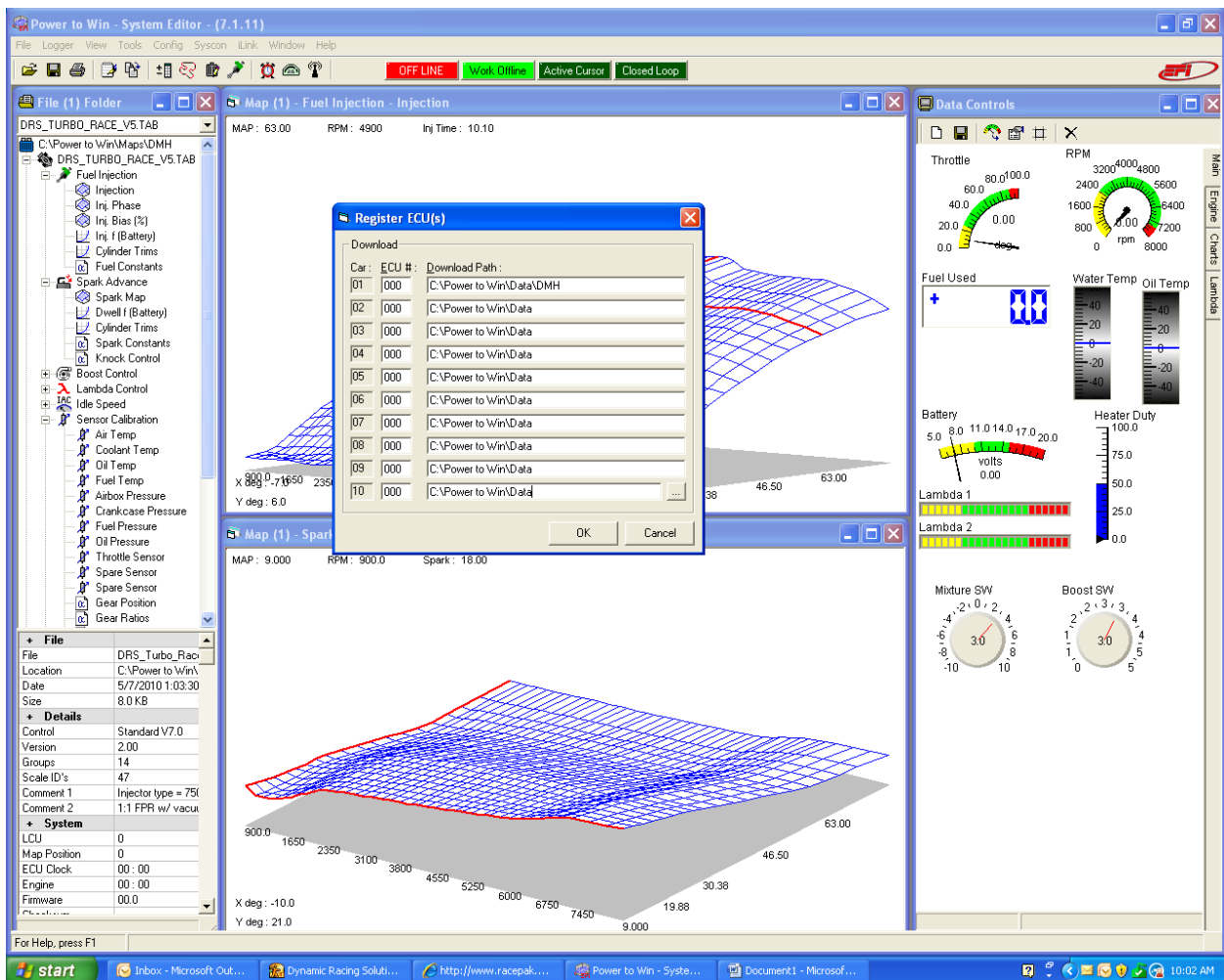
EFI Technology nEditor.exe V7

Procedures for setting up EFI Technology ECU Logger

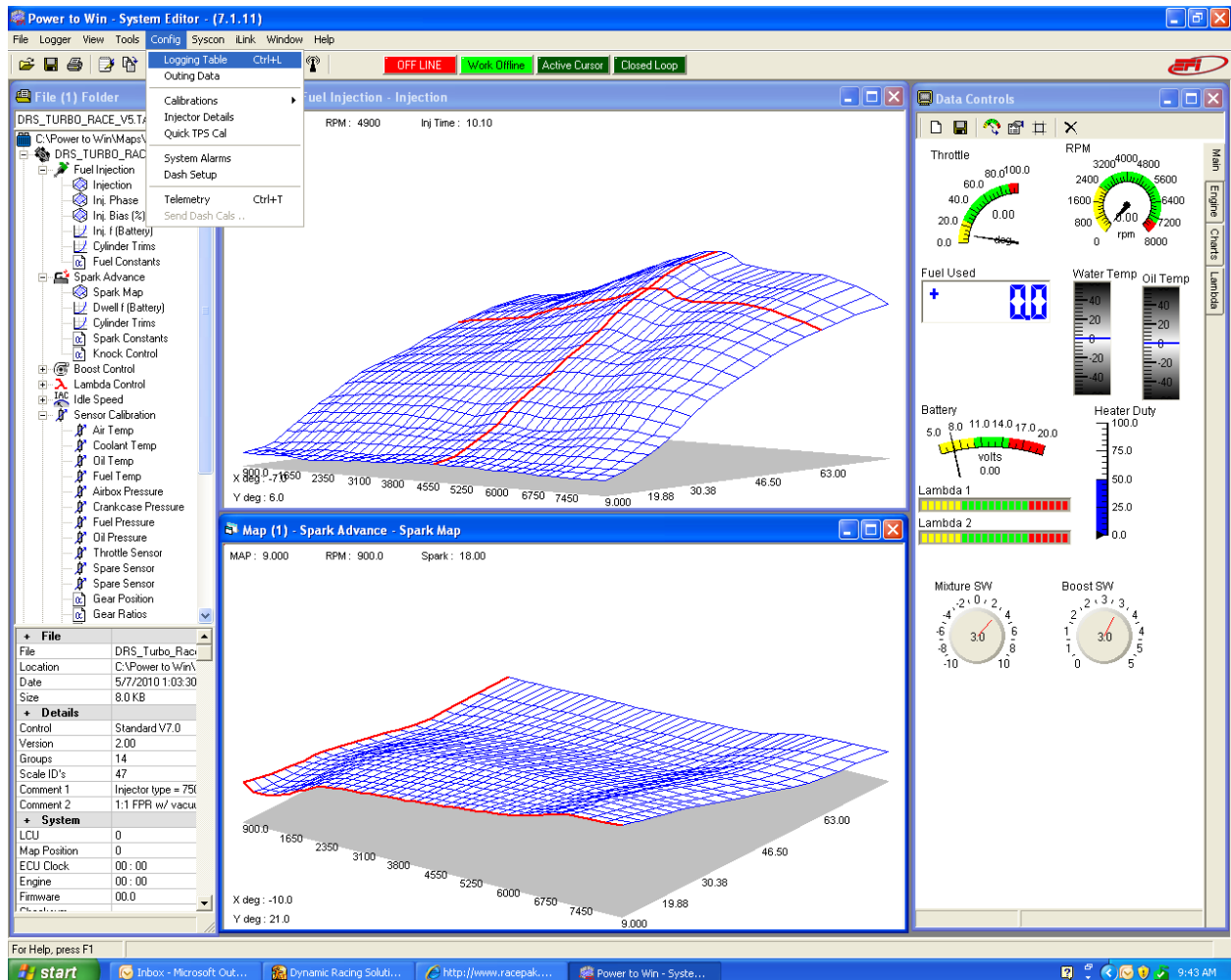
First step is registering the ECU. Under File select Register ECU



Then enter your ECU serial # (this is found in the bottom left of the file folder (3 digits). Also here is where you can create a folder in the "Data" folder in PTW



Select Logging table as shown below (Shortcut is CTRL "L")



Here you can select individual sampling rates per a given channel. I suggest setting up all the critical channels to min of 10 Hz. Less priority channels that do not warrant high frequency, i.e. water temp, can be set as low as 1 Hz to increase logging capacity. Note: Typically only use 100 Hz for diagnosis.

The screenshot displays the Power to Win software interface. The main window shows a 3D surface plot of fuel injection data. Two dialog boxes are open: 'Logging Table' and 'Sample Rate: RPM'.

Logging Table Dialog:

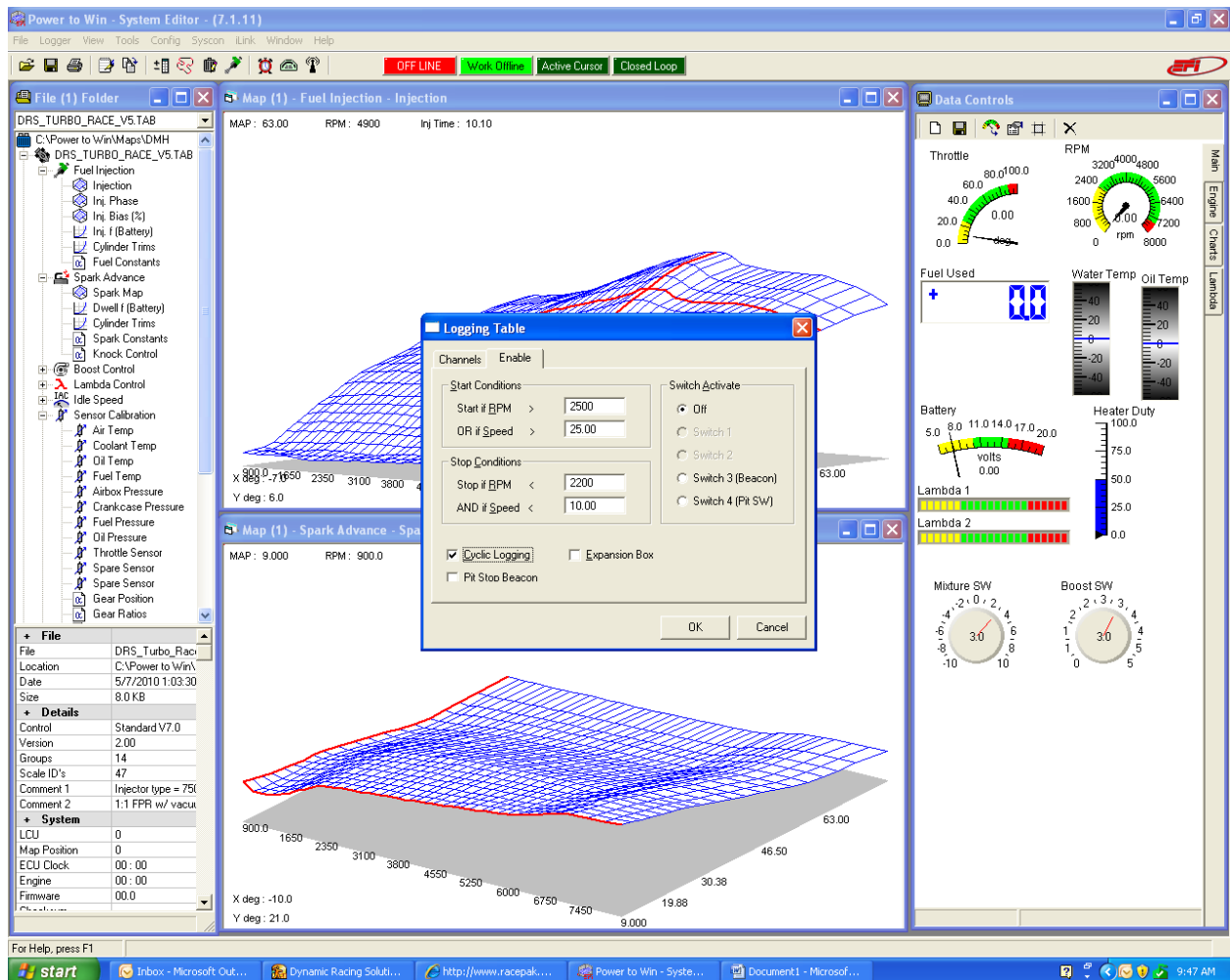
Channel	Rate	ID	Setup
Distance	10	070	Channels Enabled: [030]
Lap count	1	071	Capacity: (kBytes)
Lap time	1	096	[Unknown]
RPM	20	128	Log Time / 512K
Battery	5	129	[24:28.534]
Throttle	20	130	
Airbox pressure	2	131	
Crankcase pressure	2	132	
Fuel pressure	10	133	
Oil pressure	20	134	
ECU Lat G	Off	135	

Sample Rate: RPM Dialog:

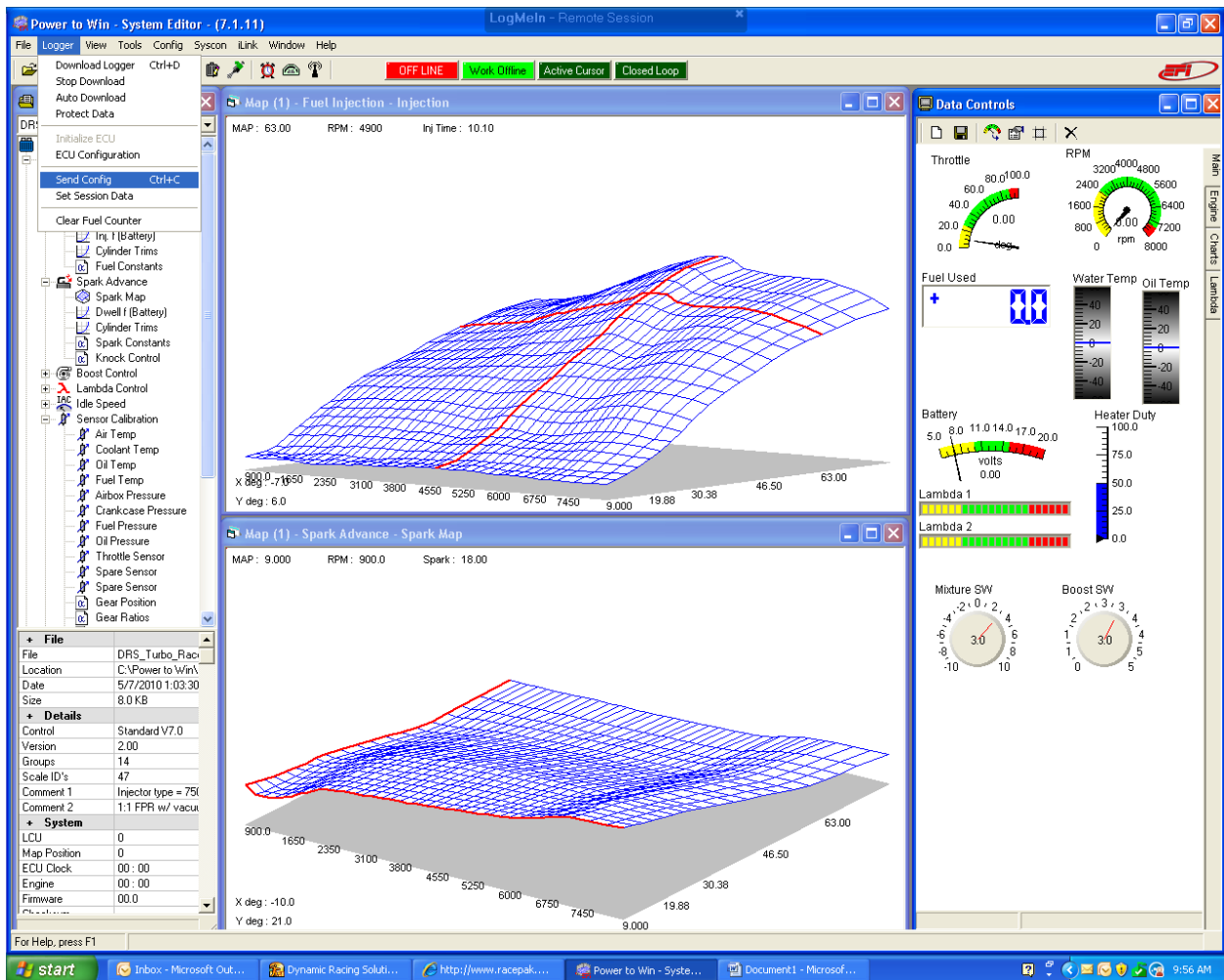
Sample Rate: Off 10Hz 20Hz 1Hz 50Hz 5Hz 100Hz

The background interface includes a file explorer on the left showing 'DRS_TURBO_RACE_V5.TAB', a central 3D plot with axes (X deg: -10.0 to 9.000, Y deg: 6.0 to 21.0), and a right-hand panel with various gauges for Throttle, RPM, Fuel Used, Water Temp, Oil Temp, Battery, Heater Duty, Lambda 1, Lambda 2, Mixture SW, and Boost SW. The status bar at the bottom shows 'OFF LINE' and 'Work Offline'.

Once you set up the channels to log and the rates, click on enable to set up the logging conditions. I suggest starting at 2,500 rpm and stopping at 2,200 rpm. This saves memory from being consumed while at idle or driving around the paddock. Also set to "Cyclic Logging".



Once you complete the Logging Table you send the Configuration to the ECU. The shortcut for this is CTRL "C"



Once the config is sent you can go out for a session and download to use Analysis. The shortcut is CTRL "D".

