



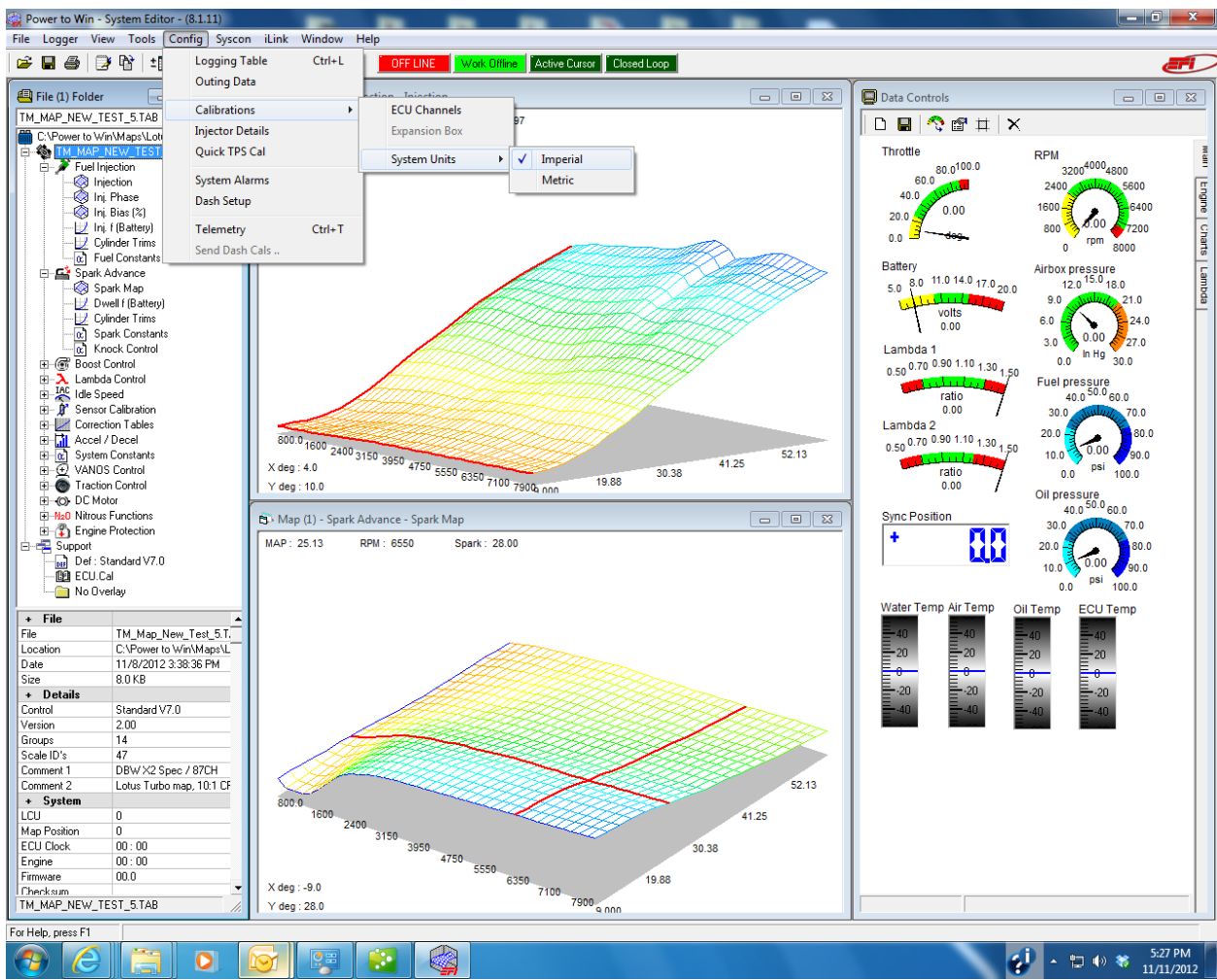
November 11, 2012

EFI Technology nEditor.exe V8

Procedures for setting up Speed on Lotus Dash

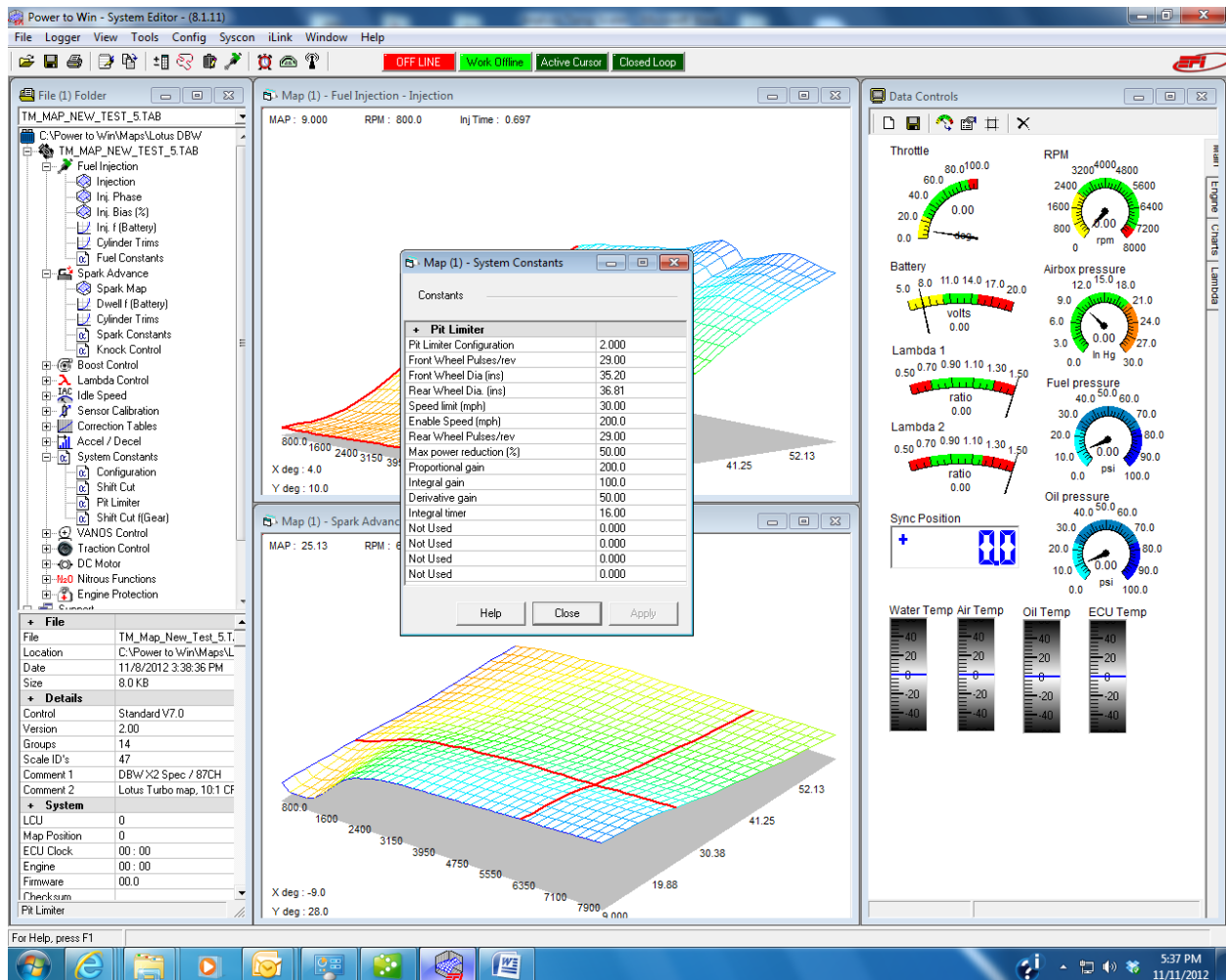
The OEM Lotus dash display is calibrated to display vehicle speed in KPH by default for all models, regardless of the display indicating MPH or the vehicle being a Federalized model for U.S. The ECU configuration corrects this function with a multiplier to correct the speed to MPH when applicable.

Select Config, then select Calibrations, and then select Imperial (for displaying speed in MPH).



Maps for U.S. vehicles that are supplied by DRS will come with the wheel speed diameters multiplied by 1.6 in order to offset the data the dash receives. ECUs are also pre-configured for this before leaving DRS. In the event that your logger has been reset this procedure may be required. The "Config" file lives in the PC interfacing with the ECU, not the map. If your map needs the speed to be fine tuned for your tire size this can also easily be done.

Select System Constants in the file folder on left side of screen; then select Pit Limiter. The diameters are in inch units, however should be multiplied by 1.6 as mentioned above. The pulse per rev is 29 for each wheel.



Note: If logging wheel speed and want to see the actual MPH (not what is multiplied to offset the stock dash), a Math Channel must be created. I.e. Name 'Front Wheel MPH', equation = (Frontwheel/1.6). Repeat process for Rearwheel channel. Math Channels are explained in more detail in the Math Channels documentation. Vehicles using aftermarket displays should have wheel diameters entered in actual inches. Then if desired to log channels in MPH select 'Imperial' units and for KPH select 'Metric'.

