

Liquid Rubber SEAM TAPE™ is a peel and stick application designed to accept Liquid Rubber products onto its polyester backing. SEAM TAPE™ makes the surface water-tight prior to the application of the coating creating a superior, faster method of waterproofing over conventional 3 course applications in many cases.

SEAM TAPE™ Performance Features

- Elasticity
- Conforming
- Advanced Sealant Technology
- Remains Flexible to -50°C
- Bonds to virtually any surface
- Will not harden

Versatility:

SEAM TAPE™ provides numerous residential and commercial solutions. Typical applications include:

- RV Roofs & Slides
- Flat Roofs
- Gutters
- Mobile Homes
- Ponds
- Flashings
- AC Units
- Metal Roofs
- Balconies
- Skylights
- Curbs
- and more

USES:

Bonds to a wide range of surfaces including difficult roof materials such as EPDM, TPO, CSPE/ Hypalon, most PVC, CPE, SBS, APP, asphalt BURs, coal tar BURs, plus all metal roofs, tiles, shingle, aluminum, galvanized steel, gypsum board, wood, polyethylene, propylene, polystyrene, fiberglass, brick, concrete, masonry, OSB, etc. Note – Does not stick to silicone.

PRIMARY BENEFITS:

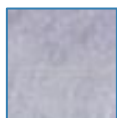
- Easy application
- Ready to apply
- Saves time
- Quick fix

PACKAGING:

SEAM TAPE™ is available in: 2", 4", 6" x 50 ft rolls.

COLOUR SELECTION:

SEAM TAPE™ is available in 1 colour:



Polyester



APPLICATION TOOLS:

SEAM TAPE™ is applied with hands, seam roller and tweezers to remove the backing.

SURFACE PREPARATION:

Surface must be clean and dry, stable and free from spalling, efflorescence, dust, dirt, oils, surface flaking, poorly bonded sealers, salts and other contaminants which may affect adhesion and product performance.

SEAM TAPE™ APPLICATION:

Ambient temperatures should not be less than -20° C, and should not exceed 50° C during application. Install Liquid Rubber Seam Tape™ over the repair area, removing the release liner gradually to prevent contamination of the adhesive prior to application. Rub or roll with pressure using your hand or seam roller to activate bonding process. Release liner can be removed by using a snapping motion and your finger tips or tweezers.

CURE TIME:

Once pressure is applied to the tape, adhesion begins.

SEALING:

Liquid Rubber SEAM TAPE™ is not UV stable and will deteriorate over time. It must be coated with SMOOTH SEALANT™ or WATERPROOF SEALANT™

COMMON ERRORS:

Pulling off the release liner too far and SEAM TAPE™ sticking to itself or areas other than intended.

PRECAUTIONS:

Dispose of unused material in accordance with local, provincial and federal guidelines.