



**supplied:**

- 1. 1 x Kill Switch Adaptor
- 2. 1 x Kill Switch
- 3. 1 x Kill Switch (RED band)
- 4. 1 x 1.5m extension cable
- 5. 1 x 1m angled extension cable
- 6. 4 x Adhesive cable clips

**terminals:**



First we recommend you test the system, plug all the cables together. Direct the carriage one way and find out which button stops the motor. One will stop and the other will not. When the direction button on the controller is flipped the functions are swapped.

# Assembly Guide



1. unscrew grub screw that attaches pulley to the shaft.



2. Take of pulley.



3. Replace with Coupler Washers.



4. Screw in Coupler into the holes of the shaft.



5. Remove the nut and spring washer from the Kill Switch.



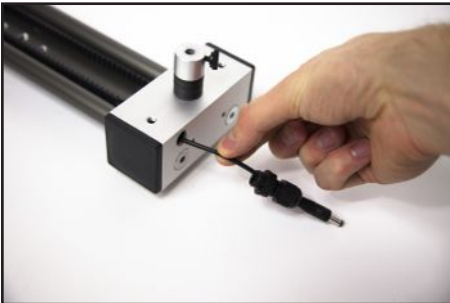
6. Repeat this for both Kill Switches.



7. Insert Kill Switch (**RED** band).



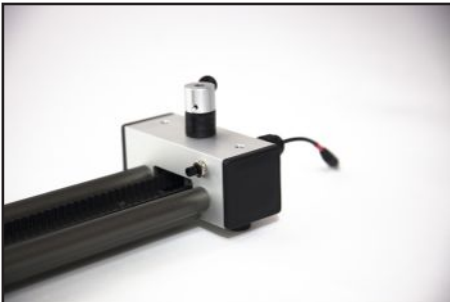
8. Insert Kill Switch (**RED** band) button through otherside...



9. ...and twist clockwise...



10. ...to screw it into place.



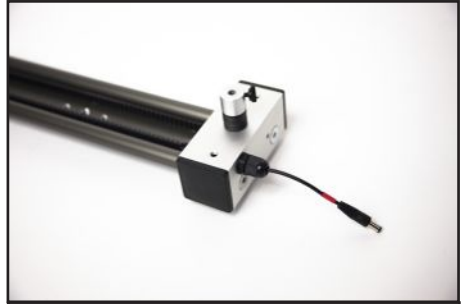
11. Insert washer and fix nut back on Kill Switch (**RED** band).



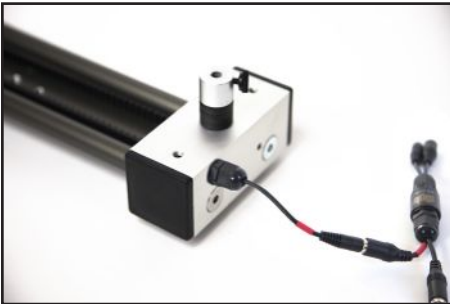
12. Screw the first thread into hole...



13. ...securely.



14. Screw last part in fairly tightly.



15. Attach Kill Switch (**RED** band) to Red band on Adaptor.



16. Screw in Quick Release Motor Mount.



17. Attach extension cables (4 & 5).



18. Attach Motor...refer to



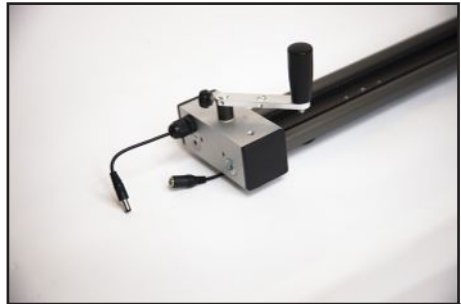
19. Plug into your Motor or SMS Controller, or MX2 Controller.



20. Stick on Cable Clips (6.) to bottom of rail.



21. Zig-zag if necessary.



22. Insert the other Kill Switch (repeat steps 7-14).



23. Connect.

You are now up and running...if you have any problems please contact us on:  
[info@digislidder.co.uk](mailto:info@digislidder.co.uk)