

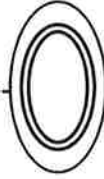
# LUNMAR BOAT LIFTS PILING MOUNT INSTALLATION GUIDE



**4200# SLING KIT AND CRADLE KIT**  
**5600# SLING KIT AND CRADLE KIT**  
**7000# CRADLE KIT**

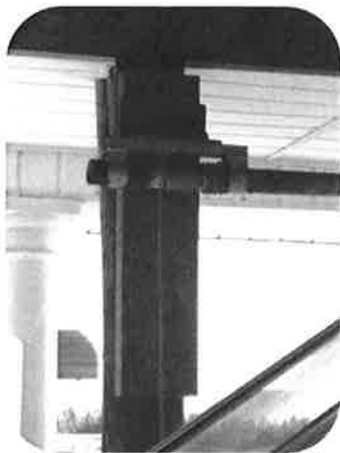


# READ ALL INSTRUCTIONS BEFORE STARTING

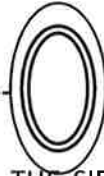


THE PILING MOUNT LIFTS ARE DESIGNED FOR BOATS THAT WEIGH LESS THAN 4200#, 5600#, OR 7000# FULL OF FUEL AND GEAR. THE LUNMAR PILING MOUNT LIFT ATTACHES DIRECTLY TO 4 PILINGS AND REQUIRES NO OVERHEAD STRUCTURAL BEAMS. THE PILINGS WILL SUPPORT THE ENTIRE LOAD, THEREFORE, WE RECOMMEND THIS BE INSTALLED PROFESSIONALLY. "THE PILINGS MUST BE DRIVEN TO REFUSAL." STANDARD INSTALLATION REQUIRES FOUR 8" BUTT PILINGS DRIVEN 10' APART FROM INSIDE OF PILING TO INSIDE OF PILING ON WIDTH AND DOCK SIDE PILING SHOULD BE 10' APART ON BOATS 20' AND LESS; 11' APART ON BOATS LESS THAN 23' AND 12' APART ON BOATS LESS THAN 25'.

THE MOST IMPORTANT STEP IN THE INSTALLATION OF THE PILING MOUNT LIFT IS THAT THE 4 PILING MOUNT BRACKETS ARE LEVEL, PLUMB, AND SQUARE. FOLLOW THE STEPS EXACTLY AND IT WILL SIMPLIFY THE PROCESS.



# FOLLOW THESE STEPS IN ORDER TO SAVE TIME



- 1) NAIL THE 2X6X14 SCAFFOLD BOARDS, ON THE SIDE OF THE PILING THAT THE PILING MOUNTS WILL BE MOUNTED TO, RUNNING PARALLEL WITH THE BOAT. MAKE SURE THAT THE BOARD IS LEVEL AT A HEIGHT OF 6' FROM THE TOP OF THE DOCK. (THE 6' MEASUREMENT CAN BE RAISED OR LOWERED TO GAIN OR REDUCE LIFTING HEIGHT.)
- 2) LOCATE THE 4 PILING MOUNTS AND ATTACH THE ANGLE BEARING BRACKETS TO EACH MOUNT WITH THE NUTS FACING OUT. ONE SET OF PILING MOUNTS HAVE A TOTAL OF 4 HOLES, THESE ARE THE MOUNTS THAT WILL HOLD THE STRAP BEARING ONLY. THE OTHER SET OF PILING MOUNTS HAVE A TOTAL OF 6 HOLES, THESE WILL HOLD THE STRAP BEARING AND THE GEARPLATE. THE PILING MOUNTS THAT HOLD THE GEARPLATE WILL BE LEFT AND RIGHT HAND CONFIGURED. THE 2 HOLES IN THE FLANGE OF THE CHANNEL DETERMINE THIS. USUALLY THE GEARBOXES FACE THE SHORE, THEREFORE, MAKE SURE THAT WHEN THE PILING MOUNTS ARE INSTALLED THE HOLES IN THE FLANGE FACE THE SHORE.
- 3) SET THE FIRST PILING MOUNT IN PLACE RESTING ON THE 2X6 SCAFFOLD BOARD. MAKE SURE THE PILING MOUNT FACE IS SQUARE WITH THE SCAFFOLD BOARD AND LEVEL. MARK HOLES. REMOVE PILING MOUNT AND REPEAT STEP AT EACH PILING.
- 4) SLIDE THE ½" x 9" BOLTS INTO THE HOLE ON THE FLANGE OF THE PILING MOUNT SO THAT THE THREADED END IS FACING THE SHORE. HAND TIGHTEN A NUT ON THE BOLT SO IT WILL NOT FALL OUT.
- 5) WITH THE 5/8" x 14" BOLTS, MOUNT THE PILING MOUNTS TO THE PILING. TIGHTEN THE BOLTS. IF THE PILING MOUNT IS NOT LEVEL WITH THE BOLTS, TIGHTEN THE LOOSE BOLTS AND INSERT A WOOD BLOCK BETWEEN THE PILING AND THE PILING MOUNT. SLIDE UP AND DOWN TO TOE THE PILING MOUNT IN AND OUT UNTIL LEVEL. REPEAT ON THE OTHER 3 PILINGS.
- 6) MOUNT THE 102 TO THE ANGLE BRACKETS. SLIDE 2" DRIVE PIPE INTO PLACE AND LEAVE AT LEAST 10" OUT FROM 102 ON GEARBOX END. CHECK THAT THE PIPE TURNS FREELY IN THE STRAP BEARINGS. IF IT BINDS, YOU CAN SHIM THE 102 AND ANGLE BRACKET WITH ½ WASHERS TO ALIGN.
- 7) INSTALL THE MOTORS ON THE GEARPLATES AND TIGHTEN BELT. SLIDE UNIT ON END OF DRIVE PIPE WITH THE MOTOR SIDE TOWARDS SHORE.
- 8) INSTALL THE TORQUE PIPE OVER THE BOLT BETWEEN THE PILING MOUNT AND THE GEARPLATE. DRILL A HOLE IN THE PIPE AND RUN THE CABLE. USE THE SHACKLE TO ATTACH THE SLINGS OR CRADLE BEAM. INSTALL THE GEARBOX, AND BOLT TO PIPE.
- 9) TURN ONE WINCH ON AT A TIME AND WIND THE CABLE IN THE PIPE. GREASE THE GEARBOXES AND APPLY GREASE INTO THE GREASE ZERKS. RUN ELECTRICAL WIRES SO THAT THEY DO NOT INTERFERE WITH THE LIFT. INSTALL THE COVERS. PULL THE BOAT INTO THE SLIP WITH THE REAR SLING OR CRADLE BEAM APPROXIMATELY 2 FEET FROM THE TRANSOM. RAISE THE BOAT.

# LUNMAR PILING MOUNT KITS PARTS LISTS

## 4200# Capacity

### Sling Kit Parts List:

- |  |  |
|--|--|
| ○(2) AMS 3000 (Motor/Gearplate/Switch/GFI)   | ○(2) White Motor Covers with Hardware      |
| ○(4) Piling Mounts (8" x 30" Channels)       | ○(8) 5/8" x 14" Bolts/Nuts/Locks/Flats     |
| ○(4) 102GS Short Strap Bearings              | ○(18) 1/2" x 1 1/2" Bolts/Nuts/Locks/Flats |
| ○(4) 4" Torque Pipes                         | ○(4) 1/2" x 10" Bolts/Nuts/Locks/Flats     |
| ○(4) 1/4" x 15' Stainless Cable with Shackle | ○(2) 4" x 14' Nylon Slings                 |
| ○(4) 3/16" Cable Clamp (Cable Stopper)       |  |

### Cradle Kit Parts List:

- |  |  |
|--|--|
| ○(2) AMS 3000 (Motor/Gearplate/Switch/GFI)   | ○(8) 3/8" x 4" Carr Bolts/Nuts/Locks/Flats |
| ○(4) Piling Mounts (8" x 30" Channels)       | ○(8) 5/8" x 14" Bolts/Nuts/Locks/Flats     |
| ○(4) 102GS Short Strap Bearings              | ○(18) 1/2" x 1 1/2" Bolts/Nuts/Locks/Flats |
| ○(4) 4" Torque Pipes                         | ○(8) 1/2" x 4 1/2" Bolts/Nuts/Locks/Flats  |
| ○(4) 1/4" x 15' Stainless Cable with Shackle | ○(4) 1/2" x 9" Bolts/Nuts/Locks/Flats      |
| ○(4) 3/16" Cable Clamp (Cable Stopper)       | ○(8) 834 Chock Brackets                    |
| ○(2) White Motor Covers with Hardware        | ○(2) 5" x 9' Cradle Beams                  |

---

---

## 5600# Capacity

### Sling Kit Parts List:

- |  |  |
|--|--|
| ○(2) AMS 4000 (Motor/Gearplate/Switch/GFI)   | ○(2) White Motor Covers with Hardware      |
| ○(4) Piling Mounts (8" x 30" Channels)       | ○(8) 5/8" x 14" Bolts/Nuts/Locks/Flats     |
| ○(4) 102GS Short Strap Bearings              | ○(18) 1/2" x 1 1/2" Bolts/Nuts/Locks/Flats |
| ○(4) 4" Torque Pipes                         | ○(4) 1/2" x 10" Bolts/Nuts/Locks/Flats     |
| ○(4) 1/4" x 15' Stainless Cable with Shackle | ○(2) 4" x 14' Nylon Slings                 |
| ○(4) 3/16" Cable Clamp (Cable Stopper)       |  |

### Cradle Kit Parts List:

- |  |  |
|--|--|
| ○(2) AMS 4000 (Motor/Gearplate/Switch/GFI)   | ○(8) 3/8" x 4" Carr Bolts/Nuts/Locks/Flats |
| ○(4) Piling Mounts (8" x 30" Channels)       | ○(8) 5/8" x 14" Bolts/Nuts/Locks/Flats     |
| ○(4) 102GS Short Strap Bearings              | ○(18) 1/2" x 1 1/2" Bolts/Nuts/Locks/Flats |
| ○(4) 4" Torque Pipes                         | ○(8) 1/2" x 4 1/2" Bolts/Nuts/Locks/Flats  |
| ○(4) 1/4" x 15' Stainless Cable with Shackle | ○(4) 1/2" x 9" Bolts/Nuts/Locks/Flats      |
| ○(4) 3/16" Cable Clamp (Cable Stopper)       | ○(8) 834 Chock Brackets                    |
| ○(2) White Motor Covers with Hardware        | ○(2) 5" x 9' Cradle Beams                  |

---

---

## 7000# Capacity

### Cradle Kit Parts List:

- |   |  |
|---|--|
| ○(2) AMS 4000 (Motor/Gearplate/Switch/GFI)    | ○(8) 3/8" x 4" Carr Bolts/Nuts/Locks/Flats |
| ○(4) Piling Mounts (8" x 30" Channels)        | ○(8) 5/8" x 14" Bolts/Nuts/Locks/Flats     |
| ○(4) 102GS Short Strap Bearings               | ○(18) 1/2" x 1 1/2" Bolts/Nuts/Locks/Flats |
| ○(4) 4" Torque Pipes                          | ○(8) 1/2" x 5 1/2" Bolts/Nuts/Locks/Flats  |
| ○(4) 5/16" x 15' Stainless Cable with Shackle | ○(4) 1/2" x 9" Bolts/Nuts/Locks/Flats      |
| ○(4) 3/16" Cable Clamp (Cable Stopper)        | ○(8) 834 Chock Brackets                    |
| ○(2) White Motor Covers with Hardware         | ○(2) 6" x 10' Cradle Beams                 |

---

---

## Additional Parts Required

### For Sling Kits:

- (2) 2" Schedule 40 Galvanized Pipe (15')

### For Cradle Kits:

- (2) 2" Schedule 40 Galvanized Pipe (15')
- (2) Bunk Boards (2x10x14 Rough Cut Treated)

---

---

➤ **CHECK BOXES FOR ALL PARTS BEFORE FREIGHT COMPANY LEAVES!**

➤ **THIS KIT IS A BOAT LIFT AND IS INTENDED TO BE USED AS ONLY A BOAT LIFT.  
DO NOT USE THIS LIFT TO PICK UP HUMANS.**

➤ **DO NOT WORK UNDER A HANGING BOAT!**

➤ **ALL ELECTRICAL MODIFICATIONS MUST BE DONE BY A CERTIFIED ELECTRICIAN!**

---

---

**Tools Required for Installation:**

- |                       |                           |
|-----------------------|---------------------------|
| ▪ 1/2" Drill          | ▪ Hammer                  |
| ▪ 3/4" Wrench         | ▪ 1/2" Wrench             |
| ▪ Adjustable Wrench   | ▪ Circular Saw            |
| ▪ 7/16" Wrench        | ▪ 2 x 6 x 16 Scaffolding  |
| ▪ 5/8" Wood Auger Bit | ▪ 2 x 12 x 14 Scaffolding |
| ▪ 2" x 6" x 8" Blocks |                           |
- 
- 

**TROUBLESHOOTING:**

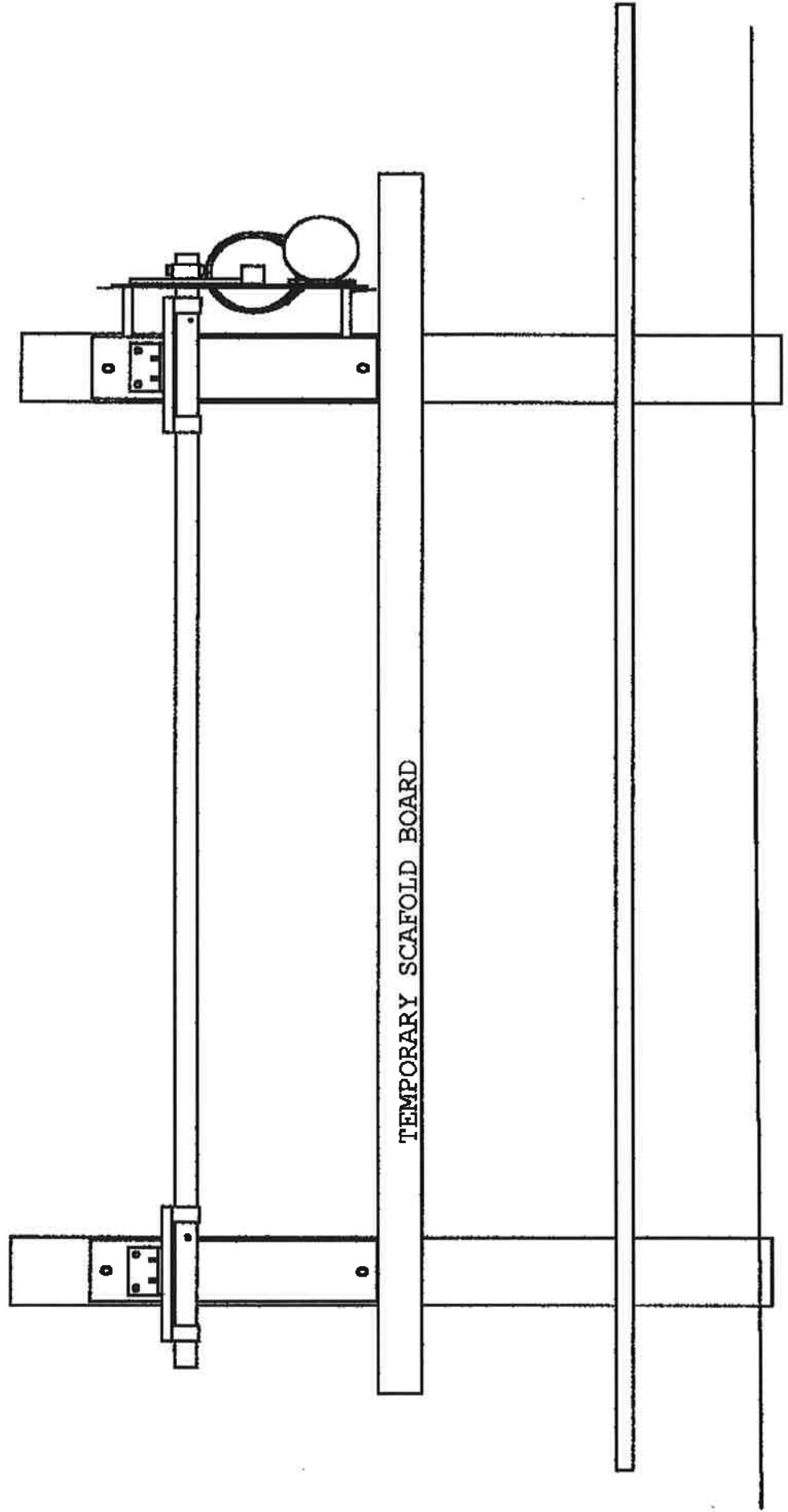
***Lift will Not Pick up Boat***

- 1) Boat weighs more than lift capacity
- 2) Low voltage
- 3) Belt slipping
- 4) Gearplate or pipe binding due to improper alignment

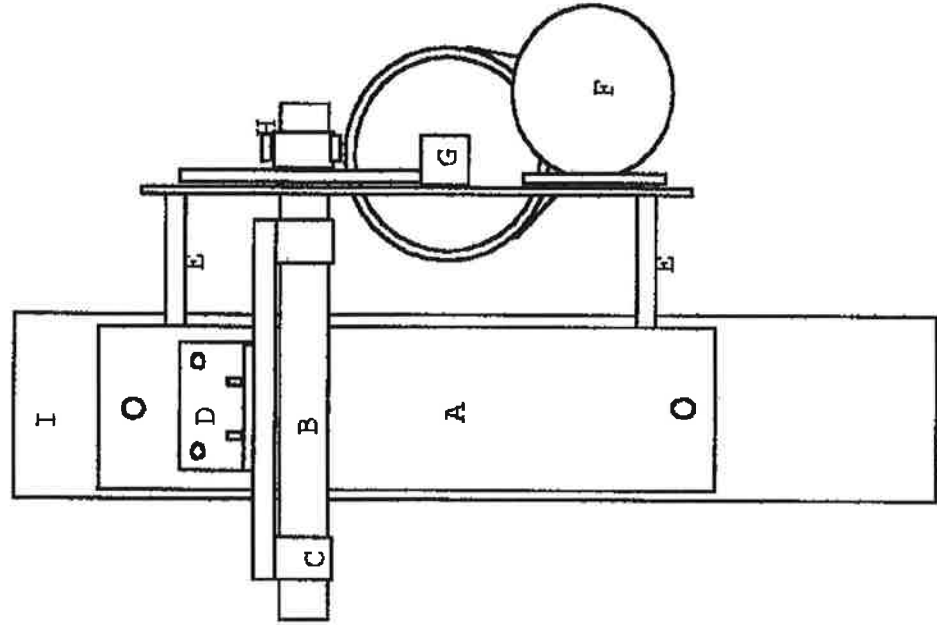
***Lift Making Excessive Noise***

- 1) Needs to be greased
- 2) Pipe or gearbox out of alignment
- 3) Cable rubbing against 102 assemblies

**LUNMAR 4200#, 5600#, 7000# PILING MOUNT**

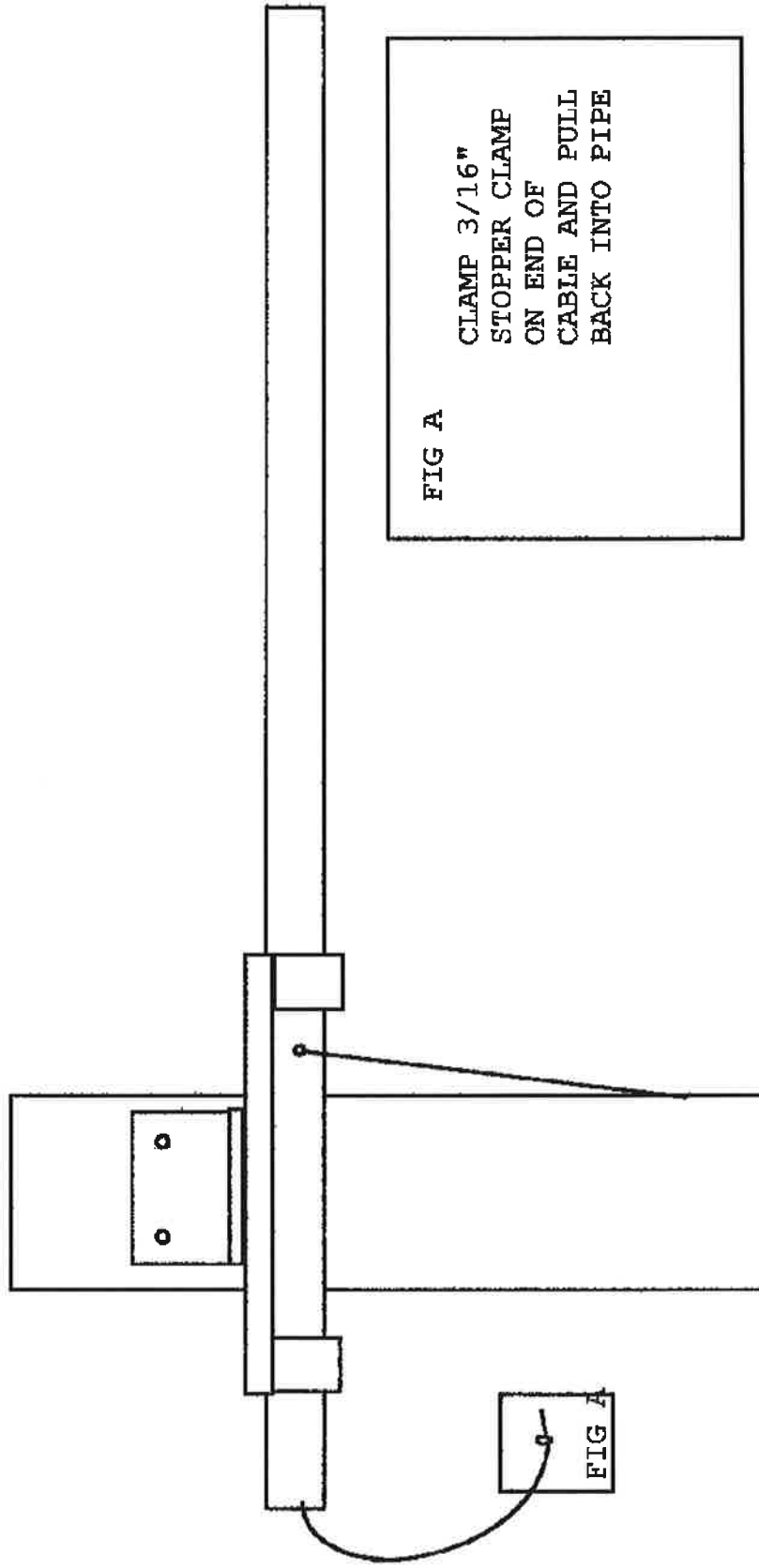


# LUNMAR 4200#, 5600#, 7000# PILING MOUNT

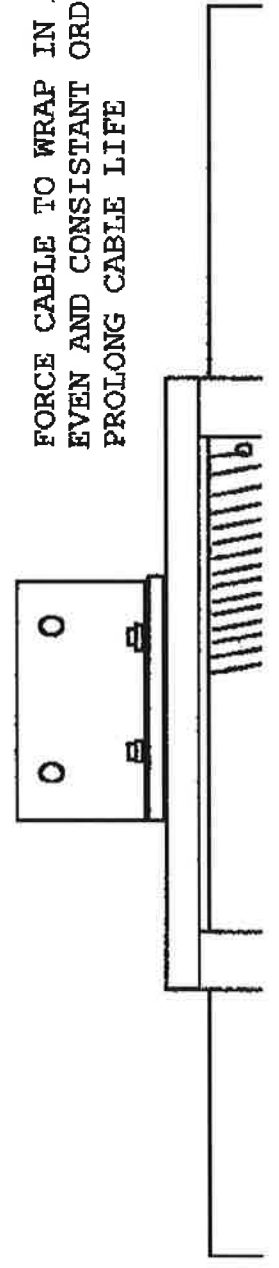


- A-----PILING MOUNT
- B-----DRIVE PIPE
- C-----102 STRAP BEARING
- D-----BEARING BRACKET
- E-----TORQUE PIPE WITH  
BOLT (THREADED END  
IS ON THE GEARBOX  
END
- F-----MOTOR
- G-----GEARPLATE
- H-----DRIVE BOLT  
(ATTACHES DRIVE  
PIPE TO GEARBOX)
- I-----PILING

# LUNMAR 4200#, 5600#, 7000# PILING MOUNT

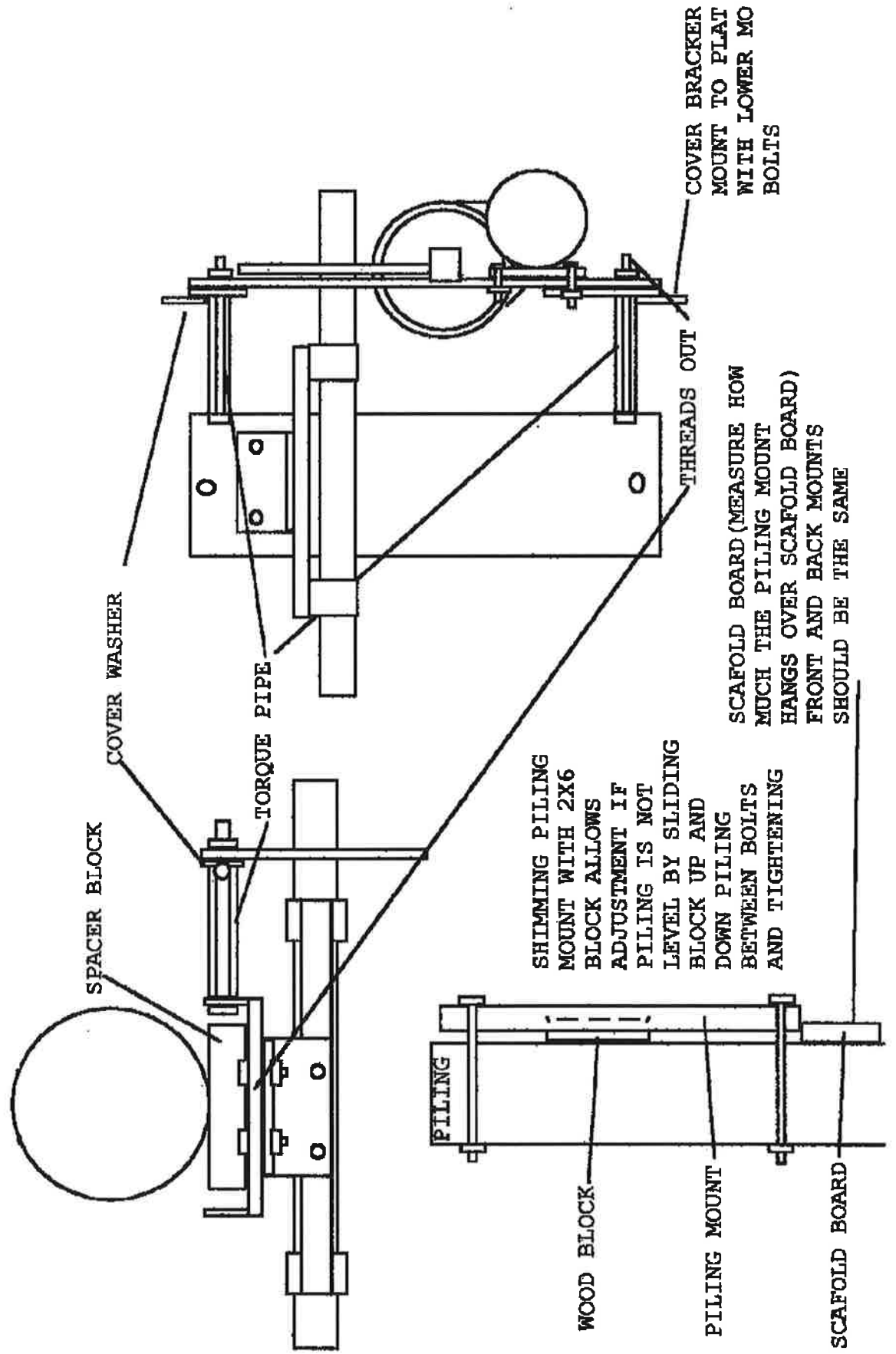


FORCE CABLE TO WRAP IN AN  
EVEN AND CONSISTANT ORDER TO  
PROLONG CABLE LIFE

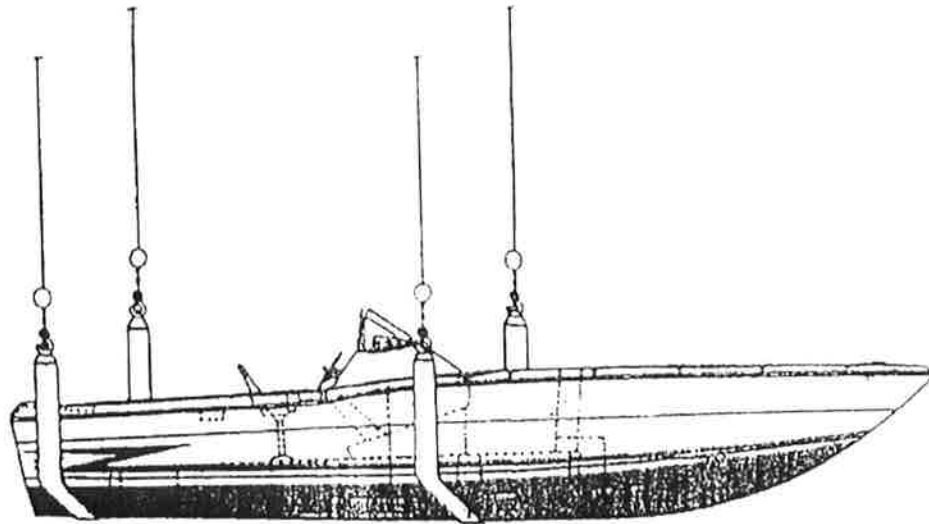




# LUNMAR 4200#, 5600#, 7000# PILING MOUNT



NO. I-502



FOR OPTIMUM PERFORMANCE :

EQUAL WEIGHT DISTRIBUTION  
IS REQUIRED ON ALL 4 CABLES

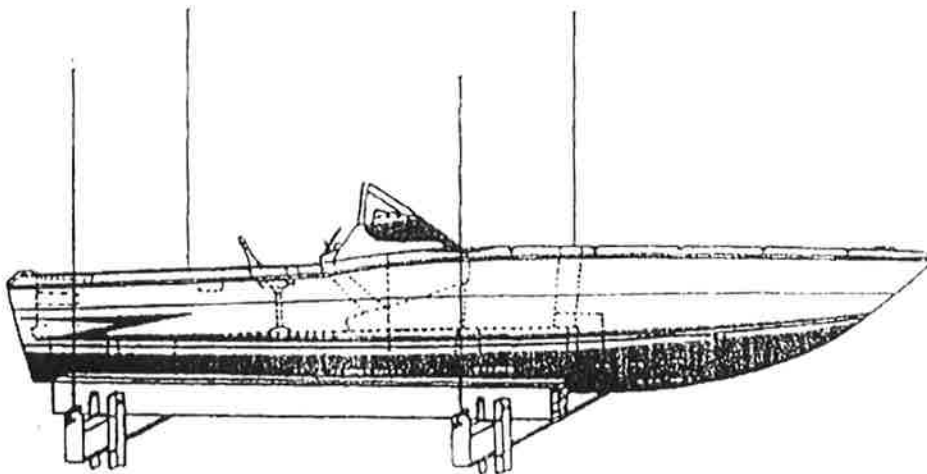
4-POINT SLING HOIST

TO OBTAIN EQUAL WEIGHT DISTRIBUTION:

1. USE BALANCE POINT OF BOAT.
2. DO NOT USE CENTER OF BOAT LENGTH.

INSTRUCTIONS FOR  
WEIGHT DISTRIBUTION  
SCALE NONE  
NO. I-502

NO. I-503



FOR OPTIMUM PERFORMANCE :

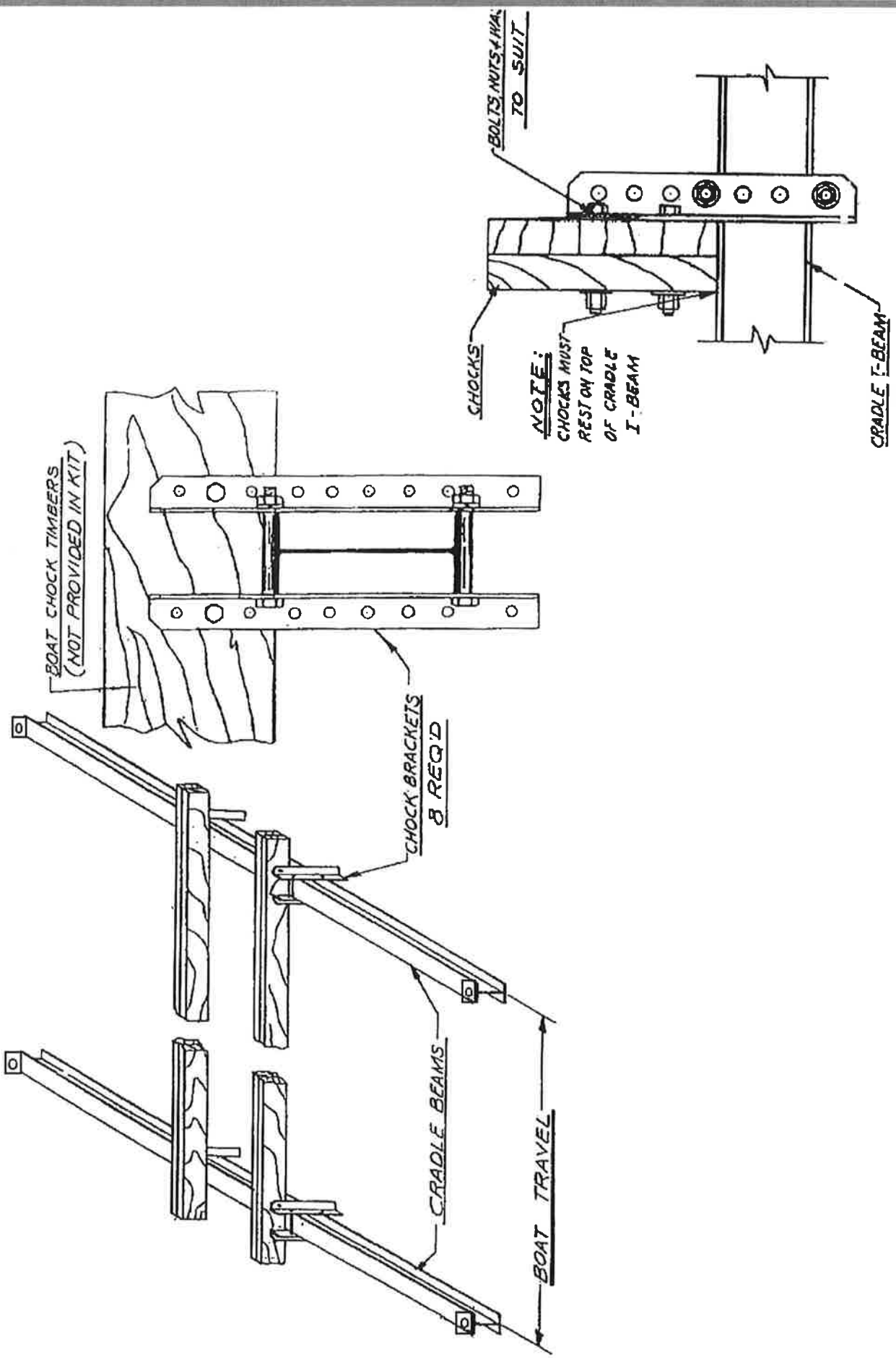
EQUAL WEIGHT DISTRIBUTION  
IS REQUIRED ON ALL 4 CABLES.

4-POINT CRADLE HOIST

TO OBTAIN EQUAL WEIGHT DISTRIBUTION:

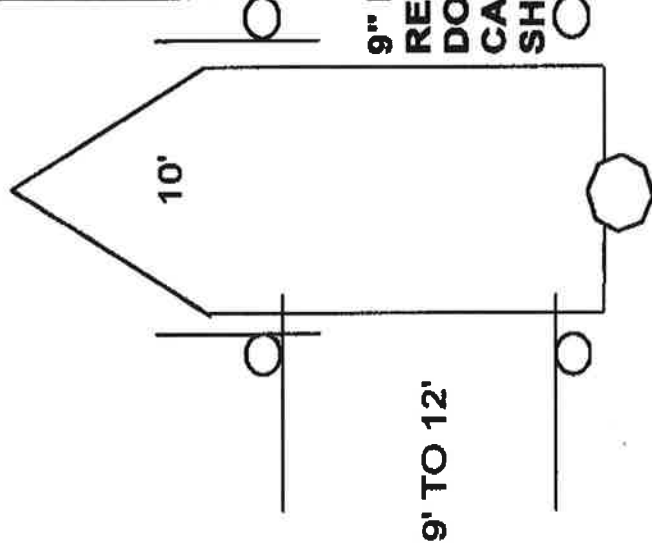
1. USE BALANCE POINT OF BOAT.
2. DO NOT USE CENTER OF BOAT LENGTH

INSTRUCTIONS FOR  
WEIGHT DISTRIBUTION  
SCALE NONE  
NO. I-503



# PILING PLACEMENT FOR LUNMAR PILING MOUNT LIFTS

4200 & 5600 WITH 9'  
CRADLE BEAMS



5600 & 7000 WITH 10'  
CRADLE BEAMS

