



LUNMAR INSTALLATION GUIDE

3000# Sling Kit and Cradle Kit

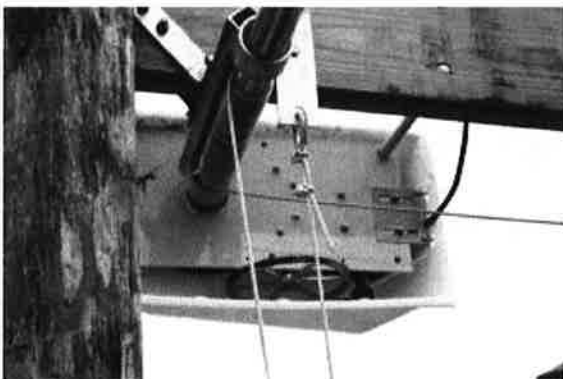
4000# Sling Kit and Cradle Kit

6000# Sling Kit and Cradle Kit

READ ALL INSTRUCTIONS BEFORE STARTING

THE LUNMAR 3000, 4000, AND 6000 BASIC INSTALLATION ARE THE SAME. THE 3000 AND 4000 WORK BASED ON A SINGLE LINE PULL AND THE 6000 WORKS BASED ON A DOUBLE LINE PULL. THE OVERHEAD INSTALLATION OF THESE KITS ARE THE SAME EXCEPT ON THE 3000 AND 4000 THE CABLE CONNECTS DIRECTLY TO THE SLING OR CRADLE BEAM AND ON THE 6000 IT PASSES THROUGH A PULLEY AND THEN BACK UP TO DEADMAN OFF ON AN OVERHEAD BEAM. LUNMAR KITS ARE DESIGNED FOR A 2" SCHEDULE 40 GALVANISED PIPE TO RUN OFF TO ONE SIDE AND PARALLEL TO THE BOAT WHICH IS SUSPENDED FROM THE OVERHEAD BEAMS WHICH RUN PERPENDICULAR TO THE BOAT BY STRAP BEARINGS AND BEARING BRACKETS. THE BEAMS WHICH THE KIT ATTACH TO ARE USUALLY 10' TO 12' APART DEPENDING ON LENGTH OF BOAT AND THE DISTANCE BETWEEN THE STRAP BEARING AND THE 560 PULLEYS ARE 10' IF THE BOAT IS 8' WIDE.

- THE STANDARD LUNMAR KIT REQUIRES THREE WOOD BEAMS RUNNING PERPENDICULAR TO THE BOAT.
- PULL THE BOAT INTO THE BOAT SLIP.
- THE AFT WOOD BEAM SHOULD BE LOCATED 1' TO 2' FROM TRANSOM.
- THE NEXT BEAM SHOULD BE LOCATED ABOVE THE BOAT WHERE YOU WOULD WANT THE FRONT SLING TO HIT THE BOAT. USUALLY 10' TO 12'.



- THE THIRD BEAM IS FOR MOUNTING THE GEARBOX AND CAN BE LOCATED ANYWHERE. WE RECOMMEND IT NO FURTHER THAN 8' TO 10' AHEAD OF THE SECOND BEAM SINCE A STANDARD 2" GALVANISED PIPE IS 21' LONG.
- THE THIRD BEAM CAN BE OMITTED IF YOU PURCHASED THE OPTIONAL TORQUE PIPE KIT (SHOWN) WHICH ALLOWS YOU TO MOUNT THE GEARBOX ON ONE OF THE SUPPORT BEAMS

LUNMAR WOOD MOUNT KITS PARTS LIST

3000# Capacity

Sling Kit Parts List:

- (1) AMS 3000 (Motor/Gearplate/Switch/GFI)
- (2) 102L Strap Bearings
- (4) 108 Bearing Brackets
- (80) Feet ¼" Galvanized Cable
- (4) Thimbles
- (2) 560L Pulleys
- (4) ½" x 1½" Bolts/Nuts/Locks/Flats
- (8) ¼" Cable Clamps
- (2) 4" x 14' Nylon Slings

Cradle Kit Parts List:

- (1) AMS 3000 (Motor/Gearplate/Switch/GFI)
- (2) 102L Strap Bearings
- (4) 108 Bearing Brackets
- (80) Feet ¼" Galvanized Cable
- (2) 560L Pulleys
- (4) ½" x 1½" Bolts/Nuts/Locks/Flats
- (4) Thimbles
- (8) ¼" Cable Clamps
- (2) 5" x 9' Cradle Beams
- (4) Right Hand Chock Brackets
- (4) Left Hand Chock Brackets
- (8) ½" x 4½" Bolts/Nuts/Locks/Flats
- (8) ½" x 4" Bolts/Nuts/Locks/Flats

4000# Capacity

Sling Kit Parts List:

- (1) AMS 4000 (Motor/Gearplate/Switch/GFI)
- (2) 102L Strap Bearings
- (4) 108 Bearing Brackets
- (80) Feet ¼" Galvanized Cable
- (4) Thimbles
- (2) 560L Pulleys
- (4) ½" x 1½" Bolts/Nuts/Locks/Flats
- (8) ¼" Cable Clamps
- (2) 4" x 14' Nylon Slings

Cradle Kit Parts List:

- (1) AMS 4000 (Motor/Gearplate/Switch/GFI)
- (2) 102L Strap Bearings
- (4) 108 Bearing Brackets
- (80) Feet ¼" Galvanized Cable
- (2) 560L Pulleys
- (4) ½" x 1½" Bolts/Nuts/Locks/Flats
- (4) Thimbles
- (8) ¼" Cable Clamps
- (2) 5" x 9' Cradle Beams
- (4) Right Hand Chock Brackets
- (4) Left Hand Chock Brackets
- (8) ½" x 4½" Bolts/Nuts/Locks/Flats
- (8) ½" x 4" Bolts/Nuts/Locks/Flats

6000# Capacity

Sling Kit Parts List:

- (1) AMS 3000 (Motor/Gearplate/Switch/GFI)
- (2) 102L Strap Bearings
- (4) 108 Bearing Brackets
- (120) Feet ¼" Galvanized Cable
- (4) 560 Pulleys
- (2) 560L Pulleys
- (4) ½" x 1½" Bolts/Nuts/Locks/Flats
- (8) ¼" Cable Clamps
- (2) 4" x 14' Nylon Slings

Cradle Kit Parts List:

- (1) AMS 3000 (Motor/Gearplate/Switch/GFI)
- (2) 102L Strap Bearings
- (4) 108 Bearing Brackets
- (140) Feet ¼" Galvanized Cable
- (4) 560 Pulleys
- (2) 560L Pulleys
- (4) ½" x 1½" Bolts/Nuts/Locks/Flats
- (8) ¼" Cable Clamps
- (2) 5" x 9' Cradle Beams
- (4) Right Hand Chock Brackets
- (4) Left Hand Chock Brackets
- (8) ½" x 4½" Bolts/Nuts/Locks/Flats
- (8) ½" x 4" Bolts/Nuts/Locks/Flats

Additional Parts Required

For Sling Kits:

- (1) 2" Schedule 40 Galvanized Pipe (21')
- (14) ½" Bolts to connect kit to boathouse

For Cradle Kits:

- (1) 2" Schedule 40 Galvanized Pipe (21')
- (2) Bunk Boards (2x10x14 Rough Cut Treated)
- (14) ½" Bolts to connect kit to boathouse

Optional Parts for Boat Lifts Available:

- White Gearbox Cover
- Weighted Slings
- Cable Weights
- Remotes
- Stainless Steel Cable
- 6", 8", and 10" Slings

➤CHECK BOXES FOR ALL PARTS BEFORE FREIGHT COMPANY LEAVES!

➤THIS KIT IS A BOAT LIFT AND IS INTENDED TO BE USED AS ONLY A BOAT LIFT.
DO NOT USE THIS LIFT TO PICK UP HUMANS.

➤DO NOT WORK UNDER A HANGING BOAT!

➤ALL ELECTRICAL MODIFICATIONS MUST BE DONE BY A CERTIFIED ELECTRICIAN!

Tools Required for Installation:

- Electric Drill
 - 1/2" Wood Bits
 - 1/2" Steel Bits
 - 5/16" Steel Bits
 - Screw Drivers
 - Hammer
 - Wrenches
 - Level
 - Rope
 - Pencil
-
-

TROUBLESHOOTING:

Lift will Not Pick up Boat

- 1)Boat weighs more than lift capacity
- 2)Low voltage
- 3)Belt slipping
- 4)Gearplate or pipe binding due to improper alignment

Lift Making Excessive Noise

- 1)Needs to be greased
- 2)Pipe or gearbox out of alignment
- 3)Cable rubbing against 102 assemblies

Cable Backlashing

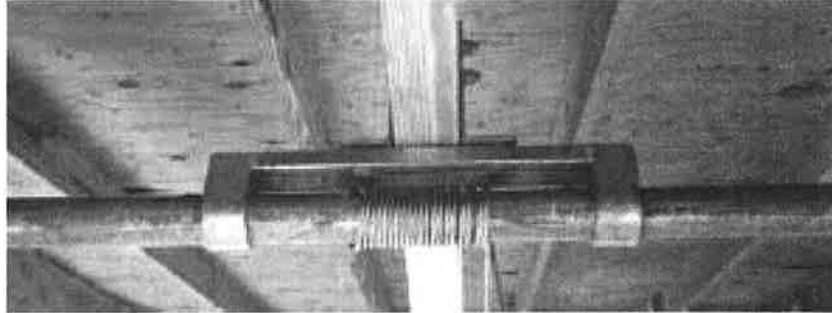
- 1)Add cable weights to pulleys
- 2)Upgrade to weighted slings.
- 3)Cables rubbing against 102 assemblies

FOLLOW THESE STEPS IN ORDER TO SAVE TIME!

1) Connect the 102L Strap Bearing to the 108 Bearing Bracket using the supplied $\frac{1}{2}$ " x $1\frac{1}{2}$ " Bolts.

2) Slide the two 102 assemblies onto the 2" pipe.

3) Tie a rope onto each end of the pipe and hoist into position.

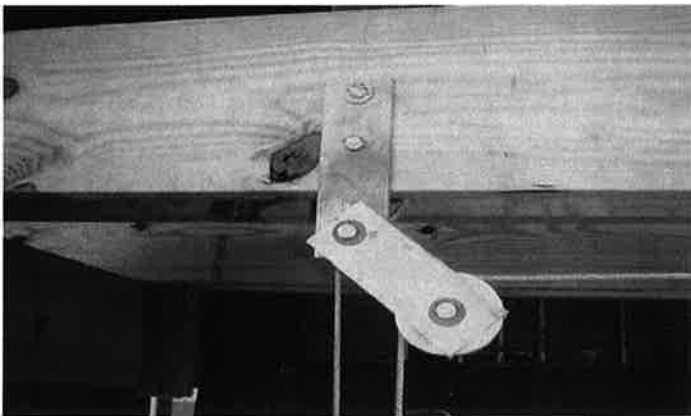


4) The pipe should be running parallel with

the boat and over to one side. The pipe should be as close to the edge of the dock as possible to make it easier to get in and out of the boat.

5) With the pipe hanging by the ropes from the beams line up 102 assemblies so that they are level and square. Mark Holes.

6) Drill holes and bolt 102 assemblies to beams making sure the pipe is level and that the pipe will turn freely in the 102 Strap Bearings.



7) Measure 10' from the pipe across the beam and mount 560L Pulley. The pulley should hang down with the capability of swinging about 30 degrees.

8) Drill $\frac{5}{16}$ " hole through the pipe in the center of each of

the 102 assemblies.

9) Install the Motor onto the Gearplate and tighten the Belt.

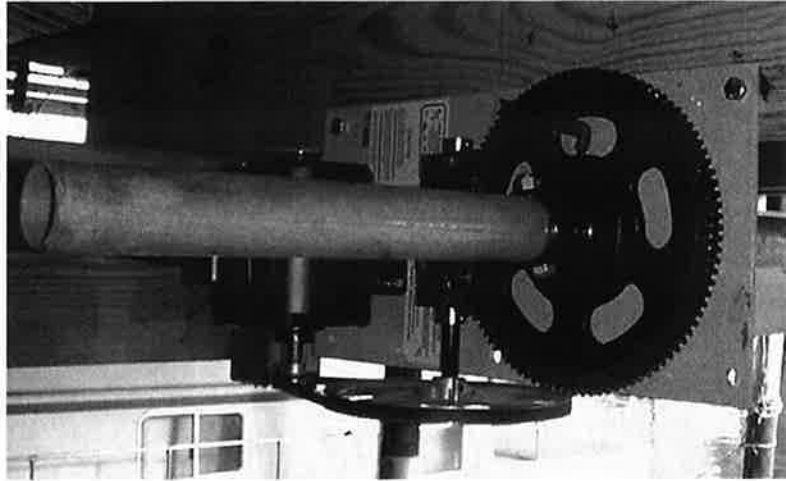
10) Hang the Gearbox on the pipe and bolt to the beam.

11) Mark hole on Gearplate and drill $\frac{1}{2}$ " hole through the pipe and bolt up.

12) Cut the Cable in half (Cable may already be cut in half -(2) 40' cables for the 3000# and 4000# Kits, and (2) 60' pieces for the 6000# Kit) and run through the pipe and over to the pulley attaching loose ends to Slings or Cradle Beam with the provided Clamps. Go to Step 15.

- 13) Run the Cable through the pipe over to the 560L Pulley down to the 560 Pulley and deadman off on the overhead beam. The 3000# and 4000# Kits do not use the lower pulleys, so attach the Cable directly to the Sling or the Cradle Beam.

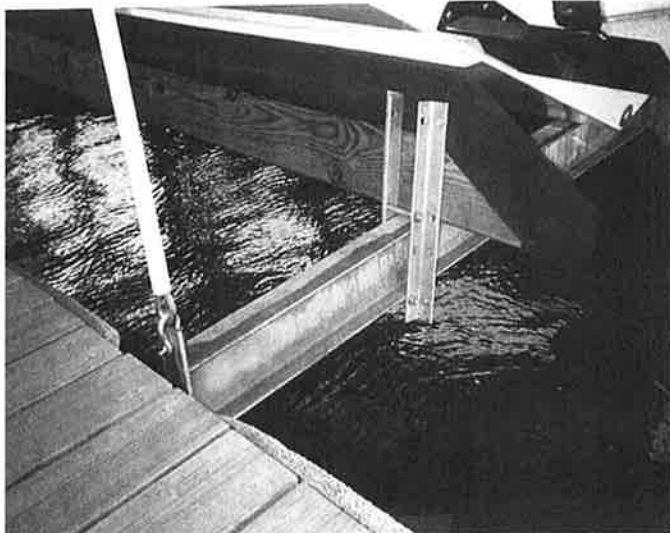
- 14) Attach the Pulley to the Sling or Cradle Beam by removing the Bolt on the Pulley on the 6000# Kit. Disregard this step for the 3000# and 4000# Kits.



- 15) You can level the Sling or Cradle Beam by pulling down on the Cable.
16) Once level, turn on Winch. Once two wraps are made on to the pipe, the Cable is locked into position and will not move.
17) Make sure the Cables wrap opposing each other without stacking. (Stacking Cables will reduce the life of the Cables)
18) Grease the Gearbox at the three zerts and spread a liberal amount of grease on the flywheel. Apply a small amount of grease on the 102's to eliminate squealing.
If you are Installing a Sling Kit You are Finished.

Final Cradle Installation

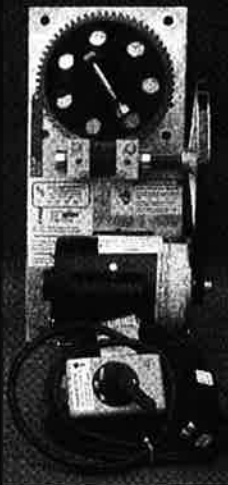
- 19) Assemble Chock Brackets as shown in Diagram and connect to Cradle Beam. The bunk boards should be angled to conform to the bottom of the boat. On an 8 1/2' boat, the aft Chock Brackets should be about 60" apart and the forward Chock Brackets should be about 56" apart. On flat bottom



boats, stand the boards so that they are 90 degrees to the bunk boards.

- 20) If you purchased the optional Cable Guide Posts, connect between the Cradle Beam and the 560 Pulleys.

SPECIFICATIONS AND FEATURES



Capacity:
2000 lbs

Motor:
3/4 H.P. 120 V
ODP

Wiring:
14 Gauge
weatherproof

Plate:
1/4" Steel
9.5" x 19.5"
galvanized

Gear:
8" Cast 60 Tooth
Precision
machined

Hoist Speed:
4.0 Vertical
feet per min.

Shipping Wgt:
48 Pounds
UPS Shipping



Capacity:
3000 lbs &
4000 lbs

Motor:
3/4 H.P.
120/240 V
ODP, TENV,
TEFC, & 12 V DC

Wiring:
14 Gauge
weatherproof

Plate:
1/4" Steel
12" x 24" Baked
on powder coat
Available option -
stainless &
galvanized

Gear:
12" Cast
Precision
machined

Hoist Speed:
2.5 Vertical
feet per min.
Faster speeds
available

Shipping Wgt:
78 Pounds
UPS Shipping



Capacity:
6500 lbs

Motor:
1 H.P.
120/240 V
TENV, TEFC

Wiring:
14 Gauge
weatherproof

Plate:
1/4" Steel
12" x 24" Baked
on powder coat
Available option -
stainless &
galvanized

Gear:
12" Heavy duty
cast - Precision
machined

Hoist Speed:
3.0 Vertical
feet per min.
Faster speeds
available

Shipping Wgt:
100 Pounds
UPS Shipping

Pulleys:
Steel pulleys



Capacity:
8500 lbs
Std with twin belt

Motor:
1.5 H.P.
120/240 V
TEFC

Wiring:
12 Gauge
weatherproof

Plate:
1/4" Steel
12" x 24" Baked
on powder coat
Available option -
stainless &
galvanized

Gear:
12" Heavy duty
cast - Precision
machined

Hoist Speed:
2.8 Vertical
feet per min.
Faster speeds
available

Shipping Wgt:
110 Pounds
UPS Shipping

Pulleys:
Steel dual pulleys

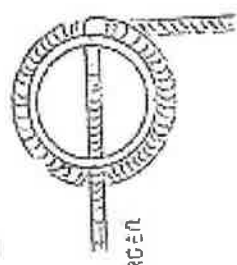
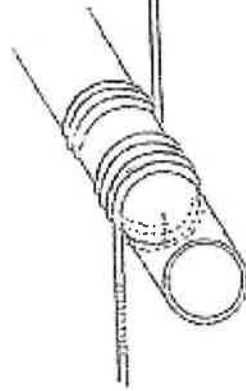
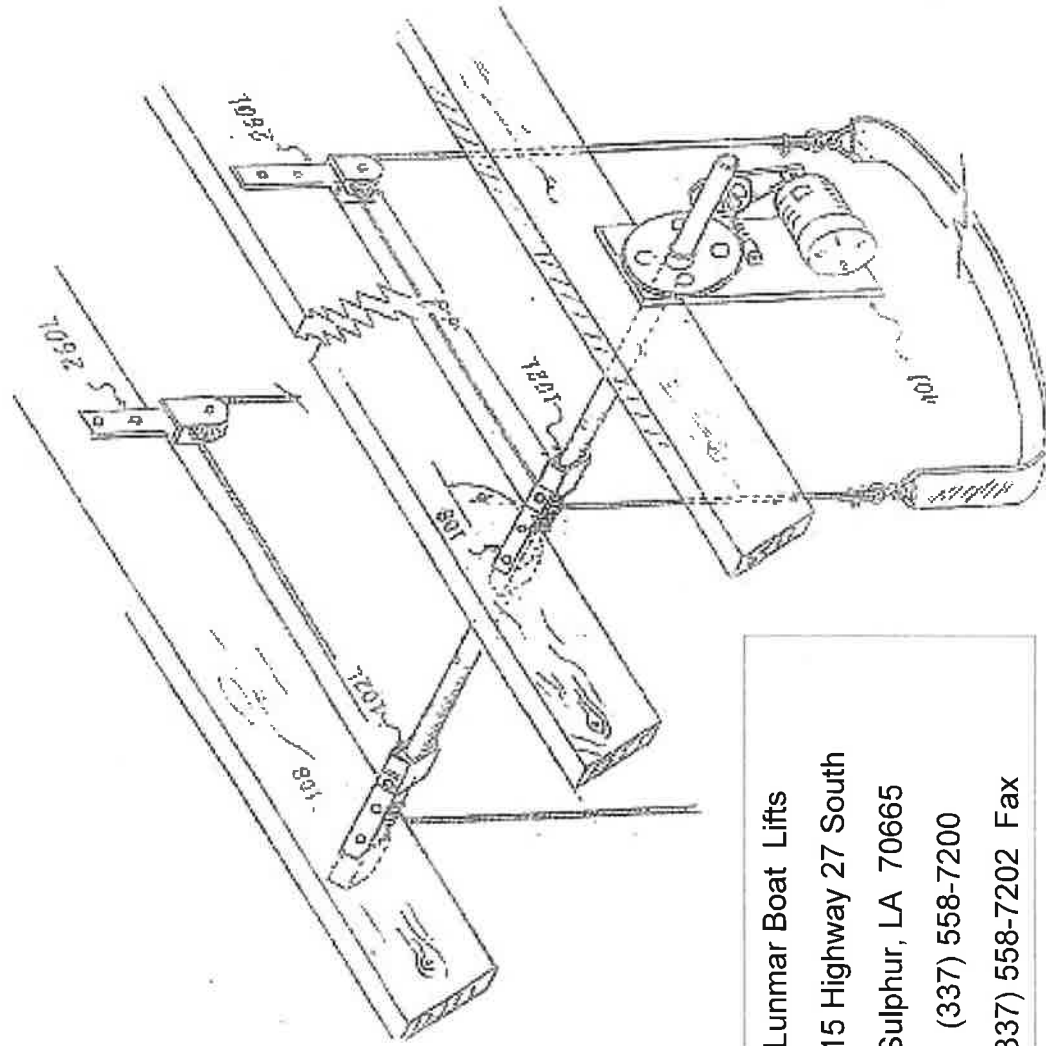


**Stainless Steel
Chain &
Sprocket:**

Available:
On all models

Hoist Speed:
Same as listed
with belt & pulleys

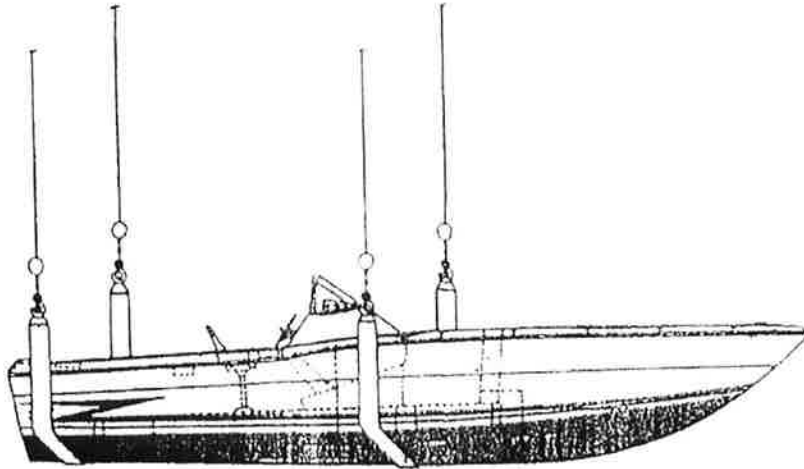
Lunmar Boat Lifts
3715 Highway 27 S.
Sulphur, LA 70665
(337) 558-7200
(337) 558-7202 Fax



CABLE HOLE 3/4" LARGER
THAN CABLE DIA.

Lunmar Boat Lifts
 3715 Highway 27 South
 Sulphur, LA 70665
 (337) 558-7200
 (337) 558-7202 Fax

NO. I-502



FOR OPTIMUM PERFORMANCE:

EQUAL WEIGHT DISTRIBUTION
IS REQUIRED ON ALL 4 CABLES

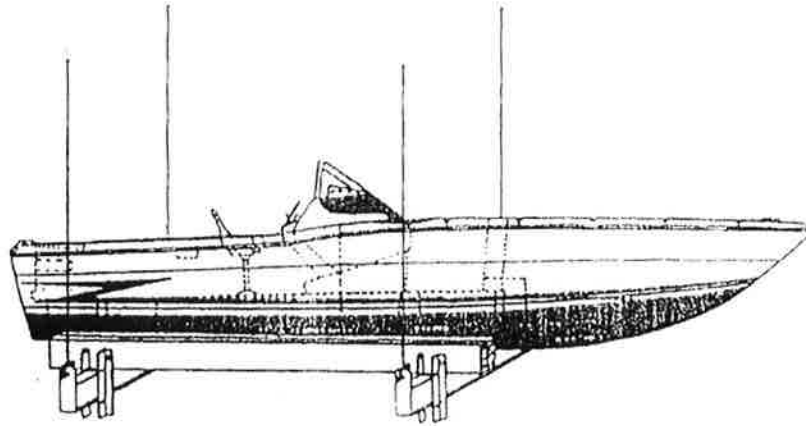
4-POINT SLING HOIST

TO OBTAIN EQUAL WEIGHT DISTRIBUTION:

1. USE BALANCE POINT OF BOAT.
2. DO NOT USE CENTER OF BOAT LENGTH.

INSTRUCTIONS FOR WEIGHT DISTRIBUTION
SCALE NONE
NO. I-502

NO. I-503



FOR OPTIMUM PERFORMANCE

EQUAL WEIGHT DISTRIBUTION
IS REQUIRED ON ALL 4 CABLES.

4-POINT CRADLE HOIST

TO OBTAIN EQUAL WEIGHT DISTRIBUTION:

1. USE BALANCE POINT OF BOAT.
2. DO NOT USE CENTER OF BOAT LENGTH

INSTRUCTIONS FOR WEIGHT DISTRIBUTION
SCALE NONE
NO. I-503

Lunmar Boat Lifts

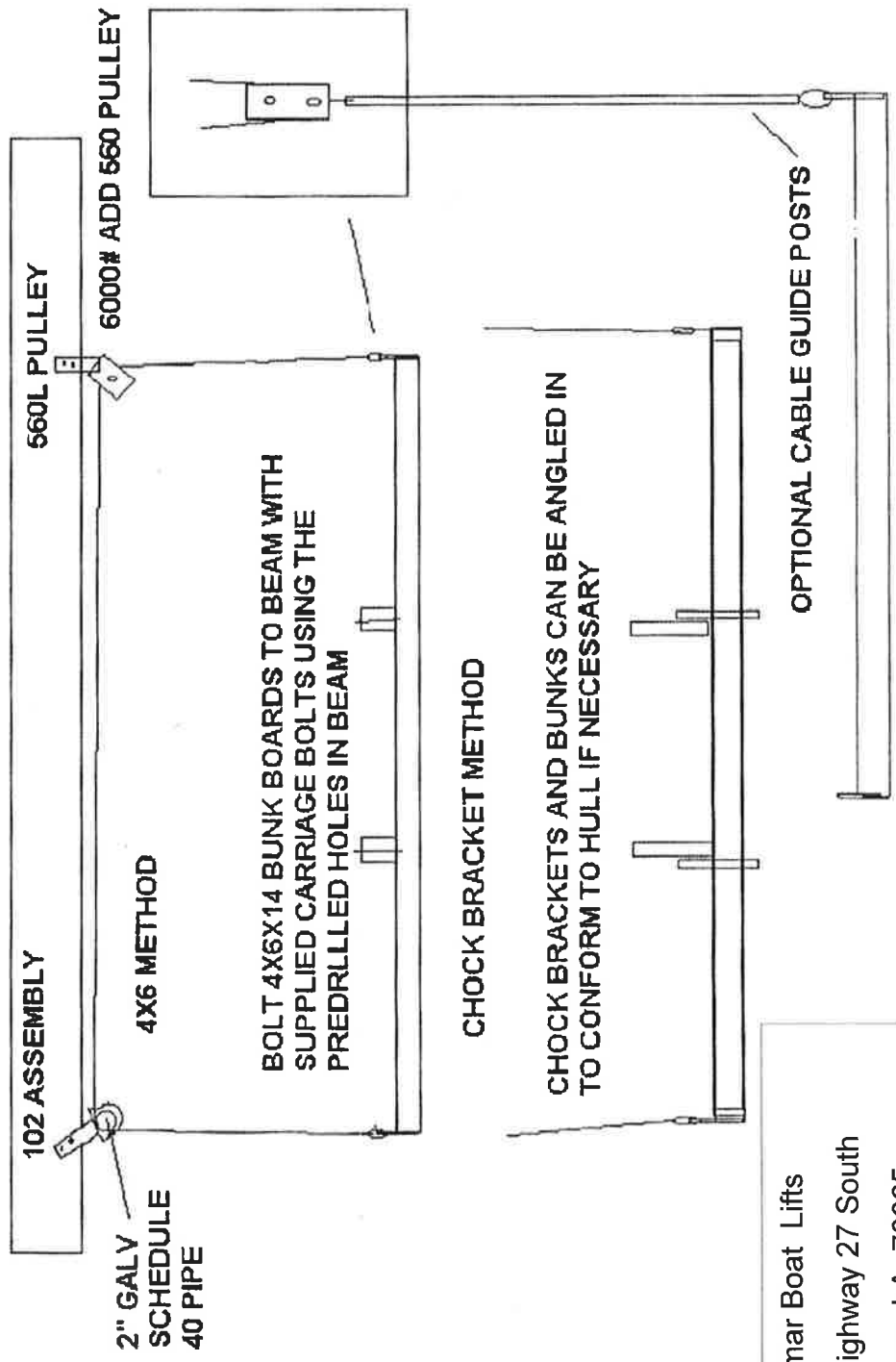
3715 Highway 27 South

Sulphur, LA 70665

(337) 558-7200

(337) 558-7202 Fax

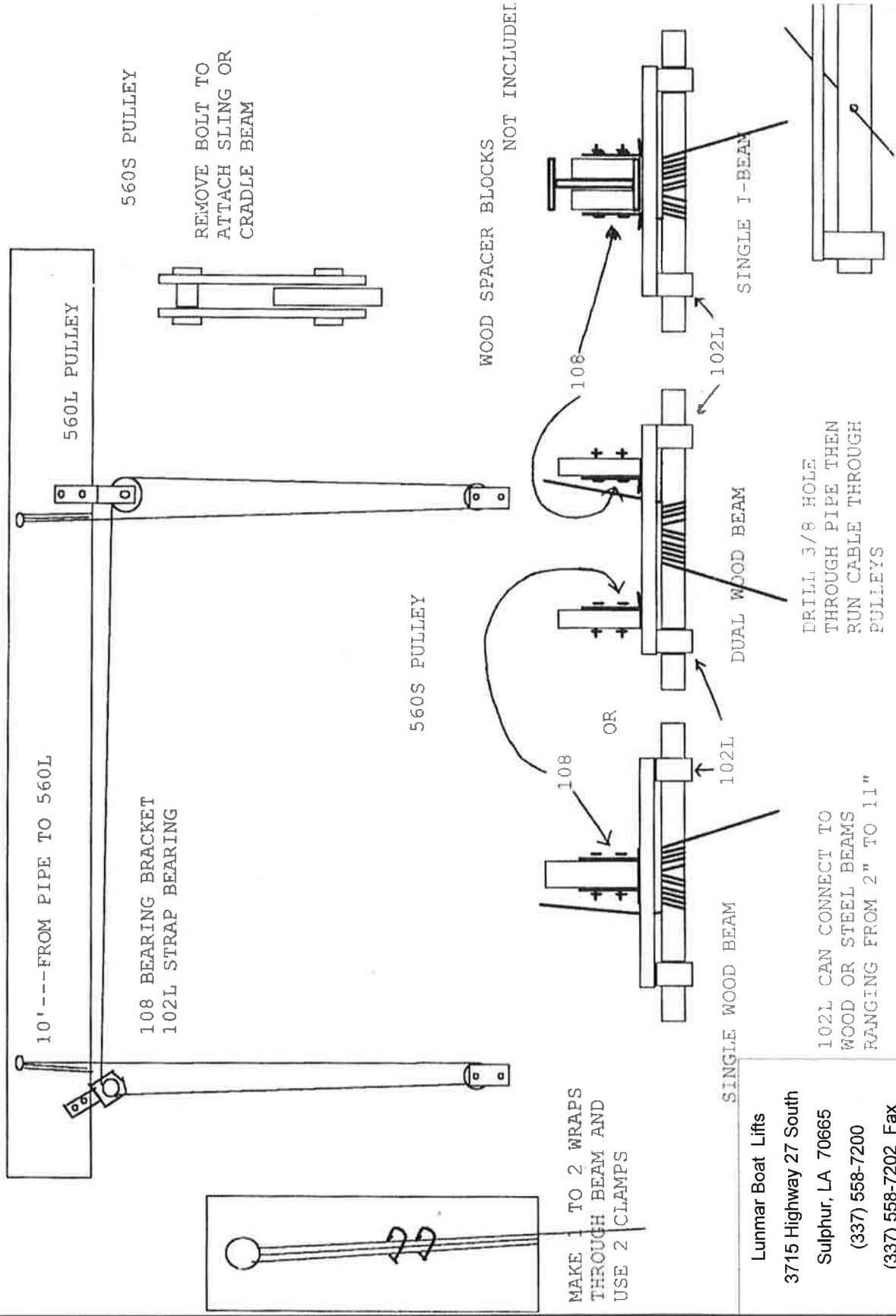
**LUNMAR BOAT LIFTS
3000/6000# CRADLE KITS**



Lunmar Boat Lifts
3715 Highway 27 South
Sulphur, LA 70665
(337) 558-7200
(337) 558-7202 Fax

DRILL HOLE AND RUN
CABLE THROUGH BEAM
FOR DEADMAN

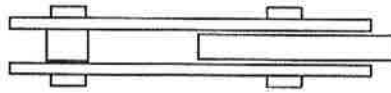
LUNMAR 6000SL AND CL



Lunmar Boat Lifts
3715 Highway 27 South
Sulphur, LA 70665
(337) 558-7200
(337) 558-7202 Fax

Lunmar Boat Lifts
 3715 Highway 27 South
 Sulphur, LA 70665
 (337) 558-7200
 (337) 558-7202 Fax

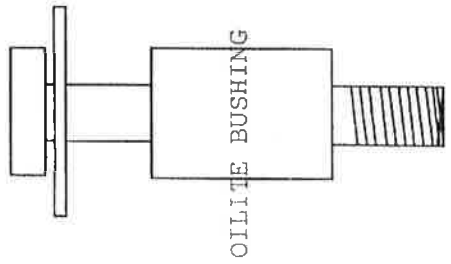
560S PULLEY



REMOVE BOLT AND
 OILITE BUSHING TO
 ATTACH TO SLING OR
 CRADLE

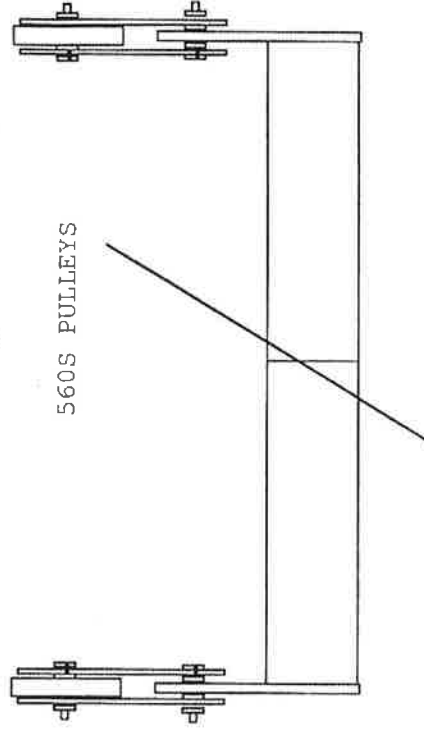
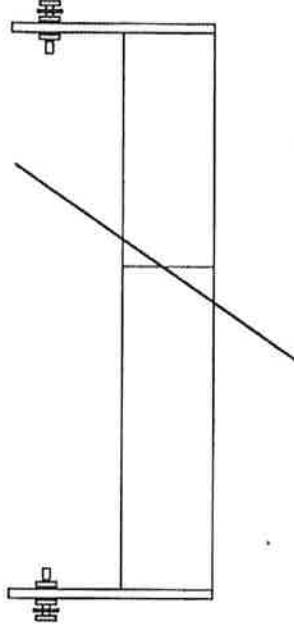
BUSHING MUST BE
 PRESSED INTO 7/8 HOPES
 ON PAD EYES OF CRADLE
 BEAMS.

1) INSERT BOLT/WASHER
 INTO OILITE BUSHING AS
 SHOWN LEFT



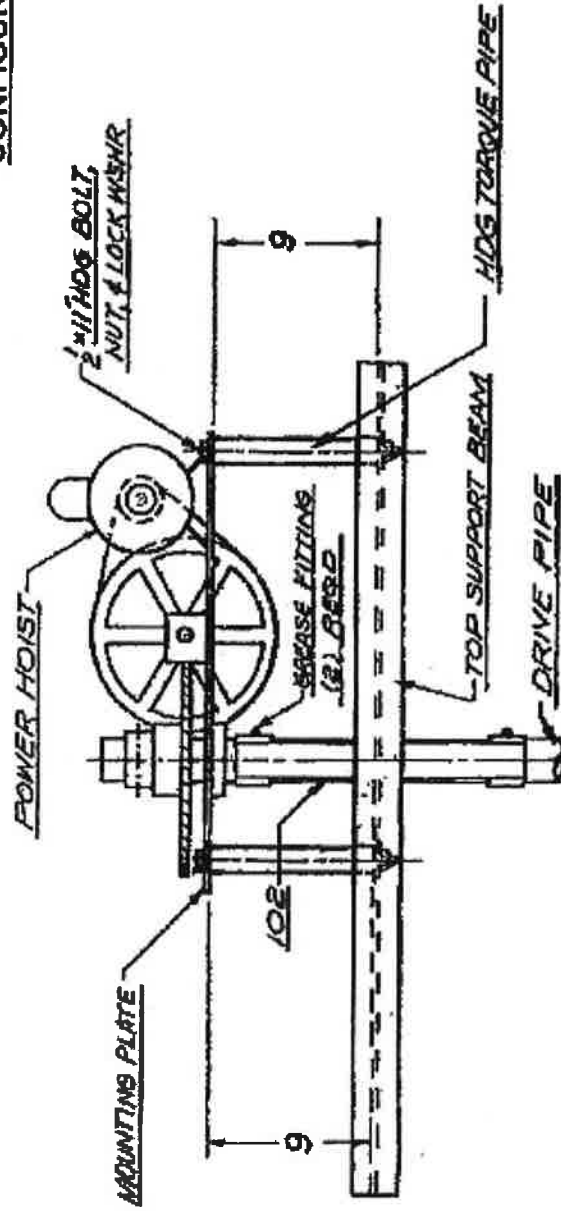
OILITE BUSHING

2) WITH A HAMMER
 DRIVE BUSHING HALF
 WAY INTO PAD EYE BY
 STRIKING BOLT HEAD AS
 SHOWN RIGHT



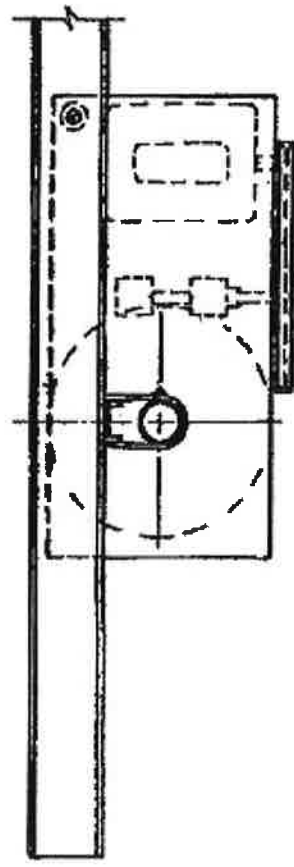
560S PULLEYS

OPTIONAL TORQUE PIPE CONFIGURATION



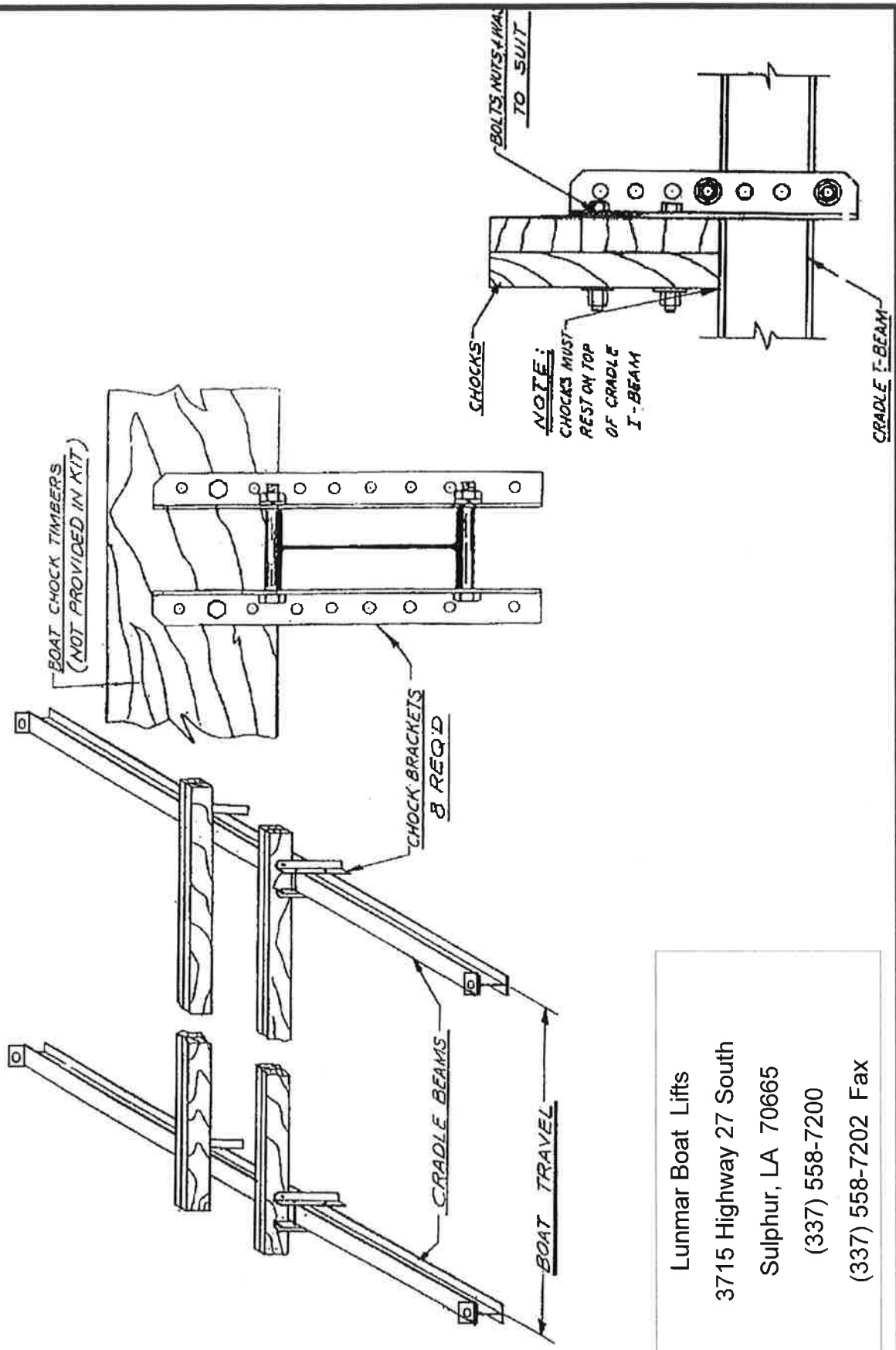
TOP VIEW

NOTE: MOUNTING PLATE MUST BE 90° TO DRIVE PIPE IN BOTH HORIZ. & VERTICAL PLANES



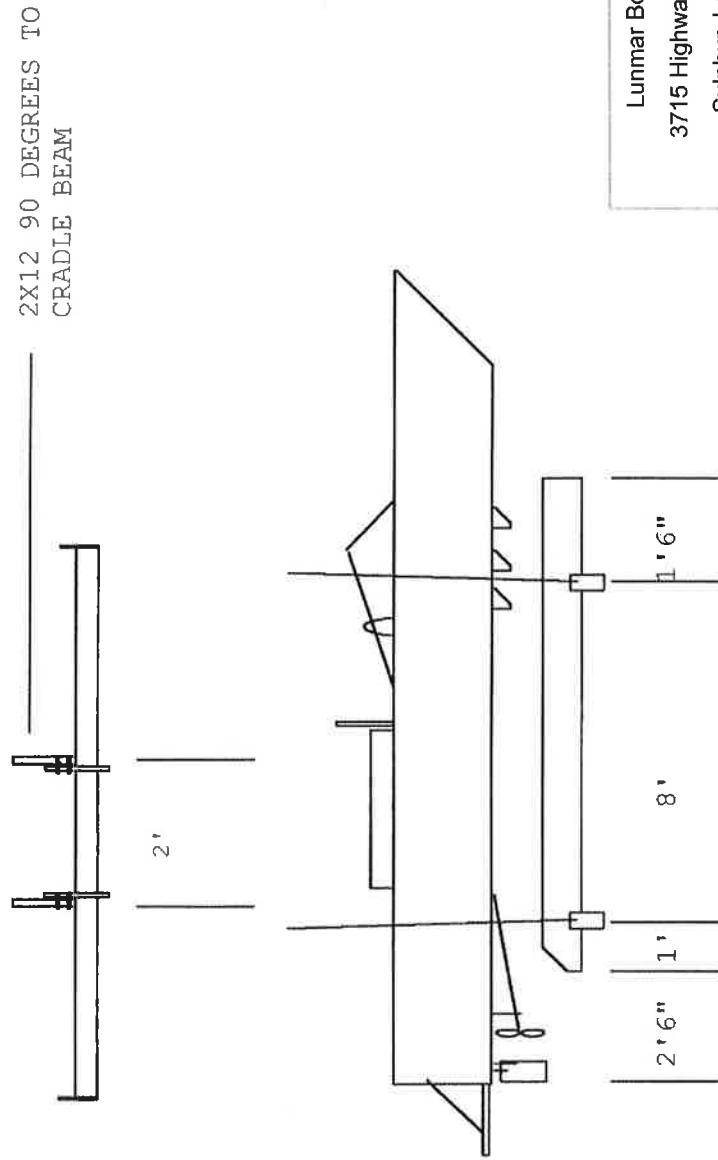
FRONT VIEW

Lunmar Boat Lifts
 3715 Highway 27 South
 Sulphur, LA 70665
 (337) 558-7200
 (337) 558-7202 Fax



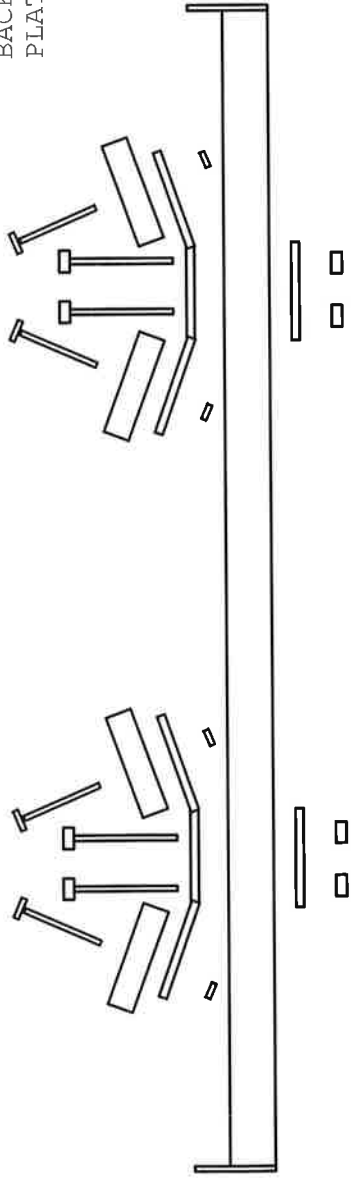
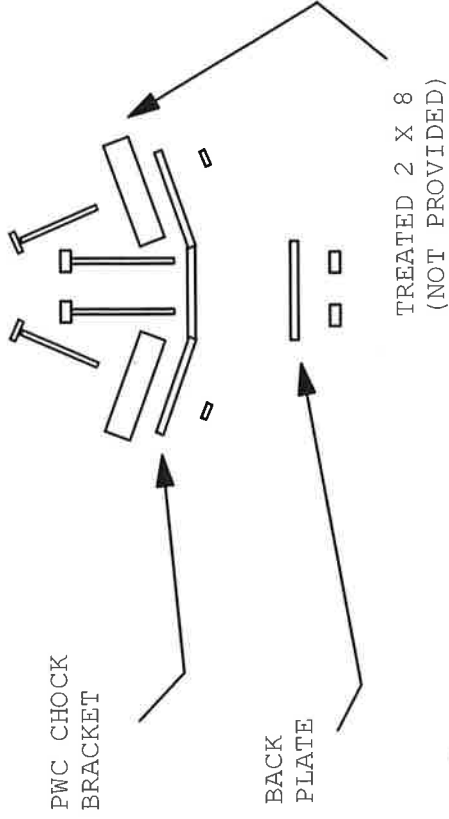
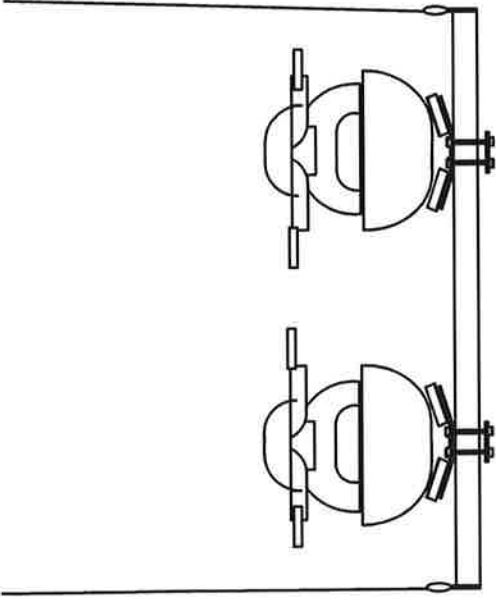
Lunmar Boat Lifts
 3715 Highway 27 South
 Sulphur, LA 70665
 (337) 558-7200
 (337) 558-7202 Fax

LUNMAR 3000, 4000, & 6000 CL
BEAM LAYOUT FOR COMPETITION INBOARD SKI
BOATS WITH CENTER ENGINES



Lunmar Boat Lifts
3715 Highway 27 South
Sulphur, LA 70665
(337) 558-7200
(337) 558-7202 Fax

LUNMAR BOAT LIFTS
 3715 HWY 27 SOUTH
 SULPHUR LA 70665
 337-558-7200
 337-558-7202 (FAX)

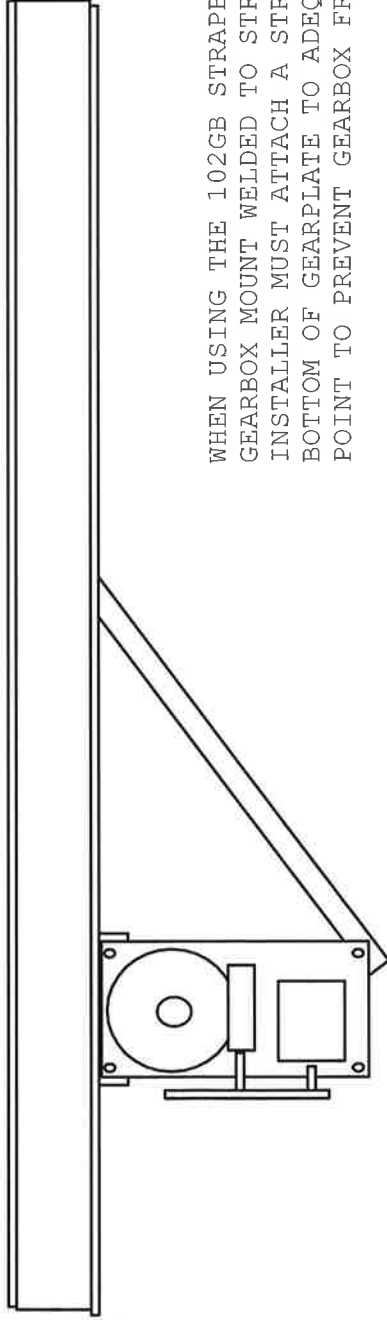


USE THE CARIAGE BOLTS PROVIDED TO BOLT TO BEAM AS SHOW ABOVE. BE SURE AND TIGHTEN BOLTS UNTIL HEAD IS PULLED DOWN INTO TIMBER TO PREVENT DAMAGE TO BOTTOM OF HULL.

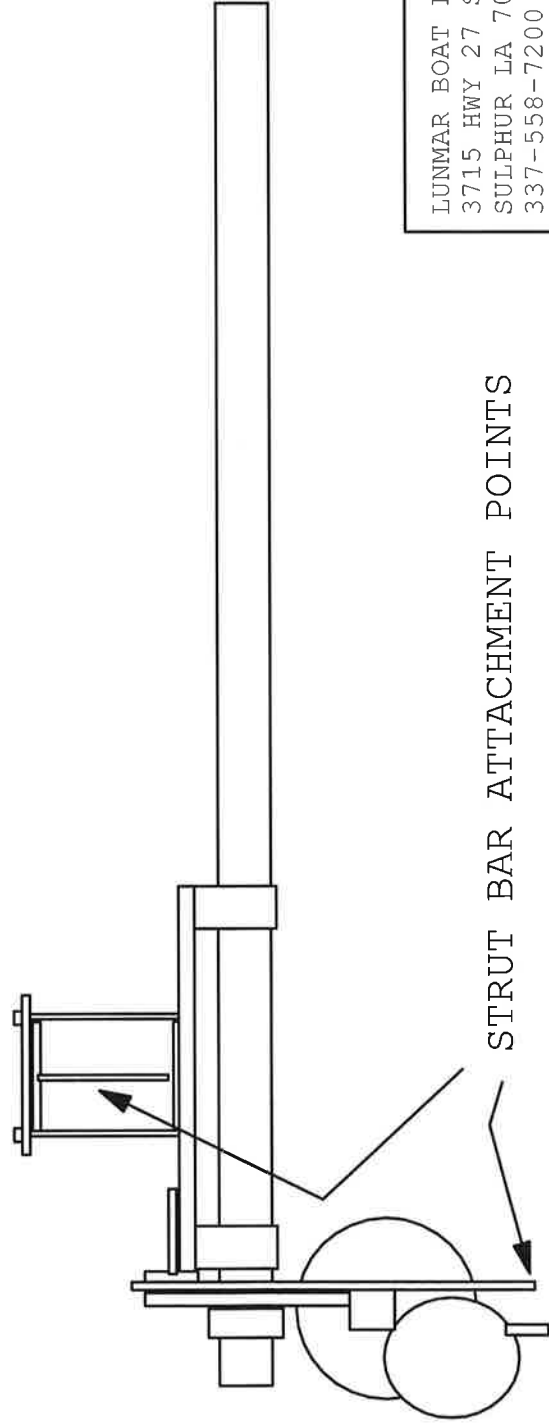
THE DISTANCE BETWEEN FRONT CRADLE BEAM AND AFT CRADLE BEAM WILL BE THE SAME AS THE DISTANCE BETWEEN OVERHEAD SUPPORT BEAMS

LUNMAR BOAT LIFTS

102GB REQUIRES STRUT BAR (NOT PROVIDED)



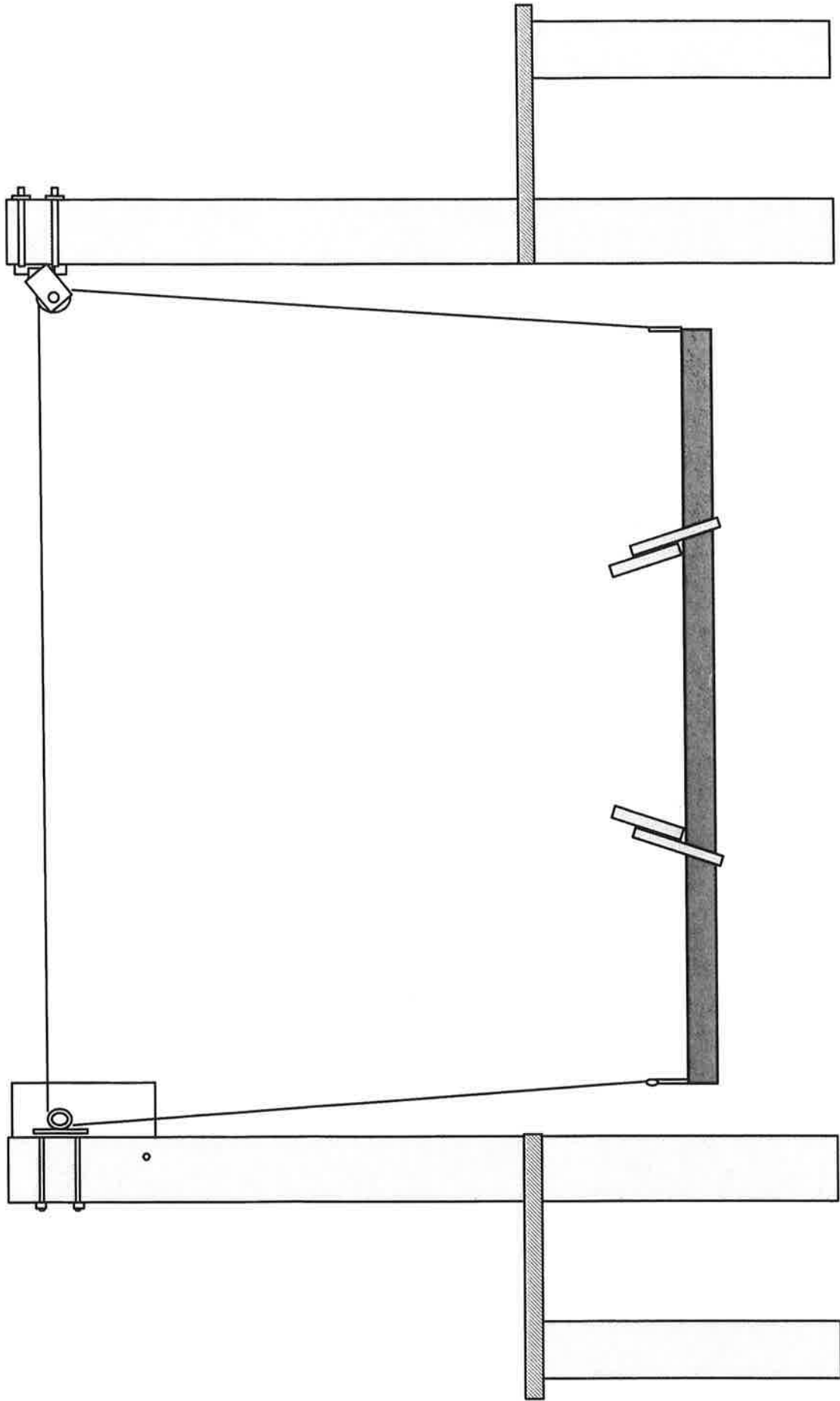
WHEN USING THE 102GB STRAPBEARING WITH GEARBOX MOUNT WELDED TO STRAP BEARING INSTALLER MUST ATTACH A STRUT BAR FROM BOTTOM OF GEARPLATE TO ADEQUATE STRUCTURAL POINT TO PREVENT GEARBOX FROM TORQUING OVER.



STRUT BAR ATTACHMENT POINTS

LUNMAR BOAT LIFTS
3715 HWY 27 SOUTH
SULPHUR LA 70665
337-558-7200
337-558-7202 (FAX)

LUNMAR WOOD MOUNT KITS USING THE PILING MOUNT 102 G AND 560 PARTS



LUNMAR BOAT LIFTS
3715 HWY 27 SOUTH
SULPHUR LA 70665
337-558-7200
337-558-7202 (FAX)

LUNMAR BOAT LIFTS

3715 Highway 27 South Sulphur, LA 70665
(337) 558-7200 Fax (337) 558-7202

LIMITED WARRANTY

Lunmar lifts are warranted to the original purchaser for a period of one year from the date of installation against defects in the material or workmanship as to the lifts electrical components and cables, and for two years against any structural defects, and five years on the gearbox. The word "defects", as used in this warranty, is defined as imperfections which impair the utility of the product.

This warranty is expressly limited to the replacement of lift components having defects. If the lift component is defective within the terms of the warranty, Lunmar, Inc. will furnish a replacement part component at no cost. Lunmar, Inc. is not responsible for any labor or freight costs.

This warranty applies under conditions of normal use, but does not apply to defects that result from intentional damage, improper installation, negligence, unreasonable use or exposure, corrosion or act of nature. Warranty does not apply to padding on lift.

In order to obtain service or to make a warranty claim, the consumer should mail or email a picture (in .jpg format) of the installed boat lift and provide the following information to Lunmar Boat Lifts at 3715 Highway 27 South, Sulphur, LA 70665

1. State your name, address and telephone number
2. State the make and model of your product.
3. State the date your product was installed.
4. State the date you purchased your product and from whom it was purchased. Please provide a proof of purchase.
5. State in clear and concise terms the actual defect that is the basis for your warranty claim.

LUNIMAR
BOAT LIFTS

**3715 Highway 27 South
Sulphur, LA 70665
(337) 558-7200 (337) 558-7201
Toll Free (800) 965-8544
Fax (337) 558-7202**