

LUNMAR INSTALLATION GUIDE
3000, 4000, & 6000 PONTOON
AND CATAMARAN CRADLE KIT
READ ALL INSTRUCTIONS BEFORE STARTING

PARTS LIST--3000#

1--AMS 3000 GEARBOX	1--3/4 ELECTRIC MOTOR
2--102L STRAP BEARINGS	4--108 BEARING BRACKETS
2--560L PULLEYS	1--80' 1/4" GALV CABLE
2--9' CRADLE BEAMS	1--ELECTRIC SWITCH W/GFI
8--GALV 1/4 CABLE CLAMPS	4--1 1/2X1/2 BOLT/NUT/LOCK
8--1/2 FLAT WASHERS	8--3/8X4 GALV CARRIAGE BOLTS

PARTS LIST--4000#

ALL THE PARTS IN THE 3000#
EXCEPT THE ELECTRIC MOTOR IS 1HP INSTEAD OF 3/4

PARTS LIST--6000#

ALL THE PARTS IN THE 3000#
EXCEPT THERE IS 140' OF CABLE INSTEAD OF 80'
PLUS: 4--560 PULLEYS

PARTS LIST--3000# (STEEL MOUNT KIT)

1--AMS 3000 GEARBOX	1--3/4 ELECTRIC MOTOR
2--102L STRAP BEARINGS	1--80' 1/4" GALV CABLE
2--560 PULLEYS	1--ELECTRIC SWITCH W/GFI
2--9' CRADLE BEAMS	4--1 1/2X1/2 BOLT/NUT/LOCK
8--GALV 1/4 CABLE CLAMPS	8--3/8X4 GALV CARRIAGE BOLTS
8--1/2 FLAT WASHERS	

PARTS LIST--4000# (STEEL MOUNT KIT)

ALL THE PARTS IN THE 3000#
EXCEPT THE ELECTRIC MOTOR IS 1HP INSTEAD OF 3/4

PARTS LIST--6000# (STEEL MOUNT KIT)

ALL THE PARTS IN THE 3000#
EXCEPT THERE IS 140' OF CABLE INSTEAD OF 80'
PLUS: 4--560 PULLEYS

PARTS LIST--3000# [FOR 6" CHANNEL KIT]

1--AMS 3000 GEARBOX	1--3/4 ELECTRIC MOTOR
2--102L STRAP BEARINGS	4--8X1/2 BOLT/NUT/LOCK/FLAT
2--102 BACKPLATES	1--80' 1/4" GALV CABLE
2--9' CRADLE BEAMS	1--ELECTRIC SWITCH W/GFI
8--GALV 1/4 CABLE CLAMPS	4--1 1/2X1/2 BOLT/NUT/LOCK
8--1/2 FLAT WASHERS	8--3/8X4 GALV CARRIAGE BOLTS
4--560C PULLEY	

PARTS LIST--4000#

ALL THE PARTS IN THE 3000#
EXCEPT THE ELECTRIC MOTOR IS 1HP INSTEAD OF 3/4

PARTS LIST--6000#

ALL THE PARTS IN THE 3000#
EXCEPT THERE IS 140' OF CABLE INSTEAD OF 80'
PLUS: 4--560 PULLEYS

ADDITIONAL PARTS REQUIRED

- 1--2" X 20' SCHEDULE 40 GALVANISED PIPE
- 2--BUNK BOARDS--(USUALLY TREATED 2X12X16)
- 10--1/2 BOLTS--MEASURE THE THICKNESS OF WOOD BEAM AND ADD 1"
(THESE ARE FOR BOLTING GEARBOX TO BEAM AND PIPE BRACKETS TO BEAM)

OPTIONAL PARTS AVAILABLE

- HOIST COVERS-----CABLE WEIGHTS-----REMOTES
- STAINLESS STEEL CABLE-----CABLE GUIDE POSTS-----GALV GEAR PLATES

DO NOT USE THIS LIFT TO PICK UP HUMANS!!!!!!

NEVER WORK UNDER A HANGING BOAT!!!!!!

**ANY ELECTRICAL MODIFICATIONS MUST BE DONE BY A
CERTIFIED ELECTRICIAN!!**

INSTALLATION INSTRUCTIONS

- 1) MAKE SURE ALL PARTS ARE IN BOX BEFORE DELIVERY DRIVER LEAVES
- 2) CONNECT 102L TO 108 WITH SUPPLIED BOLTS AND WASHERS
- 3) SLIDE 102 ASSEMBLIES ON TO 2" PIPE.
- 4) TIE A ROPE TO EACH END OF PIPE AND HOIST UP TO LOCATION.
PIPE SHOULD BE RUNNING PARALLEL WITH BOAT AND CAN BE MOUNTED ON EITHER SIDE.
- 5) MARK HOLE THROUGH 108 ONTO BEAM AND DRILL.
- 6) BOLT 102 ASSEMBLIES TO BEAM MAKING SURE THE PIPE IS LEVEL AND RIDING IN 102L'S EVEN.



- 7) MEASURE APPROXIMATELY 10' ACROSS FROM PIPE DOWN THE WOOD BEAM FOR LOCATION OF THE 560L LONG SNATCH BLOCK.

- 8) ANGLE THE 560L INWARDS APPROXIMATELY 30' AND MARK HOLES MAKING SURE THE 560L IS LOWER THAN THE 102L ASSEMBLY BY AT LEAST 1".
- 9) DRILL HOLES AND BOLT UP THE 560L'S
- 10) ATTACH MOTOR TO GEARPLATE AND TIGHTEN BELT
- 11) SLIDE GEARBOX ASSEMBLY ON TO PIPE AND LINE UP AGAINST BEAM AND MARK HOLES MAKING SURE THE GEARBOX IS PERPENDICULAR TO THE PIPE. IF NOT SHIM THE GEARBOX AS NEEDED.
- 12) BOLT UP GEAR BOX
- 13) DRILL 1/2 HOLE IN 2" PIPE AND MOUNT GEARBOX TO PIPE WITH SUPPLIED BOLT.
- 14) DRILL 5/16 HOLE THROUGH PIPE IN THE CENTER OF THE 102L.
- 15) RUN CABLE THROUGH PIPE -----THROUGH THE 260---DOWN TO CRADLE BEAM AND CLAMP WITH 2 SUPPLIED CLAMPS (IF 6000# RUN THROUGH 560S AND DEADMAN OFF ON OVERHEAD BEAM)
- 16) WITH NO WRAPS OF CABLE ON THE PIPE YOU CAN LEVEL CRADLE BEAMS BY PULLING DOWN ON CABLE.
- 17) GREASE THE GEARBOX AT THE THREE ZERTS AND APPLY A LIBERAL AMOUNT OF GREASE TO FLYWHEEL AND WORM GEAR. APPLY A SMALL AMOUNT OF GREASE ON THE 102L WHERE THE PIPE RUBS.
- 18) LAY THE 2 BUNKS BOARDS FLAT ON THE CRADLE BEAMS. MEASURE THE DISTANCE BETWEEN PONTOONS AND USE THIS DISTANCE TO CENTER BOARDS ON CRADLE.
- 19) DRILL 3/8 HOLE THROUGH BUNK BOARDS AND CRADLE BEAM AND ATTACH WITH THE SUPPLIED 8 CARRIAGE BOLTS.
- 20) RUN ELECTRICAL WIRE AND PLUG IN UNIT MAKING SURE SWITCH IS OFF AND ALL PERSONS ARE CLEAR.
- 21) HOLDING TENSION ON EACH CABLE TURN WINCH ON AND GUIDE CABLES SO THAT CABLES WRAP OPPOSING EACH OTHER WITHOUT STACKING.
- 22) LOWER WINCH AND SLIDE BOAT ON TO LIFT.
- 23) TURN WINCH ON TO PICK UP BOAT.
- 24) GREASE WINCH EVERY 3 MONTHS/ CHECK CABLES EVERY 3 MONTHS.

TROUBLESHOOTING

***BOAT LIFT MAKES EXCESSIVE AMOUNTS OF NOISE
102 ARE OUT OF ALIGNMENT
UNIT IS NOT GREASED PROPERLY
GEARBOX IS NOT 90° TO PIPE
CABLE IS RIDING AGAINST 102L ASSEMBLY***

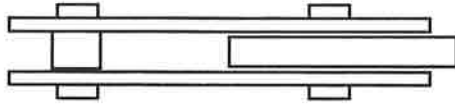
***BOAT LIFT WILL NOT PICK UP BOAT
BOAT WEIGHS MORE THAN LIFT CAPACITY
LOW VOLTAGE TO MOTOR—#1 PROBLEM
BAD ALIGNMENT
BELT IS SLIPPING***

LUNMAR BOAT LIFTS 3715 HIGHWAY 27 SOUTH SULPHUR, LA 70665 (337)558-7200

LUNMAR BOAT LIFTS
337-430-0533

6000 CRADLE KIT

560S PULLEY

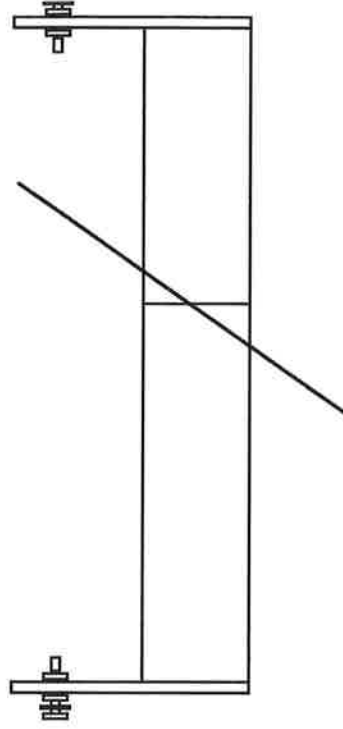
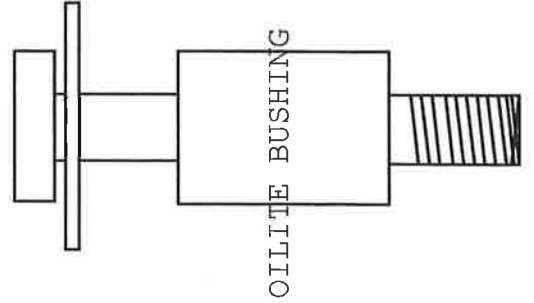


REMOVE BOLT AND
OILITE BUSHING TO
ATTACH TO SLING OR
CRADLE

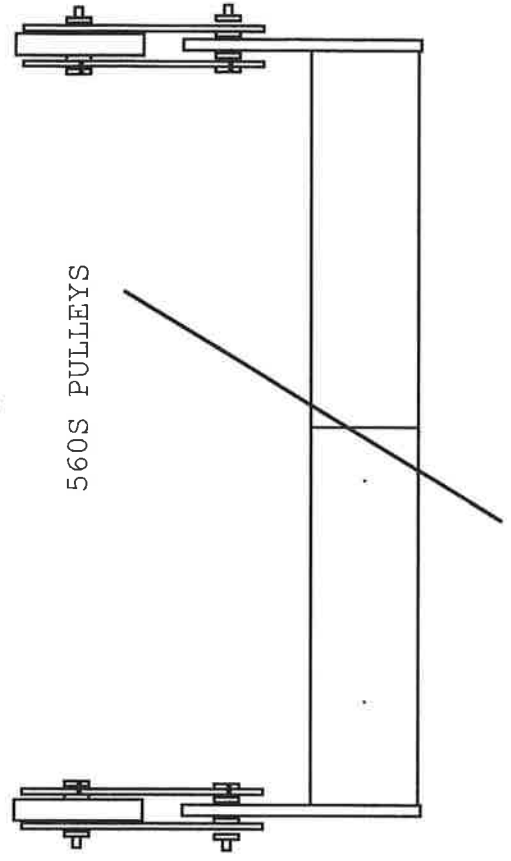
BUSHING MUST BE
PRESSED INTO 7/8 HOPES
ON PAD EYES OF CRADLE
BEAMS.

1) INSERT BOLT/WASHER
INTO OILITE BUSHING AS
SHOWN LEFT

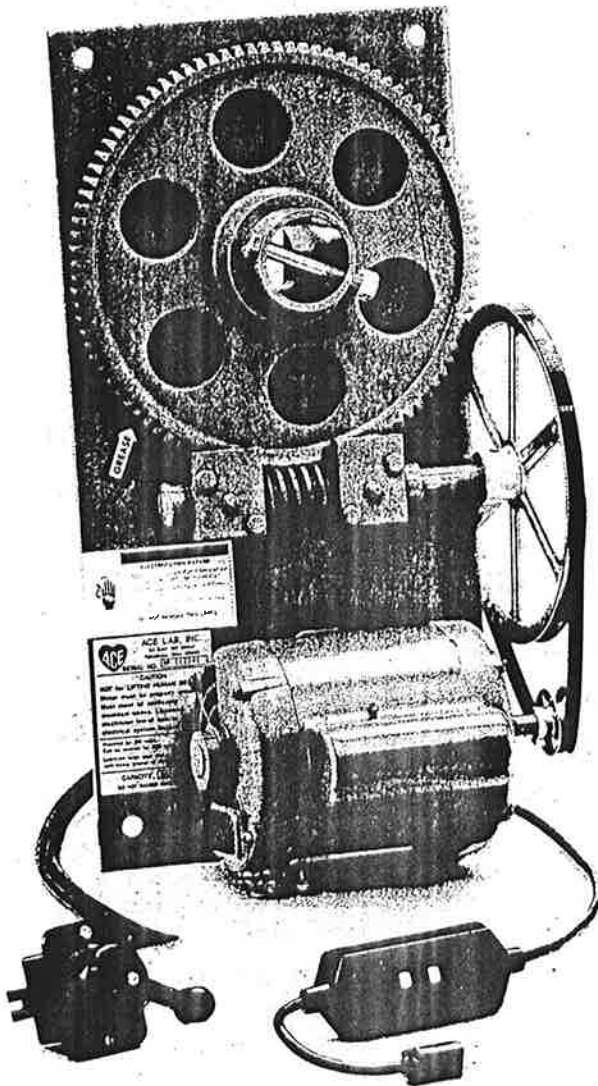
2) WITH A HAMMER
DRIVE BUSHING HALF
WAY INTO PAD EYE BY
STRIKING BOLT HEAD AS
SHOWN RIGHT



560S PULLEYS



Now featuring a Ground Fault Circuit Interrupter for powering boat lift systems with maximum safety!



Made in America of 100% American parts in Pataskala, Ohio, the new Ace 401 Power Hoist is better than ever. With the addition of a new safety feature, the Ground Fault Circuit Interrupter (GFCI), the Ace 401 Power Hoist will help prevent shocks from faults in the wiring by sensing any deviation in the flow and return of the current.

Incorporated in all Ace electrically operated boat lift systems, the 401 Power Hoist with GFCI will typically trip within half a second when it detects a 5 milliamp variation in the current.

Designed for use in Ace Davits, Verti-Lifts, Elev-Verts, Boat House installations, Personal Watercraft and Jetboat Lifts, it can also be readily adapted to most other existing lift systems. The quality and reliability of the Ace 401 Power Hoist is indicative of Ace's leadership in the boat hoist industry.

SPECIFICATIONS:

Motor: 3/4 hp, 1725 rpm, capacitor start, 115V @ 11.2 amps/230V @ 5.6 amps, J-56 frame.

Switch: UL approved, full contact breaking, reversing type, plastic UV protected mounting box.

Wire: Factory pre-wired for 115V, standard with 16' of 16/5 SJTWA weatherproof control cable from the switch to the motor and 9' long GFCI-protected 3-prong AC cord.

Capacity: 2,800# straight lift (3.5 rpm @ 24" per minute travel), 5,600# compound lift (3.5 rpm @ 12" per minute travel).

Base Plate: 24" x 12" x 14" cold formed steel.

Options: #101P Hoist Cover (protects motor side of gear plate), includes pulley guard and mounting hardware.

T.E.F.C. Motors (Totally Enclosed Fan Cooled).

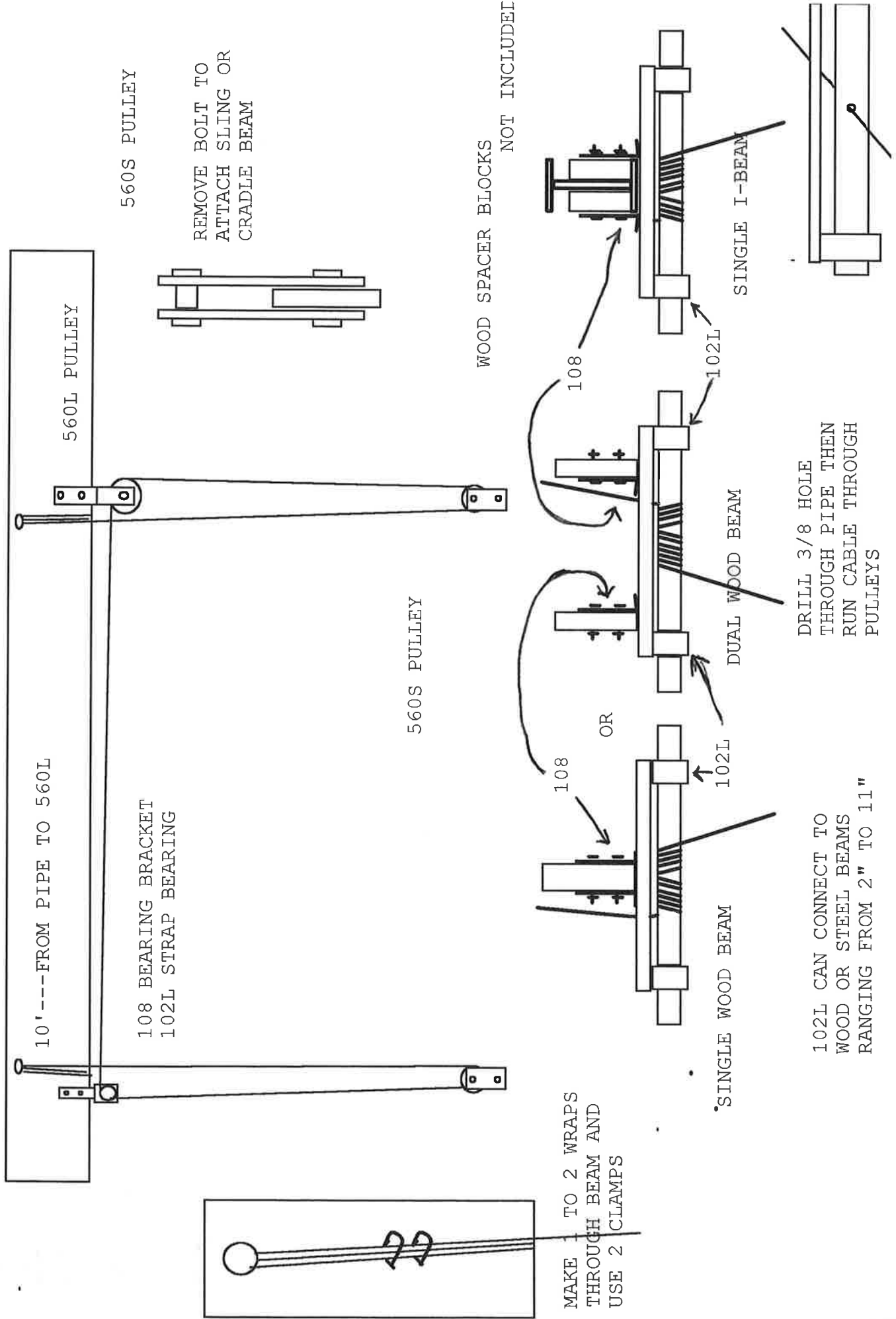
Optional lengths of 16/5 control wire available on request.

Momentary switches.

INDIVIDUAL BRANCH CIRCUITS FOR SINGLE-PHASE MOTOR					
MOTOR HP	VOLTS	MINIMUM WIRE SIZE (GAGE) FOR BRANCH CIRCUITS INDICATED			
		0-50 FT.	100 FT.	200 FT.	500 FT.
1/4	230	14	14	12	8
	115	14	12	10	6
1/3	230	14	14	12	8
	115	14	12	10	4
1/2	230	14	12	10	6
	115	12	10	8	4
3/4	230	14	12	10	6
	115	12	8	6	2
1	230	14	10	8	4
	115	10	8	6	—

DRILL HOLE AND RUN
CABLE THROUGH BEAM
FOR DEADMAN

LUNMAR 6000SL AND CL



10'---FROM PIPE TO 560L

560L PULLEY

560S PULLEY

108 BEARING BRACKET
102L STRAP BEARING

REMOVE BOLT TO
ATTACH SLING OR
CRADLE BEAM

560S PULLEY

WOOD SPACER BLOCKS
NOT INCLUDED

MAKE 2 TO 2 WRAPS
THROUGH BEAM AND
USE 2 CLAMPS

108

108

OR

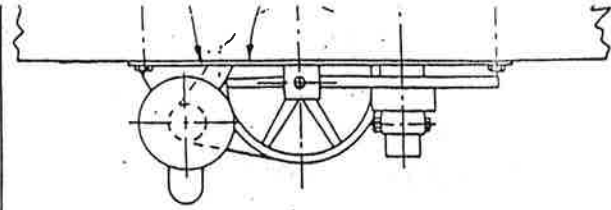
SINGLE WOOD BEAM

DUAL WOOD BEAM

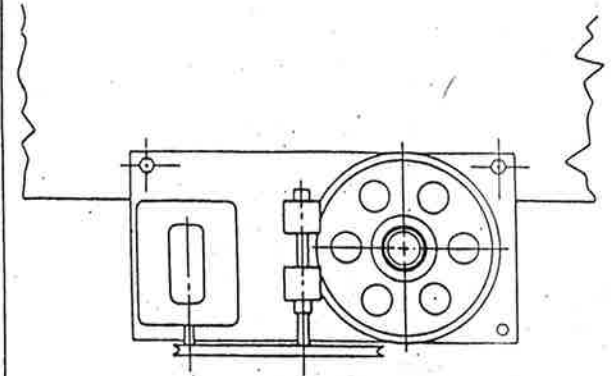
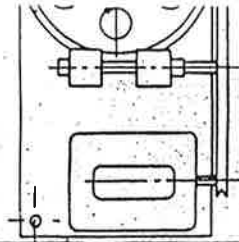
SINGLE I-BEAM

DRILL 3/8 HOLE
THROUGH PIPE THEN
RUN CABLE THROUGH
PULLEYS

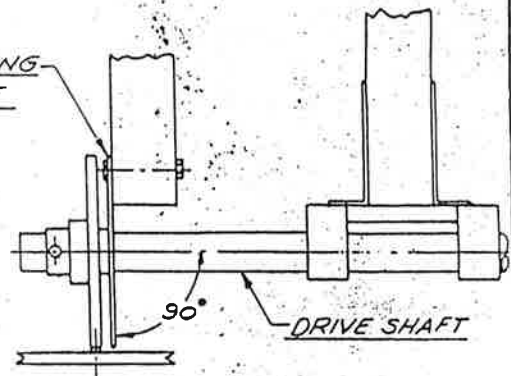
102L CAN CONNECT TO
WOOD OR STEEL BEAMS
RANGING FROM 2" TO 11"



— NOTE —
 PLATE MUST BE
 90° TO DRIVE SHAFT
 IN BOTH HORIZONTAL
 & VERTICAL PLANES.
 USE SHIMS
 WHERE REQD



MOUNTING
 PLATE



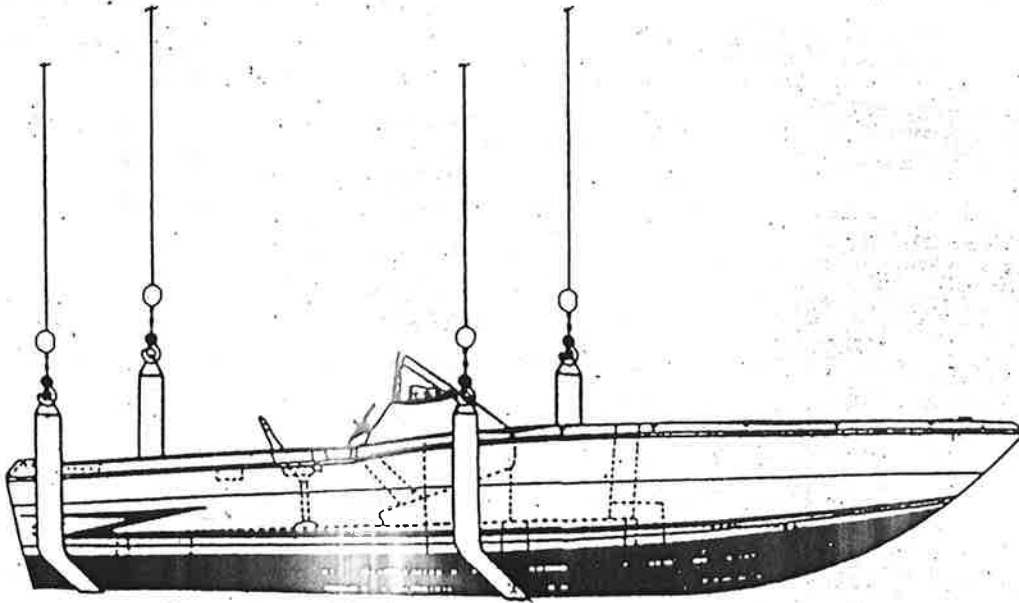
BOAT HOUSE INSTALLATION FOR #401 POWER HOIST
MOUNTING PLATE MUST BE 90° TO DRIVE SHAFT
IN BOTH HORIZONTAL & VERTICAL PLANES.
USE SHIMS WHERE REQUIRED.

LUNMAR, INC.
 800 965-8544

SCALE: 1 1/2" = 1'-0"

NO. I.D. - 100

NO. I-502

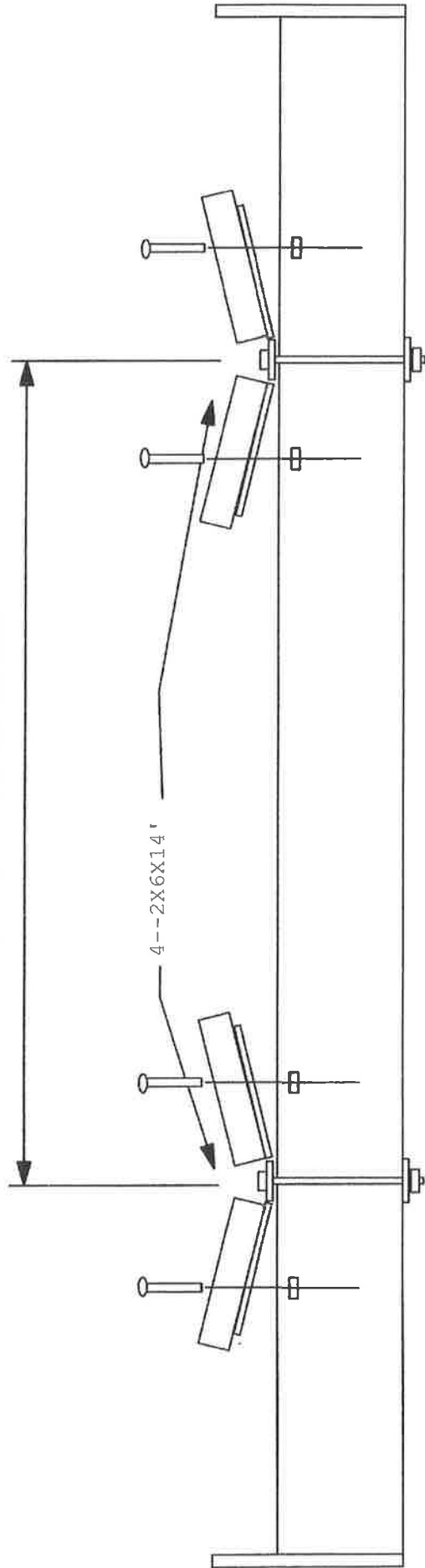


FOR OPTIMUM PERFORMANCE :

EQUAL WEIGHT DISTRIBUTION
IS REQUIRED ON ALL 4 CABLES.

4-POINT SLING HOIST

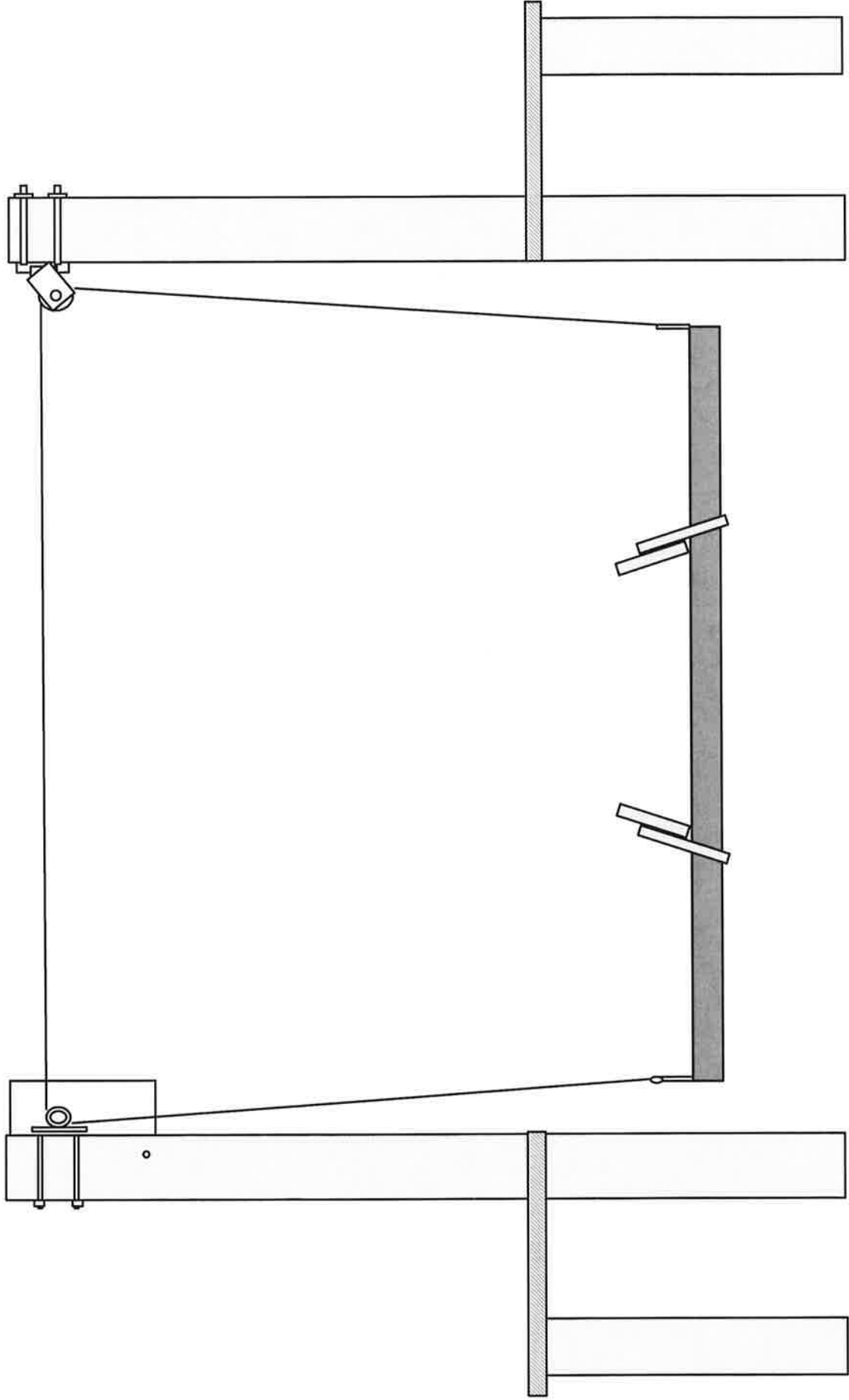
DISTANCE FROM CENTER OF
PONTOON TO CENTER OF PONTOON



LUNMAR PONTOON CHOCK BRACKETS

LUNMAR BOAT LIFTS
3715 HWY 27 SOUTH
SULPHUR LA 70665
337-558-7200
337-558-7202 (FAX)

LUNMAR WOOD MOUNT KITS USING THE PILING MOUNT 102 G AND 560 PARTS



LUNMAR BOAT LIFTS
3715 HWY 27 SOUTH
SULPHUR LA 70665
337-558-7200
337-558-7202 (FAX)