

LUNMAR BOAT LIFTS  
3715 HWY 27 SOUTH  
SULPHUR LA  
70665  
337-558-7200

### LUNMAR 10000# CRADLE KIT

#### ADDITIONAL PARTS REQUIRED

- 2-1 ½ SCHEDULE 80 GALVANIZED PIPES (21 JOINT USUALLY)
- 20 ½ X 5 ½ BOLTS NUTS LOCKS AND FLATS (IF BOLTING TO TRIPLED 2 X 12'S)
- 20 WIRE STAPLES FOR TAKING UP WIRING HARNESS
- 2 3 X 10 X 14 TREATED BUNKS
- 2 6" X 16' CARPET STRIPS
- 1 BOX OF MONEL STAPLES

#### PARTS LIST

- 2 AMS 4000 GEARBOXES
- 2 1HP MOTOR WITH SWITCH
- 1 106 GEARBOX MOUNT (LEFT)
- 1 106 GEARBOX MOUNT (RIGHT)
- 8 109W SEALED BEARINGS
- 4 110 DEADMAN PLATES
- 2 COVERS
- 2 ADAPTER SLEEVES
- 4 560 PULLEYS
- 4 CABLE GUIDE POSTS
- 4 5/8 SHACKLES
- 4 5/16 X 30 STAINLESS CABLE WITH ½ SHACKLE
- 4 3/16 CABLE CLAMP
- 2 6" x 10' CRADLE BEAMS
- 4 834 L CHOCK BRACKETS
- 4 834R CHOCK BRACKET
- 8 ½ X 5/12 BOLTS NUTS LOCKS
- 8 ½ X 4 ½ CARRIAGE BOLTS NUTS LOCKS FLATS
- 2 SETS OF STAINLESS COVER HARDWARE

#### OPTIONAL EQUIPMENT AVAILABLE

- GEM 2 REMOTE CONTROL
- AUTO STOPS
- GUIDE POST BRACKETS
- LONGER CRADLE BEAMS
- CANOPIES

#### INSTALLATION INSTRUCTIONS

- 1) CHECK AND MAKE SURE ALL PARTS ARE IN BOXES BEFORE DELIVERY DRIVER LEAVES.
- 2) ASSEMBLE BEARINGS AND BEARING FLANGES AS SHOWN IN DIAGRAM
- 3) SLIDE 4 BEARING ASSEMBLIES ON EACH 1 ½ PIPE ( ALL BEARING GOING IN THE SAME DIRECTION
- 4) SUSPEND PIPE/BEARINGS BY A ROPE UNDER THE WOOD SUPPORT BEAM THAT WILL BE HOLDING THE LIFT.

- 5) EACH PAIR OF BEARINGS SHOULD BE 20" APART AND EACH SET SHOULD BE 10' TO 14' APART DEPENDING ON THE LENGTH OF BOAT.
- 6) WITH THE PIPE LEVEL MARK HOLES AND DRILL.
- 7) BOLT UP BEARING TO WOOD BEAM
- 8) BOLT THE 106 BEARING BRACKET TO GEARBOX. WASHER WITH A STUD ON IT GOES ON THIS BOLT TO HOLD COVER.
- 9) SLIDE PCV ADAPTER SLEEVE OVER PIPE ON THE END THAT YOU WANT THE GEARBOX MOUNTED.
- 10) SLIDE GERBOX ON PIPE AND ADAPTER SLEEVE.
- 11) MARK HOLES ON GEARBOX MOUNT, DRILL, AND BOLT UP.
- 12) DRILL ½ HOLE THROUGH PVC BUSHING AND PIPE USING THE GEARBOX MOUNTING HOLE AS A GUIDE
- 13) MOUNT MOTOR ON GEAR BOX AND INSTALL COVER HARDWARE SLIDE BRACKET ON TO LOWER BOLT HOLES.
- 14) RUN CABLE THROUGH THE 560 PULLEY
- 15) DRILL 3/8 HOLE THROUGH PIPE BETWEEN BEARINGS 1" FROM BEARING AS SHOWN IN VIEW A. ATTACHING 3/16 CABLE CLAMP TO DEAD END OF CABLE
- 16) BOLT 110 DEADMAN HANGER APPROX 1' FROM THE HOLE THAT IS DRILLED IN THE PIPE AND ATTACH TO THE WOOD BEAM AS SHOWN IN VIEW A
- 17) ATTACH SHACKLE TO DEADMAN HANGER.
- 18) REPEAT ABOVE STEPS UNTILL ALL CABLES AND BEARINGS ARE HANGING
- 19) ATTACH CABLE GUIDE POSTS TO PULLEY BY REMOVE BOLT AND BUSHING AND REPLACING
- 20) ATTACH THE CABLE GUIDE POST TO CRADLE BEAM WITH SHACKLE
- 21) ATTACH CHOCK BRACKETS TO CRADLE BEAMS AS SHOWN IN DIAGRAM I-104
- 22) ATTACH WOOD BUNKS TO CHOCK BRACKETS AS SHOWN IN DIAGRAM I- 504
- 23) MOUNT COVERS TO GEARBOXES
- 24) BUNKS BOARDS ON MOST VEE BOTTOM BOATS SHOULD BE AT 60" APART AT STERN AND 56" AND BOW.
- 25) CATAMARAN AND PONTOON BOATS DO NOT USE THE CHOCK BRACKETS. BOLT BUNKS BOARDS FLAT TO CRADLE BEAMS.
- 26) PLUG IN MOTORS AND CHECK ALL NUT AND BOLTS LOWER LIFT DOWN AND LIFT BOAT

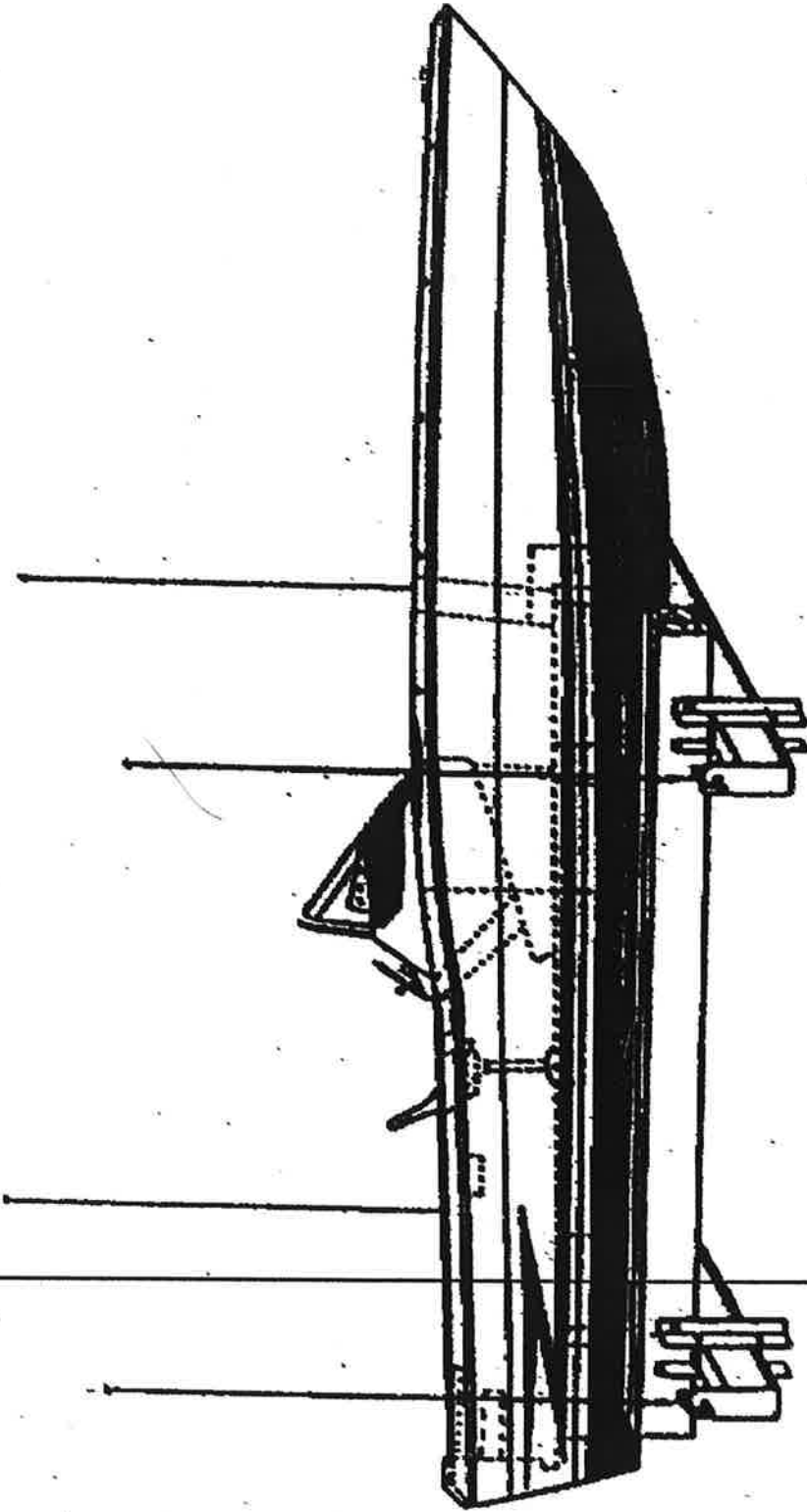
#### TROUBLESHOOTING

- 1) GEARBOXES MAKING SCRAPING NOISE—ADD MORE GREASE
- 2) LIFT DOES NOT PICK UP BOAT—CHECK VOLTAGE AND MAKE SURE YOU DO NOT HAVE A VOLTAGE DROP OF MORE THAN 4%. CHECK WEIGHT OF BOAT. CHECK TO SEE IF BEARINGS ARE BINDING DUE TO AN ALIGNMENT PROBLEM.
- 3) LIFT SHOCKS YOU WHEN STANDING IN WATER AND TOUCHING LIFT. TURN LIFT OFF IMMEDIATELY AND CALL AN ELECTRICIAN.

**Never use this lift to pick up humans!!!!!!!**

**Never work under a hanging boat!!!!!!!**

**Use certified electrician!!!!!!!**



FOR OPTIMUM PERFORMANCE:

EQUAL WEIGHT DISTRIBUTION  
IS REQUIRED ON ALL 4 CABLES.

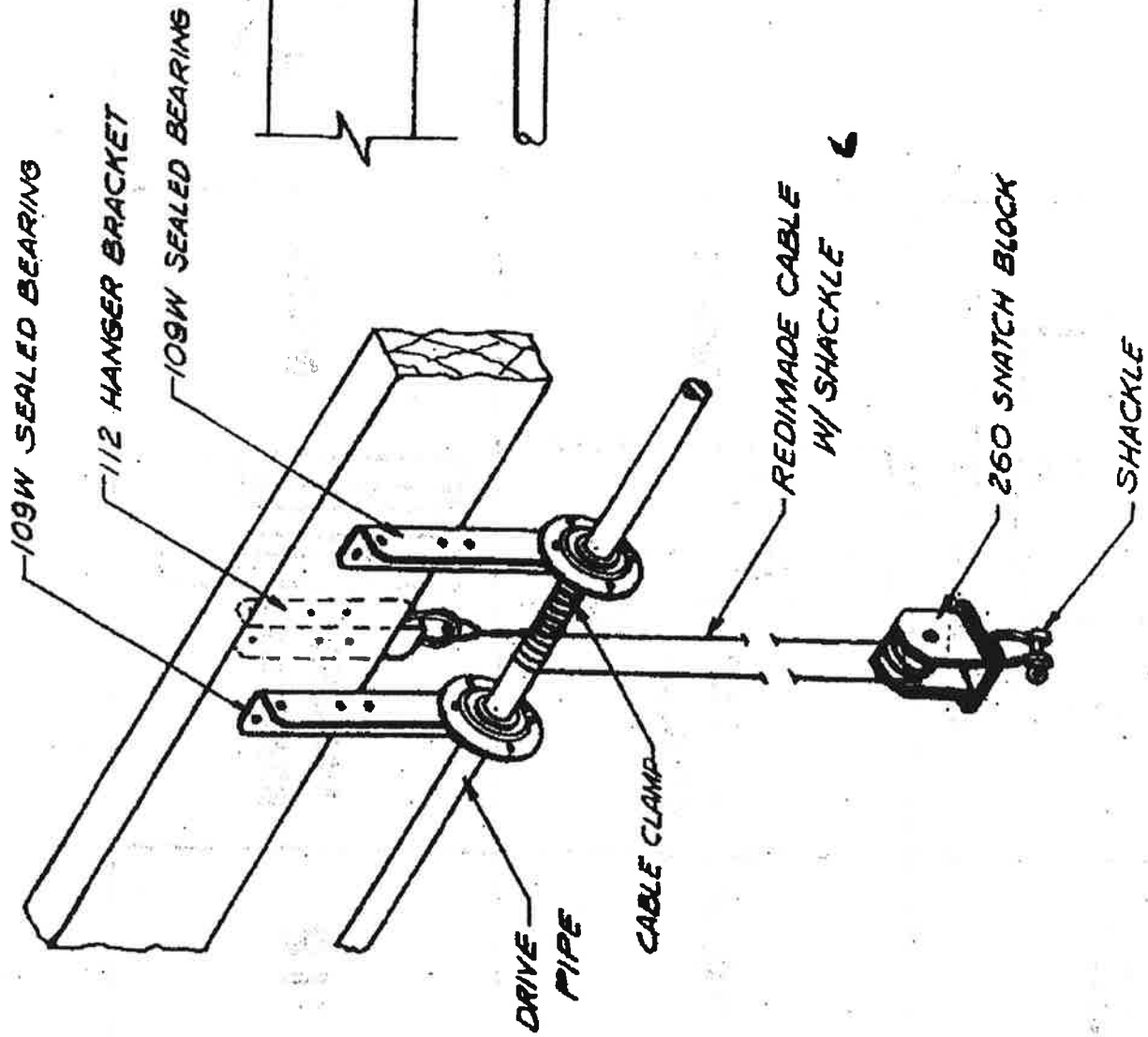
TO OBTAIN EQUAL WEIGHT DISTRIBUTION:

1. USE BALANCE POINT OF BOAT.
2. DO NOT USE CENTER OF BOAT LENGTH

4-POINT CRADLE HOIS

INSTRUCTIONS FOR WEIGHT DISTRIBUTION
SCALE NONE
NO. I-503

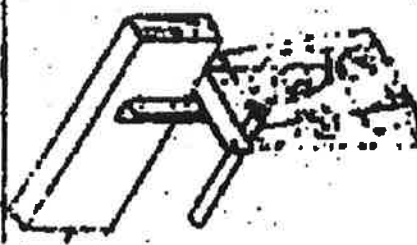
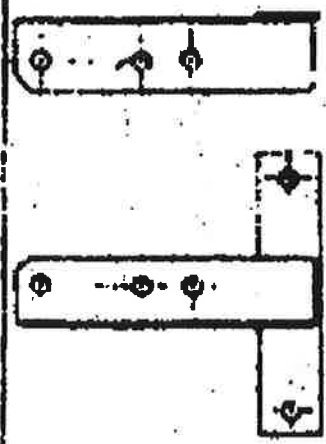

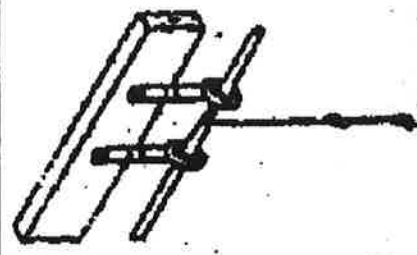
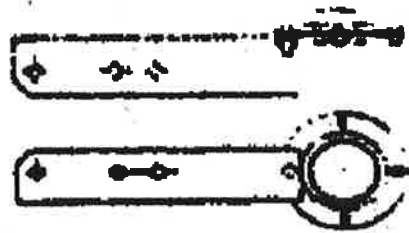
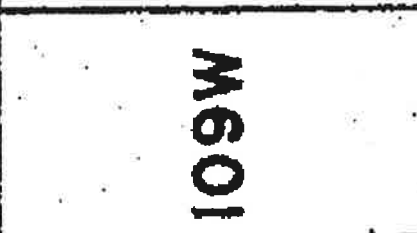
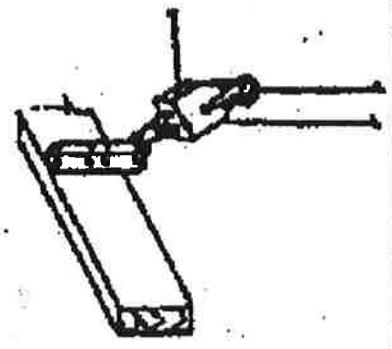
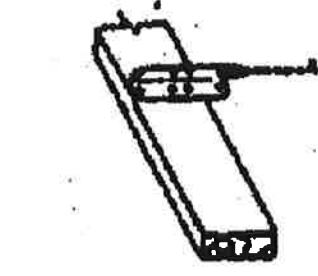
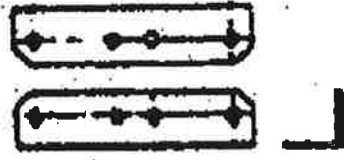
NO. I.D. 115



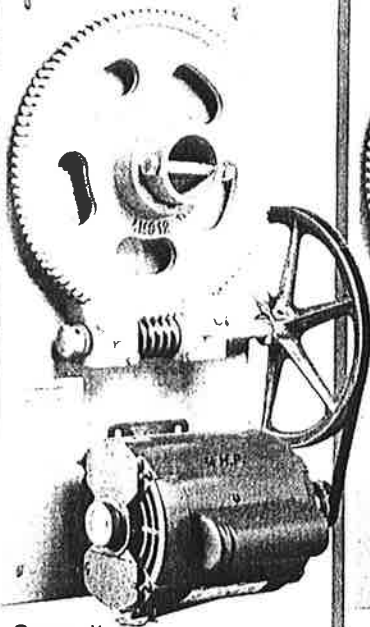
109W APPLICATION  
2 PART LINE

SCALE - NONE

NO. I.D. - 115

	 <p data-bbox="414 1134 470 1648"><b>MOTOR MOUNT (WOOD)</b></p>	
	 <p data-bbox="673 1533 771 1722"><b>SEALED BEARING</b></p> <p data-bbox="690 1113 747 1260"><b>(WOOD)</b></p>	
		 <p data-bbox="1096 1512 1201 1711"><b>HANGER BRACKET</b></p> <p data-bbox="1112 1113 1169 1260"><b>(WOOD)</b></p>
<p data-bbox="251 1795 332 1984"><b>106W</b></p>	<p data-bbox="673 1795 755 1984"><b>109W</b></p>	<p data-bbox="1104 1827 1177 1942"><b>112</b></p>

# SPECIFICATIONS AND FEATURES



**Capacity**  
Model 3000 (Easily Lifts  
3000 pounds)

**Motor**  
¾ H.P. - 120/240 Volt,  
available TEFC & DC

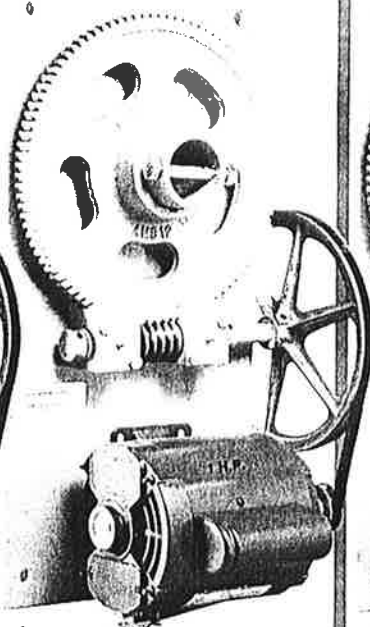
**Wiring**  
14 Gauge (weatherproof)

**Plate**  
¼" steel 12 x 24"  
Baked on  
Powder Coat

**Gear**  
12" cast-  
precision machined

**Shipping Weight**  
69 pounds UPS shipping

**Hoist Travel Speed**  
3.5 Vertical Feet  
Per Min. Faster  
travel speed units  
available



**Capacity**  
Model 4000 (Easily Lifts  
4000 pounds)

**Motor**  
1 H.P. - 120/240 Volt,  
available TEFC

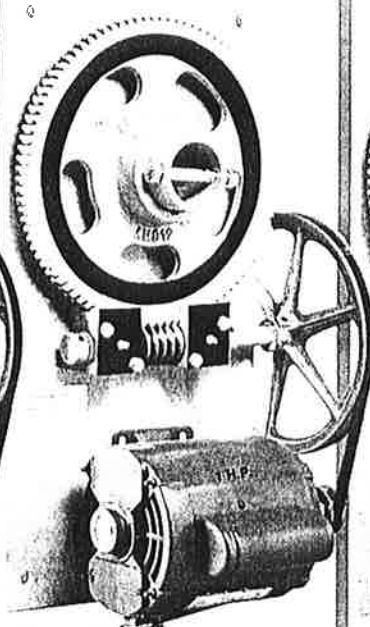
**Wiring**  
14 Gauge (weatherproof)

**Plate**  
¼" steel 12 x 24"  
Baked on  
Powder Coat

**Gear**  
12" cast-  
precision machined

**Shipping Weight**  
74 pounds UPS shipping

**Hoist Travel Speed**  
3.5 Vertical Feet  
Per Min. Faster  
travel speed units  
available



**Capacity**  
Model 6500 (Easily Lifts  
6500 pounds)

**Motor**  
1 H.P. - 120/240 Volt,  
available TEFC

**Wiring**  
12 Gauge (weatherproof)

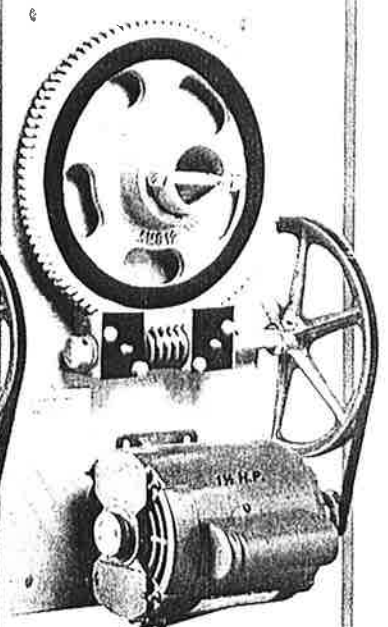
**Plate**  
¼" steel 12 x 24"  
Baked on  
Powder Coat

**Gear**  
12" Heavy duty cast-  
precision machined

**Shipping Weight**  
79 pounds UPS shipping

**Hoist Travel Speed**  
4.5 Vertical Feet  
Per Min. Faster  
travel speed units  
available

**Steel Pulleys** Patent Pending



**Capacity**  
Model 8500 (Easily Lifts  
8500 pounds. Standard  
with Twin Belt)

**Motor**  
1½ H.P. - 120/240 Volt,  
available TEFC

**Wiring**  
12 Gauge (weatherproof)

**Plate**  
¼" steel 12 x 24"  
Baked on  
Powder Coat

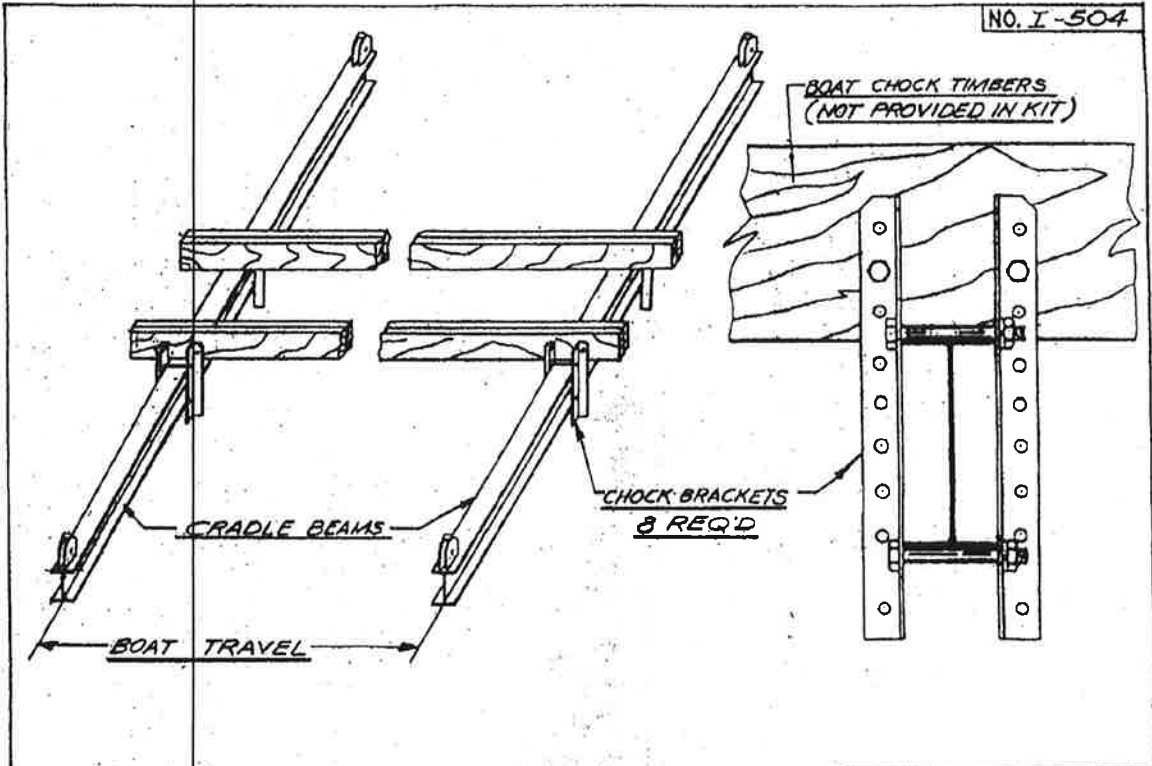
**Gear**  
12" Heavy duty cast-  
precision machined

**Shipping Weight**  
89 pounds UPS shipping

**Hoist Travel Speed**  
5.3 Vertical Feet  
Per Min.

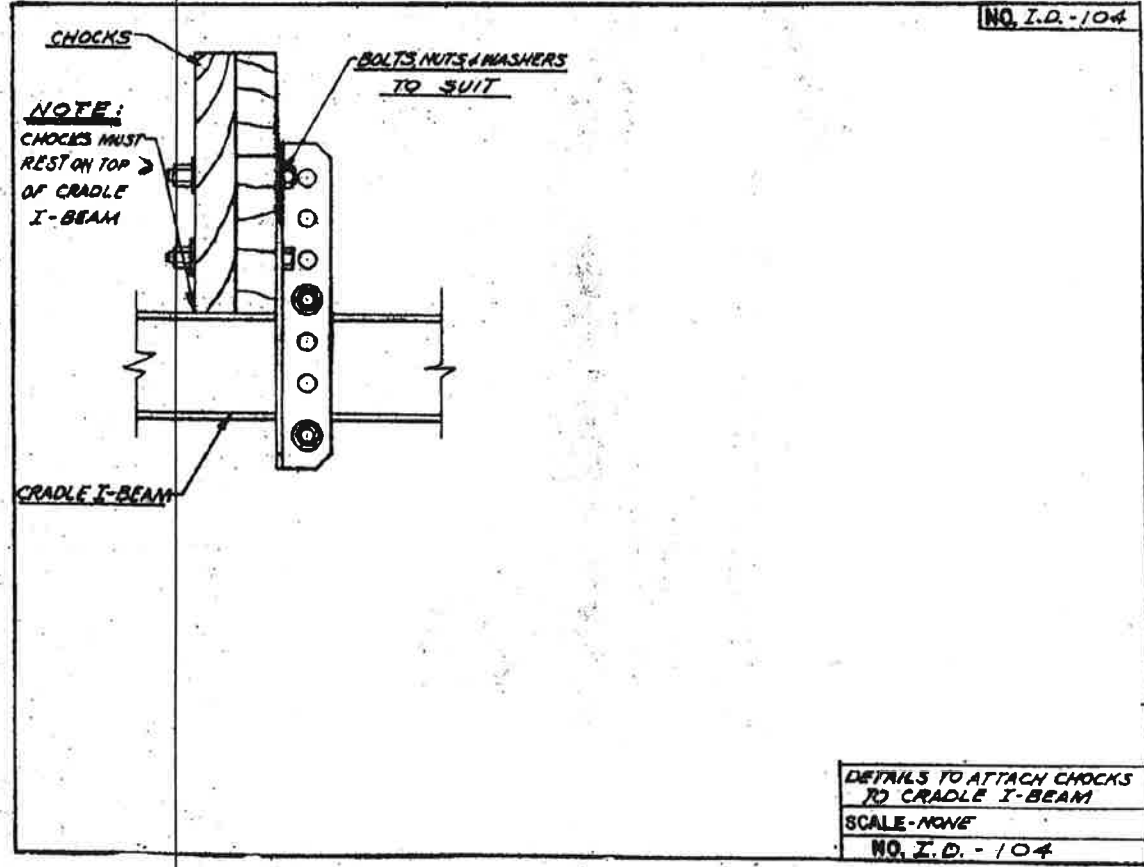
**Steel Dual Pulleys**

Patent Pending



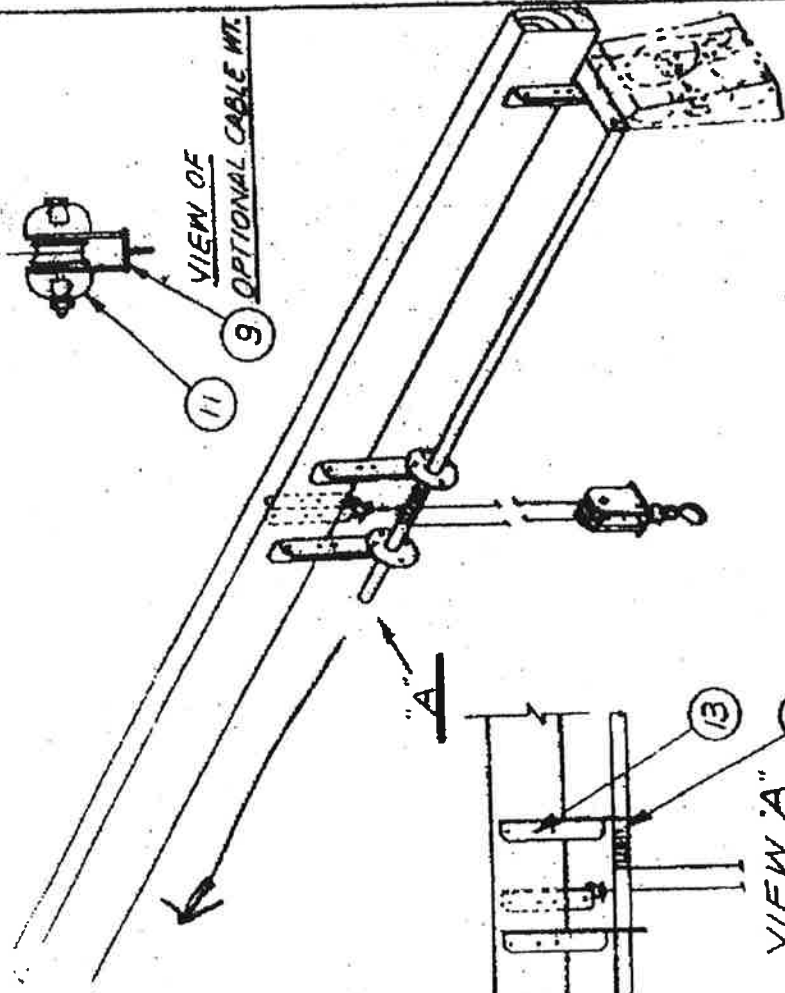
CHOCK BOARD APPLICATIONS USING THE #834 CHOCK BRACKET  
 (NOTE: CHOCK BOARDS MUST BE FIT TO THE HULL)

CHOCK RAILS OR "BUNKS"  
 SCALE NONE DATE 5-22-95  
 NO. I-504



DETAILS TO ATTACH CHOCKS  
 TO CRADLE I-BEAM  
 SCALE-NONE  
 NO. I.D.-104

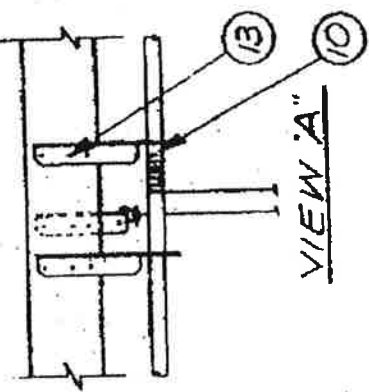
NO. I-109



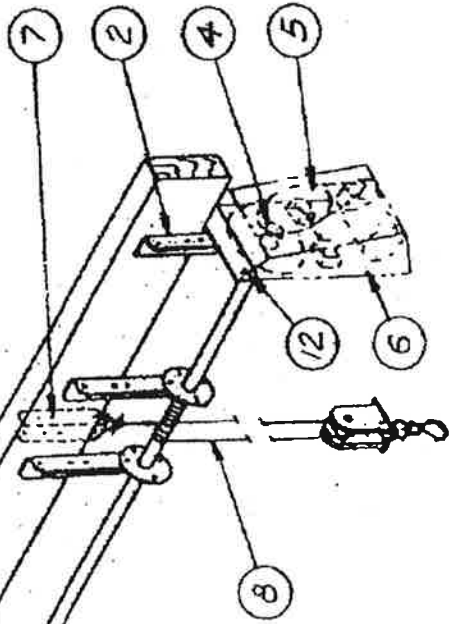
VIEW OF  
OPTIONAL CABLE WT.  
9

11

"A"



VIEW "A"



NO.	NAME	QTY
1	#109W SEALED BEARING	2
2	#106W MOTOR MOUNT	2
3	DRIVE PIPE 1 1/2 GALV PIPE <small>CONFORM TO SUIT</small>	2
4	#422 ADAPTER SLEEVE	2
5	#401 POWER HOIST	2
6	#101F 1/2" DIA. (OPTIONAL)	2
7	#112 HANGER	3
8	PREMADE CABLE W/SHACKLE TO TO SUIT	3
9	#270 SNATCH BLOCK	3
10	#25 CABLE CLAMP 3/16 (STOPPER)	3
11	#105 10" CABLE WT. W/BOLT (OPTIONAL)	3
12	1/2 x 1 1/2" A325 BOLT, NUT, L.W.R., GALV.	4
13	HDSG BOLT, NUT, L.W.R., FLT W.R., TO SUIT	1

3 POINT PICK UP 3,000# WITH  
#109W AND (2) #401

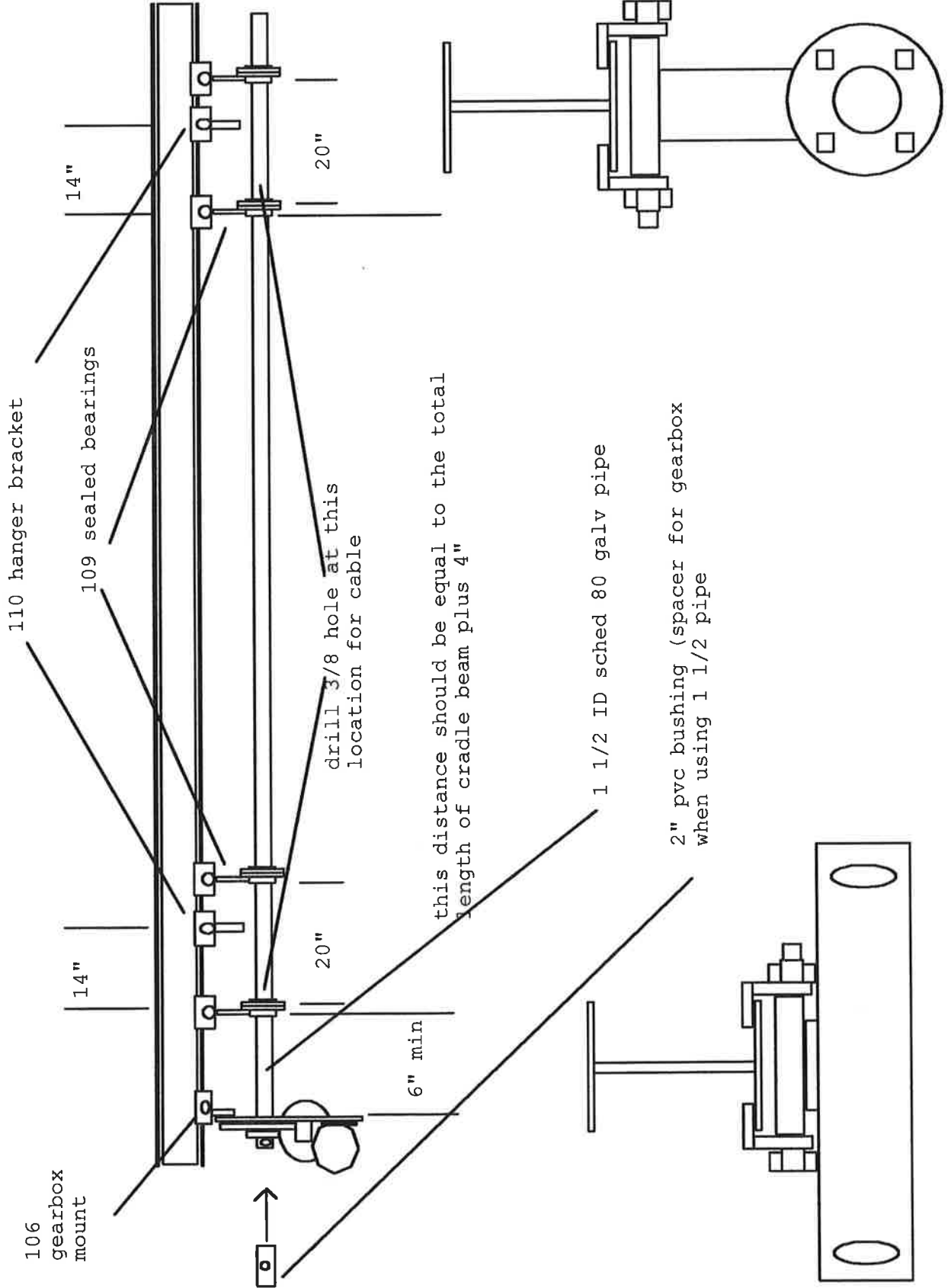
SCALE NONE

NO. I-109





# Beam layout for Lunmar lifts using 109 sealed bearings

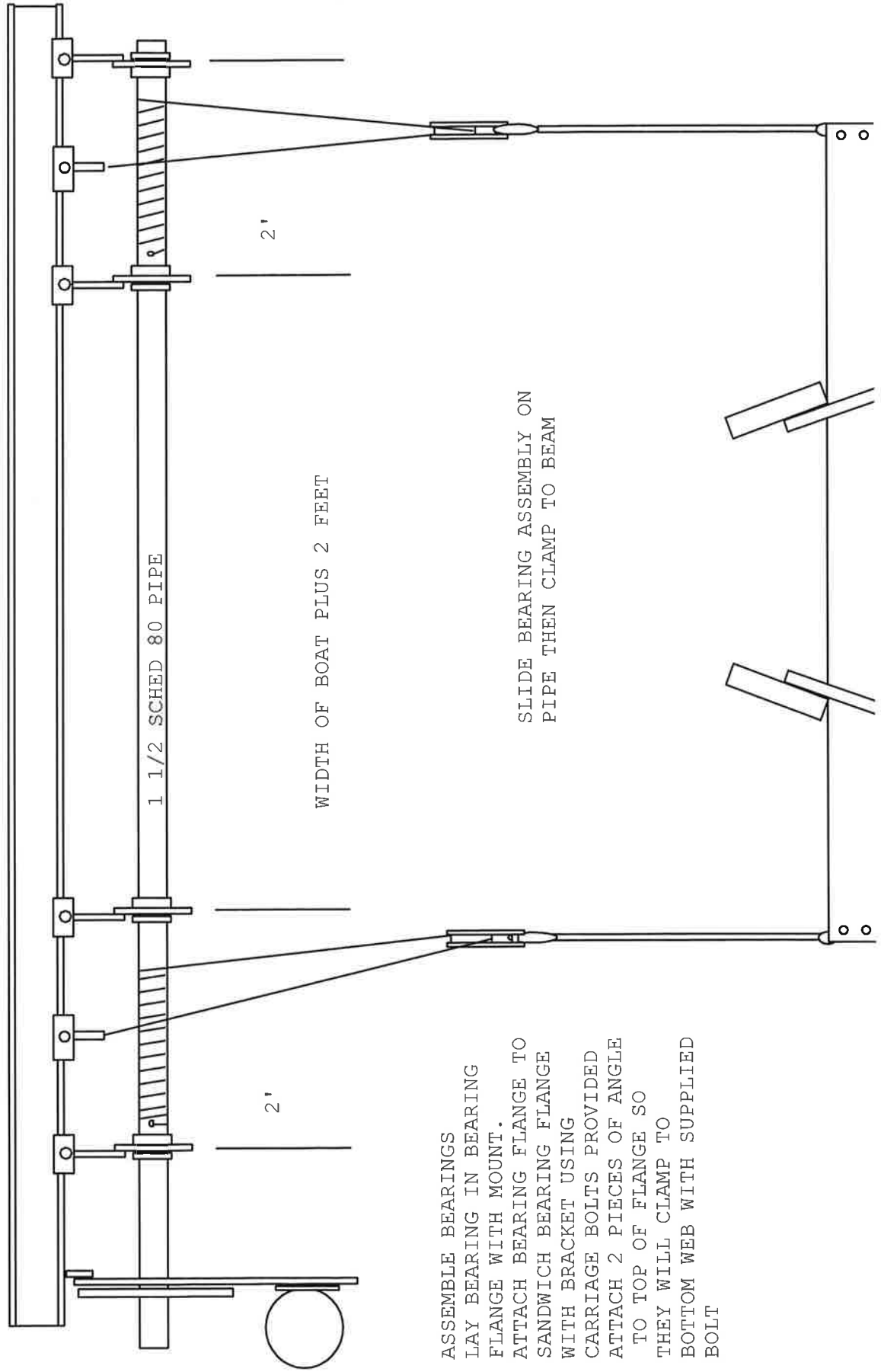


# LUNMAR BOAT LIFTS

## 337-558-7200

LIFTS USING 109 SEALED BEARINGS

ATTACH CABLE BY DRILLING 3/8" HOLE THROUGH ONE SIDE OF PIPE AND PUSH  
CABLE OUT END OF PIPE ATTACH 3/16 CLAMP AND PULL BACK INSIDE PIPE



ASSEMBLE BEARINGS  
LAY BEARING IN BEARING  
FLANGE WITH MOUNT.  
ATTACH BEARING FLANGE TO  
SANDWICH BEARING FLANGE  
WITH BRACKET USING  
CARRIAGE BOLTS PROVIDED  
ATTACH 2 PIECES OF ANGLE  
TO TOP OF FLANGE SO  
THEY WILL CLAMP TO  
BOTTOM WEB WITH SUPPLIED  
BOLT

SLIDE BEARING ASSEMBLY ON  
PIPE THEN CLAMP TO BEAM