



**Safety
Signal
Control**

Zippswitch Products
281H Skip Lane - Bay Shore - NY - 11706
Phone 631.667.0659 - 631.667.0268 Fax
www.zippswitch.com - sales@zippswitch.com

Zippswitch Sensor
Patent Nos. 7,659,485 & 8,026,454

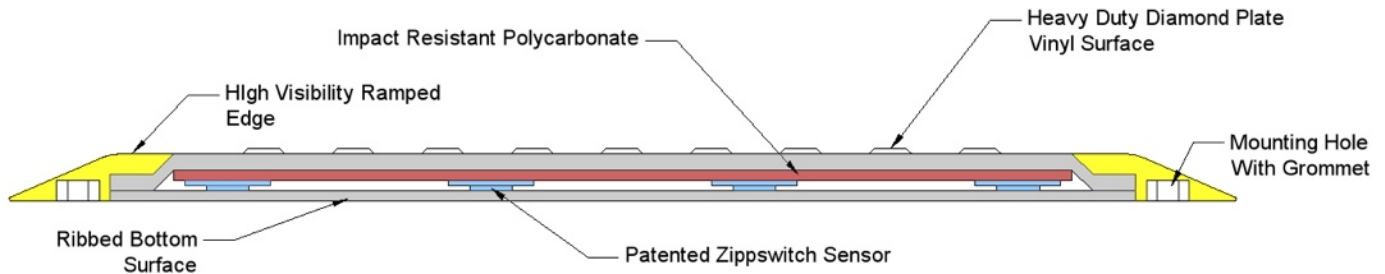
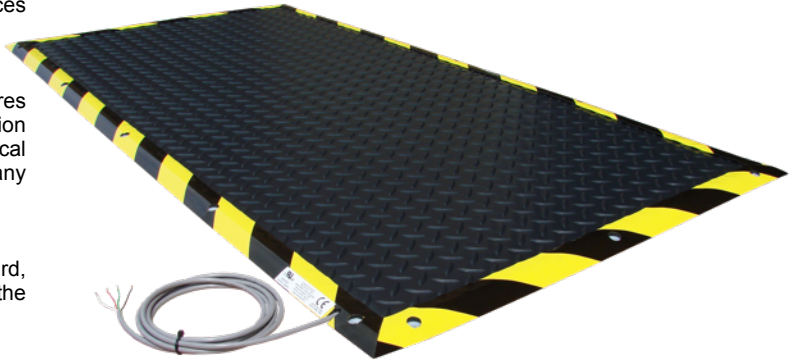


Zippswitch Safety Mat

The Zippswitch Safety Mat is designed and manufactured to meet the requirements of EN1760-1:1998 and is Certified to UL508. The Zippswitch Safety Mat utilizes high quality components arranged in a manner that maximizes the life and durability of the product when used in industrial applications.

Features

- **Heavy Duty Diamond Plate Surface**
 - Aggressive, abrasion resistant diamond pattern provides improved traction.
- **Impact Resistant Polycarbonate**
 - Impact resistant LEXAN polycarbonate is an engineered thermoplastic, characterized by outstanding mechanical properties. Acts to absorb impacts and spread the forces across the surface, protecting the Zippswitch Sensors.
- **Patented Zippswitch Sensor**
 - Designed and patented by Zippswitch Products, features include high conductivity elements, proprietary corrosion resistant electroplated conductors, excellent electrical properties, service life of 5 million activations at any given point.
- **High Visibility Ramped Edge**
 - Ramped edge is ADA compliant to reduce trip hazard, The ramped edge is "the Trim Kit" already installed at the factory.
- **Mounting Holes with Grommets**
 - For out of the box installation, installs in minutes.
- **Series Wired Zippswitch Strip Sensors**
 - Any failure mode is able to be detected including open circuits, short circuits, broken wires, cracked sensor, welded contacts.



Contact us today to discuss the benefits of using Zippswitch Products in your application



Safety Switch Mats



Zippswitch Sensing Technology



Safety & Signal
Electronic Relays



Impact & Collision Sensing
Edges & Bumpers



Transit Passenger
Signal Switches





**Safety
Signal
Control**

Zippswitch Products
 281H Skip Lane - Bay Shore - NY - 11706
 Phone 631.667.0659 - 631.667.0268 Fax
 www.zippswitch.com - sales@zippswitch.com

Zippswitch Safety Mat

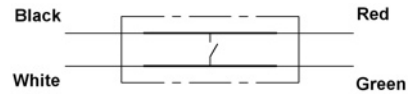
SWITCH MAT TECHNICAL SPECIFICATIONS

Switch Type: 4 Wire Pressure Sensitive Safety Mat
 Function: Normally Open, Momentary Action
 Voltage: 5 - 30 VAC or VDC
 Current: 500 milliamps max.
 Cable: One 22/4 AWG, 6 Feet
 Cable Location: Top Left, Long Side
 Activation Force: ~ 15 Lb
 Dielectric Resistance: 750 VAC - 1 minute
 Operating Temperature: 0° to 122 °F (-18 to 50 °C)
 Material Surface: Heavy Duty Diamond Plate Vinyl
 Surface Color: Black
 Edge: Ramped, w/High Visibility Yellow/Black Border
 Environmental Rating: IP67

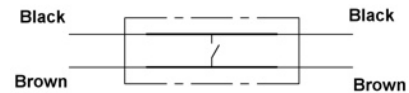
Certifications and Compliance

Zippswitch Technology is Patented 7,659,485 & 8,026,454 and other Patents Pending.
 Zippswitch Technology is Certified to the following: UL508 NKCR2 & NKCR8 file# E324107
 UL508 Standard for industrial control equipment - edition 17 - revision date 2005-07-11
 CSA C22.2 NO. 14 - industrial control equipment - edition 10 - issue date 2005-04-01
 DIN EN 1760-1:2009, Safety of machinery - pressure sensitive protective devices - part 2: general principles for the design and testing of pressure sensitive Mats and Floors.
 DIN ISO 13849-1:2009, Safety of machinery – Safety-related parts of control systems.
 ANSI/RIA R15.06-1999, Industrial Robots and Robot Systems - Safety Requirements.
 ANSI B11.19-2003, Performance Criteria for Safeguarding.

Zippswitch Sensor
 Patent Nos. 7,659,485 & 8,026,454



**Zippswitch Sensor
4 Wire / 1 Cable Schematic**



**Zippswitch Sensor
4 Wire / 2 Cable Schematic**

Custom Sizes & Shapes Available

Standard Sizes

Part Number	Width	Length	Part Number	Width	Length
ZSS-12X12	12	12	ZSS-24X96	24	96
ZSS-12X18	12	18	ZSS-36X36	36	36
ZSS-12X24	12	24	ZSS-36X48	36	48
ZSS-18X18	18	18	ZSS-36X60	36	60
ZSS-18X24	18	24	ZSS-36X72	36	72
ZSS-18X36	18	36	ZSS-36X84	36	84
ZSS-24X24	24	24	ZSS-36X96	36	96
ZSS-24X36	24	36	ZSS-48X48	48	48
ZSS-24X48	24	48	ZSS-48X60	48	60
ZSS-24X60	24	60	ZSS-48X72	48	72
ZSS-24X72	24	72	ZSS-48X84	48	84
ZSS-24X84	24	84	ZSS-48X96	48	96

Contact us today to discuss the benefits of using Zippswitch Products in your application



Safety Switch Mats



Zippswitch Sensing Technology



Safety & Signal
Electronic Relays



Impact & Collision Sensing
Edges & Bumpers



Transit Passenger
Signal Switches

