

## Inside Length

21.9 cm

21.1 cm

20.3 cm

19.5 cm

18.7 cm

17.9 cm

17.1 cm

16.3 cm

15.5 cm

14.7 cm

13.9 cm

13.1 cm

12.3 cm

11.5 cm

10.7 cm

## Months

18–24

12–18

9–12

6–9

0–6

## US EU

9 25

8 24

7 23

6 22

5 21

4 20

3 19

## US

## EU

3y

35

2.5y

34

2y

34

1.5y

33

1y

32

13.5

31

13

31

12.5

30

12

30

11.5

29

11

29

10.5

28

10

27

9.5

26

9

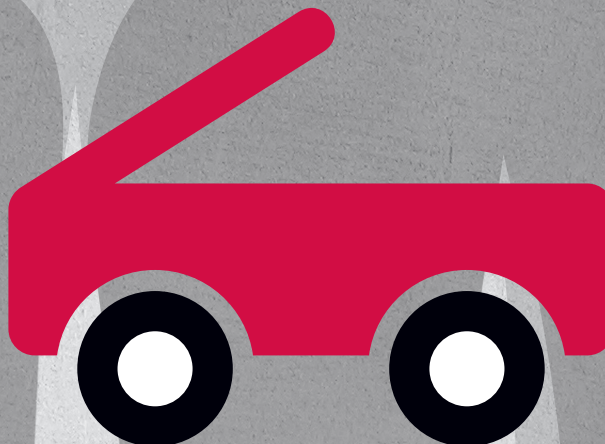
25

8.5

24

8

24



**smaller**  
by see kai run

### Crib Shoes

Available in 5 sizes for kids 0–24 months

**see kai run**

### First Walkers

Available in whole sizes 3–9, for kids ages 6 months to 3 years

**kai**

### Big Kid Shoes

Available in whole and half sizes 8–3y, for kids ages 2–8 years

### Add for Wiggle Room

Allow an extra 1/2 to one centimeter when selecting a size, more if the child will wear socks with the shoes.

### Round Up

If your child's foot falls in between sizes, round up. The extra room won't be there for long.

### Measure Often

Children's feet grow quickly. Measure at least every 2 months during the first year, and every 3 months from 1–8 years old.