

YATES

MOTLOID

CHICAGO, IL USA www.yates-motloid.com

DENTAL PRODUCTS



ACRYLICS*

Coldpac Tooth Acrylic

Temporary crown and bridge material. For true tooth shades on veneers, jacket crowns and bridges. Density ensures hardness, fracture resistance and workability. Both attractive and functional. Available in kits as well as individual Nu-Hue and Vita shades.

Powder available in 1, 2, 4, 8 or 16 oz.

Liquid available in 1, 2, 4, 8, 16 or 32 oz.

Dental Office kit contains eight 1 oz. powders and two 1 oz. liquids

Dental Lab kit contains eight 2 oz. powders and two 2 oz. liquids.

Custom design kits available on request.

Coldpac acrylic resin rated in the top two provisional restorative materials. Coldpac had significantly less marginal discrepancy compared with Snap[®], Protemp[™], Trim[®], Triad[®] and Tru-kit materials.

- Study performed by Jack H Koumjian, D.D.S., M.S.D. and John B. Holmes D.D.S., M.Ed. University of California, San Francisco, School of Dentistry, San Francisco, Calif.
- Published in the Journal of Prosthetic Dentistry, June 1990, Volume 63, Number 6



Coldpac Ortho Resin

Self-cure low-flow resin. Ideal for orthodontic appliances and retainers. Well suited for pour, pack, or dusting technique. Powder available in clear, translucent pink and translucent blue.

Powder available in 4, 16 oz. or 6lb. Kits available: 4oz. powder/4oz. liquid

Liquid available in 4, 8 or 32 oz.

16oz. powder/8oz. liquid

6lb powder/1 ½ quarts liquid

Mix liquid monomer with clear powder for brighter colors: blues, greens, purples, reds, etc. Available for custom bulk orders.



Miracrlyl Plus Denture Base Acrylic

Supplied with cross-linked heat-cure monomer. Available in the following shades: Plain (clear, pink); Granular (orange-pink); Fibered (mylon dark/light).

Powder available in 16, 32oz. or 6lb. Kits available: 16oz. powder/8oz. liquid

Liquid available in 8, 16 or 32oz.

32oz. powder/16oz. liquid

6lb. powder/1 ½ quarts liquid



Coldpac Repair Acrylic for Dentures

For replacing broken teeth, mending cracked and broken dentures, adding teeth or clasps to partials, relining, rebasing and post-damming.

Powder available in 16, 32oz. and 6lb. Kits available: 16oz. powder/8oz. liquid

Liquid available in 8, 16 and 32oz

32oz. powder/16oz. liquid

6lb. powder/1 ½ quarts liquid

BUFFING & BURNISHING

Moldent Buffing Agent

Red for acrylic and gold. Eliminates fine scratches and gives the highest lustre to acrylics and precious metals.

41940 Moldent Buffing Agent



Use Chrometal #1 & #2 Together for best results!

Chrometal Agent #1

Black, pre-buff for chromium. Removes scratches and prepares for final shine on alloys and precious metals.

41941 Chrometal #1



Chrometal Agent #2

Produces a beautiful lustre on all metals, especially chrome-cobalt and gold.

41942 Chrometal #2



Dual-Lustre Polishing Medium

Finishes and polishes resin and restores the original lustre to chrome and gold partials.

41943 Dual-Lustre

Rapid-Glaze Diamond Porcelain Polishing Paste

Cuts and polishes to a mirror-like glaze. Eliminates re-sizing after adjustments. Non-toxic, water soluble. Works on all metals and microfilled composites.



69302 Rapid-Glaze, 2 gram syringe 69305 Rapid-Glaze, 5 gram syringe

SEPARATING MEDIA



Plasticlear "Wet & Stretch"

For final packing. Ideal for all types of plastic dentures. Peels off plastic in one piece. Eliminates the need for tinfoil. No laquering or cleaning necessary.

45420 Plasticlear, 4"x 4" (500)

Plastipac

For trial packing. Separates cast from dentures. Stretches when pulled, yet leaves no wrinkles. Eliminates tinfoiling and laquering.

45515 Plastipac, 5"x 5" (1000)

45520 Plastipac, 4"x 4" (1000)



Elasto-Vest

For use on acrylic, porcelain and composite teeth. Helps in the "break-out" of your acrylic denture work. Elasto-Vest coats, protects and safeguards during the devesting process.

46520 Elasto-Vest, 20 oz. Kit with Activator

46521 Elasto-Vest, 300 gm. squeeze bottle Kit with Activator

BURS & DRILLS

Carbide Lab Burs

For trimming, carving and finishing acrylic dentures and chrome-cobalt cases, these carbide burs provide the ultimate in toughness and durability. Precision ground flutes are razor sharp and assure resistance to gumming and clogging. Recommended operating speed: 5000 rpm. Nine standard shapes, all on 3/32" x 1 1/2" steel shanks.



50021 Barrel



50022 Cone



50023 Egg



50024 Tapered



50025 Flame



50026 Cylinder



50027 Inverted Cone



50028 Pear



50029 Round

Carbide Fissure Burs

Made of solid carbide for excellence in cutting (rather than shaping), these fissure burs offer efficiency and long life. May be used at either high or low speed and are suitable for both acrylic and metal. Nine styles available to accommodate a wide variety of uses.



50001 Large Cylinder



50002 Small Cylinder



50003 Large Barrel



50004 Small Barrel



50005 Round

FG-HP Converter

Standardize friction grip and diamonds. Avoid stocking FG and HP and eliminate high cost of HP diamonds.



6800 FG-HP Converter



50006 Egg



50008 Tapered



50009 Flame



50010 Inverted Cone

Carbide Drills

Compatible with Pindex and other die fabricating systems. Drills measure 6mm head length, 3mm shank diameter and 34.5 mm overall length.

50050 Carbide Drills, Set of 3



ACRYLIC TRIMMING BURS

Tungsten Steel Burs

- Won't clog or gum up
- Resists heat
- "Razor sharp" long lasting edge
- Won't bend
- Heavy-duty, lasts and lasts

Great for podiatry, prosthetics, orthotics, ear molds, model making, hobby work and more!

SAVES TIME AND MONEY!

Comes in five shapes:

- | | | | |
|---|--|----------------------|-------------------|
| 41850 Round, Dozen | 41830 Flame 1, Dozen | 41840 Flame 2, Dozen | 41870 Pear, Dozen |
| 41860 Bud, Dozen | 41810 1 Dozen Assortment: Flame 1, Flame 2 (3 ea); Round, Bud, Pear (2 ea) | | |
| 41820 Six-Set - One of each shape and extra flame 2 | | | |

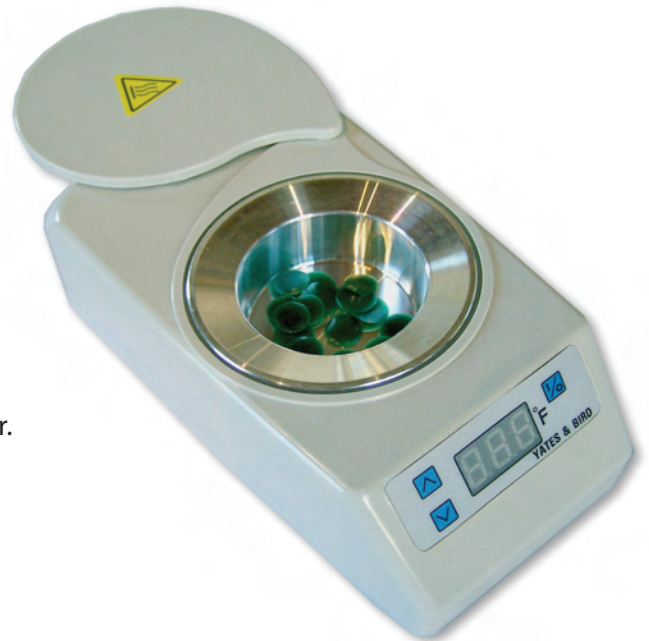


WAXES & WAX ACCESSORIES

Digital Wax Pot

Versatile temperature range: 50 °-115 ° (± 1 °C) / 122 °-239 ° F. Efficient; quickly reaches and maintains desired temperature. Accurate; makes perfect copings every time. Compact; just 5 3/4" x 3 1/2" x 1 7/8". Inner dimensions: 3/4" deep, 1 3/4" diameter.

- | | |
|-----------|-----------------------|
| 47715 | Digital Wax Pot, 110v |
| 47715-220 | Digital Wax Pot, 220v |



Safety Solvent

Removes tar, oil, grease, ink, contact cement, adhesive, tape, cement and much more. Leaves no residue.

- | | |
|-------|------------------------|
| 48521 | Safety Solvent, 8 oz. |
| 48522 | Safety Solvent, Quart |
| 48523 | Safety Solvent, Gallon |

Waxsol

Removes wax and prepares utensils for lab use. Wipes clean, leaves no residue.

- | | |
|-------|----------------|
| 48511 | Waxsol, 1 Pint |
| 48512 | Waxsol, Quart |
| 48513 | Waxsol, Gallon |

"All-Season" Baseplate Wax

Only waxes in their purest form are used. The color of "All-Season" exactly simulates flesh tones (so important for patient's peace of mind during try-in). Working qualities are exceptional. Ideal softening temperature of 150 °F.

47015 "All-Season" Wax, 3" x 6" Sheets, 5 lb.



Red Refined Wax

All-purpose wax for boxing impressions, bite registrations and general waxing-up techniques. Offers dependable uniformity. Once set, not rigid. Low softening temperature of 140 °F.

47315 Red Refined Wax, 3" x 6" Sheets, 5lb. box



"Set-Rite" Set-Up Wax

Perfect for set-ups and try-ins. Excellent workability and long working time. Holds teeth perfectly in position. Sets hard without brittleness. Will not flake when heated and rolled: carves easily and smoothly without drag. Mold always boils clean - no pigment remains.

47001 "Set-Rite" Wax, 3" x 6" Sheets, 1 lb.

47005 "Set-Rite" Wax, 3" x 6" Sheets, 5 lb.



Rijform Bite Rims

Unique pink ridge-formed bite rim saves time, wax and labor. Insures the utmost accuracy in bite registration. Easily shaped to conform to the dental arch. No waste. Shape to the model. Cut off and use exactly what you need.

47415 Rijform Bite Rims, Sticks, 9" x ½" x ½", 4 lb



Green Dipping Wax

Quality tough, durable green dipping wax produces well adapted, even thickness, one-dip wax copings. Formulated to provide clean burnout and optimal hygroscopic expansion. Economical, convenient, quick melting, 3/8" diameter flakes allow you to use only what you need. Melting temperature 71-76 °C (160-169 °F).

47705 Green Dipping Wax, 8 oz.



"Sticktite" Wax

Clean melting and burnout assured. No distortion, won't give or bend; highly tenacious. Ideal for attaching patterns to sprue assemblies, joining broken dentures, construction of bridges and bent wire work. Available in convenient chunks. Yellow only.

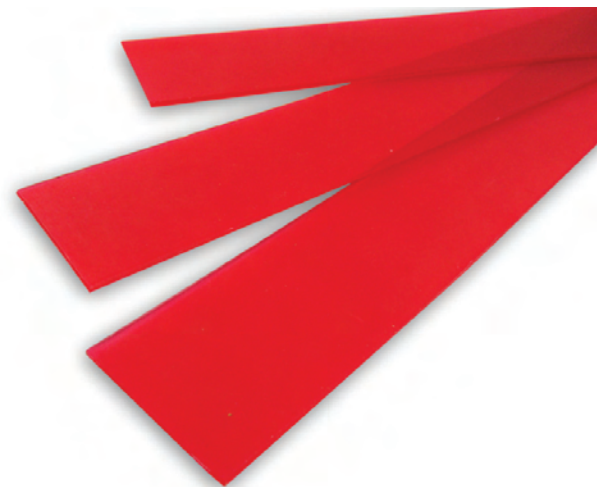
47610 "Sticktite" Wax, Chunks, 1 lb.

47615 "Sticktite" Wax, Chunks, 5 lb.

Boxing Wax Strips

Soft, tacky red wax is ideal for boxing-in impressions. Strips will adhere to themselves or most surfaces without the use of heat. Boxing strips are 1/16" thick x 1 1/2" wide x 12" long.

47921 Boxing Wax Strips, 1 lb.



Utility Wax

Easily shaped, soft rope utility wax. Well suited for building up and post-damming purposes. Pliable at room temperature. Also used to fill sprue bases and small imperfections in pattern surfaces. Each rope is 3/16" diameter x 12" long.

47911 Red Rope Utility Wax, 1 lb.

47912 White Rope Utility Wax, 1 lb.

**Boxing and Utility Waxes work even better together!
Position Utility Wax below the peripheral border of the impression.**

INSTRUMENTS

Waxirons

Cast of cobalt alloy. Has both concave and convex surface for smoothing. Set contains small and large with two extra handles.

- 49100 Waxiron, Complete Set
- 49101 Waxiron, Small with Handle
- 49102 Waxiron, Large with Handle
- 49103 Handle Only



Wax Carvers and Spatulas



49004 LeCron Carver



49005 No. 1 Ward Carver



49006 No. 2 Ward Carver



49007 Roach Carver



49008 No. 7 Wax Spatula



49009 No. 31 Gritman Wax Spatula



49010 No 7 1/2 Wax Spatula



49011 No. 24 Cement Spatula, Flexible Blade



49012 No. 24A Cement Spatula, Rigid Blade

Tweezers

No. 17 Flagg pliers. Stainless steel.



43710 Tweezers

Aker's Knife

Replaceable cone socket knife and spoon. Stainless steel.



- 43310 Aker's Knife Complete
- 43311 Blade Replacement
- 43312 Spoon Replacement
- 43313 Handle Replacement

Single End Pick

Carve or chisel. 5" long with drill rod pick blade.



- 43410 Pick with Blade
- 43411 Blade Only, Left, Dozen
- 43412 Blade Only, Right, Dozen



Pin-Pal Dowel End Protectors

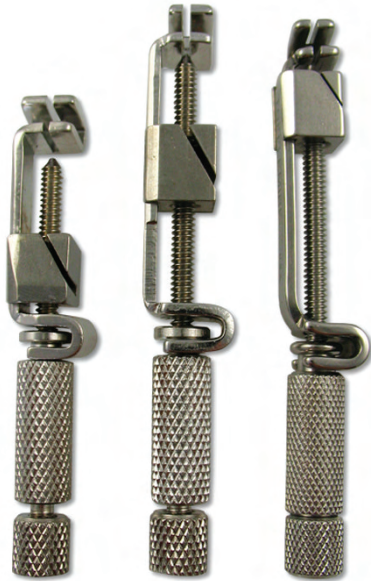
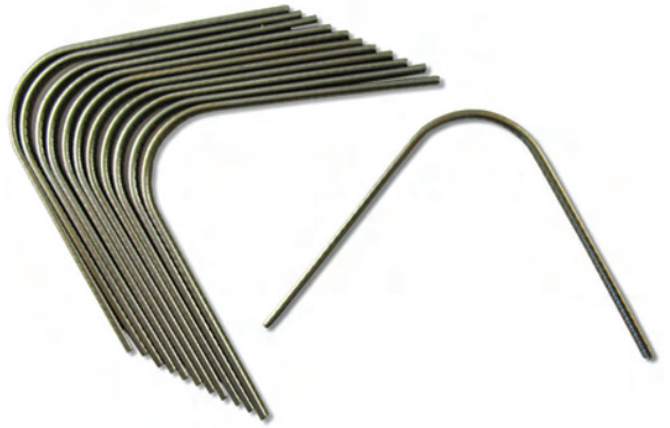
Flexible rubber dowel end protectors simplify removal of your preparation; no mess or damage. Simply slip Pin-Pals onto all your dowel pins and save time and effort. No searching for dowel pin tips, no drilling out stone.

46220 Pin-Pal Dowel End Protectors, 1000

Universal Plate Strengtheners

Pre-formed, stainless steel plate strengtheners. Designed with a raised pattern to ensure maximum retention.

46250 Universal Plate Strengtheners, Dozen



Tofflemire Retainers

Can be used with any width band. Locks securely and releases instantly. Adjusts easily. Stainless steel.

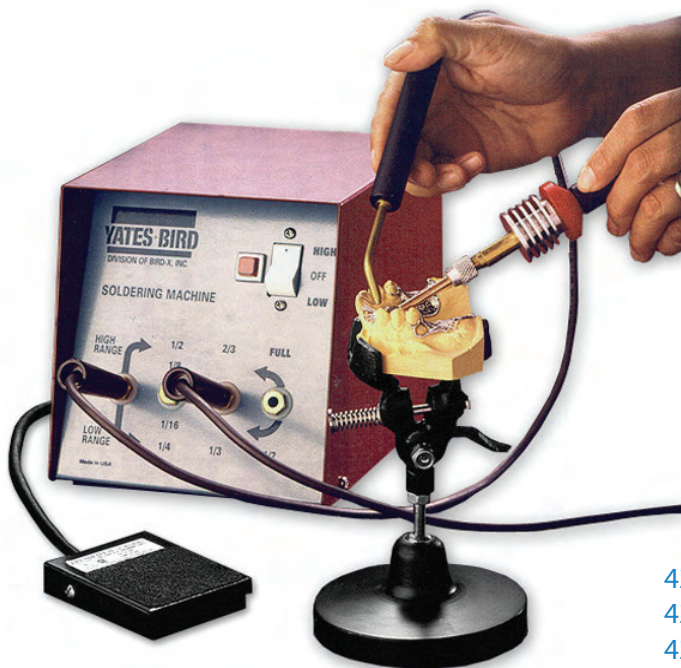
- 51001 Tofflemire Retainer, Universal
- 51002 Tofflemire Retainer, Adult
- 51003 Tofflemire Retainer, Child

Tofflemire Matrix Bands

Available in two thicknesses and in four styles per thickness. One dozen per package.

- | | |
|--------|--------|
| .0015" | .0020" |
| 51101 | 51201 |
| 51102 | 51202 |
| 51103 | 51203 |
| 51113 | 51213 |





ELECTRIC SOLDERING MACHINE

Make repairs and additions instantly without the inconvenience, delay and danger of using a torch. Seven heat settings accommodate virtually every soldering need. Provides quick esthetic and functional repair that can save a costly remake.

Quick heat has many advantages:

- Solder clasps, bars and rests on the model without distortion
- Repair partials without removing acrylic or teeth
- Solder without investing joints
- Fabricate and solder retainers, space maintainers and other orthodontic wire appliances
- Repair pin holes in crowns
- Solder precision attachments
- Assemble and repair ceramic metal bridges

- 42810 Soldering Machine Complete with Foot Switch and Model Holder
- 42820 Soldering Machine with Foot Switch
- 42830 Soldering Machine with Model Holder
- 42840 Soldering Machine Only

Foot Control Switch

Speeds up and simplifies production. Position soldering electrodes while current is off; activate the current with the switch and solder. Use it to operate other 115 volt AC appliances "hands free!"

- 42710 Foot Control Switch



Model Holder

Adjustable clamp and rest hold model in place. Ball and socket joint permits tilting to any position.

- 42890 Model Holder



Hot Stop

Asbestos-free. Hold parts in place while soldering. Protect porcelain and acrylic from heat. Shapes like putty and will not burn, crack, melt, swell or interrupt alignment. Can be used multiple times.

- 42851 Hot Stop, 8 oz.

Miraflex

Flows at 900°F. It protects metal from oxidation while heating and also assists in the flow of solder. Adaptable to all soldering on gold, silver and stainless steel. Also recommended for use with blowpipe or Bunsen burner.

- 42880 Miraflex, 2oz.

Soldering Accessories

- 42852 Adaptor for 3/16" Carbon & 6 Points
- 42853 Carbon Electrode Cord
- 42854 Ground Electrode Cord
- 42859 Brass Tip for Ground Cord
- 42860 Carbon Points 2" x 5/16" (6)
- 42861 Carbon Points 3" x 5/16" (6)
- 42863 Carbon Points 2" x 3/16" (6)

Comfort-Cool Carbon Electrode Cord

The double shell construction and aluminum finned heat dissipaters eliminate heat build-up.

42855 Comfort-Cool Carbon Electrode



Heavy-Duty Ground Electrode Cord

Allows direct attachment to large appliances or to a holding fixture for high heat operations. Solid copper clamp facilitates one-hand soldering and provides the best possible current conduction.

42856 Heavy-Duty Ground Electrode

"5-Star" Solder

General purpose solder for chromium alloy, stainless steel and gold. Strong, quick-flowing rapid build-up, always uniform. In yellow-gold color. Especially indicated for use where the soldered areas are to be covered by denture material.

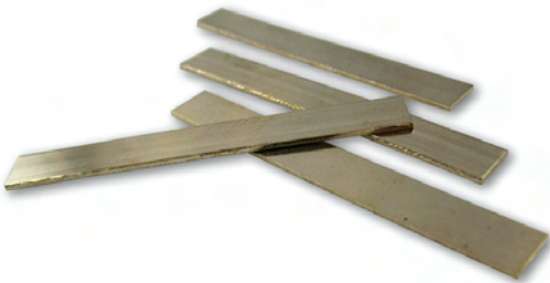
42870 "5-Star" Solder, 1 oz.



Perfec-Flo Solder

Triple thickness reduces electrical resistance and provides uniform heat distribution; will not overheat, ball up or oxidize. Guarantees deep penetration, precise control and exceptionally high strength.

42875 Perfec-Flo Solder, 6 DWT



Cerami-Flo Solder

Specifically formulated for the electric soldering of ceramic crown and bridge metals. Supplied in 1/16" rods.

42877 Cerami-Flo Solder, 10 DWT



ORTHO WELDER

The "All In One Workhorse" THREE MACHINES IN ONE:

- **Ortho Welder**
- **Electric Solderer**
- **Wire Annealer**

Full feature, heavy-duty one time purchase; compact, functional, easy to use and maintenance-free.

Use as a welder for wire, brackets or bands; as a stress reliever for wire or electric soldering machine for partials and C&B.

Features

- Ergonomic controls
- All-metal construction - durable and attractive
- 3 heat settings
- 9 pulse time settings
- 12 welding tip combinations
- Remote weld/solder leads with tips
- Brass posts for annealing and stress relieving

Comes with foot switch, solder, flux, non-asbestos heat sink, brass tip and carbon point for soldering, copper tips, brass posts, dual-purpose cords for soldering and remote welding and two copper electrodes for welding.

42750 Ortho Welder, 110v

42752 Ortho Welder, 220v

Replacement Parts

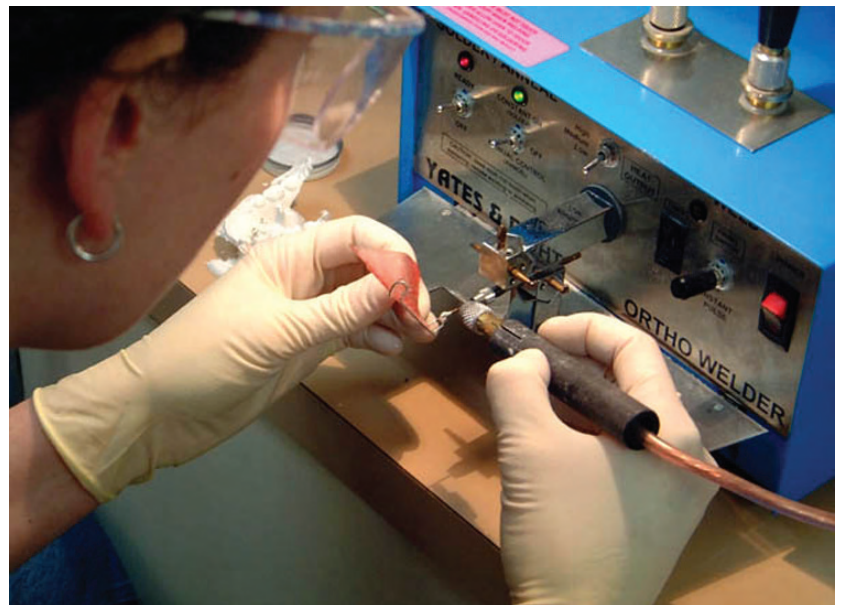
42755 Footswitch

42756 Wire Gauge Drill Chuck

42782 Copper Welding Tips for Jaws (7)

42782-A Copper Welding Tips for Cords (2)

42783 Remote Cords



GOLD PLATER

Give the look and properties of gold without the high cost

Plate dentures, gingival collars, crowns, facings, clasps, copings, dummy pontics, saddles, backings, buccal arms, retention posts, Maryland bridges and more. Selectively plates metal, won't plate, distort or discolor acrylic or porcelain.

Benefits of plating include:

- Isolating and sealing non-precious metals
- Eliminate tissue sensitivity and other reactions/discoloration
- Esthetic quality

Material cost is less than \$0.45 per square inch and is quick and easy. Apply 5 to 7 micro-inches per minute; will not affect fit or finish. Automatic timer and "gang" plating allows you to plate up to 4 items at once.

The Gold Plater uses safe, low voltage. It's short-circuitproof and shockproof and comes with all necessary accessories: four solution containers and covers, stainless steel brush plating tool, "Gang" Plating Bar and 12 oz of "20K" Gold Solution.

- 42910 Gold Plater, Complete Unit
- 42920 Gold Plater, Complete Unit w/Stand
- 42940 Gold Plater Stand



Tin Plater

Compact unit plates pure tin (.999 fine) to the inside of crowns, bridges, Maryland bridges and inlays. Increases retention up to 250% of a restoration when using glassionomer cements and Bis-GMA resins. Recommended for precious and semi-precious metals. Dimensions: 7" x 3 1/2" x 4 1/2". 115vAC.

- 42951 Tin Plater Complete
- 42974 Tin Plating Solution, 12 oz.
- 42995 Replacement Tin Anode with Cup
- 42950 Tin Plater Accessory Kit (Accessory Kit for use with Gold Plater)



Plating Accessories

- 42980 Electro-Clean Powder, 16 oz.
- 42990 "Gang" Plating Bar
- 42971 "20K" Gold Solution, 12 oz.
- 42960 Solution Containers, set of 4
- 42953 Dip (red) Electrode Cord Set
- 42954 Brush/Clean (black) Electrode Cord Set



Heavy-Duty Vibrator

3600 vibrations per minute. Eliminate bubbles and voids in molds. Durable: does not cause heat build up or damage. "No moving parts" or lubrication required with minimal part replacement. Large 8 1/2" x 5 1/2" surface fits several cases.

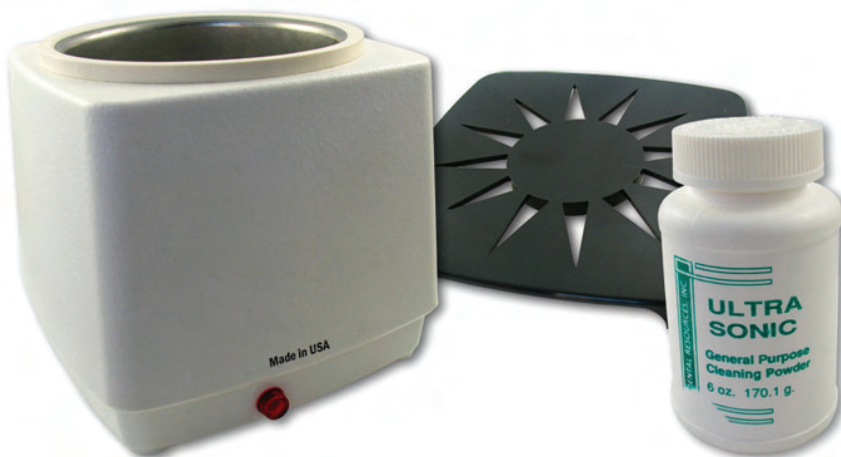
- 42610 Heavy-Duty Vibrator, 220v units available
- 42612 Replacement Rubber Top
- 42613 Replacement On/Off Switch
- 42619 Replacement Rheostat
- 42630 Replacement Metal Top

Ultrasonic Cleaner

Cleans any object that can be immersed in liquid. Compact (5" cube) but large enough with its 3 1/2" diameter x 2" deep tank to accommodate many lab items. Instantly cleans any dental appliance.

Made in the U.S.A.

- 42342 Ultrasonic Cleaner, Model 42



MEASURING DEVICES

Precision Calipers

Stainless steel, easy to read 1/10 mm dual-sided calibrations guarantee accuracy.

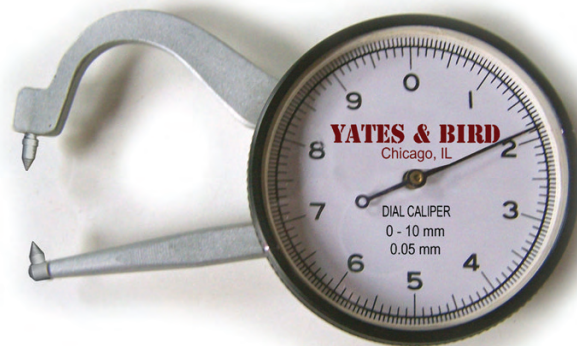
- 46230 Precision Caliper for Metal
- 46231 Precision Caliper for Wax



Dial Caliper

Accurate to .05 mm and ranges from 0-10 mm. Made of stainless steel.

- 46235 Dial Caliper



Yates Motloid

Yates Motloid has been providing solutions to the dental lab market segment for over 50 years. Originally, the well-known and trusted suppliers Yates Manufacturing and The Motloid Company joined Bird-X, Inc. as Yates & Bird (dental lab supplies) and Motloid (products for dental offices). In 2009 these divisions merged to form Yates Motloid. Fifty plus years of providing quality products to our worldwide customer base has helped create our reputation for world class quality and service. We have a solution-focused team of professionals dedicated to creating a mutually beneficial partnership with our customers and suppliers. All products have been developed, manufactured, tested, approved and used by many of the leading dental schools and labs throughout the world.

Yates Motloid Quality System is ISO 9001 and ISO 13485 certified

The Yates Motloid Quality System creates a framework for clearly defining the control of material, processes and verification activities, thus providing our customers with confidence that the design and assembly of products is performed in a well-defined and controlled environment. This quality system contains, but is not limited to, all requirements of the International Standards Organization. Yates Motloid Quality System also addresses the needs and requirements of other regulatory agencies, such as the FDA Regulations known as QSR's, cGMP's, CFR's, Canadian CMD/CAS ISO 13485-2003, European Directives, Health Canada's Medical Device Regulation 1998, Health Canada Adverse Incident Requirements, OSHA and US DOT, as applicable.

Warranty & Returns

Merchandise is guaranteed against defects in materials and workmanship for 90 days and will be replaced or repaired, at no charge, at our option. We will correct our shipping and packing errors, at no charge, if informed within 30 days. In both of these cases, please call for details and authorization. If you wish to return items for other reasons, please call. Returns are subject to approval. If approved, return must be within 90 days, items must be shipped prepaid, and order is subject to at least 20% restocking fee.

Product Index

Acrylics:	Page 1	Measuring Devices:	Page 13
Buffing & Burnishing:	Page 2	Plate Strengtheners:	Page 8
Burs & Drills:	Pages 3-4	Separating Media:	Page 2
Equipment/Machines:	Pages 9-13	Tofflemire Bands & Retainers	Page 8
Instruments:	Page 7	Waxes & Accessories:	Pages 4-6



www.yatesmotloid.com
Chicago, Illinois

YATES

MOTLOID

CHICAGO, IL USA www.yates-motloid.com

DENTAL PRODUCTS

