

If your CBR-101 is not heating properly and you have a multimeter handy, there are a few simple tests you can run to help diagnose the problem. For all of these tests, you'll need to have the cover removed.

I. Confirm that you have proper voltage running to the heating element from the power supply board.

1. Disconnect the power leads to the roaster's heater element (see image in Test II, Step 3 if you're not sure what these leads look like).
2. Set your multimeter to read voltage. (Some multimeters require that you specify AC or DC voltage. In this case, you'll want to select AC.)

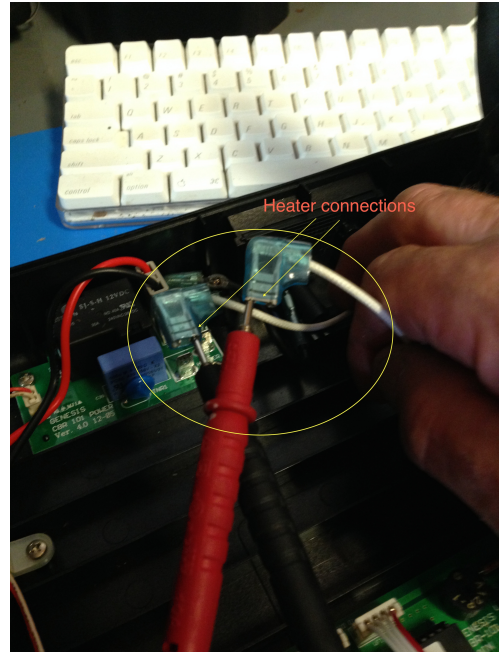


3. Start the roaster and connect both probes on the multimeter to the CBR-101 Power PCB. (Note: The blow fan should be running. If it is not, this could indicate a different problem.)
4. Meter should read about 120V.



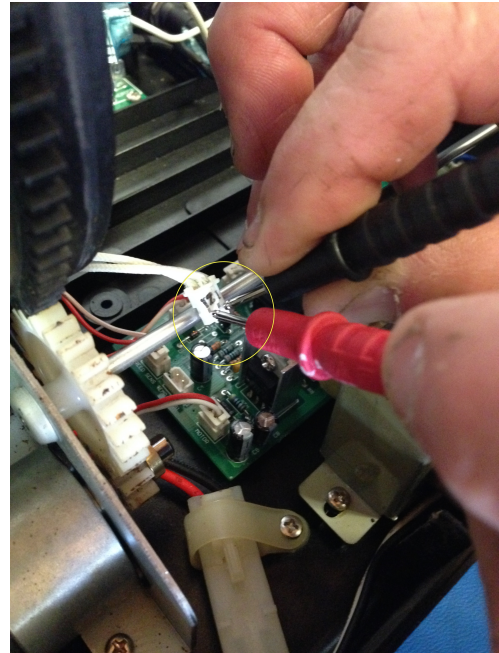
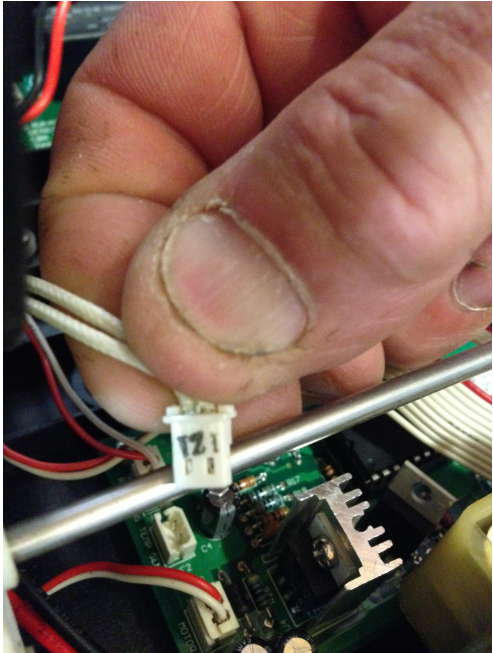
II. Confirm that the resistance from the heating element is between 10 and 11 ohms.

1. Unplug the roaster!
2. Set the multimeter to read Ohms.
3. Connect both multimeter probes to the heater leads, and ensure that the reading is between 10-11 ohms.



III. Confirm that the resistance from the inlet and outlet heat sensors is between 220-380 kilo ohms (be careful, the pins on the lead are fragile)

1. Unplug the roaster!
2. Set the multimeter to read Ohms.
3. Connect the probes to both of the tiny metal pieces on the inlet damper temperature sensor.



4. Ensure that the multimeter reads between 220-380 kOhms.
5. Repeat for the outlet damper temperature sensor.

