

# Z-View

## HMI - Easy to use

### ■ Z-View, the Easy Way.

Z-View offers you a complete SCADA solution, whether you are a process engineer, systems integrator, or operator. Z-View features unparalleled easy to use, advanced graphics capabilities and zero maintenance data logging, together with a proven high-performance communications engine to deliver a affordable, superior SCADA experience.

### ■ Simple to Setup

Z-View projects do not require hours of work to setup. All definitions, such as aliases, alarms, or trend variables are done in simple to use tables, allowing you to export and import data, search and replace values, sort through the definitions or make global changes using the Express Edit feature.

### ■ Easy to Use

Z-View was designed from the ground up to facilitate all tasks involved in creating and designing projects. Z-View always stays responsive, even while performing lengthy tasks such as fetching records or searching for data, and the streamlined, clean interface helps you stay focused on your work. Infact, Z-View is so easy to use that most of our users have never bothered to look at the documentation.

### ■ Integrated Development and Operation

Z-View is an integrated development and operation environment. Switching between designer mode and operator mode in screens is a matter of a single keystroke. Definitions are always accessible and can be changed without restarting Z-View. Access to the design features can be easily hidden to prevent operators from making changes to the project.

### ■ Hassle-Free Project Management

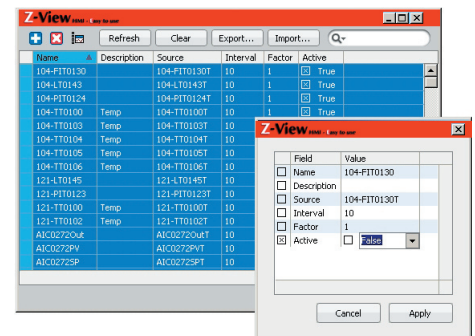
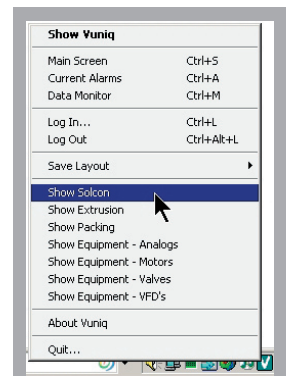
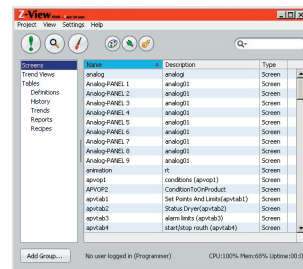
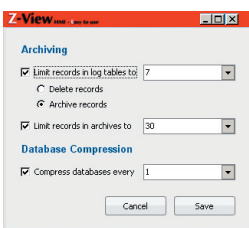
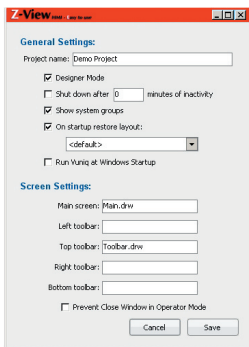
Z-View provides a simple and easy way to manage even large projects. The project window includes integrated search, making it easy to find a specific screen or table among hundreds of items. In addition, items can be assigned to user-defined groups, each with its own window layout, that can be recalled with a mouse-click.

### ■ Zero Maintenance Database Tables

Z-View can log data such as reports, trends, or other history to an external database system via ODBC, or to local tables using its internal fast and reliable SQLite database engine, and in addition lets you export data in csv (Excel) format. Database setup is completely automatic, relieving users of the complications of setting up files, user accounts or queries. Z-View automatically maintains data integrity and the customizable data archiver feature moves old records to separate archives, thus preventing the hard disk from becoming fragmented or full. All this is achieved without any user intervention whatsoever.

### ■ An Affordable and Scalable Solution

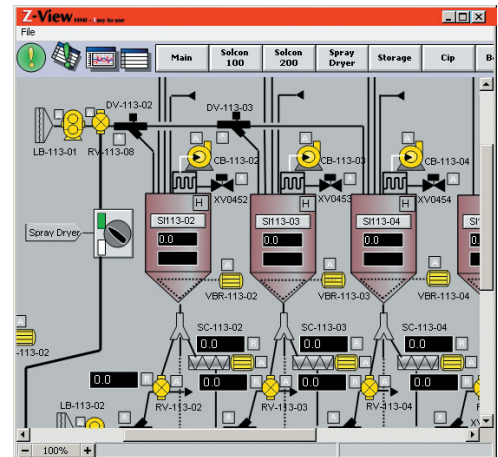
Z-View can be suited to different needs and can grow with your plant. Z-View does not limit, either by license or by technology, any aspect of your project. It has been field-tested and proven in installations using tens of thousands of I/O points, hundreds of reports and trends, and thousands of alarms. The license you buy gives you unlimited power, and each system includes all development tools you need, just a mouse-click away.



## What Makes Z-View 5.0 Different?

Z-View 5.0 continues to build on the success of previous versions:

- ⊙ A single program takes care of all SCADA functions. There's no need to get stuck in your computer's Start Menu, helplessly deciphering meaningless icons. Just call up the project window and go from there.
- ⊙ Take your project with you on a Disk on Key (DOK). Use Z-View To Go to run your project on any computer on your intranet. No need to install files.
- ⊙ Z-View is clean. The entire Z-View installation takes up less than 20MB of harddisk space, and Z-View does not install DLLs or device drivers in your operating system.
- ⊙ ODBC connectivity lets you log data to any ODBC-compliant

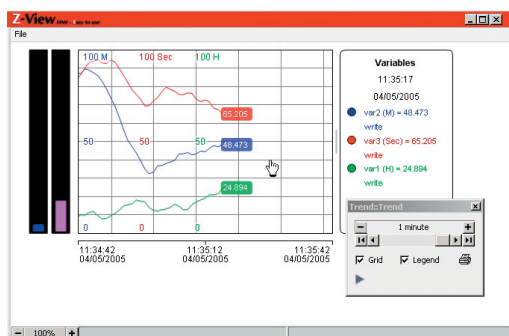


## High Quality Operator Screens

Vuniqu offers the visual quality to be expected from today's PC's. Based on high-quality vector-graphics, Vuniqu screens achieve visual impact and are also easy on the eyes. Line-smoothing, transparency, smooth gradients and true zooming let you incorporate hundreds of elements and labels in a single screen while maintaining legibility. Layer support lets you separate different kinds of elements into separate graphic layers, each of which can be hidden or disabled.

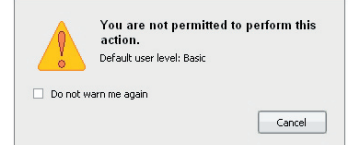
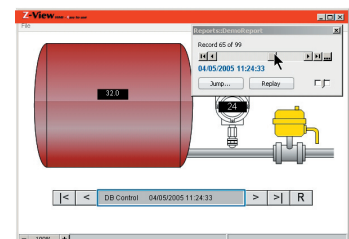
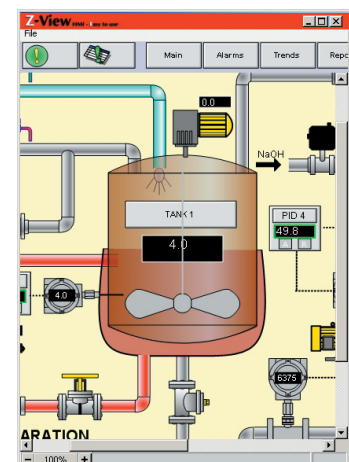
## Live Graphics

In Z-View you can link real-time values to any element attribute to create stunning animations, dynamically changing colors, placement, rotation, visibility, text, level-fill or any other attribute. You can also select actions to perform upon mouse-clicks, such as changing values, switching screens or loading floating screens, or running custom scripts. In addition, a value inspector allows an engineer to quickly inspect and change any of the values displayed on-screen.



## Total Integration

With Z-View it's easy to integrate real-time and historical values in a single user interface using operator screens. Beyond the normal way of displaying tables, alarms or charts, you can also visualize this data in operator screens. Report data can be replayed in screens, instead of real-time values, thus providing an easy way to audit processes. Charts can be integrated into operator screens for displaying real-time or historical trends. Even recipes can be recalled, downloaded or uploaded through operator screens for a seamless user experience. Current alarms can also be displayed in operator screens.



## Secure Operation

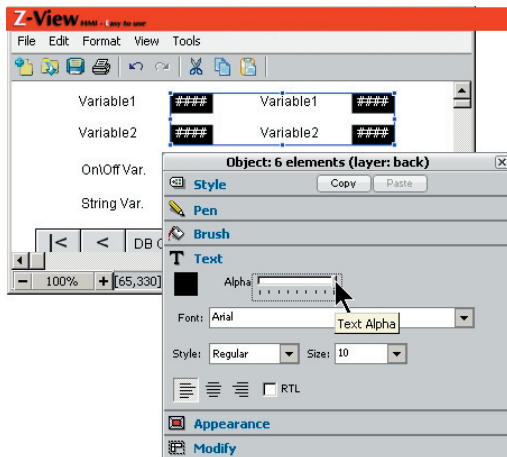
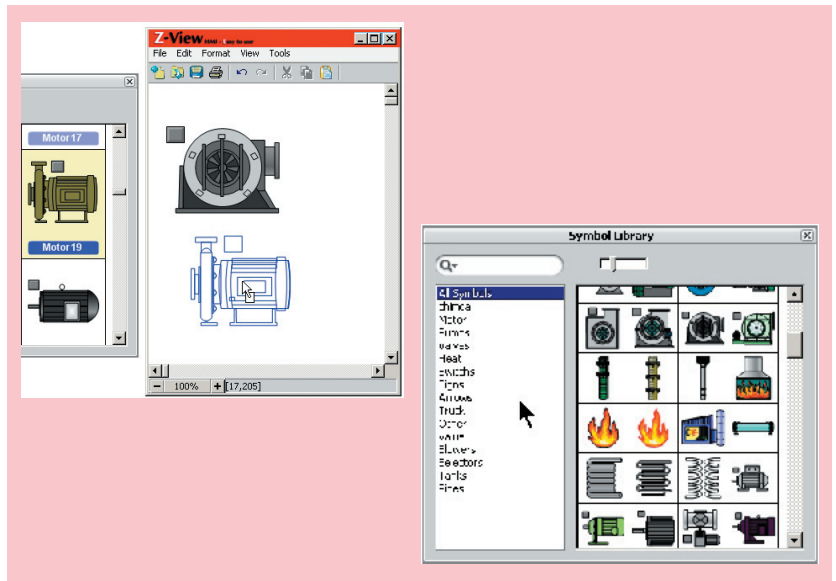
Z-View always makes sure only authorized users are able to perform actions such as changing values or acknowledging alarms. Screen actions can be configured to display a confirmation box first or ask for a minimal user-level. Operator actions can be logged to a user-actions database table.

# Z-View

HMI - Easy to use

## Rapid Screen Creation

Z-View includes an integrated screen designer for rapidly designing and editing screens. Screens can be edited any time with a single keystroke. There's no need to switch to a different application or even a different window. An extensive, customizable symbol library gives you a head start with hundreds of elements from standard plant equipment such as valves, pumps and motors to schematic symbols and text boxes. All symbols come with links included, so the only thing you need to provide is a variable address. To add these symbols to your screen, simply drag & drop them in the desired location.

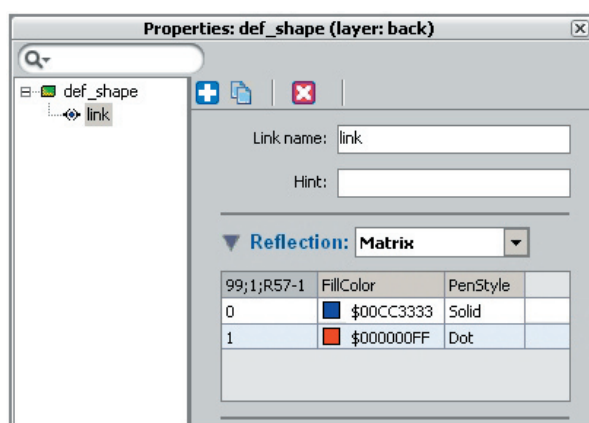
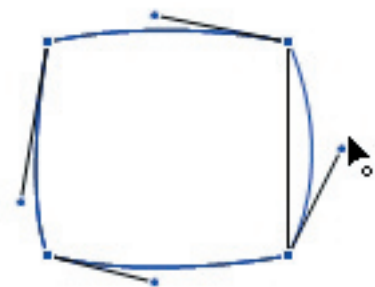


## State-of-the-Art Drawing Tools

The vector-graphics based screen designer lets you draw anything from rectangles, ellipses or bezier curves to complex, multi-colored symbols comprised of hundreds of shapes. The concise, easy to use appearance and property panels let you make changes to visual appearance, and see those changes immediately reflected in your screen, without needing to hit an OK or Apply button. Unlimited undo/redo with a detailed history panel lets you revert any changes. The screen designer includes tools to align, rotate, group, flip, duplicate and otherwise arrange elements with ease. You can also use bitmap images in your screens and create layout guides for aligning elements.

## Easy Linking

In Z-View, links are the glue that connects real-time values to screen elements, letting you create rich animations to reflect the process as it unfolds. With Z-View links you are not limited to changing colors or texts. By tying values to specific properties, links let you change any attribute of any element in any way you wish, and you can use as many links as you'd like on a each element. You can also specify actions to be performed on mouse-clicks or keystrokes, such as changing values, switching screens, opening floating panels or performing complex scripts.



## Straight-Forward Addressing

Z-View lets you reference any valid item in the PLC address space, without having to define it in advance. A simple, easy to use aliases table lets you separate the screen addressing from the PLC. You can also specify complex expressions and formulae to further facilitate the visualization of complex calculations.

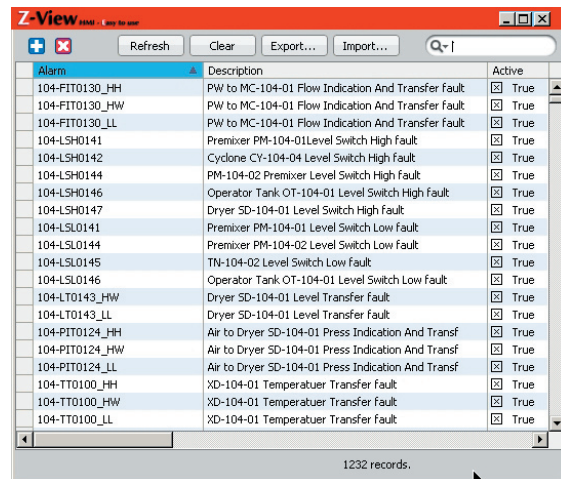
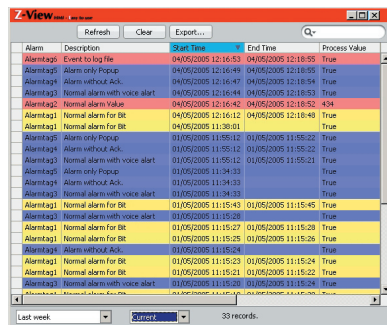
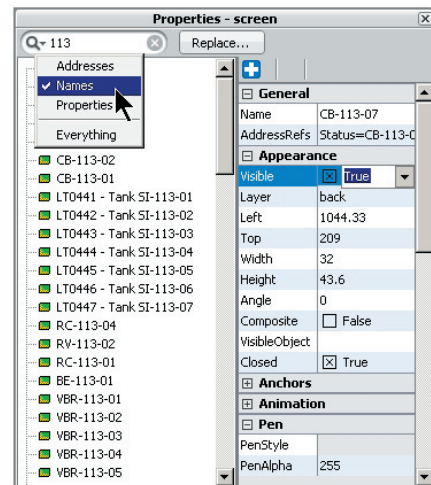
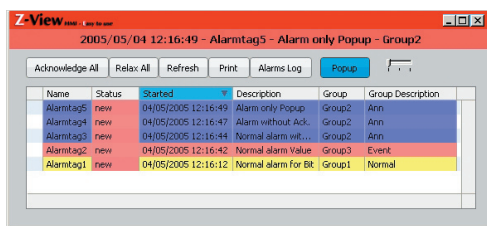


## Maximum Object Reuse

Z-View takes the concept of object reuse to the maximum. With relative addresses you can define complex object behavior and then reuse objects with only a single change of address for each object. This concept can be taken further by designing detail screens for each kind of element in your process, for example pumps, or valves, and then reusing these as floating panels, entering addresses only once for each instance.

## Instant Search & Replace

The property panel lets you find any address, element name or value by simply entering the search term in the search box. You are immediately presented with a list of all objects containing the search term. To replace all instance of the term, just click the Replace button and enter the replacement string.



## Stay Informed

Z-View provides a straight-forward system for monitoring process alarms. Alarms are organised by groups, and alarm conditions are constantly evaluated against static or dynamic set-points. Alarm groups can be assigned colors to provide further visual cues on the nature of alarms. Each alarm point can be individually configured to perform different actions, such as popping-up the alarm summary window, toggling a flag in the PLC, playing an audio file, or sending out an SMS message.

## Current Alarms

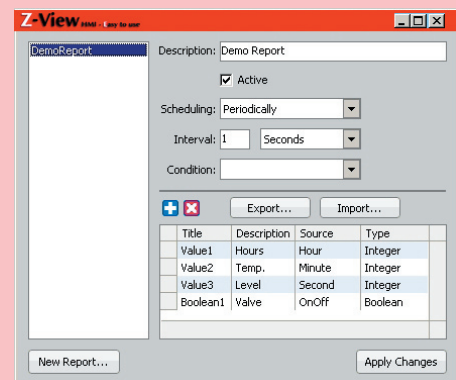
When a new alarm occurs, the alarm summary window pops up. If the alarm window is in the way, the popup feature can be disabled by a single click. You can sort the list of active alarms by start time, alarm name, alarm group, status, or description. In addition, you can use the relax feature to get rid of alarms which are of no interest at the moment. Clicking the Refresh button will restore all active alarms to the list. Acknowledging alarms can be done for all active alarms or for individual alarms.

## Unlimited History

Alarms can also be logged to the alarm log, a database table automatically maintained by Z-View. The alarm log maintains information such as alarm start and end times, the process value, acknowledge time and the duration of the alarm in seconds. The alarm log table uses alarm colors for displays and lets you export the data to .csv files, filter the data by date or quickly search for a specific alarm or value.

## Easy Reports

Z-View places no limit on the amount of variables you can put in a single report, or on the conditions for logging. A simple table view lets you add variables to a table, and you can also use expressions like anywhere else in Z-View. Reports can be logged according to a time schedule or by event or condition. The logging times are automatically normalized so that for example reports taken once an hour will be taken on the hour. Reports can be logged to the internal high-performance database, or to an external database using ODBC, letting you easily share information between Z-View and other applications.



## User-Friendly Tables

The table windows in Z-View give you all the power you needed without any fuss. Quickly sort your information any way you want, search for a specific value or filter your records by time. You can also export records to a .csv file for use in Microsoft Excel, Microsoft Access, or any other database software.



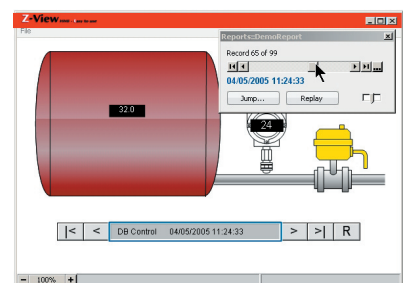
## Replay Historical Data

Z-View lets you visualize historical data in operator screens to easily and effectively audit past processes. With a single mouse-click you can watch a logged process unfold in animation on your screen, displaying sampled values and animating screen elements. Z-View also lets you control the speed of animation, making sure you can catch any small detail.

## Fetch Data. Fast.

Z-View features an industry leading high-performance communications engine, and includes an extensive collection of drivers for PLC's (only in Z-View full). Z-View performs data requests to different PLC's simultaneously using multi-threading in order to ensure that you'll get your data as fast as possible. There's no need to predefine data blocks. Just reference the data and Z-View does all the rest.

Time	Value1	Value2	Value3	Boolean1
04/05/2005 13:25:00	13	24	59	False
04/05/2005 13:24:59	13	24	59	False
04/05/2005 13:24:58	13	24	57	False
04/05/2005 13:24:57	13	24	56	False
04/05/2005 13:24:56	13	24	55	False
04/05/2005 13:24:55	13	24	54	False
04/05/2005 13:24:54	13	24	53	False
04/05/2005 13:24:53	13	24	52	False
04/05/2005 13:24:52	13	24	51	False
04/05/2005 13:24:51	13	24	50	False
04/05/2005 13:24:50	13	24	49	False
04/05/2005 13:24:49	13	24	48	False
04/05/2005 13:24:48	13	24	47	False
04/05/2005 13:24:47	13	24	46	False



## Data Integrity

Z-View makes sure your data is always up-to-date. In the case of communications error or a timeout, your data is immediately updated to reflect the problem. When changing values, Z-View does not update the read values until the next time they are fetched from the PLC.

## Transparent Distributed Communications

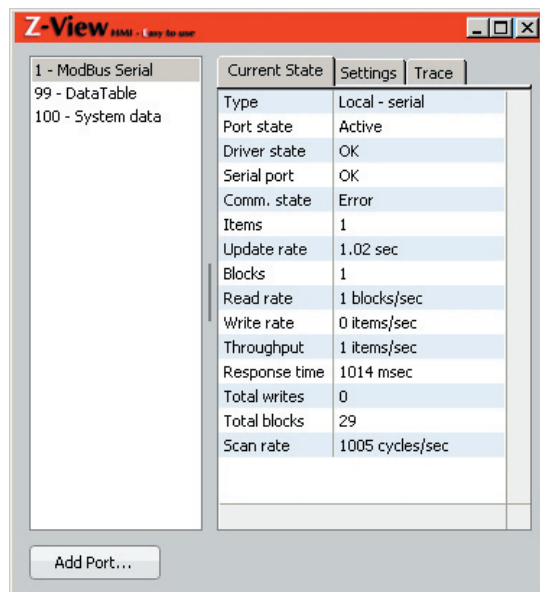
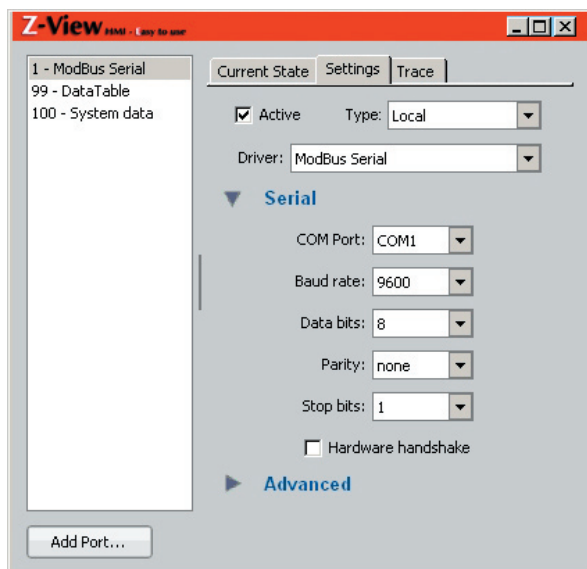
Z-View stations can easily share real-time information with minimal configuration effort. Information is sent only when needed, or only upon change of value, thus minimizing network traffic. You can design your network to work in peer-to-peer fashion or in server-client mode. Z-View network communication can also be configured for redundancy.

## Complex Expressions

In addition to letting you define aliases to use instead of addresses, Z-View lets you use complex expressions and formulae incorporating multiple variables, constants or functions. Z-View includes a rich set of mathematical and string functions that let you perform useful transformations on your data before it is displayed or stored.

## ■ Setup and Go

Communication setup is as simple as selecting a driver and a handful of communication parameters. There's no need to restart Z-View for changes to take effect. In fact, you don't even have to click an OK button. Changes you make to communication ports are immediately reflected. The settings pane in the data sources window also lets you further customize the behavior of ports, such as balancing write and read operations, block fragmentation or automatically disabling communication to problematic stations on multi-drop connections.



## ■ Up-to-Date Statistics

The data sources window also provides a host of statistical information about communications to let you fine-tune performance, or isolate communication problems. The information displayed includes the update rate, the number of read blocks, read rate, write rate, throughput and response time.



### Head Office:

34 Batzri St., Ir-Ganim, Kiriati-Ata  
P.O.B 49, Kiriati-Ata 28100, Israel  
Tel: 972-4-8729822 Fax: 972-4-8726627

### YOUR LOCAL DISTRIBUTER

