



**soe tough**



Braces for every position and every athlete.

soe tough

When it comes to protecting Linemen or supporting a skill position, we believe there is no one-size-fits-all solution. Bledsoe offers a wide range of braces to fit every athlete's needs. We offer several braces designed to support or prevent injuries to the knee, ankle, and elbow.



## Knees

AXIOM | Z-13

Maximum Protection



## Ankles

WRAPTOR | AXIOM | ULTIMATE

Mild-Severe Ankle Protection



## Elbows

Mild-Moderate Support  
Hyperextension Control

2012 season

# Maximum Protection

## AXIOM KNEE BRACE

The Axiom knee brace offers maximum protection with durable aluminum and spring steel reinforcement. The Axiom is ideal for the linemen who require a larger frame due to either increased height and/or thigh circumference. It is very low profile under the uniform, conforms to the leg without discomfort or cramping and is designed not to migrate due to the offset tibia and calf straps.

- » Low-profile frame
- » 16" length for maximum control
- » Unique calf strapping mimics a finger-trap design to minimize migration

**IDEAL FOR:**  
Football Linemen

**AVAILABLE:**  
Spring Steel Reinforced Aluminum or Lightweight Magnesium Custom (up to 35" thigh) or Off-the-Shelf (up to 31" thigh) Standard or Athletic Fit Quick Release Buckles or D-rings Everyday Pads or High Activity Pads



# Economic Option

## Z-13 KNEE BRACE

The Z-13 combines a streamlined design with the strength of Aluminum. The Z-13 works well on shorter linemen and can be ordered in two lengths. It is easy to wear and strong enough to withstand football contact. Ideal brace solution for the budget conscience programs.

- » Low-profile frame
- » 13" compact length and 15" length for greater control
- » Unique upper calf strapping mimics a finger-trap design to minimize migration

**IDEAL FOR:**  
Football Linemen and Skill Positions

**AVAILABLE:**  
Off-the-Shelf (up to 2XL) 13" Standard Length or 15" Extended Length Standard or Athletic Fit

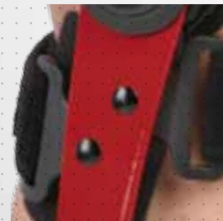


### PIVOTING STRAPS



Independently pivoting strap attachments move with leg muscles and reduce brace migration.

### OFF-SET CALF STRAPS



Quick-release buckles disconnect in a snap. D-rings also available for high contact sports.

### MAXIMUM PROTECTION



Aluminum version is spring steel reinforced for maximum protection.

### PIVOTING STRAPS



Short 13" length is compact yet stable and longer 15" length for additional control.

### INDEPENDENTLY



Independently pivoting strap attachments move with leg muscles and reduce brace migration.

# PROPHYLACTIC Support

## WRAPTOR LACE-UP ANKLE STABILIZER

Lace-up ankle braces have been proven to reduce the incidents of acute ankle injuries in athletes both with and without a previous ankle injury\*. The Bledsoe Wraaptor combines function and comfort--the key to compliance is to keep your athletes in the game!

Several new materials make the Bledsoe Wraaptor more comfortable: Sharkskin material at the base of the foot reduces brace slippage, breathable spacermesh lining wicks moisture away, and elastic forefoot material reduces fabric bunching.

- » Figure 8 design mimics taping saving time, money, and resources
- » Durable nylon and reinforced stitching design withstand extreme stress and wear
- » 6 month extended warranty for teams

### IDEAL FOR:

Football: All Positions  
Basketball: All Positions  
Volleyball: All Positions

### AVAILABLE:

Regular Laces  
Speed Laces



\*McGuine, Timothy; Brooks, Alison; Hetzel, Scott. The Effect of Lace-up Ankle Braces on Injury Rates in High School Basketball Players. The American Journal of Sports Medicine. July, 2011.

### COOLER MATERIALS



Mesh material wicks moisture away from the skin keeping athletes cool and comfortable.

### SPEED LACES



Laces quickly adjust and secure for athletes with little time to apply a full lace-up.

### ACHILLES RELIEF



Padding just above the heel provides relief and padding for the Achilles Tendon.

### COLOR OPTIONS



Jet Black



Pure White

# Maximum Support

## AXIOM ANKLE BRACE

The Bledsoe AXIOM Ankle supports the toughest ankle injuries and provides maximum protection for athletes.

The dual tibial straps and posterior cuff secure for optimal support of high-ankle sprains. The AXIOM Ankle can also be used for early return to play for grade 1 and grade 2 ankle sprains.

Anatomical hinges are offset anteriorly/posteriorly and proximally/distally creating an ideal fit and free range-of-motion for highly active athletes.

- » Low-profile frame
- » Speed buckles ease athlete application and ensure proper fit every time
- » Dual straps and posterior cuff provide high ankle support for those difficult sprains
- » Removable pad liner for laundering

### IDEAL FOR:

Football: Post-injury Support  
Basketball: High Ankle Support  
Soccer: All Positions

### AVAILABLE:

With Buckles



### QUICK RELEASE BUCKLES



Quick-release buckles disconnect in a snap.

### FULL FOOTPLATE



Full footplate reduces pressure points.

### ANATOMICAL MOVEMENT



Offset hinges align with ankle bones for ideal, comfortable fit that doesn't fight as athletes move.

**MILD-MODERATE**Support

# BASIC

## ELBOW SLEEVE AND PADDED SUPPORT

Elbow sleeves designed for compression and warmth to the joint.

Padded sleeves provide cushion and protection for the elbow. Durable foam construction is designed to stand up to the toughest of conditions.

- » Neoprene posterior for compression and warmth
- » Soft TriTech material for breathability and freedom of movement
- » Low-profile seams minimize irritation for highly active athletes

**IDEAL FOR:**  
Elbow sprains and strains, tendonitis, and bursitis

**AVAILABLE:**  
Basic Sleeve  
Padded Sleeve



**HYPER-EXTENSION**Control

# HINGED

## HYPER-EXTENSION ELBOW BRACE

The next generation of hyper-extension elbow braces is here. The Hinged Elbow Brace features dual upright hinges and cross straps to prevent hyper-extension of the elbow.

When returning to play early, the Hinged Elbow Brace controls range-of-motion and protects your athletes.

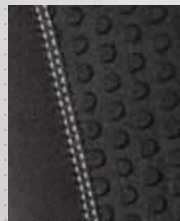
- » Low-profile heavy duty hinges
- » Fully adjustable cross straps prevent hyperextension
- » Extension stops included for additional range of motion control

**IDEAL FOR:**  
Football, Basketball, Motocross, and Rodeo:  
Hyperextension prevention in injured athletes

**AVAILABLE:**  
Neoprene for maximum compression and warmth  
TriTech for breathability and mild compression



### INNOVATIVE MATERIALS



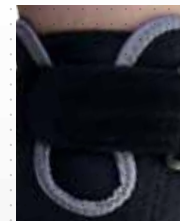
Neoprene posterior for compression and warmth. TriTech for breathability and freedom of movement.

### PADDED VERSION



Foam pad protects the olecranon.

### BICEP ADJUSTMENT



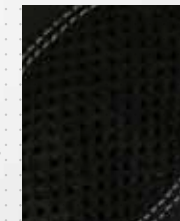
Bicep cuff easily adjusts for multiple sizes with one-hand strap.

### ADJUSTABLE CROSS STRAPS



Cross straps adjust for extension control.

### MESH CUTOUT



Mesh cutout reduces irritation when arm is flexed creating a more comfortable fit.

### REMOVEABLE HINGE



Hinges are fully removable for laundering.



**BLED SOE BRACE SYSTEMS**

2601 Pinewood Drive  
Grand Prairie, TX 75051

**UNITED STATES**

Toll Free (888) 253-3763  
Tel (972) 647-0884  
Fax (972) 660-5495

**INTERNATIONAL**

Tel (972) 522-7484  
Fax (972) 660-5495

[www.bledsoebrace.com](http://www.bledsoebrace.com)  
[www.soebledsoe.com](http://www.soebledsoe.com)

**Featured on the cover - Z-13 Knee Brace Key:** 1. Low-profile Frame 2. Moisture-resistant Liners 3. Optional PCL Strap 4. Condyle Pads 5. Velcro Tabs 6. Antioxidant Paint 7. Aluminum Frame 8. Pivoting Strap Tabs 9. Independent Pivoting Calf Strap 10. Heavy-duty Hinges 11. Impact-resistant Tabs