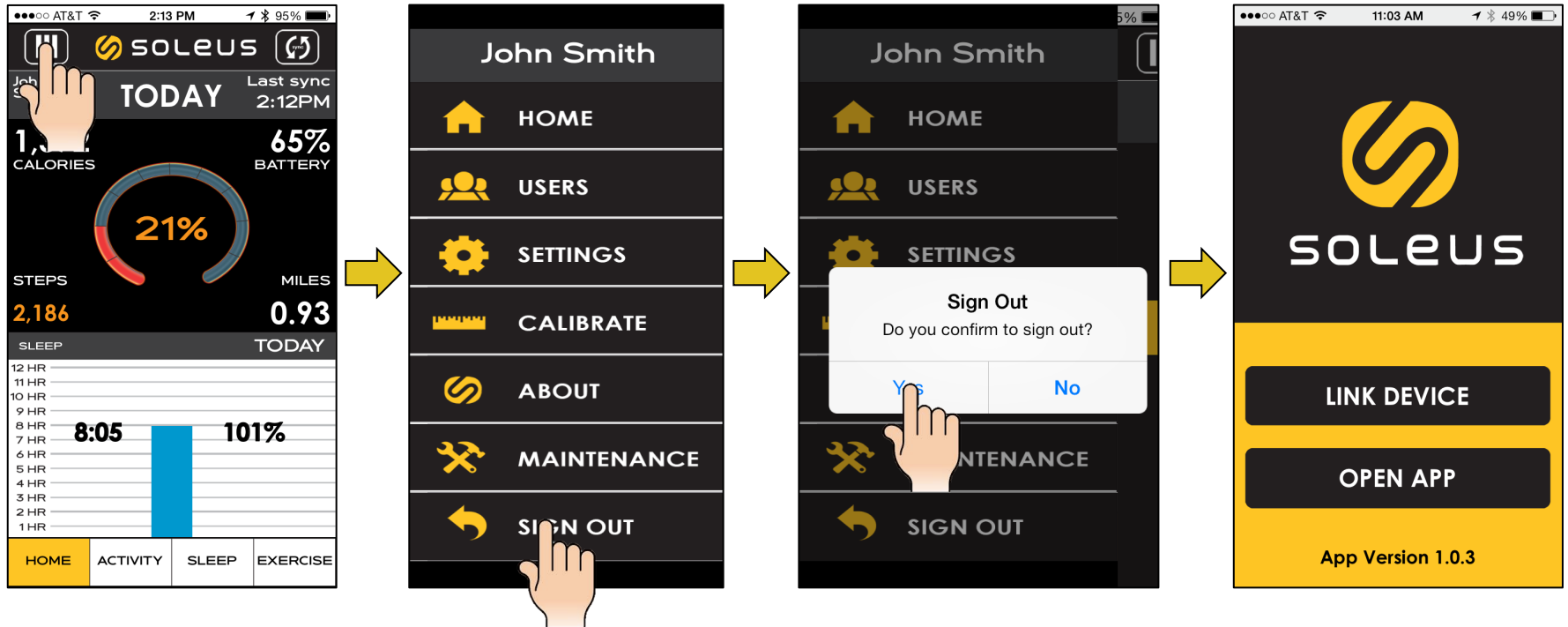


SOLEUS GO!

iPhone® Re-pairing Procedure

Unexpected Bluetooth behavior such as loss of phone call or text notifications, disconnects, intermittent connectivity, or a lost connection may result in the need to re-pair your GO! and your smart phone. These procedures will help.

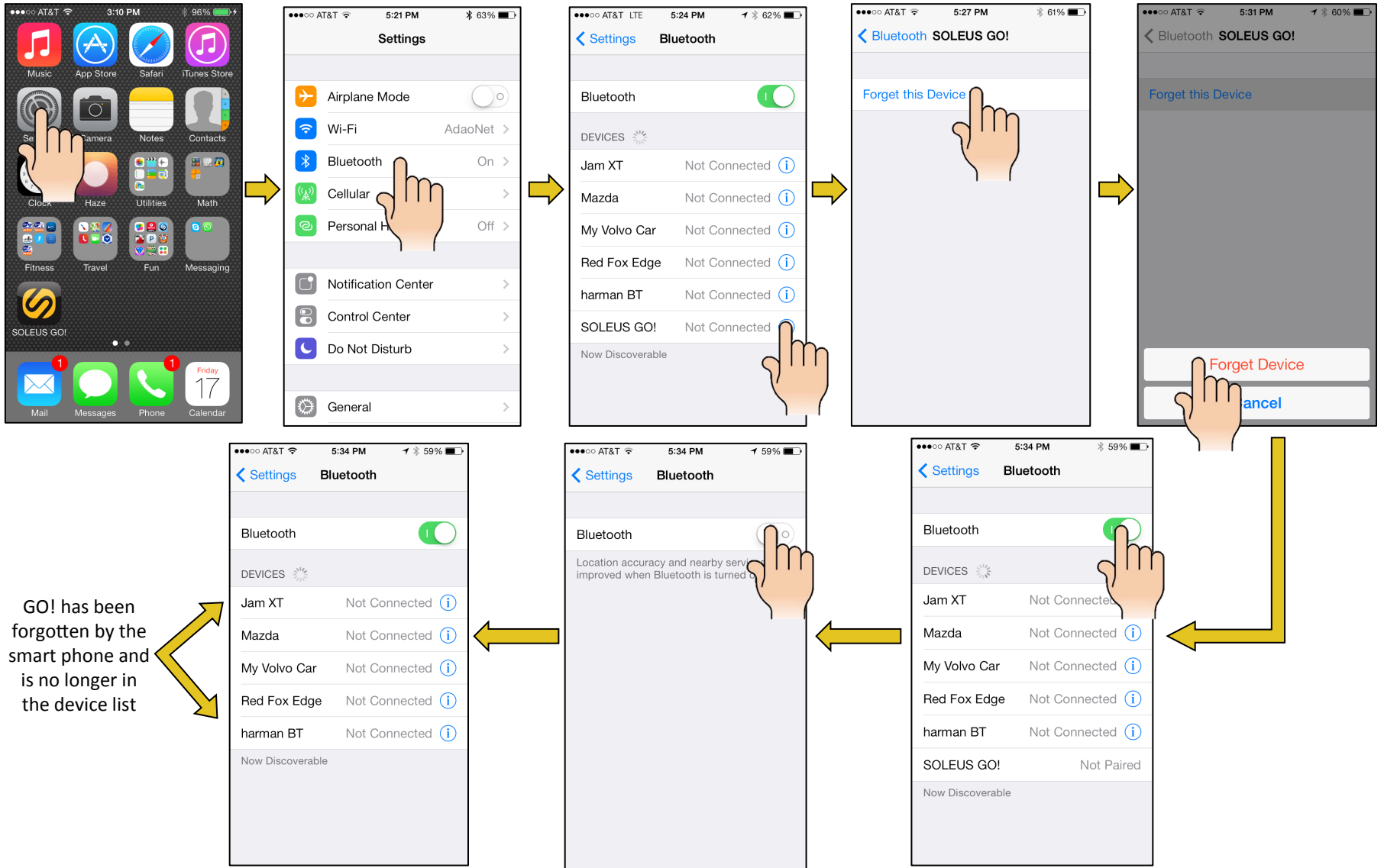
1. Sign out of the App



SOLEUS GO!

iPhone® Re-pairing Procedure

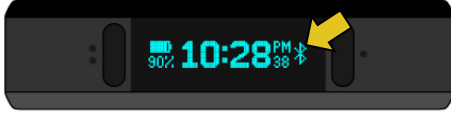
2. Forget SOLEUS GO! In the Bluetooth settings on your smart phone



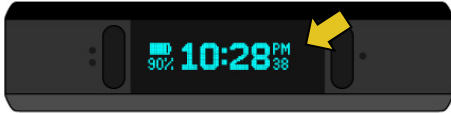
SOLEUS GO!

iPhone® Re-pairing Procedure

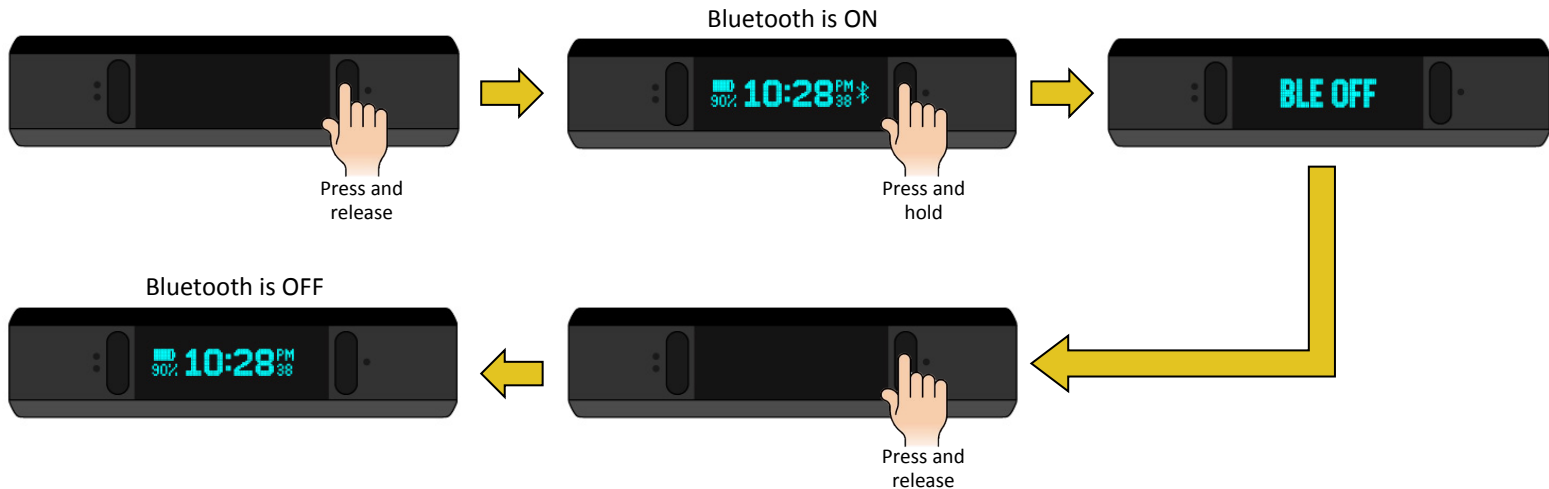
3. Turn off the Bluetooth on your GO!



A constant or blinking Bluetooth icon means that GO!'s Bluetooth is turned ON



No Bluetooth icon means that GO!'s Bluetooth is turned OFF



SOLEUS GO! iPhone® Re-pairing Procedure

4. Re-pair GO! with your smart phone

