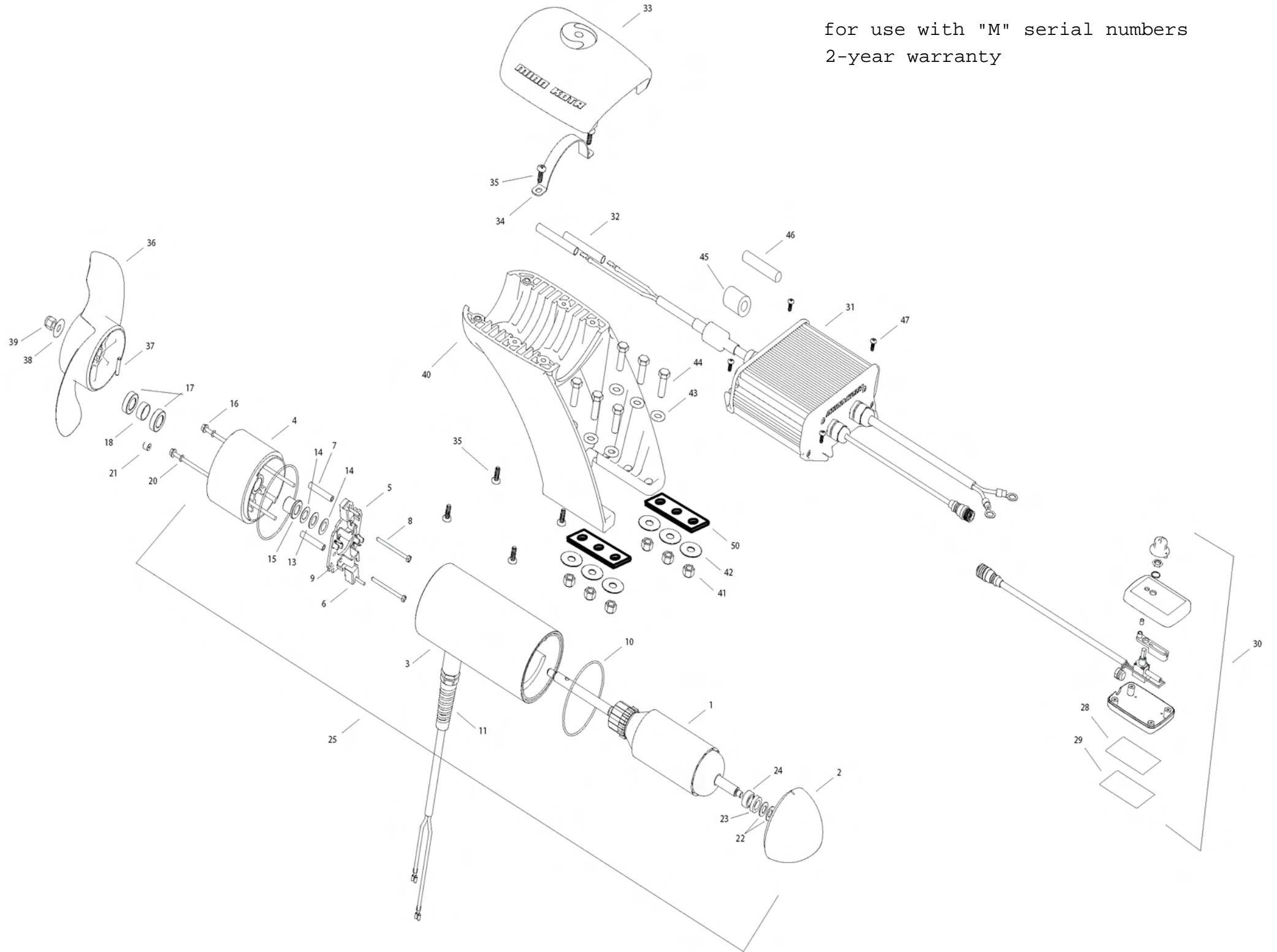


EM Riptide 80
24 VOLT 58 AMPS

for use with "M" serial numbers
2-year warranty



1	2-100-234	ARMATURE 24V 4.0	
2	421-376	PLAIN END	
3	2-200-398	CENTER HOUSING ASSEMBLY	
4	2-300-349	BRUSH END HOUSING (CONTAINS 4-9)	
5	2-600-234	BRUSH PLATE ASSEMBLY (CONTAINS 5, 6, 9)	
6	188-094	BRUSH	
7	973-025	SPACER - BRUSH PLATE	
8	830-027	SCREW #10-32 X 2 SLF THREAD	
9	975-041	BRUSH SPRING	
10	701-043	O-RING [2 EA]	
11	2772917	LEADWIRE ASSEMBLY	
13	990-051	WASHER STEEL	
14	990-052	WASHER NYLATRON	
15	144-017	FLANGE BEARING	
16	830-094	THRU-BOLT 12-24 X 10.31	
17	880-025	SEAL [2 EA]	2889460 SEAL & ORING KIT
18	725-095	PAPER TUBE	
20	701-009	O-RING THRUBOLT	
21	836-001	ALUMINUM PLUG	
22	992-010	SPRING WASHER [2 EA]	
23	990-045	THRUST SPACER	
24	140-010	BALL BEARING	
25	2396234	MOTOR ASSY 24V 4.0 80#	
28	9950953	VELCRO 1.5 X 2.0 LOOP	
29	9950950	VELCRO 1.5 X 2.0 HOOK	
30	2990241	HAND CONTROLER	
31	2990247	CONTROL MODULE	
32	2385401	SHRINK TUBE [2 EA]	
33	2380211	TOP CAP	
34	2383810	STRAP, EM	
35	2383418	SCREW 1/4-20 SELF TAPPING [6 EA]	
■	1378132	PROP KIT	
36	2331160	PROPELLER	
37	2262658	DRIVE PIN	
38	2091701	WASHER, PROP LARGE	
39	2198401	NUT, PROP	
40	2381940	LOWER BRACKET	
41	2383122	NUT 3/8-16 NYLOCK [6EA]	
42	2381726	WASHER FENDER 3/8 X 1 1/4 OD [3 EA]	
43	2381728	WASHER 3/8 [3 EA]	
44	2383422	SCREW 3/8 X 1 1/4 [6EA]	
45	2307310	FERRITE BEAD (EUROPEAN MOTORS ONLY)	
46	2075401	HEATSHRINK (EUROPEAN MOTORS ONLY)	
47	2373427	SCREW #12 X 5/8 [4 EA]	
50	2385110	INSULATOR PAD, EM	
■	2994856	BAG ASSY (CONTAINS 38-41,32,28,29,47,50, &TIE WRAPS)	

* This item is part of an assembly. This item cannot be sold separately due to machining and /or assembly that is required.

