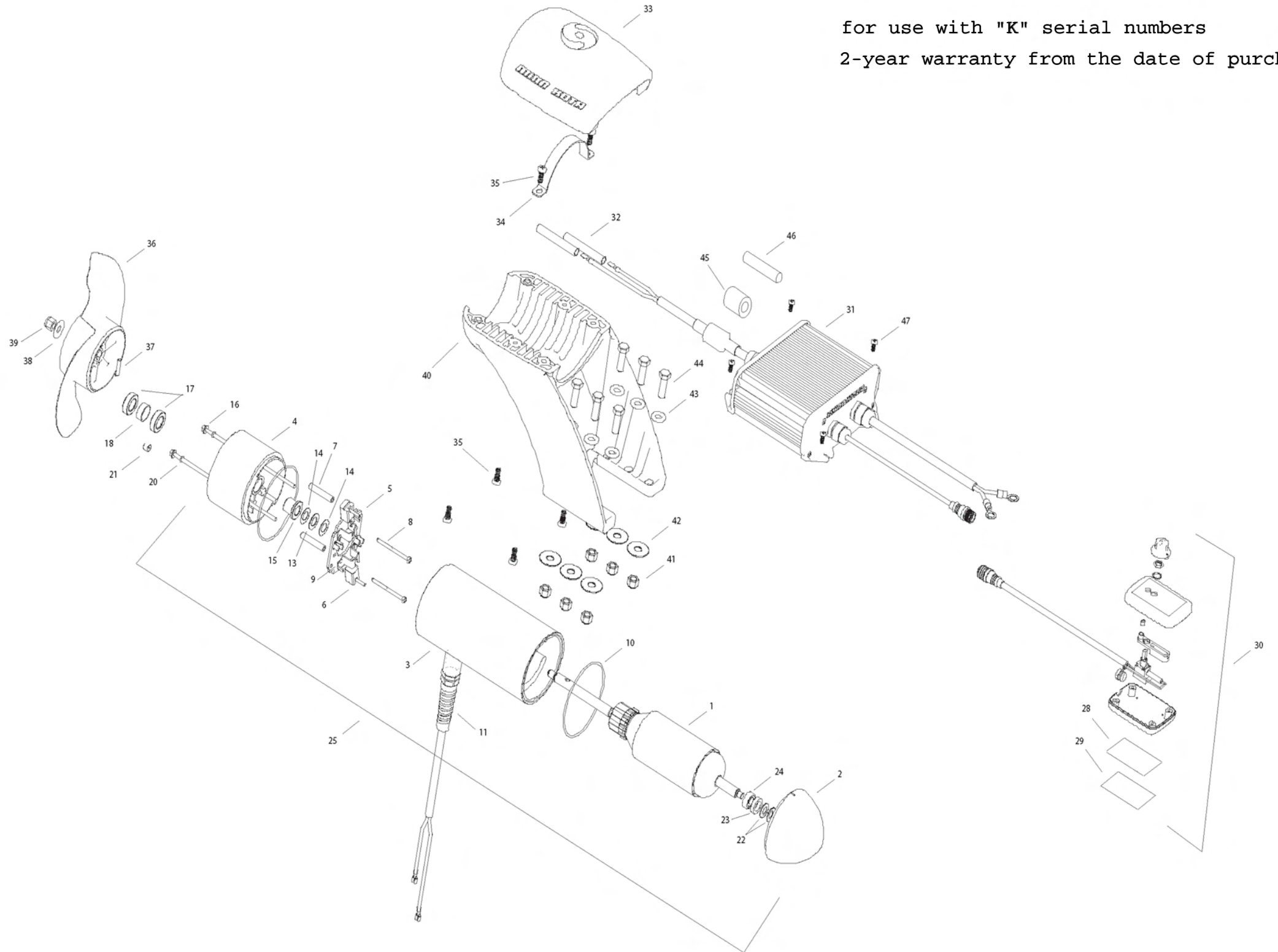


EM 80
24 Volt 56 Amps

for use with "K" serial numbers
2-year warranty from the date of purchase



| | | |
|----|-----------|---|
| 1 | 2-100-234 | ARMATURE 24V 4.0 |
| 2 | 421-376 | PLAIN END |
| 3 | 2-200-398 | CENTER HOUSING ASSEMBLY |
| 4 | 2-300-349 | BRUSH END HOUSING (CONTAINS 4-9) |
| 5 | 2-600-234 | BRUSH PLATE ASSEMBLY (CONTAINS 5, 6, 9) |
| 6 | 188-094 | BRUSH |
| 7 | 973-025 | SPACER - BRUSH PLATE |
| 8 | 830-027 | SCREW #10-32 X 2 SLF THREAD |
| 9 | 975-041 | BRUSH SPRING |
| 10 | 701-043 | O-RING [2 EA] |
| 11 | 2772917 | LEADWIRE ASSEMBLY |
| | | |
| 13 | 990-051 | WASHER STEEL |
| 14 | 990-052 | WASHER NYLATRON |
| 15 | 144-017 | FLANGE BEARING |
| 16 | 830-094 | THRU-BOLT 12-24 X 10.31 |
| 17 | 880-025 | SEAL [2 EA] |
| 18 | 725-095 | PAPER TUBE |
| | | |
| 20 | 701-009 | O-RING THRUBOLT |
| 21 | 836-001 | ALUMINUM PLUG |
| 22 | 992-010 | SPRING WASHER [2 EA] |
| 23 | 990-045 | THRUST SPACER |
| 24 | 140-010 | BALL BEARING |
| 25 | 2396234 | MOTOR ASSY 24V 4.0 80# |
| 28 | 9950953 | VELCRO 1.5 X 2.0 LOOP |
| 29 | 9950950 | VELCRO 1.5 X 2.0 HOOK |
| 30 | 2990241 | HAND CONTROLER |
| 31 | 2990237 | CONTROL MODULE |
| 32 | 2385401 | SHRINK TUBE [2 EA] |
| 33 | 2380211 | TOP CAP |
| 34 | 2383810 | STRAP, EM |
| 35 | 2383418 | SCREW 1/4-20 SELF TAPPING [6 EA] |
| ■ | 1378132 | PROP KIT |
| 36 | 2331160 | PROPELLER |
| 37 | 2262658 | DRIVE PIN |
| 38 | 2091701 | WASHER, PROP LARGE |
| 39 | 2198401 | NUT, PROP |
| 40 | 2381940 | LOWER BRACKET |
| 41 | 2383122 | NUT 3/8-16 NYLOCK [6EA] |
| 42 | 2381726 | WASHER FENDER 3/8 X 1 1/4 OD [3 EA] |
| 43 | 2381728 | WASHER 3/8 [3 EA] |
| 44 | 2383422 | SCREW 3/8 X 1 1/4 [6EA] |
| 45 | 2307310 | FERRITE BEAD (EUROPEAN MOTORS ONLY) |
| 46 | 2075401 | HEATSHRINK (EUROPEAN MOTORS ONLY) |
| 47 | 2373427 | SCREW #12 X 5/8 [4 EA] |
| ■ | 2994856 | BAG ASSY (CONTAINS 38-41,32,28,29,47,TIE WRAPS) |

2889460 Seal & Oring kit

24V

(+) AND (-)
TO SECOND
MOTOR
(+) ET (-) AU
DEUXIÈME
MOTEUR

VIOLET (+)
VIOLET (+)

GRAY (-)
GRIS (-)

MOTOR(S)
MOTEUR(S)

CONTROL MODULE
(DUAL UNIT SHOWN)
MODULE DE
COMMANDE
(POUR DEUX UNITÉS ICI
ILLUSTRÉ)

HAND CONTROLLER
COMMANDE MANUELLE

RED (+)
ROUGE (+)

BLACK (-)
NOIR (-)

CONNECTING WIRE
FIL DE RACCORDEMENT

BATTERY 2
BATTERIE 2

BATTERY 1
BATTERIE 1

