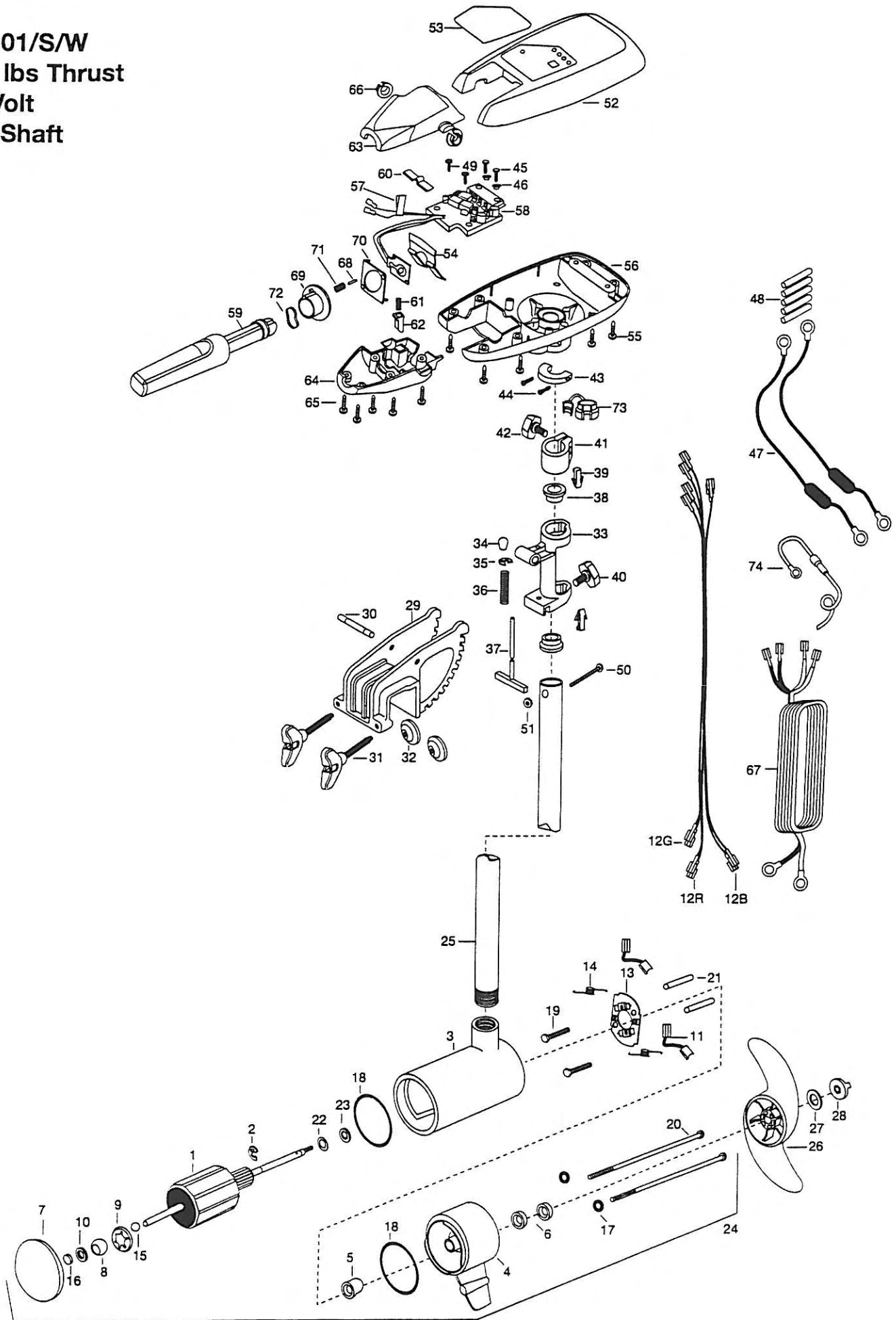


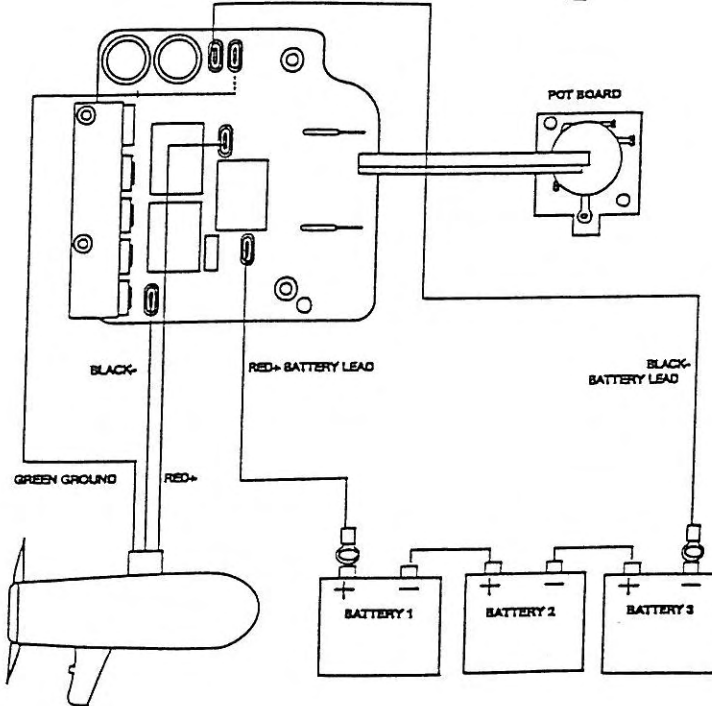
RT101/S/W
101 lbs Thrust
36 Volt
42" Shaft



1	2-100-110	ARMATURE ASSEMBLY 36V VARS SW 101#	25	2032032	TUBE (COMPOSITE) 42" WHITE	50	2263406	SCREW-#10-24 X 2 (SS) PPH
2	788-040	RETAINING RING	26	2331130	PROPELLER (W. WDG) MAX101	51	2333101	NUT-HEX 10-24 UNC-2B NYLOCK
3	431-310	CENTER HOUSING ASSEMBLY-4.0 TXT WHITE	27	2091701	WASHER-PROP LARGE MAX	52	2300219	COVER-CONTROL BOX (SW) RT WHITE
4	2-300-340	BRUSH END HOUSING ASSEMBLY 4 SW TXT	28	2198401	ANODE-ZINC 4.0 LWR UNIT	53	2095683	DECAL-COVER RT101/B/S
5	144-017	BEARING-FLANGE (SERVICE ONLY)	■	2991830	BRACKET & HINGE ASSEMBLY (SW)	54	2302743	SPRING-DETENT HANDLE-TILT
6	880-025	SEAL [2.EA]	29	2031933	BRACKET DIE CAST SW WHITE 10P	55	2303412	SCREW-6-20 X 5/8 SELF TAP [6.EA]
7	2-400-341	PLAIN END HOUSING ASSEMBLY	30	2010512	PIN-DRIVE LOK 3/8 X 2-1/2 SS	56	2062596	CONTROL BOX, SW, WHITE .725 BORE
8	144-021	BEARING-SPHERICAL	31	2061301	SCREW-CLAMP ENDURA [2.EA]	57	2305810	TAG-AIR SWITCH LEADS
9	784-025	BEARING RETAINER	32	2331700	WASHER-CLAMP SCREW 1.5 [2.EA]	58	2264013	CTRL BOARD ASSEMBLY-RT 101
10	991-040	WASHER FELT	33	2031856	HINGE-MACH SS RT WHITE	59	2990915	HANDLE ASSEMBLY W/O U-JOINT
11	188-094	BRUSH W/TERMINAL [2.EA]	34	2010100	KNOB-TILT	60	2302742	SPRING-DETENT (OFF) SS
12B	640-017	LEADWIRE-BLACK	35	2333001	E-RING-SS	61	2302745	SPRING-RELEASE BUTTON SS
12R	640-121	LEADWIRE-RED	36	2332700	SPRING-(T-BAR) SS	62	2303720	RELEASE BUTTON-HANDLE
12G	640-303	LEADWIRE-GREEN	37	2033601	T-BAR (E-COAT)	63	2060411	HANDLE (TOP HALF) MAXIMIZE
13	738-004	BRUSH PLATE-4" TERMINAL	38	2037301	BUSHING-HINGE [2.EA]	64	2060415	HANDLE (LOWER HALF)
14	975-041	SPRING-TORSION [2.EA]	39	2062800	TENSION BLOCK-"SNAP IN" [2.EA]	65	2303412	SCREW-6-20 X 5/8 SELF TAP [5.EA]
15	116-025	BALL-STEEL	40	2011386	SCREW-TENSION/NEW KNOB SS	66	2060005	BEARING-HANDLE PIVOT [2.EA]
16	303-043	THRUST DISC-METAL	41	2061520	COLLAR-DEPTH	67	2090600	LEADWIRE (10 GA) RINGS
17	701-009	O-RING-THRU BOLT [2.EA]	42	2011366	SCREW-COLLAR/NW KNOB SS	68	2302600	PIN-ACTUATOR
18	701-043	O-RING [2.EA]	43	2061517	COLLAR-CTRL BOX SW WHITE	69	2302850	ACTUATOR-CAM
19	830-027	SCREW-SELF THREADED 10-32 X 2" [2.EA]	44	2223430	SCREW #8-3/4 PPH TYPE 25 SS [2.EA]	70	2302851	ACTUATOR-FWD/REV
20	830-096	THRU BOLT 12-24 X 11.56" SS [2.EA]	45	2301310	SCREW-8-18 X 1/2 SS [2.EA]	71	2302740	SPRING-(ACTUATOR)
21	973-025	SPACER-BRUSH PLATE [2.EA]	46	2301710	WASHER-INSUL. (TRANSE.BAR) [2.EA]	72	2302741	SPRING-CAM (ZNC PLTD STEEL)
22	990-051	WASHER-THRUST, STEEL	47	2998200	CIRCUIT BRKR ASSEMBLY, 36V- [2.EA]	73	2052900	STRAIN RELIEF-C. CORD/SP. C
23	990-052	WASHER-NYLATRON	48	2305400	SHRINK TUBE-3/8 OD X 1-1/ [5.EA]	74	2060310	CONNECT GROUND WIRE-FUSED
24	2317053	MOTOR ASSEMBLY 36V VARS SW-INCL. 1-23	49	2372100	SCREW-8-18 X 5/8 THD* SS [2.EA]			

* This item is part of an assembly. This item cannot be sold separately due to machining and /or assembly that is required.

RT101/S
36-volt



Note:

If you experience depth finder interference, attach the green motor ground wire to the control board ground as shown.

Do NOT use the crank battery as one of the three supply batteries! Using the crank battery as one of the supply batteries will cause corrosion damage to the trolling motor, and **VOID the Warranty!**