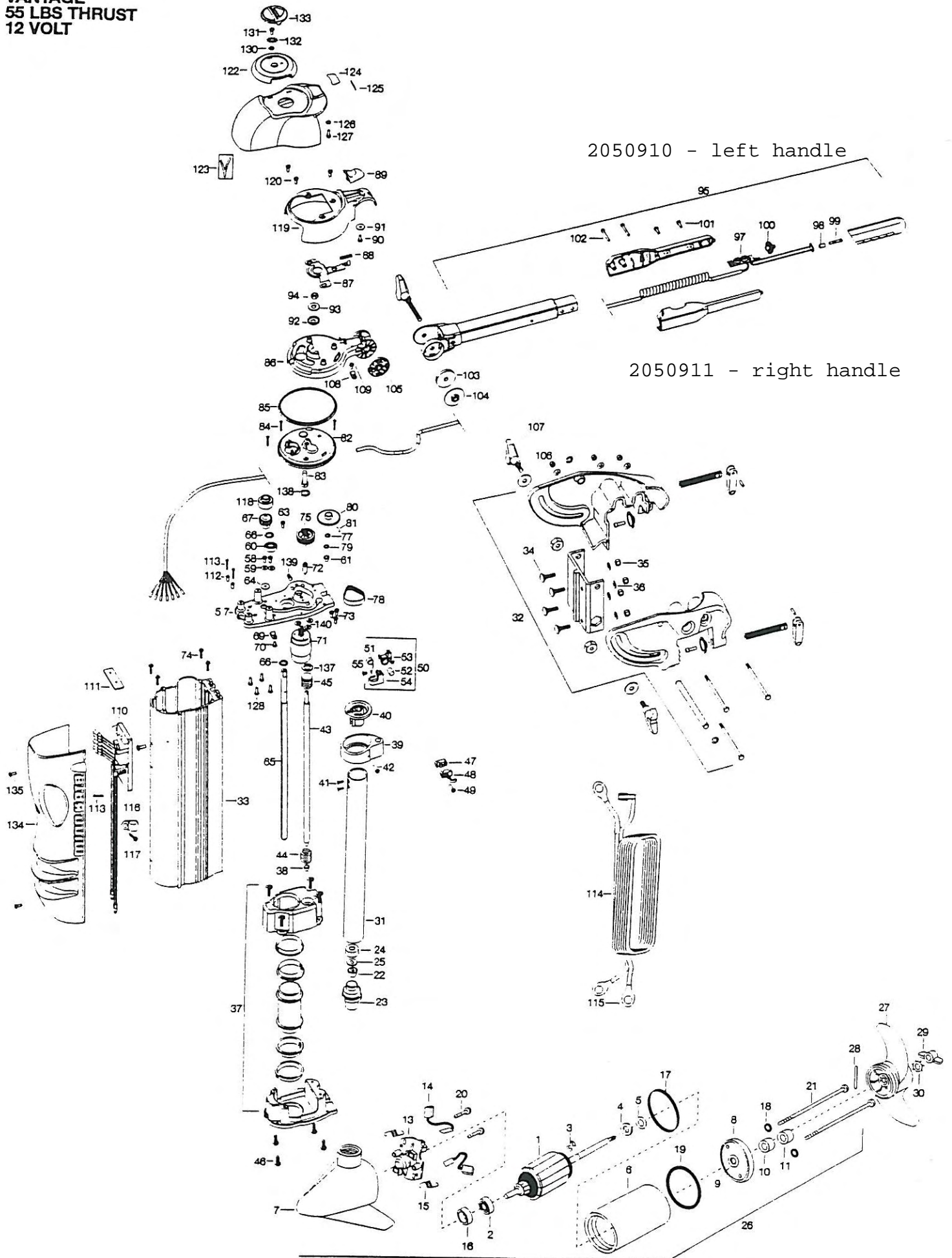


VANTAGE
55 LBS THRUST
12 VOLT



1	2-100-013	ARMATURE ASSEMBLY 12V 3.625" FW #55	47	2053200	WIRE CLAMP, LEFTHAND	97	2994005	CTRL BOARD ASSEMBLY-HANDLE
2	140-010	BEARING-BALL	48	2053205	WIRE CLAMP, RIGHTHAND	98	2055115	BUTTON SWITCH ACTUATOR
3	788-015	RETAINING RING	49	2053417	SCREW-10-16 X 3/4" TYPE BT, PPH	99	2053700	PLUNGER-ON/OFF
4	990-067	WASHER-STEEL THRUST	50	2990400	TAPE SPRING ASSEMBLY (VANTAGE	100	2050101	KNOB-SPEED CONTROL
5	990-070	WASHER-NYLATRON	51	2052705	SPRING, CONSTANT FORCE	101	2012100	SCREW-8-18 X 5/8" THD CUT (2 REQ'D)
6	431-101	CENTER HOUSING ASSEMBLY 3.62 FW	52	2052610	PIN-PIVOT 7/16" O.D.	102	2053412	SCREW 8 X 1.5" TYPE 25 (2 REQ'D)
7	421-065	BRUSH END HOUSING	53	2051920	BRACKET-SPRING	103	2051736	WASHER-SPACER ID .4 X OD 1
8	2-400-101	PLAIN END HOUSING ASSEMBLY 3.62	54	2052305	WIRE GUIDE (VANTAGE)	104	2053115	NUT-WASHER HANDLE ASSEMBLY
9	144-049	BEARING-FLANGE	55	2053418	SCREW-#4-40 X 1/4" TYPE F PPH	105	2050015	RACHET-DISK HANDLE ASSEMBLY
10	880-003	SEAL	57	2991927	TOP PLATE/BEARING ASSEMBLY	106	2051737	WASHER-FLAT ID .406 X OD .8
11	880-006	SEAL W/SHIELD	58	2053414	SCREW-#8-32 X 1/2" TRI-LOBE (2 REQ'D)	107	2050921	HANDLE, TENSION, LONG
13	738-036	BRUSH PLATEW/HOLDER	59	2051717	WASHER-#8 SAE FLAT (2 REQ'D)	108	2052511	CABLE CLAMP 1/4" (2 REQ'D)
14	186-036	BRUSH (2 REQ'D)	60	2057306	BEARING-BALL (VANTAGE)	109	2053415	SCREW-8-32 X 3/8" TRI-LOBE (3 REQ'D)
15	975-040	SPRING-TORSION (2 REQ'D)	61	2057302	BEARING-UPPER, LIFT SCREW	110	2054035	CNTRL BOARD ASSEMBY, 12V-MAIN
16	725-050	BRUSH RETENTION-PAPER TUBE	63	2053415	SCREW-#8-32 X 3/8 TRI-LOBE	111	2315105	INSULATING PAD
17	337-036	GASKET	64	2051716	WASHER-FENDER #10	112	2261712	WASHER-SHOULDER MAX (2 REQ'D)
18	701-008	O-RING-THRU BOLT (2 REQ'D)	65	2052000	SHAFT-STEERING, VANTAGE	113	2053407	SCREW-#8-32 X .75 PPH (3 REQ'D)
19	701-081	O-RING (2 REQ'D)	66	2051706	WASHER-SPRING SUPPORT (2 REQ'D)	114	2051225	LEADWIRE, 12V, 3 CONDUCTOR
20	830-007	SCREW #8-32 (2 REQ'D)	67	2052205	GEAR, STEERING TUBE MACHINED	115	2020700	TERMINAL RING, 3/8" (2 REQ'D)
21	830-042	THRU BOLT 10-32 X 8.83 (2 REQ'D)	69	2052510	CABLE CLAMP, 3/16" VANTAGE	116	2052512	CABLE CLAMP, 1/2" VANTAGE
22	1389-015	GROMMET-STRAIN RELIEF	70	2053415	SCREW-#8-32 X 3/8" TRI-LOBE	117	2053415	SCREW-#8-32 X 3/8" TRI-LOB
23	979-015	STRAIN RELIEF-BODY	71	2057801	MOTOR-LIFT (12/24, 36V) VANTAGE	118	2052210	ROLLER-STEERING SHAFT
24	979-016	CAP-STRAIN RELIEF	72	2058411	TENSIONER-BELT (VANTAGE)	119	2050200	COVER-CONTROL HEAD
25	990-015	WASHER-MTR SEAL	73	2053422	SCREW-M3 .5 X 10 PPH ZPS (3 REQ'D)	120	2053415	SCREW-8-32 X 3/8" T-LOBE (3 REQ'D)
26	2099071	MOTOR ASSEMBLY 3.625 12V VARS FW	74	2053413	SCREW-10-16 X 1" TYPE AB, HEX (4 REQ'D)	121	2012100	SCREW-8-18 X 5/8" THD (3 REQ'D)
■	1378122	PROPELLER KIT	75	2772202	CLUSTER GEAR ASSEMBLY	122	2050210	SHROUD-CONTROL HEAD
*27	2091150	PROPELLER (W. WEDGE) T PROS	77	2051703	WASHER-THRUST ID .315 OD .562	123	2055612	DECAL-SHROUD (VNTGE) (2 REQ'D)
*28	2092600	PIN-DRIVE SS	78	2050800	BELT-DRIVE (VANTAGE) Lift Belt	124	2055603	DECAL-COVER, 12V 55#
*29	2053101	NUT-NYLOC 5/16 STD SS	79	2051705	WASHER-NYLON ID .312	125	2055610	DECAL-COVER LED
*30	2151726	WASHER-5/16 STD SS	80	2990426	LIFT GEAR ASSEMBLY	126	2051712	WASHER-BULB .152 ID .50 OD .06
31	2052010	TUBE-MOTOR, 1-3/4"	81	2052620	PIN-DRIV-LOK 1/8 X 5/8"	127	2302100	SCREW-6-20 X 1/2" THD CUT
32	2991820	TRANSOM BRACKET ASSEMBLY	82	2996515	GEAR HOUSING/BEARING ASSEMBLY	128	2012100	SCREW-8-18 X 5/8" THD (4 REQ'D)
33	2056505	HOUSING EXTRUSION, MACHINE	83	2383500	BOLT-3/8-16 X 1.25	129	2050100	KNOB-POINTER, VANTAGE
34	2053511	BOLT-CARRIAGE 5/16-18 1" (4 REQ'D)	84	2053402	SCREW-10-24 X 1" TRI-LOBE (3 REQ'D)	130	2051717	WASHER-FOR #8 SCREW
35	2151726	WASHER-5/16 STD SS (4 REQ'D)	85	2054600	O-RING, GEAR HOUSING	131	2332101	SCREW-8-32 X 1/2" SS
36	2053103	NUT, 5/16-18 NYLOC (4 REQ'D)	86	2056510	CAP-UPPER, GEAR HOUSING	132	2371715	LOCKWASHER-STAR #8 ZINC
37	2990420	LOWER SUPPORT CAGE ASSEMBLY	87	2057200	LATCH (VANTAGE)	133	2056700	PLUG, POINTER, VANTAGE
38	2057302	BEARING-UPPER, LIFT SCREW	88	2052711	SPRING, LATCH RETURN	134	2050220A	SHIELD-EXTRUSION, VANTAGE 12V
39	2051510	YOKE-LIFT SCREW	89	2050102	KNOB-LATCH (VANTAGE)	135	2053414	SCREW-#8-32 X 1/2" TRI-L (2 REQ'D)
40	2056200	BEARING RACE-YOKE	90	2353401	SCREW-10-16 X 1/2" STALGDT	136	2055611	DECAL-SHIELD (VANTAGE)
41	2053401	SCREW-10 X 1/2" TYPE 25 2 REQ'D)	91	2051716	WASHER-FENDER #10	137	2151726	WASHER-5/16 STD SS
42	2353401	SCREW-10-16 X 1/2" STALGD	92	2151730	WASHER-CUP (HINGE BRACKET)	138	2051732	WASHER-ID 195 X .278
43	2053400	SCREW-LIFT 1/2-10 ACME	93	2051737	WASHER-.406 X OD .875 FLAT (ZINC)	139	2053420	SET SCREW-#8-32 X 1/4
44	2052707	SPRING-COIL SOFT STOP	94	2053107	NUT-3/8-16", TOPLOCK	140	2051710	LOCKWASHER-SPLIT 3MM (3 REQ'D)
45	2990429	COIL SPRING/WASHER ASSEMBLY	95	2990950	HANDLE/CTRL BOARD ASSEMBLY			
46	2053413	SCREW-10-16X1" TYPE AB,HEX (4 REQ'D)	96	2990920	HANDLE ASSEMBLY, VANTAGE			

* This item is part of an assembly. This item cannot be sold separately due to machining and /or assembly that is required

Vantage Series Wiring Diagrams

V55
12-volt

