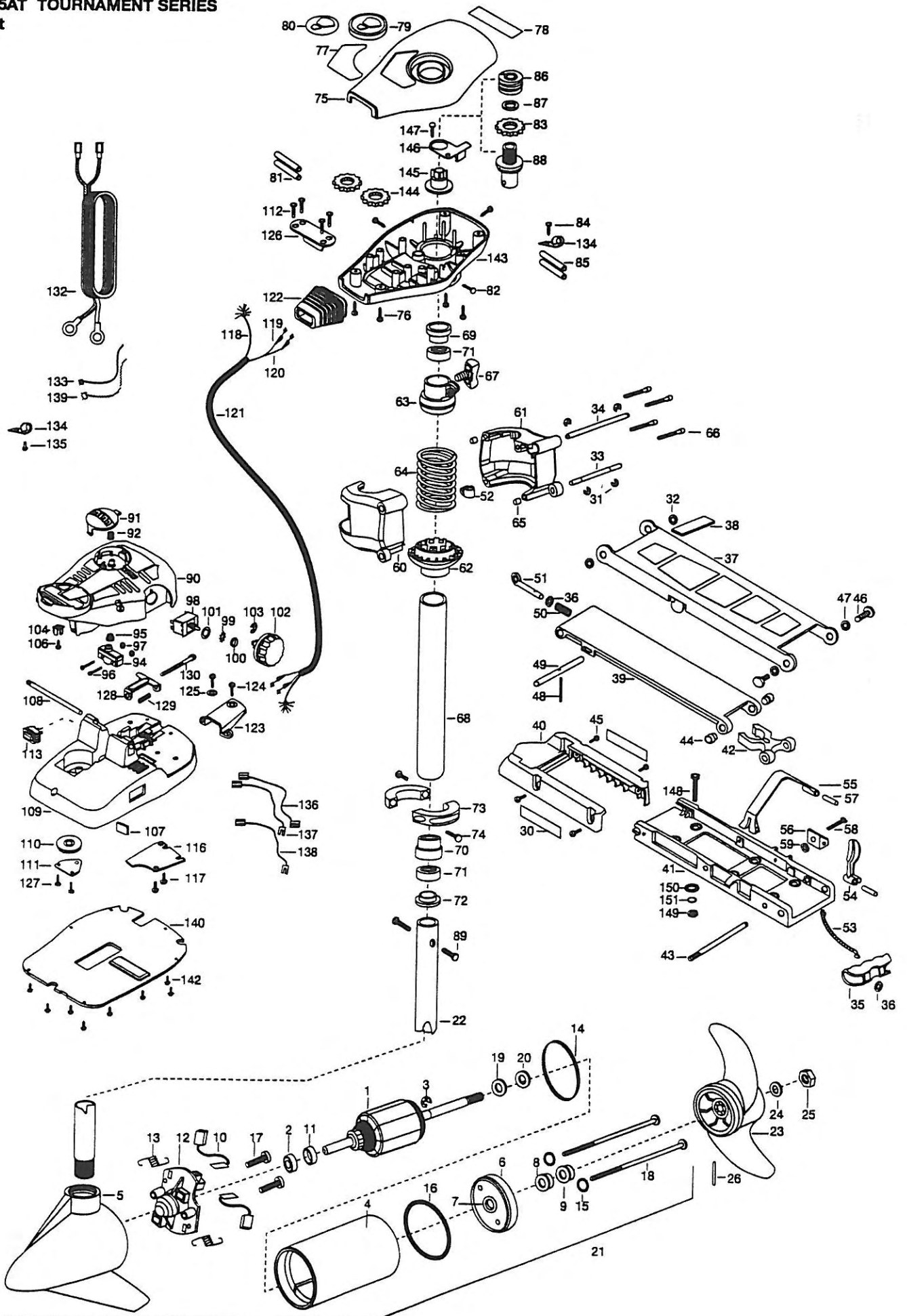


**CABELA'S 65AT TOURNAMENT SERIES**

**65 lbs Thrust**

**24Volt**

**42" Shaft**

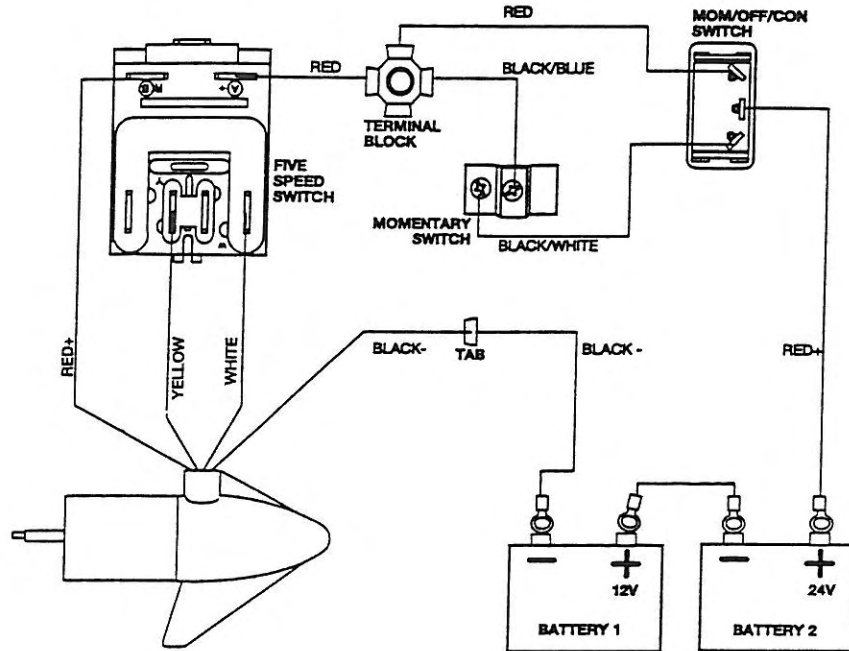


1	2-100-009	ARMATURE ASSEMBLY 24V 3.625 65#	52	2262310	GUIDE-ROPE	101	2261715	SPACER-SWITCH 5 SP MODELS
2	140-010	BEARING-BALL	53	2251600	ROPE- 31'	102	2260170	KNOB-SPEED CONTROL 5 SPD
3	788-015	RETAINING RING	54	2262700	LATCH LEVER	103	2263000	E-RING TRU-ARC
4	431-005	CENTER HOUSING ASSEMBLY	55	2263800	STRAP-HOLD DOWN	104	2260730	CONNECTOR 1/4 MALE TAB
5	2-300-039	BRUSH END HOUSING ASSEMBLY SPD CO	56	2261910	BRACKET HOLD DOWN STRAP	106	2332103	SCREW-6-20 X 3/8 THD SS
6	2-400-101	PLAIN END HOUSING ASSEMBLY	57	2260500	PIN-ROLL LATCH LEVER [2.EA]	107	2266413	TENSION SCREW PLATE- FT PED
7	144-049	BEARING- FLANGE SERVICE ONLY	58	2263440	SCREW-10-24 X 3/4	108	2060511	PIN- PIVOT A/T FT PDL
8	880-003	SEAL	59	2333101	NUT-HEX 10-24 NYLOC	109	2992103	FT PED BASE/PIN ASSEMBLY
9	880-008	SEAL-W/SHIELD	■	2991844	BOWGUARD ASSEMBLY FW 360	110	2262301	PULLEY FOOT PEDAL
10	188-036	BRUSH ASSEMBLY [2.EA]	60	2261921	BRACKET BASE-LEFT	111	2266400	COVER-PULLEY STAMPING
11	725-050	TUBE- BRUSH RETENTION	61	2261931	BRACKET BASE-RGHT	112	2223430	SCREW #8 X 3/4 PPH TYPE 25 [4.EA]
12	738-036	BRUSH PLATE WITH HOLDER	62	2261535	SPRING SLEEVE, LOWER	113	2254031	SWITCH-MOM/OFF/COM
13	975-040	SPRING- TORSION [2.EA]	63	2261525	SPRING-SLEEVE UPPER	116	2266412	SWITCH PLATE, FT PEDAL
14	337-036	GASKET	64	2262706	SPRING, BOWGUARD, NIK PL	117	2332103	SCREW-6-20 X 3/8 THD SS [2.EA]
15	701-008	O-RING THRU BOLT [2.EA]	65	2267300	BUSHING-DOWEL [2.EA]	118	2261208	WIRE HARNESS, A/T FT. PED
16	701-081	O-RING	66	2263470	SCREW-1/4-20 X 1-3/4 SS [4.EA]	119	2267500	CABLE ASSEMBLY-RIGHT 5'
17	830-007	#8-32 SCREW [2.EA]	67	2011365	SCREW-COLLAR/NEW KNOB	120	2267510	CABLE ASSEMBLY-LEFT 5'
18	830-008	THRU BOLT 10-32 X 9.205 [2.EA]	■	2992015	TUBE W/BEARING RACE ASSEMBLY	121	2265430	CABLE JACKET 5'
19	990-067	WASHER- STEEL THRUST	68	2272066	TUBE OUTER-18" 4 HOLES	122	2265110	BOOT-CONTROL BOX
20	990-070	WASHER-NYLATRON [2.EA]	69	2266260	BEARING RACE	123	2265115	BOOT-FOOT PEDAL BASE
21	2098034	MOTOR ASSEMBLY 24V 3.62 5 SPC FW 65#	70	2266220	BEARING RACE-STEEL	124	2372100	SCREW-8-18 X 5/8 THD [2.EA]
22	2032063	TUBE- COMPW/CSK HOLE-42"	71	2266000	BEARING BALL-STEEL [2.EA]	125	2261714	WASHER-MAXXUM FT PDL [2.EA]
■	1378122	PROPELLER KIT	72	2266115	BEARING CONE	126	2261901	BRACKET-CONDUIT AT/MAX
23	2091150	PROPELLER- W/WEDGE	73	2261621	COLLAR HALF-ALUM-2 PER	127	2301310	SCREW-8-18 X 1/2 [2.EA]
24	2151726	WASHER- 5/16 SS	74	2263452	SCREW-1/4-20 X 3/4 [2.EA]	128	2263210	BRACKET-CONDUIT ADJUSTMENT
25	2053101	NUT-PROP NYLOC MEDIUM	75	2260268	COVER-CTR BOX AT GREY	129	2262720	SPRING-CONDUIT ADJUSTMENT
26	2092600	PIN-DRIVE 95-4HP'S	76	2372100	SCREW-8-18 X 5/8 THD SS [4.EA]	130	2263463	SCREW-1/4-20 X 2 STL PPH
30	2005601	DECAL- CABELA'S TOUR SERIES	77	2265659	DECAL-COVER 65AT/FC CABELA	132	2261225	LEADWIRE - BATTERY
31	2263010	E-RING 3/8 DIA. SHAFT [4.EA]	78	2005601	DECAL- CABEL'S TOUR SERIES	133	2266300	TIE WRAP-5.5" BLACK
32	2293500	BUSHING-SHOULDER UPPER ARM [2.EA]	79	2260150	POINTER DISC TRNSLCNT RED	134	2263201	CLAMP WIRE HARNESS MICRO [2.EA]
33	2260530	HINGE PIN-LOWER SS	80	2265800	DECAL-INDICATOR	135	2332103	SCREW-6-20 X 3/8 THD SS
34	2260520	HINGE PIN-UPPER	81	2375400	SHRINK TUBE-1/4OD X 1-3/4 [2.EA]	136	2260301	CONNECTING WIRE SWITCH
35	2150400	PULL-GRIP	82	2053414	SCREW-#8-32 X 1/2 TRI-LOBE [3.EA]	137	2260312	WIRE,BLK W/WHT STRP 19 1/2"
36	2151700	WASHER-EYE SHAFT.562 OD	83	2267800	GEAR-INDICATOR	138	2260322	WIRE,BLK W/BLUE STRP-12"
■	2771987	BOW MOUNT ASSEMBLY 65 A/T FW	84	2301310	SCREW-8-18 X 1/2	139	2256301	TIE WRAP-5.5" WHITE
37	2264221	ARM-UPPER STD FW	85	2355410	SHRINK TUBE-3/8 OD X 2 [2.EA]	140	2266414	BOTTOM PLATE MAX FOOT PEDAL
38	2265120	BUMPER- UPPER ARM	86	2232360	PULLEY-CABLE DRUM	142	9953104	SCREW-8 X 1/2 S/S [8.EA]
39	2254353	ARM- LWR FW MCHD	87	2261730	WASHER-NYLON A/T CON B	143	2262535	CONTROL BOX-PLASTIC A/Ts
40	2263900	MOTOR REST- AT	88	2776246	TOP BEARING RACE /PINION DRIVE	144	2267800	GEAR-INDICATOR [2.EA]
41	2251922	BOW PLATE- MCHD	89	2263410	SCREW-8-32 X 5/16 ZN PL [2.EA]	145	2262220	INDICATOR-DRIVE
42	2293801	TUBE LOCK-D	90	2790002	FOOT PEDAL/PLUG ASSEMBLY AT	146	2261905	BRACKET/INDICATOR
43	2260506	HINGE-PIN HEADLESS ZINC	91	2263700	PUSH-BUTTON FOOT PEDAL	147	2301310	SCREW-8-18 X 1/2 SS
44	2236000	BEARING NYLINER- [2.EA]	92	2302732	SPRING-LOWER PEDAL SS	■	2994811	BAG ASSEMBLY-BOLTS, NUTS, WASHER
45	2303431	SCREW 1/4-20 X 5/8 PPH [4.EA]	94	2264020	SWITCH MOMENTARY	148	2153501	BOLT-MOUNTING-3500 W/STGD [8.EA]
46	2293511	BOLT-UPPER ARM W/LOCTITE [2.EA]	95	2265140	BOOT-MICROSWITCH	149	2153100	NUT-5/16-18NC MOUNTING [8.EA]
47	2293500	BUSHING-SHOULDER UPPER ARM [2.EA]	96	2262114	SCREW-MOUNTING/SWITCH [2.EA]	150	2301720	WASHER- MOUNTING RUBBER [8.EA]
48	2152610	SPRING-PIN LOCKBAR	97	2233100	NUT-SWITCH MOUNT [2.EA]	151	2151726	WASHER-5/16 STD SS [8.EA]
49	2233600	LOCK BAR- BOW MOUNT	98	2264026	SWITCH-5 SPEED AT			
50	2152700	SPRING-LOCKBAR CAD. PLTD	99	2261701	LOCKWASHER -STAR			
51	2153600	EYE SHAFT-CAD. PLATE	100	2263105	NUT-HEX			

\* This item is part of an assembly. This item cannot be sold separately due to machining and /or assembly that is required.

# All Terrain Bowmount Series Wiring Diagrams

## 65AT Tournament Series 24-volt (foot-control)



## 65AT & 65AT Tournament 12/24 12/24-volt (foot-control)

