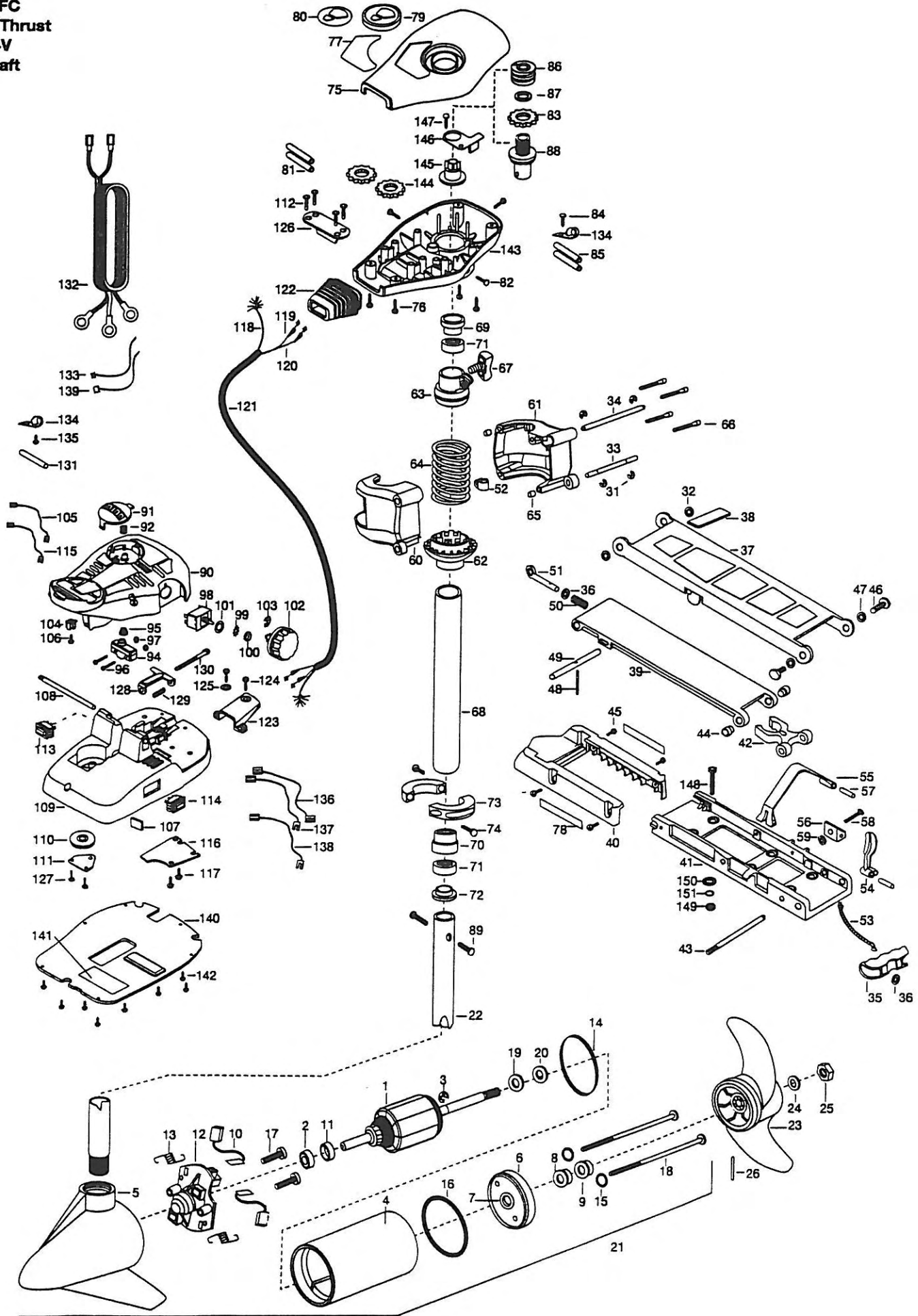


65AT/FC
65 lbs Thrust
12V/24V
42" Shaft



1	2-100-009	ARMATURE ASSEMBLY 24V 3.625 65#	53	2251600	ROPE- 31'	103	2263000	E-RING TRU-ARC
2	140-010	BEARING-BALL	54	2267200	LATCH LEVER	104	2260730	CONNECTOR 1/4 MALE TAB
3	788-015	RETAINING RING	55	2263800	STRAP-HOLD DOWN	105	2260315	CONNECTING WIRE-7-1/2"
4	431-005	CENTER HOUSING ASSEMBLY	56	2261910	BRACKET HOLD DOWN STRAP	106	2332103	SCREW-6-20 X 3/8 THD SS
5	2-300-039	BRUSH END HOUSING 3.625 SPD CO	57	2260500	PIN-ROLL LATCH LEVER [2.EA]	107	2266413	TENSION SCREW PLATE- FT PED
6	2-400-101	PLAIN END HOUSINGASSEMBLY 3.625	58	2263440	SCREW-10-24 X 3/4	108	2060511	PIN- PIVOT A/T FT PDL
7	144-049	BEARING- FLANGE SERVICE ONLY	59	2333101	NUT-HEX 10-24 NYLOC	109	2992102	FT PED BASE/PIN ASSEMBLY
8	880-003	SEAL	60	2261921	BRACKET BASE-LEFT	110	2262301	PULLEY FOOT PEDAL
9	880-006	SEAL-W/SHIELD	61	2261931	BRACKET BASE-RGHT	111	2266400	COVER-PULLEY STAMPING
10	188-036	BRUSH ASSEMBLY [2.EA]	62	2281535	SPRING SLEEVE, LOWER	112	2223430	SCREW #8 X 3/4 PPH TYPE 25 [4.EA]
11	725-050	TUBE- BRUSH RETENTION	63	2261525	SPRING-SLEEVE UPPER	113	2254031	SWITCH-MOM/OFF/COM
12	738-036	BRUSH PLATE WITH HOLDER	64	2262706	SPRING, BOWGUARD, NIK PL	114	2254032	SWITCH-12V/OFF/24V 65AT
13	975-040	SPRING- TORSION [2.EA]	65	2267300	BUSHING-DOWEL [2.EA]	115	2260300	CONNECTING WIRE-14"
14	337-036	GASKET	66	2263470	SCREW-1/4-20 X 1-3/4 SS [4.EA]	116	2266412	SWITCH PLATE, FT PEDAL
15	701-008	O-RING THRU BOLT [2.EA]	67	2011365	SCREW-COLLAR/NEW KNOB	117	2332103	SCREW-6-20 X 3/8 THD SS [2.EA]
16	701-081	O-RING	■	2992015	TUBE W/BEARING RACE ASSEMBLY	118	2261208	WIRE HARNESS, A/T FT. PED
17	830-007	#8-32 SCREW [2.EA]	68	2272066	TUBE OUTER-18' 4 HOLES	119	2267500	CABLE ASSEMBLY-RIGHT 5'
18	830-008	THRU BOLT 10-32 X 9.205 [2.EA]	69	2266260	BEARING RACE	120	2267510	CABLE ASSEMBLY-LEFT 5'
19	990-067	WASHER- STEEL THRUST	70	2266220	BEARING RACE-STEEL	121	2265430	CABLE JACKET 5"
20	990-070	WASHER-NYLATRON [2.EA]	71	2266000	BEARING BALL-STEEL [2.EA]	122	2265110	BOOT-CONTROL BOX
21	2098034	MOTOR ASSEMBLY 24V 3.625 5SPC FW	72	2266115	BEARING CONE	123	2265115	BOOT-FOOT PEDAL BASE
22	2032063	TUBE- COMPW/CSK HOLE-42"	73	2261619	COLLAR HALF-ZINC-2 PER	124	2372100	SCREW-8-18 X 5/8 THD [2.EA]
■	1378122	PROPELLER KIT	74	2263452	SCREW-1/4-20 X 3/4 [2.EA]	125	2261714	WASHER-MAXXUM FT PDL [2.EA]
23	2091150	PROPELLER- W/WEDGE	75	2260284	COVER- CONTROL BOX AT/FC BLK	126	2261901	BRACKET-CONDUIT AT/MAX
24	2151726	WASHER- 5/16 SS	76	2372100	SCREW-8-18 X 5/8 THD SS [4.EA]	127	2301310	SCREW-8-18 X 1/2 [2.EA]
25	2053101	NUT-PROP NYLOC MEDIUM	77	2265516	DECAL -COVER 65AT	128	2263210	BRACKET-CONDUIT ADJUSTMENT
26	2092600	PIN-DRIVE 95-4HP'S	78	2265631	DECAL - MOTOR REST [2.EA]	129	2262720	SPRING-CONDUIT ADJUSTMENT
31	2263010	E-RING 3/8 DIA. SHAFT [4.EA]	79	2260150	POINTER DISC TRNSLCNT RED	130	2263463	SCREW-1/4-20 X 2 STL PPH
32	2283500	BUSHING-SHOULDER UPPER ARM [2.EA]	80	2265800	DECAL-INDICATOR	131	2335400	SHRINK TUBE-1/2 OD X 2
33	2260530	HINGE PIN-LOWER SS	81	2375400	SHRINK TUBE-1/4OD X 1-3/4 [2.EA]	132	2090611	LEADWIRE 12/24V
34	2260520	HINGE PIN-UPPER	82	2053414	SCREW-#8-32 X 1/2 TRI-LOBE [3.EA]	133	2256300	TIE WRAP-5.5' BLACK
35	2150400	PULL-GRIP	83	2267800	GEAR-INDICATOR	134	2283201	CLAMP WIRE HARNESS MICRO [2.EA]
36	2151700	WASHER-EYE SHAFT.582 OD	84	2301310	SCREW-8-18 X 1/2	135	2332103	SCREW-6-20 X 3/8 THD SS
■	2771987	BOW MOUNT ASSEMBLY 55/65AT FW	85	2355410	SHRINK TUBE-3/8 OD X 2 [2.EA]	136	2260301	CONNECTING WIRE SWITCH
37	2264221	ARM-UPPER STD FW	86	2232360	PULLEY-CABLE DRUM	137	2260312	WIRE,BLK W/WHT STRP 19 1/2"
38	2265120	BUMPER- UPPER ARM	87	2261730	WASHER-NYLON A/T CON B	138	2260322	WIRE,BLK W/BLUE STRP-12"
39	2254353	ARM- LWR FW MCHD	88	2776246	TOP BEARING RACE /PINION DRIVE	139	2256301	TIE WRAP-5.5" WHITE
40	2263900	MOTOR REST	89	2263410	SCREW-8-32 X 5/16 ZN PL [2.EA]	140	2266414	BOTTOM PLATE A/T FOOT
41	2251922	BOW PLATE-D/C MCHD	90	2790002	FOOT PEDAL/PLUG ASSEMBLY AT	141	2365107	INSULATING PAD 2.3 X 3.2
42	2293801	TUBE LOCK-D	91	2263700	PUSH-BUTTON FOOT PEDAL	142	9953104	SCREW-8 X 1/2 S/S [8.EA]
43	2260506	HINGE-PIN HEADLESS ZINC	92	2302732	SPRING-LOWER PEDAL SS	143	2262535	CONTROL BOX-PLASTIC A/T ₈
44	2236000	BEARING NYLINER- [2.EA]	94	2264020	SWITCH MOMENTARY	144	2267800	GEAR-INDICATOR [2.EA]
45	2303431	SCREW 1/4-20 X 5/8 PPH [4.EA]	95	2265140	BOOT-MICROSWITCH	145	2262220	INDICATOR-DRIVE
46	2293511	BOLT-UPPER ARM W/LOCTITE [2.EA]	96	2262114	SCREW-MOUNTING/SWITCH [2.EA]	146	2261905	BRACKET/INDICATOR
47	2293500	BUSHING-SHOULDER UPPER ARM [2.EA]	97	2233100	NUT-SWITCH MOUNT [2.EA]	147	2301310	SCREW-8-18 X 1/2 SS
48	2152610	SPRING-PIN LOCKBAR	98	2264026	SWITCH-5 SPEED AT	■	2994838	BAG ASSEMBLY-BOLTS,NUTS,WASHER
49	2233600	LOCK BAR- BOW MOUNT	99	2261701	LOCKWASHER -STAR	*148	2263462	SCREW- 14-20 X 2 SS [6.EA]
50	2152700	SPRING-LOCKBAR CAD.PLTD	100	2263105	NUT-HEX	*149	2153103	NUT- 1/4-20 NYLOC JAM [6.EA]
51	2153600	EYE SHAFT-CAD.PLATE	101	2261715	SPACER-SWITCH 5 SP MODELS	*150	2301720	WASHER- MOUNTING RUBBER [6.EA]
52	2262310	GUIDE-ROPE	102	2260170	KNOB-SPEED CONTROL 5 SPD	*151	2261713	WASHER- 1/4 FLAT 18-18 [6.EA]

* This item is part of an assembly. This item cannot be sold separately due to machining and /or assembly that is required.

65AT & 65AT Tournament 12/24 12/24-volt (foot-control)

