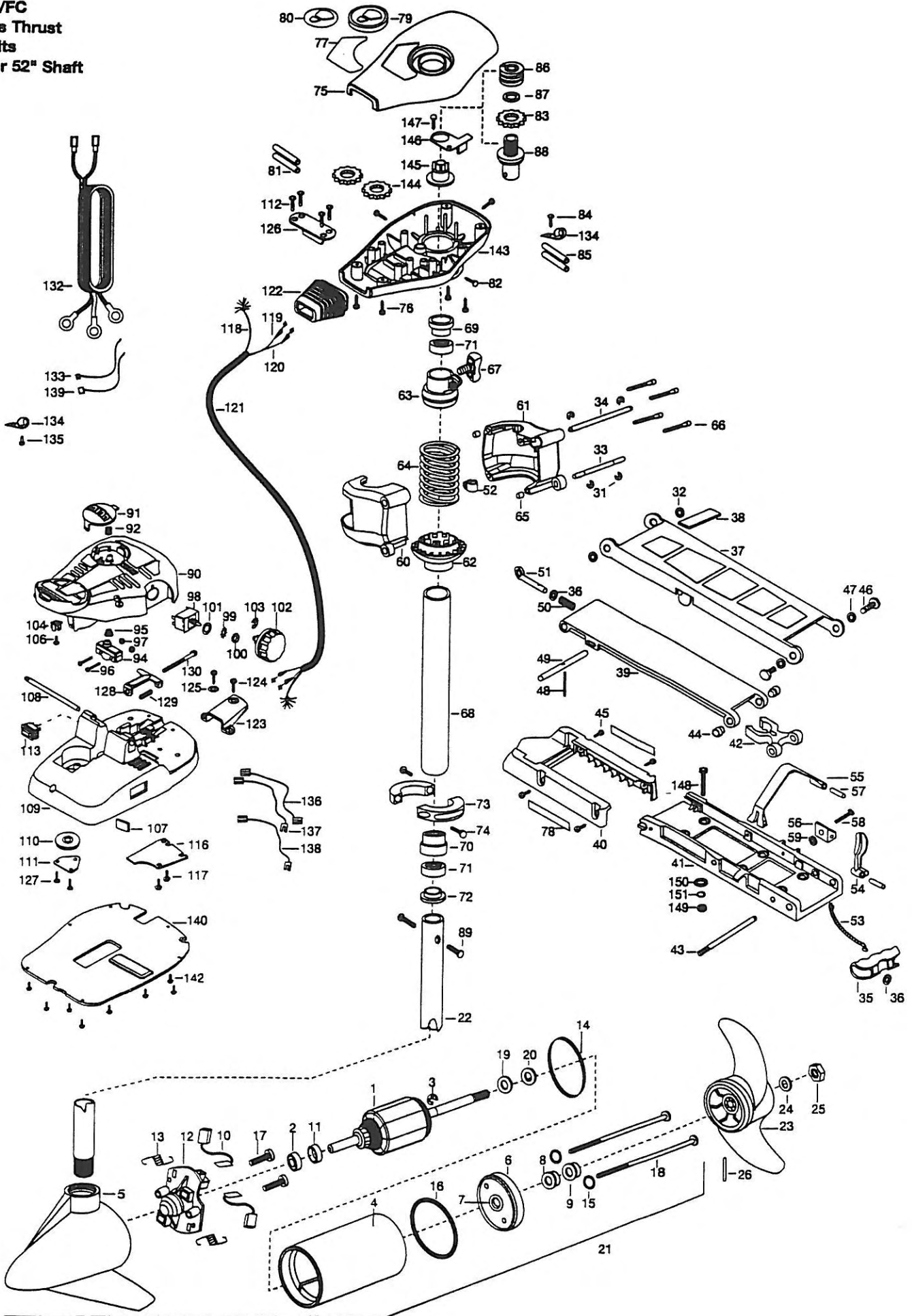


55AT/FC  
55 lbs Thrust  
12Volts  
42" or 52" Shaft



1	2-100-013	ARMATURE ASSEMBLY 12V 3.625 55#	51	2153600	EYE SHAFT-CAD.PLATE	99	2261701	LOCKWASHER -STAR
2	140-010	BEARING-BALL	52	2262310	GUIDE-ROPE	100	2263105	NUT-HEX 3/8-24 JAM
3	788-015	RETAINING RING	53	2251600	ROPE- 31'	101	2261715	SPACER-SWITCH 5 SP MODELS
4	431-101	CENTER HOUSING ASSEMBLY	54	2267200	LATCH LEVER	102	2260170	KNOB-SPEED CONTROL 5 SPD
5	2-300-198	BRUSH END HOUSING ASSEMBLY 3.625 SPD CO	55	2263800	STRAP-HOLD DOWN	103	2263000	E-RING TRU-ARC
6	2-400-101	PLAIN END HOUSINGASSEMBLY 3.625	56	2261910	BRACKET HOLD DOWN STRAP	104	2260730	CONNECTOR 1/4 MALE TAB
7	144-049	BEARING- FLANGE SERVICE ONLY	57	2260500	PIN-ROLL LATCH LEVER [2.EA]	106	2332103	SCREW-6-20 X 3/8 THD SS
8	880-003	SEAL	58	2263440	SCREW-10-24 X 3/4	107	2268413	TENSION SCREW PLATE- FTPED
9	880-006	SEAL-W/SHIELD	59	2333101	NUT-HEX 10-24 NYLOC	108	2060511	PIN- PIVOT A/T FT PDL
10	188-036	BRUSH ASSEMBLY [2.EA]	60	2261921	BRACKET BASE-LEFT	109	2992102	FT PED BASE/PIN ASSEMBLY
11	725-050	TUBE- BRUSH RETENTION	61	2261931	BRACKET BASE-RGHT	110	2262301	PULLEY FOOT PEDAL
12	738-036	BRUSH PLATE WITH HOLDER	62	2261535	SPRING SLEEVE, LOWER	111	2266400	COVER-PULLEY STAMPING
13	975-040	SPRING- TORSION [2.EA]	63	2261525	SPRING-SLEEVE UPPER	112	2223430	SCREW #8 X 3/4 PPH TYPE 25 [4.EA]
14	337-036	GASKET	64	2262706	SPRING, BOWGUARD, NIK PL	113	2254031	SWITCH-MOM/OFF/COM
15	701-008	O-RING THRU BOLT [2.EA]	65	2267300	BUSHING-DOWEL [2.EA]	116	2268412	SWITCH PLATE, FT PEDAL
16	701-081	O-RING	66	2263470	SCREW-1/4-20 X 1-3/4 SS [4.EA]	117	2332103	SCREW-6-20 X 3/8 THD SS [2.EA]
17	830-007	#8-32 SCREW [2.EA]	67	2011365	SCREW-COLLAR/NEW KNOB	118	2261208	WIRE HARNESS, A/T FT. PED
18	830-008	THRU BOLT 10-32 X 9.205 [2.EA]	68	2272066	TUBE W/BEARING RACE ASSEMBLY	119	2267500	CABLE ASSEMBLY-RIGHT 5'
19	990-067	WASHER- STEEL THRUST		2272067	TUBE OUTER-18' 4 HOLES	120	2267510	CABLE ASSEMBLY-LEFT 5'
20	990-070	WASHER-NYLATRON [2.EA]	69	2266260	TUBE OUTER-24' 4 HOLES	121	2265430	CABLE JACKET 5"
21	2099092	MOTOR ASSEMBLY 12V 3.625 5SPD FW 55#	70	2266220	BEARING RACE	122	2265110	BOOT-CONTROL BOX
22	2032063	TUBE- COMPW/CSK HOLE-42"	71	2266000	BEARING RACE-STEEL	123	2265115	BOOT-FOOT PEDAL BASE
	2032067	TUBE- COMPW/CSK HOLE-52"	72	2266115	BEARING BALL-STEEL [2.EA]	124	2372100	SCREW-8-18 X 5/8 THD [2.EA]
	1378122	PROPELLER KIT	73	2261619	BEARING CONE	125	2261714	WASHER-MAXXUM FT PDL [2.EA]
23	2091150	PROPELLER- W/WEDGE	74	2263452	COLLAR HALF-ZINC-2 PER	126	2261901	BRACKET-CONDUIT AT/MAX
24	2151726	WASHER- 5/16 SS	75	2260284	SCREW-1/4-20 X 3/4 [2.EA]	127	2301310	SCREW-8-18 X 1/2 [2.EA]
25	2053101	NUT-PROP NYLOC MEDIUM	76	2372100	COVER- CONTROL BOX AT/FC BLK	128	2263210	BRACKET-CONDUIT ADJUSTMENT
26	2092600	PIN-DRIVE 95-4HP'S	77	2265654	SCREW-8-18 X 5/8 THD SS [4.EA]	129	2262720	SPRING-CONDUIT ADJUSTMENT
31	2263010	E-RING 3/8 DIA. SHAFT [4.EA]	78	2265631	DECAL-COVER 55AT/ F BLK	130	2263463	SCREW-1/4-20 X 2 STL PPH
32	2293500	BUSHING-SHOULDER UPPER ARM [2.EA]	79	2260150	DECAL-MOTOR REST [2.EA]	132	2261225	LEADWIRE BATTERY
33	2260530	HINGE PIN-LOWER SS	80	2265800	POINTER DISC TRNSLNT RED	133	2256300	TIE WRAP-5.5' BLACK
34	2260520	HINGE PIN-UPPER	81	2375400	DECAL- INDICATOR	134	2263201	CLAMP WIRE HARNESS MICRO [2.EA]
35	2150400	PULL-GRIP	82	2053414	SHRINK TUBE-1/4OD X 1-3/4 [2.EA]	135	2332103	SCREW-6-20 X 3/8 THD SS
36	2151700	WASHER-EYE SHAFT.562 OD	83	2267800	SCREW-#8-32 X 1/2 TRI-LOBE [3.EA]	136	2260301	CONNECTING WIRE SWITCH
	2771987	BOW MOUNT ASSEMBLY 55/65AT FW	84	2301310	GEAR-INDICATOR	137	2260312	WIRE,BLK W/WHT STRP 19 1/2"
37	2264221	ARM-UPPER STD FW	85	2355410	SCREW-8-18 X 1/2	138	2260322	WIRE,BLK W/BLUE STRP-12"
38	2265120	BUMPER- UPPER ARM	86	2232360	SHRINK TUBE-3/8 OD X 2 [2.EA]	139	2256301	TIE WRAP-5.5" WHITE
39	2254353	ARM- LWR FW MCHD	87	2261730	PULLEY-CABLE DRUM	140	2266414	BOTTOM PLATE MAX FOOTPEDAL
40	2263900	MOTOR REST AT	88	2776246	WASHER-NYLON A/T CON B	142	9853104	SCREW-8 X 1/2 S/S [6.EA]
41	2251922	BOW PLATE-D/C MCHD	89	2263410	TOP BEARING RACE /PINION DRIVE	143	2262535	CONTROL BOX-PLASTIC A/Tb
42	2293801	TUBE LOCK-D	90	2790002	SCREW-8-32 X 5/16 ZN PL [2.EA]	144	2267800	GEAR-INDICATOR [2.EA]
43	2260506	HINGE-PIN HEADLESS ZINC	91	2263700	FOOT PEDAL/PLUG ASSEMBLY AT	145	2262220	INDICATOR-DRIVE
44	2236000	BEARING NYLINER- [2.EA]	92	2302732	PUSH-BUTTON FOOT PEDAL	146	2261905	BRACKET/INDICATOR
45	2303431	SCREW 1/4-20 X 5/8 PPH [4.EA]	94	2264020	SPRING-LOWER PEDAL SS	147	2301310	SCREW-8-18 X 1/2 SS
46	2293511	BOLT-UPPER ARM W/LOCITTE [2.EA]	95	2265140	SWITCH MOMENTARY		2994838	BAG ASSEMBLY-BOLTS,NUTS,WASHER
47	2293500	BUSHING-SHOULDER UPPER ARM [2.EA]	96	2262114	BOOT-MICROSWITCH	*148	2263462	SCREW- 14-20 X 2 SS [6.EA]
48	2152610	SPRING-PIN LOCKBAR	97	2233100	SCREW-MOUNTING/SWITCH [2.EA]	*149	2153103	NUT- 1/4-20NYLOC JAM [6.EA]
49	2233600	LOCK BAR- BOW MOUNT	98	2264026	NUT-SWITCH MOUNT [2.EA]	*150	2301720	WASHER- MOUNTING RUBBER [6.EA]
50	2152700	SPRING-LOCKBAR CAD.PLTD			SWITCH-5 SPEED AT	*151	2261713	WASHER- 1/4 FLAT 18-18 [6.EA]

\* This Item is part of an assembly. This item cannot be sold separately due to machining and /or assembly that is required.

# All Terrain Bowmount Series Wiring Diagrams

30AT, 36AT, 40AT, & 55AT  
12-volt (foot-control)

