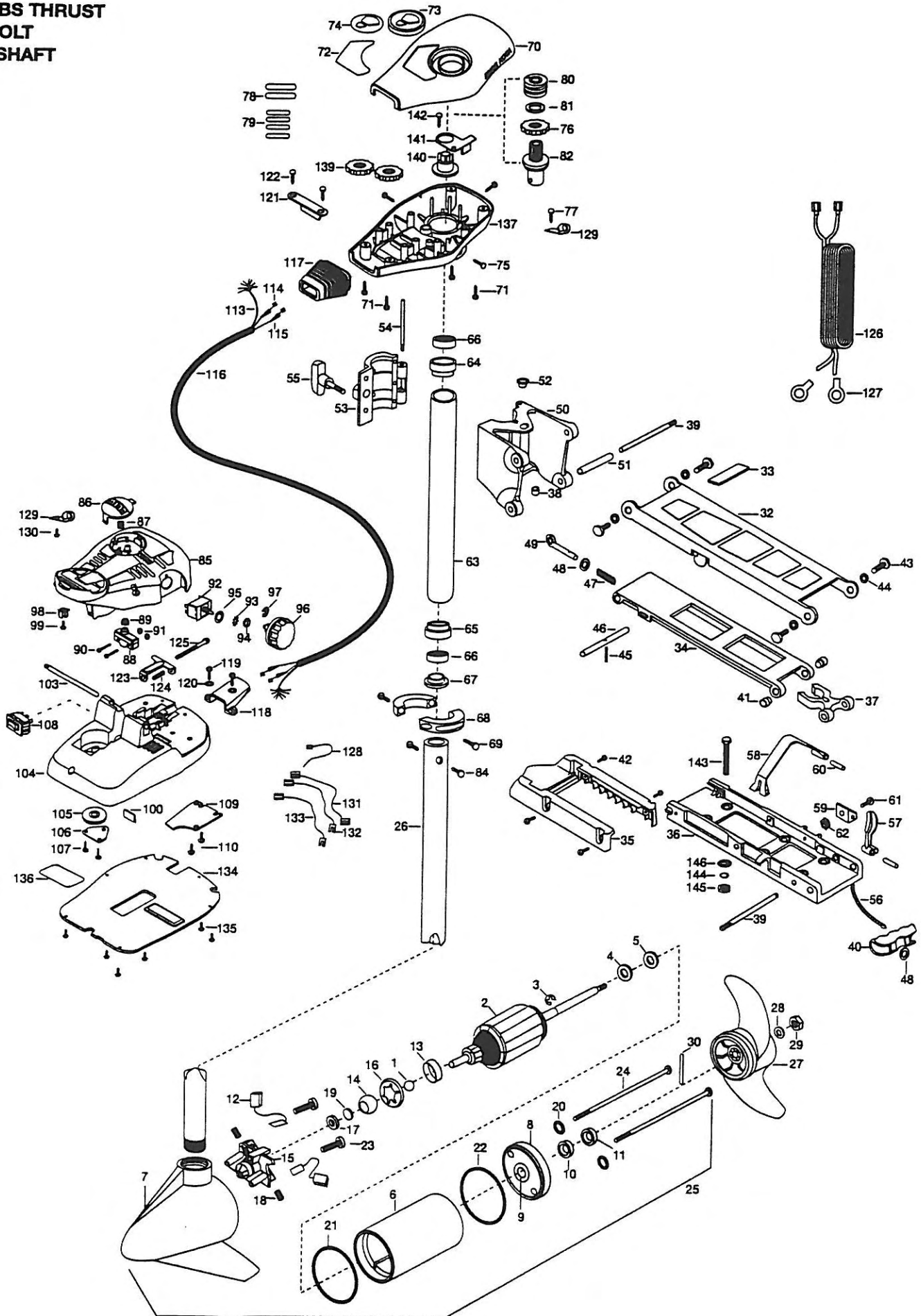


36AT
36 LBS THRUST
12 VOLT
36" SHAFT



1	116-020	BALL - STEEL	47	2152700	SPRING- LOCKBAR CAD.PLT	96	2260170	KNOB-SPEED CONTROL 5 SPD
2	2-100-178	ARM ASSEMBLY 12V 3.25	48	2151700	WASHER-EYE SHAFT .562 OD [2. EA]	97	2263000	E-RING TRU-ARC
3	788-015	RETAINING RING	49	2153600	EYE SHART-CAD.PLATE	98	2260730	CONNECTOR 1/4 MALE TAB
4	990-067	WASHER - STEEL THRUST	50	2261811	HINGE BASE-(F/W)	99	2332103	SCREW-6-20 X 3/8
5	990-070	WASHER - NYLATRON	51	2231570	SLEEVE ROLLER -HINGE BRACKET	100	2266413	TENSION SCREW PLATE FT PEDL
6	431-079	HOUSING ASSEMBLY CENTER 3.25 TXT	52	2232350	EYELET-ROPE	103	2260511	PIN-PIVOT A/T FT PDL
7	2-300-132	HOUSING ASSEMBLY BRUSH END 3.25	53	2261821	HINGE DOOR-PAINTED F/W	104	2992100	FT PEDAL BASE/PIN ASSEMBLY
8	2-400-127	PLAIN END HOUSING ASSEMBLY	54	2262640	PIN-HINGE DOOR	105	2262301	PULLEY (FOOT PEDAL)
9	144-049	BEARING - FLANGE [SERVICE ONLY]	55	2260183	KNOB-HINGE COVER A/T FW	106	2266400	COVER-PULLEY (STAMPING)
10	880-003	SEAL	56	2251600	ROPE- 31"	107	2223430	SCREW- 8-3/4 PPH TYPE 25 [2. EA]
11	880-006	SEAL WITH SHIELD	57	2267200	LATCH LEVER	108	2254031	SWITCH-MOM/OFF/COM
12	188-052	BRUSH ASSEMBLY [2. EA]	58	2263800	STRAP-HOLD DOWN	109	2266412	SWITCH PLATE, FT PEDAL
13	725-033	BRUSH RETENTION- PAPER TUBE	59	2261910	BRACKET HOLD DOWN STRAP	110	2332103	SCREW-6-20 X 3/8 THD [2. EA]
14	144-050	BEARING - SPHERICAL	60	2260500	PIN-ROLL LATCH LEVER [2. EA]	113	2261208	WIRE HARNESS, A/T FT. PED
15	738-030	BRUSH PLATE W/HOLDER 3.25	61	2263440	SCREW-10-24 X 3/4	114	2267500	CABLE ASSEMBLY-RIGHT 5'
16	784-036	BEARING RETAINER	62	2333101	NUT-HEX 3HP-SS NYLOC	115	2267510	CABLE ASSEMBLY-LEFT 5'
17	991-025	WASHER - FELT	■	2772015	TUBE W/BEARING RACE ASSEMBLY	116	2265430	CABLE JACKET 5'
18	975-032	SPRING - COMPRESSION	63	2272066	TUBE OUTER-18" 4 HOLES	117	2265110	BOOT-CONTROL BOX
19	303-039	THRUST DISC - METAL	64	2266260	BEARING RACE	118	2265115	BOOT-FOOT PEDAL BASE
20	701-007	O-RING [2. EA]	65	2266220	BEARING RACE-STEEL	119	2372100	SCREW-8-18 X 5/8 THD [2. EA]
21	701-041	O-RING	66	2266000	BEARING BALL-STEEL [2. EA]	120	2261714	WASHER-MAXXUM FT PDL [2. EA]
22	701-039	O-RING MK406460	67	2266115	BEARING CONE	121	2261900	BRACKET-CONDUIT
23	830-001	SCREW - SELF-THREAD 8-32 X 1.7 [2.EA]	68	2261619	COLLAR HALF-ZINC- [2. EA]	122	2301310	SCREW-8-18 X 1/2 [2. EA]
24	830-078	THRU BOLT 8-32 X 8.96 [2. EA]	69	2263452	SCREW-1/4-20X3/4 SS SHCS [2. EA]	123	2263210	BRACKET- CONDUIT ADJUSTMENT
25	2069041	MOTOR ASSEMBLY 12V 3.25 5SPD	70	2260264	COVER-CTR BOX A/T	124	2262720	SPRING-CONDUIT ADJUSTMENT
26	2032062	TUBE- COMPOSITE W/CSK HOLE 36"	71	2372100	SCREW-8-18 X 5/8 THD [4. EA]	125	2263463	SCREW-1/4-20 X 2 STL PPH
■	1378126	PROP KIT INCL. 27, 28, 29, 30	72	2265625	DECAL-COVER (36AT)	126	2261225	LEADWIRE-BATTERY
27	2061125	PROPELLER- WEEDLESS WEDGE	73	2260150	POINTER DISC TRNSLCNT RED	127	2020700	TERMINAL RING, 3/8" [2. EA]
28	2151726	WASHER- 5/16 STD SS	74	2265800	DECAL-INDICATOR	128	2256300	TIE WRAP-5.5" BLACK
29	2053101	NUT- PROP NYLOC	75	2053414	SCREW-8-32 X 1/2 TRI LOBE [3. EA]	129	2263201	CLAMP WIRE HARNESS MICRO
30	2092600	PIN-DRIVE SS	76	2267800	GEAR-INDICATOR	130	2332103	SCREW-6-20 X 3/8 THD
■	2771970	STD-BOWMOUNT FW 30, 33, 36AT	77	2301310	SCREW-8-18 X 1/2 SS	131	2260301	CONNECTING WIRE- SWITCH
32	2264221	ARM-UPPER, STD, FW	78	2375400	SHRINK TUBE-1/4OD X 1-3/4 [2. EA]	132	2260312	WIRE,BLK W/WHT- 19 1/2
33	2265120	BUMPER UPPER ARM	79	2355410	SHRINK TUBE-3/8 OD X 2 [2. EA]	133	2260322	WIRE,BLK W/BLUE -12"
■	2774310	ARM-LOWER FW ASSEMBLY [INCL.34, 45, 46, 47, 48, 49, 40, 56]	80	2232360	PULLEY-CABLE DRUM	134	2266414	BOTTOM PLATE MAX FOOT PEDAL
34	2254342	ARM-LWR FW MCHD	81	2261730	WASHER-NYLON A/T	135	9953104	SCREW-8 X 1/2" SS [8. EA]
35	2263900	MOTOR REST	82	2776203	BEARING RACE/ PINION ASSEMBLY	136	2265606	DECAL-ALL TERRAIN FT PDL
36	2251922	BOW PLATE-D C MCHD	84	2263410	SCREW-8-32 X 5/16 ZN PL [2. EA]	137	2262535	CONTROL BOX-PLASTIC A/T
37	2293801	TUBE LOCK- "D"	85	2790002	FOOT PEDAL/PLUG ASSEMBLY	139	2267800	GEAR-INDICATOR [2. EA]
*38	2264705	INSERT-HINGE BASE STD MT	86	2263700	PUSH-BUTTON FOOT PEDAL	140	2262220	INDICATOR-DRIVE
39	2260506	HINGE-PIN HEADLESS ZINC [2. EA]	87	2302732	SPRING-LOWER PEDAL SS	141	2261905	BRACKET/INDICATOR
40	2150400	PULL-GRIP	88	2264020	SWITCH MOMENTARY	142	2301310	SCREW-8-18 X 1/2 SS
41	2236000	BEARING NYLINER- [2. EA]	89	2265140	BOOT-MICROSWITCH	■	2994803	BAG ASSEMBLY-(INCL.143, 144, 145, 146
42	2303431	SCREW 1/4-20 X 5/8" PPH [4. EA]	90	2262114	SCREW-MOUNTING/SWITCH [2. EA]	*143	2153501	BOLT-MOUNTING- W / STGD [4. EA]
43	2293511	BOLT-UPPER ARM W/LOCTITE [4. EA]	91	2233100	NUT-SWITCH MOUNT [2. EA]	*144	2151726	WASHER-5/16 STD [4. EA]
44	2293500	BUSHING-SHOULDER (UPPER ARM) [2. EA]	92	2264026	SWITCH- 5 SPEED	*145	2153100	NUT-5/16-18 MOUNTING [4. EA]
45	2152610	SPRING-PIN (LOCKEAR)	93	2261701	LOCKWASHER-STAR	*146	2301720	WASHER.MOUNTING RUBBER [6. EA]
46	2233600	LOCK BAR- BOW MOUNT	94	2263105	NUT-HEX			
			95	2261715	SPACER-SWITCH 5 SP MODELS			

* THIS ITEM IS PART OF AN ASSEMBLY. THIS ITEM CANNOT BE SOLD SEPARATELY DUE TO MACHINING AND /OR ASSEMBLY THAT IS REQUIRED

All Terrain Bowmount Series Wiring Diagrams

30AT, 36AT, 40AT, & 55AT
12-volt (foot-control)

