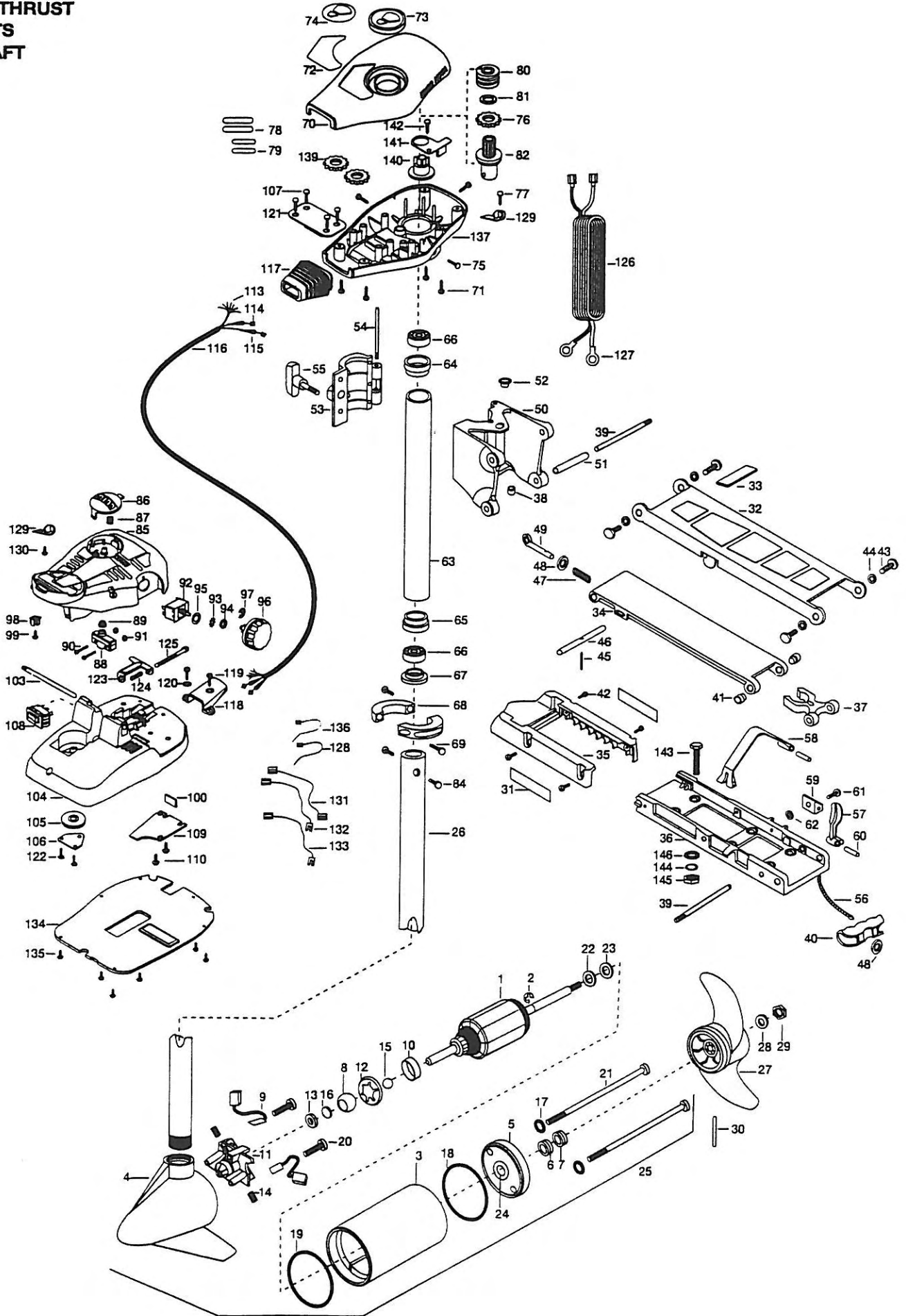


30AT
30 LBS THRUST
12 VOLTS
42" SHAFT



1	2-100-077	ARMATURE ASSEMBLY 12V 3.25 5SPDC TXT	46	2233600	LOCK BAR- (BOW MOUNT)	95	2261715	SPACER-SWITCH 5 SP MODELS
2	788-015	RETAINING RING	47	2152700	SPRING-(LOCKBAR) CAD.PLTI	96	2260170	KNOB-SPEED CONTROL(5 SPD)
3	431-177	HOUSING ASSEMBLY CENTER 3.25 TXT	48	2151700	WASHER-EYE SHAFT(.562 OD) [2. EA]	97	2263000	E-RING TRU-ARC
4	2-300-132	BRUSH END HOUSING ASSEMBLY	49	2153600	EYE SHART-CAD.PLATE	98	2260730	CONNECTOR 1/4 MALE TAB
5	2-400-127	PLAIN END HOUSING ASSEMBLY	50	2261811	HINGE BASE-(F/W)	99	2332103	SCREW-8-20 X 3/8
6	880-003	SEAL	51	2231570	SLEEVE ROLLER (HINGE BRACKET)	100	2266413	TENSION SCREW PLATE FT PEDL
7	880-008	SEAL W/SHIELD	52	2232350	EYELET-ROPE	103	2260511	PIN-PIVOT A/T FT PDL
8	144-050	BEARING- SPHERICAL	53	2261821	HINGE DOOR-PAINTED F/W	104	2992102	FT PEDAL BASE/PIN ASSEMBLY
9	188-052	BRUSH ASSEMBLY [2.EA]	54	2262640	PIN-HINGE DOOR	105	2262301	PULLEY (FOOT PEDAL)
10	725-033	PAPER TUBE- BRUSH RETENTION	55	2260183	KNOB-HINGE COVER A/T	108	2266400	COVER-PULLEY (STAMPING)
11	738-030	BRUSH PLATE W/HOLDER 3.25	56	2251600	ROPE- (31")	107	2223430	SCREW #8 X 3/4 PPH TYPE 25 SS [4. EA]
12	784-036	BEARING RETAINER	57	2267200	LATCH LEVER-(565T)	108	2254031	SWITCH-MOM/OFF/COM
13	991-025	WASHER FELT	58	2263800	STRAP-HOLD DOWN (565T)	109	2266412	SWITCH PLATE, FT PEDAL
14	975-032	SPRING- COMPRESSION [2.EA]	59	2261910	BRACKET HOLD DOWN STRAP	110	2332103	SCREW-8-20 X 3/8 THD [2. EA]
15	116-020	BALL- STEEL	60	2260500	PIN-ROLL LATCH LEVER [2. EA]	113	2261208	WIRE HARNESS, A/T FT. PED
16	303-039	THRUST DISK	61	2263440	SCREW-10-24 X 3 4	114	2267500	CABLE ASSEMBLY-RIGHT (5')
17	701-007	O-RING- THRU BOLT [2.EA]	62	2333101	NUT-HEX 3HP-SS NYLOC	115	2267510	CABLE ASSEMBLY-LEFT (5')
18	701-039	O-RING MK406460	63	2772015	TUBE W/BEARING RACE ASSEMBLY	116	2265430	CABLE JACKET (5')
19	701-041	O-RING-	64	2272066	TUBE OUTER-18" 4 HOLES	117	2265110	BOOT-CONTROL BOX
20	830-001	SCREW- SELF THREAD 8-32 X 1.7 [2.EA]	65	2268260	BEARING RACE-(565T)	118	2265115	BOOT-FOOT PEDAL BASE
21	830-076	THRU BOLT 8-32 X 8.0 [2.EA]	66	2266220	BEARING RACE-STEEL	119	2372100	SCREW-8-18 X 5/8 THD [2. EA]
22	990-067	THRUST WASHER- STEEL	67	2266115	BEARING BALL-STEEL [2. EA]	120	2261714	WASHER-MAXXUM FT PDL [2. EA]
23	990-070	THRUST WASHER- NYLATRON [2.EA]	68	2261619	BEARING CONE	121	2261901	BRACKET-CONDUIT AT/MAX
24	144-049	FLANGE BEARING (SERVICE ONLY)	69	2263452	COLLAR HALF-ZINC- [2. EA]	122	2301310	SCREW-8-18 X 1/2 [2. EA]
25	2069061	MOTOR ASSEMBLY 12V 3.25 5SPC	70	2263210	SCREW- 1/4-20X3/4 [2. EA]	123	2263210	BRACKET- CONDUIT ADJUSTMENT
26	2032063	TUBE (COMP)W/CSK HOLE 42"	71	2260284	COVER-CTR BOX AT/FC BLK	124	2262720	SPRING-CONDUIT ADJUSTMENT
■	1378126	PROP KIT	72	2372100	SCREW-8-18 X 5/8 THD [4. EA]	125	2283463	SCREW-1/4-20 X 2 STL PPH
*27	2061125	PROPELLER WEEDLESS WEDGE	73	2265627	DECAL-COVER (30AT)	126	2261225	LEADWIRE-BATTERY
*28	2151726	WASHER- 5/16 STD SS	74	2260150	POINTER DISC TRNSLCNT RED	127	2020700	TERMINAL RING, 3/8" [2. EA]
*29	2053101	NUT-PROP NYLOC	75	2265800	DECAL-INDICATOR	128	2256300	TIE WRAP-5.5" BLACK
*30	2092600	PIN-DRIVE (95-4HP'S) (SS)	76	2053414	SCREW-8-32 X 1/2 TRI-LOBE [3. EA]	129	2263201	CLAMP WIRE HARNESS MICRO [2.EA]
31	2265631	DECAL- MOTOR REST [2.EA]	77	2267800	GEAR-INDICATOR	130	2332103	SCREW-8-20 X 3/8 THD
■	2771970	STD-BOWMT FW 30,33,36AT	78	2301310	SCREW-8-18 X 1/2 (SS)	131	2260301	CONNECTING WIRE (SWITCH)
32	2264221	ARM- UPPER,STD,FW	79	2375400	SHRINK TUBE-1/4OD X 1-3/4 [2. EA]	132	2260312	WIRE,BLK W/WHT- 19 1/2
33	2265120	BUMPER (UPPER ARM)	80	2355410	SHRINK TUBE-3/8 OD X 2 [2. EA]	133	2260322	WIRE,BLK W/BLUE -12"
■	2774310	ARM-LOWER FW ASSEMBLY	81	2232360	PULLEY-CABLE DRUM	134	2266414	BOTTOM PLATE MAX FOOT PEDAL
		[INCL. 34, 45, 46, 47, 48, 49, 40, 56]	82	2261730	WASHER-NYLON A/T	135	9953104	SCREW-8 X 1/2" (S/S) [8. EA]
34	2254352	ARM-LWR FW	83	2776203	TOP BEARING RACE/ PINION	136	2256301	TIE WRAP 5.5 WHITE
35	2263900	MOTOR REST- A/T	84	2263410	SCREW-8-32 X 5/16 (ZN PL) [2. EA]	137	2262535	CONTROL BOX-PLASTIC A/T'S
36	2251922	BOW PLATE-D C (MCHD)	85	2790002	FOOT PEDAL/PLUG ASSEMBLY(AT)	138	2256301	TIE WRAP- 5.5 WHITE
37	2293801	TUBE LOCK-"D"	86	2263700	PUSH-BUTTON FOOT PEDAL	139	2267800	GEAR-INDICATOR [2. EA]
*38	2264705	INSERT-HINGE BASE(STD MT)	87	2302732	SPRING-LOWER PEDAL S/S	140	2262220	INDICATOR-DRIVE
39	2260506	HINGE-PIN (HEADLESS) ZINC [2. EA]	88	2264020	SWITCH MOMENTARY	141	2261905	BRACKET/INDICATOR
40	2150400	PULL-GRIP	89	2265140	BOOT-MICROSWITCH	142	2301310	SCREW-8-18 X 1/2 (S/S)
41	2236000	BEARING NYLINER- [2. EA]	90	2262114	SCREW-MOUNTING/SWITCH [2. EA]	■	2994837	BAG ASSEMBLY-(INCL.143,144,145,148
42	2303431	SCREW 1/4-20 X 5/8"PPH [4. EA]	91	2233100	NUT-SWITCH MOUNT [2. EA]	*143	2263462	SCREW 1/4-20X2 SS [4.EA]
43	2293511	BOLT-UPPER ARM W/LOCTITE [4. EA]	92	2264026	SWITCH-S SPEED	*144	2261713	WASHER-1/4 FLAT 18-18 [4.EA]
44	2293500	BUSHING-SHOULDER (UPPER ARM) [2. EA]	93	2261701	LOCKWASHER-STAR	*145	2263103	NUT- 1/4-20 NYLOC-JAM [4.EA]
45	2152610	SPRING-PIN (LOCKBAR)	94	2263105	NUT-HEX	*146	2301720	WASHER.MOUNTING RUBBER [6. EA]

* THIS ITEM IS PART OF AN ASSEMBLY. THIS ITEM CANNOT BE SOLD SEPARATELY DUE TO MACHINING AND /OR ASSEMBLY THAT IS REQUIRED.

All Terrain Bowmount Series Wiring Diagrams

30AT, 36AT, 40AT, & 55AT
12-volt (foot-control)

