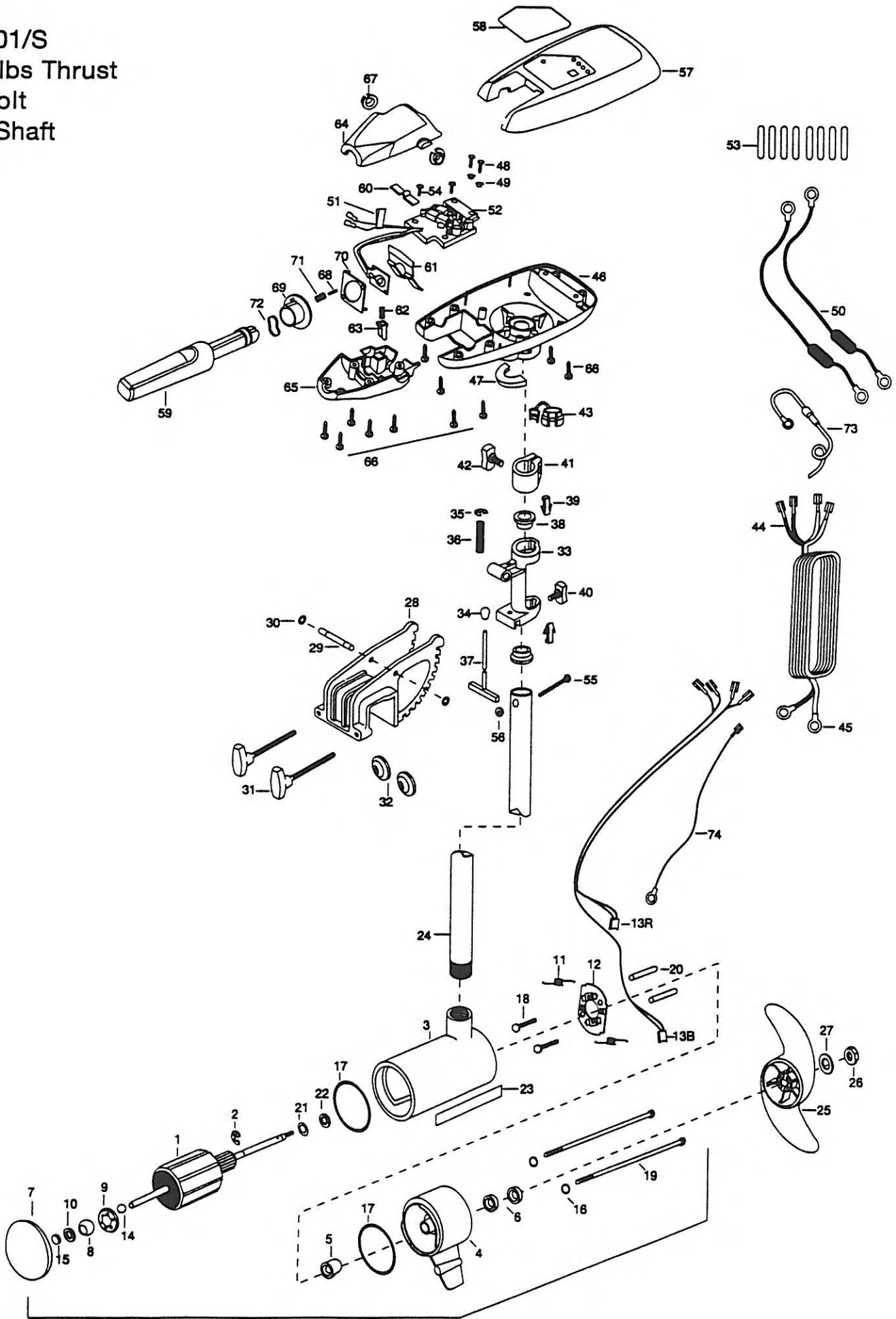


RT101/S
101 lbs Thrust
36 Volt
42" Shaft



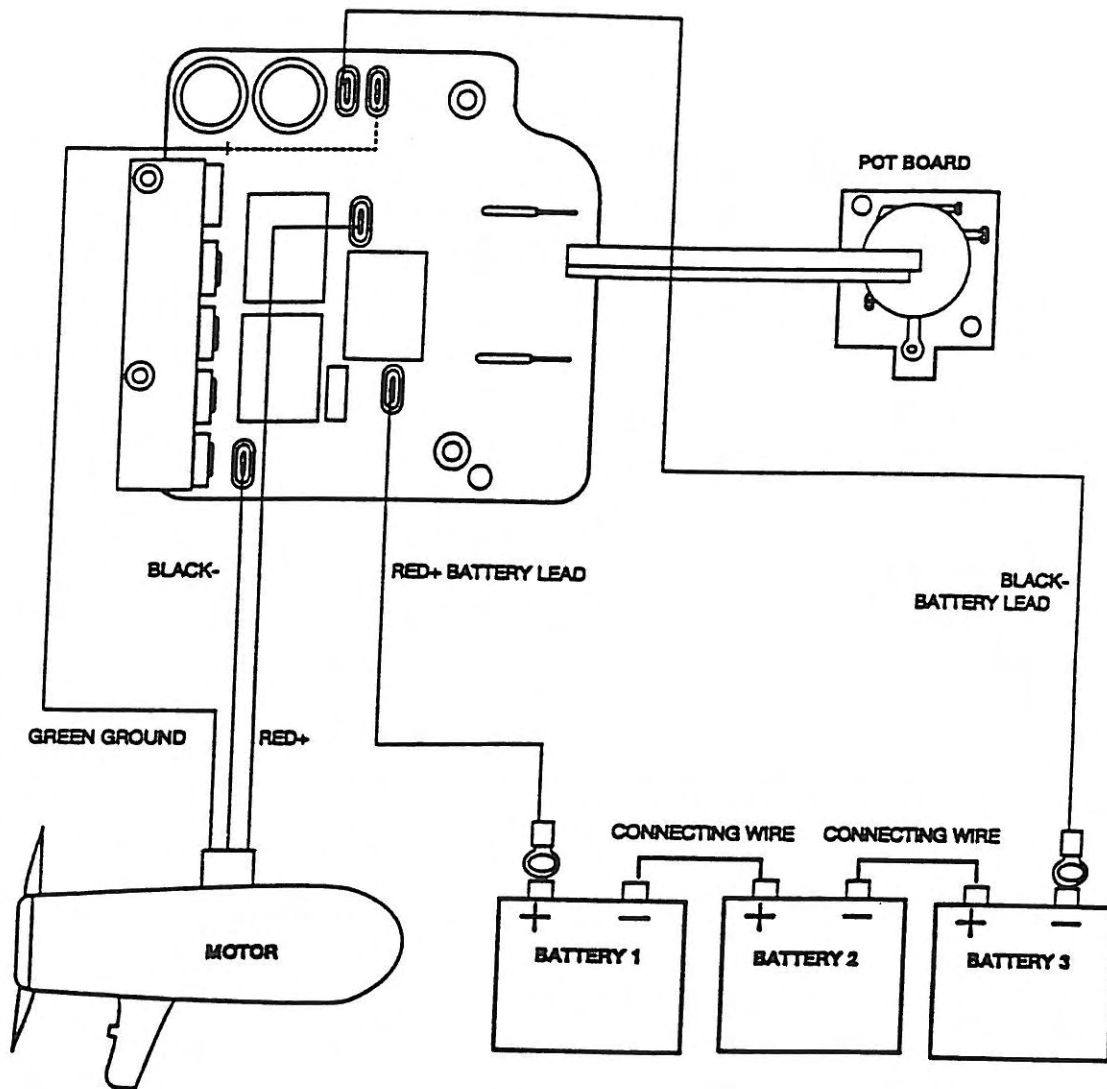
1	2-100-110	ARMATURE ASSEMBLY 36V VARS SW 57.5	25	2331130	PROPELLER (W.WDG) MAX101	50	2998200	CIRCUIT BRKR ASSEMBLY,36V- [2.EA]
2	788-040	RETAINING RING	26	2093101	NUT-PROP ,NYLOC LARGE MAX	51	2305810	TAG-AIR SWITCH LEADS
3	431-111	HOUSING ASSEMBLY- CENTER 4.0 TXT	27	2091701	WASHER- PROP LARGE MAX	52	2264013	CTRL BOARD ASSEMBLY-RT 101
4	2-300-013	BRUSH END HOUSING ASSEMBLY	■	2771961	BRACKET & HINGE ASSEMBLY (SW)	53	2305400	SHRINK TUBE-3/8 OD X 1-1/ [8.EA]
5	144-017	BEARING -FLANGE (SERVICE ONLY)	28	2771932	BRACKET DIE CAST SW E-COAT	54	2372100	SCREW-8-18 X 5/8 THD* SS [2.EA]
6	880-025	SEAL [2.EA]	29	2330500	PIN-HINGE (BRACKET) SS	55	2263406	SCREW-10-24 X 2 (SS) PPH
7	2-400-112	PLAIN END HOUSING ASSEMBLY	30	2333100	NUT-SPEED SS [2.EA]	56	2333101	NUT-HEX 10-24 UNC-2B NYLOCK
8	144-021	BEARING -SPHERICAL	31	2011376	SCREW-CLAMP/NEW KNOB SS [2.EA]	57	2300227	CONTROL BOX COVER (SW)
9	784-025	BEARING RETAINER	32	2331700	WASHER-CLAMP SCREW 1.5 [2.EA]	58	2095667	DECAL-COVER RT101/S
10	991-040	WASHER FELT	33	2031854	HINGE-MACH SS	59	2990915	HANDLE ASSEMBLY W/O U-JOINT
11	975-041	SPRING -TORSION [2.EA]	34	2010100	KNOB-TILT	60	2302742	SPRING-DETENT (OFF) SS
12	738-004	BRUSH PLATE -4" TERMINAL	35	2333001	E-RING- SS	61	2302743	SPRING-DETENT HANDLE-TILT
13R	409071	BRUSH / RED WIRE	36	2332700	SPRING- (T-BAR) SS	62	2302745	SPRING-RELEASE BUTTON SS
13B	409072	BRUSH / BLACK WIRE	37	2033601	T-BAR (E-COAT)	63	2303720	RELEASE BUTTON-HANDLE
14	116-025	BALL -STEEL	38	2037300	BUSHING-HINGE [2.EA]	64	2060411	HANDLE (TOP HALF) MAXIMIZE
15	303-043	THRUST DISC- METAL	39	2062800	TENSION BLOCK- "SNAP IN" [2.EA]	65	2060415	HANDLE (LOWER HALF)
16	701-009	O-RING -THRU BOLT [2.EA]	40	2011386	SCREW-TENSION/NEW KNOB SS	66	2303412	SCREW-6-20 X 5/8 SELF TAP [11.EA]
17	701-043	O-RING [2.EA]	41	2061520	COLLAR-DEPTH	67	2060005	BEARING-HANDLE PIVOT [2.EA]
18	830-027	SCREW -SELF THREADED 10-32 X 2"[2.EA]	42	2011366	SCREW-COLLAR/NW KNOB SS	68	2302600	PIN-ACTUATOR
19	830-096	THRU BOLT 12-24 X 11.56" SS [2.EA]	43	2052900	STRAIN RELIEF-C.CORD/SP.C	69	2302850	ACTUATOR-CAM
20	973-025	SPACER -BRUSH PLATE [2.EA]	44	2090600	LEADWIRE (10 GA) RINGS	70	2302851	ACTUATOR-FWD/REV
21	990-051	WASHER-THRUST, STEEL	45	2020700	TERMINAL RING, 3/8" [2.EA]	71	2302740	SPRING- (ACTUATOR)
22	990-052	WASHER- NYLATRON	46	2062587	CONTROL BOX,SW, .725 BORE	72	2302741	SPRING-CAM (ZNC PLTD STEEL)
23	2006603	DECAL- LOWER UNIT WHITE	47	2061513	COLLAR-CTRL BOX (SLT-WTR)	73	2060310	CONNECT'GROUND WIRE-FUSED
■	2317052	MOTOR ASSEMBLY 36V VARS SW 57	48	2301310	SCREW-8-18 X 1/2 SS [2.EA]	74	630-064	GROUND WIRE- GREEN
24	2032053	TUBE (COMPOSITE) 42"	49	2301710	WASHER-INSUL. (TRANSF.BAR) [2.EA]			

RT101/S

* This item is part of an assembly. This item cannot be sold separately due to machining and /or assembly that is required.

RipTide Transom Series Wiring Diagrams

RT101/S
36-volt



Note:

If you experience depth finder interference, attach the green motor ground wire to the control board ground as shown.

Do NOT use the crank battery as one of the three supply batteries. Using the crank battery as one of the supply batteries will cause corrosion damage to the trolling motor, and VOID the Warranty!