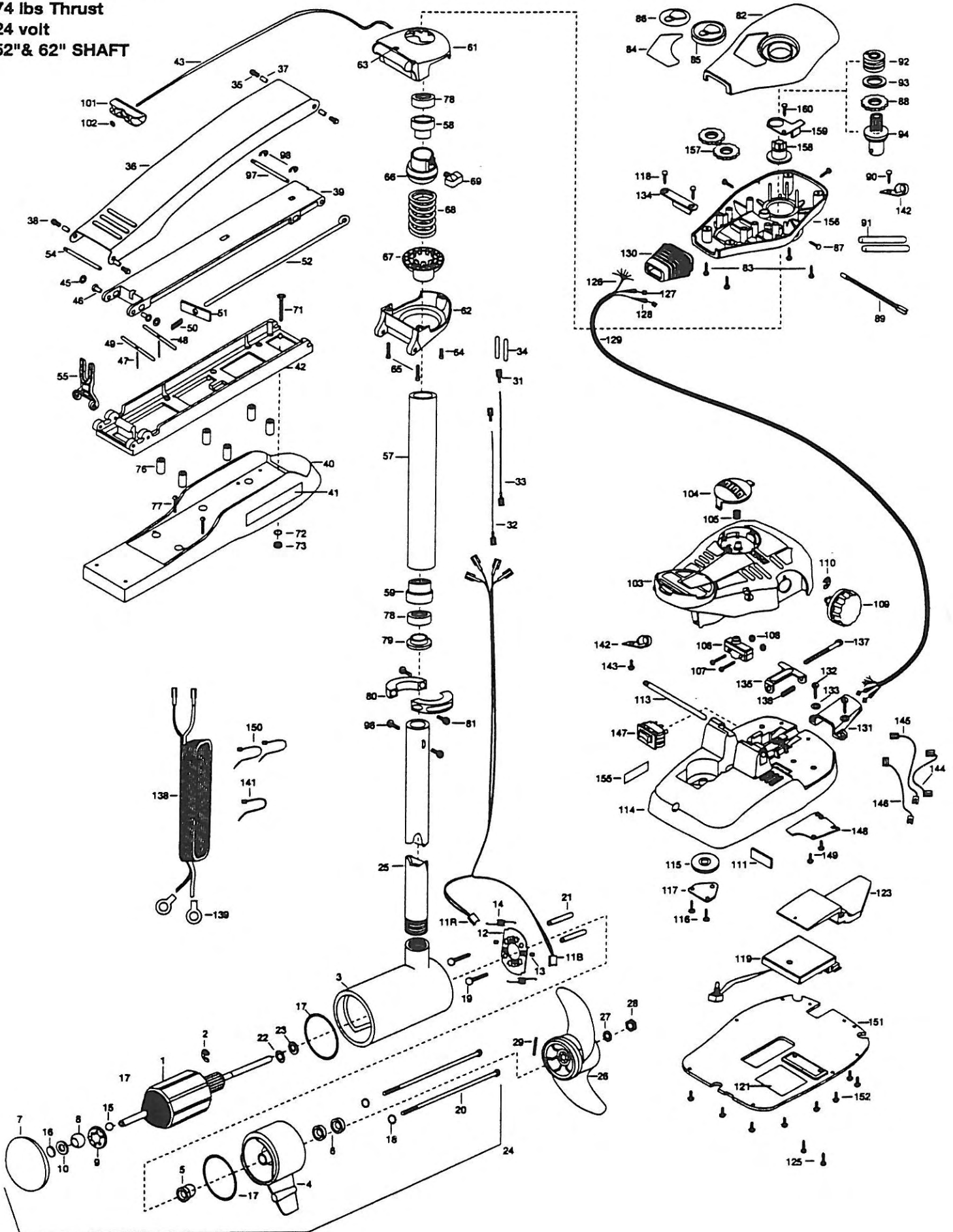


# MAXXUM 74/FC

74 lbs Thrust

24 volt

52" & 62" SHAFT



1	2-100-103	ARMATURE ASSEMBLY 24V 4*	50	2152700	SPRING-LOCKBAR CAD.PLT	103	2790002	FOOT PEDAL/PLUG ASSEMBLY
2	788-040	RETAINING RING	51	2262703	SPRING STOP	104	2263700	PUSH-BUTTON FOOT PEDAL
3	431-160	HOUSING ASSEMBLY CENTER 4.0 TXT	52	2153804	EYE SHAFT-2LOCKBAR LG-PLTD	105	2302732	SPRING-LOWER PEDAL SS
4	2-300-160	BRUSH END HOUSING ASSEMBLY	54	2260506	HINGE-PIN HEADLESS ZINC	106	2284023	SWITCH-SEALED ASSEMBLY
5	144-017	BEARING- FLANGE (SERVICE ONLY)	55	2293811	YOKE, MAX MNT-POLYPROPYLENE	107	2262114	SCREW-MOUNTING/SWITCH [2.EA]
6	880-025	SEAL [2.EA]	■	2772014	TUBE W/BEARING RACE ASSEMBLY 34*	108	2233100	NUT-SWITCH MOUNT [2.EA]
7	2-400-160	PLAIN END HOUSING ASSEMBLY	57	2272016	TUBE W/BEARING RACE ASSEMBLY 24*	109	2260160	KNOB-SPEED CONTROL VAR
8	144-021	BEARING SPHERICAL		2272067	TUBE OUTER 3.4" 62	110	2263000	E-RING TRU-ARC #5133-43
9	784-025	BEARING RETAINER		2272067	TUBE OUTER 2.4" 52	*111	2266413	PLATE -TENSION SCREW FTPED.
10	991-040	WASHER- FELT	58	2266260	BEARING RACE-(565T)	113	2260511	PIN-PIVOT A/T PT PDL
11R	409073	BRUSH ASSEMBLY-RED	59	2266220	BEARING RACE-STEEL	114	2774550	FT PEDAL BASE/PIN ASSEMBLY
11B	409074	BRUSH ASSEMBLY-BLK	■	2771988	BOWGUARD ASSEMBLY-FT CTRL, MAX 62	115	2262301	PULLEY- FOOT PEDAL
12	738-040	BRUSH PLATE		2771918	BOWGUARD ASSEMBLY-FT CTRL, MAX 52	116	2301310	SCREW-8-18 X 1/2 SS [2.EA]
13	830-028	SCREW- 10-32 X .164 [2.EA]	61	2771992	BRACKET BASE TOP/INSERT ASSEMBLY	117	2266400	COVER-PULLEY STAMPING
14	975-041	SPRING- TORSION [2.EA]	62	2771993	BRKT BOTTOM/BEARING FW ASSEMBLY 62	118	2301310	SCREW-8-18 X 1/2 SS [2.EA]
15	116-025	BALL- STEEL		2991999	BRKT BOTTOM/BEARING FW ASSEMBLY 52	119	2264008	CONTROL BOARD ASSEMBLY 24V MAX
16	303-043	THRUST DISC	63	2232351	EYELET-ROPE	121	2365107	INSULATING PAD 2.3 X 3.2
17	701-043	O-RING [2.EA]	64	2263402	SCREW 1/4-20 X 3/4 ZINC	123	2264018	HEAT SINK, MACH, MAX PT
18	701-009	O-RING -THRU BOLT [2.EA]	65	2263404	SCREW-1/4-20 X 2-1/4 SHCP [2.EA]	125	2263447	SCREW, 8-32 X 1 [2.EA]
19	830-027	SCREW -SELF THREAD 10-32 X 2 [2.EA]	66	2261525	SPRING-SLEEVE UPPER	126	2261219	WIRE HARNESS AT & MAX 82.5
20	830-094	THRU BOLT 12-24 X 10.31 [2.EA]	67	2261535	SPRING SLEEVE, LOWER	127	2267500	CABLE ASSEMBLY-RIGHT 5'
21	973-025	SPACER- BRUSH PLATE [2.EA]	68	2262708	SPRING, BOWGUARD, NIK PL	128	2267510	CABLE ASSEMBLY-LEFT 5'
22	990-051	WASHER- STEEL	69	2011365	SCREW-COLLAR/NEW KNOB	129	2265430	CABLE JACKET 5'
23	990-052	WASHER- NYLATRON	■	2994830	BAG ASSEMBLY-MAXXUM	130	2265110	BOOT-CONTROL BOX
24	2317033	MOTOR ASSEMBLY 24V 4* VARS TXT 57.5	71	2263431	SCREW 1/4-20 X 3.5 PPH [6.EA]	131	2265115	BOOT-BOOT PEDAL BASE
25	2032066	TUBE COMP W/CSK HOLE 82*	*72	2261713	WASHER-1/4 FLAT S/S [6.EA]	132	2372100	SCREW-8-18 X 5/8 THD SS [2.EA]
	2032067	TUBE COMP W/CSK HOLE 52*	*73	2263103	NUT-1/4-20 NYLOCK-JAM [6.EA]	133	2281714	WASHER-MAXXUM PT PDL [2.EA]
	■	1378129	■	2994832	BAG ASSEMBLY	134	2261900	BRACKET-CONDUIT
26	2331120	PROPELLER W.WEDGE HP&RT	78	2261505	SPACER, MOTOR REST [6.EA]	135	2263210	BRACKET-CONDUIT ADJUSTMENT
27	2091701	WASHER-PROP LARGE	77	2263434	SCREW, 8-18 X 1 PPH SS [2.EA]	138	2262720	SPRING-CONDUIT
28	2093101	NUT-PROP NYLOCK SS	78	2268000	BEARING BALL-STEEL	137	2263463	SCREW-1/4-20 X 2 STL PPH
29	2092600	PIN-DRIVE SS	79	2266115	BEARING CONE	138	2261227	LEADWIRE VARIABLE
31	2030710	CONNECTOR BUTT [2.EA]	80	2771617	COLLAR HALF-ZINC-2 PER- KIT	139	2020700	TERMINAL RING, 3/8 [2.EA]
32	2030317	WIRE EXTENSION-18 RED	81	2263452	SCREW-1/4-20 X 3/4 SHCS SS [2.EA]	141	2256300	TIE WRAP-5.5 BLACK
33	2030316	WIRE EXTENSION-18 BLACK	82	2260283	CONTROL BOX COVER-MAXXUM	142	2263201	CLAMP WIRE HARNESS MICRO [2.EA]
34	2375400	SHRINK TUBE 1/4OD X 1-3/4 [2.EA]	83	2372100	SCREW-8-18 X 5/8 THD [4.EA]	143	2332103	SCREW-6-20 X 3/8 THD SS
35	2263500	BOLT, SHOULDER MAXXUM [2.EA]	84	2265532	DECAL COVER, MAXXUM 74	144	2260316	CONNECTING WIRE VAR. SPD
	■	2991922	85	2260150	POINTER DISC TRNSLCNT RED	145	2260312	WIRE, BLK W/WHT STRP 19 1/2
		2991974	86	2265800	DECAL-INDICATOR	146	2260323	WIRE, BLK W/GRN STP VARIABLE
36	2264216	ARM UPPER-FW LONG	87	2053414	SCREW-#8-32 X 1/2 TRI-LOBE [3.EA]	147	2254031	SWITCH-MOM/OFF/CON
37	2293501	BUSHING, STAINLESS STEEL [4.EA]	88	2287800	GEAR-INDICATOR	148	2266412	SWITCH PLATE, PT PEDAL
38	2263500	BOLT, SHOULDER MAXXUM [2.EA]	89	2284015	LIGHT/INDICATOR	149	2332103	SCREW-6-20 X 3/8 THD SS [2.EA]
39	2774317	ARM-LOWER ASSEMBLY, LG, FW, EXT	90	2301310	SCREW-8-18 X 1/2 SS	150	2256301	TIE WRAP-5.5 WHITE [2.EA]
40	2263913	MOTOR REST LONG MAXXUM	91	2355410	SHRINK TUBE-3/8 OD X 2- [2.EA]	151	2266414	BOTTOM PLATE, MAXXUM PT
41	2265514	DECAL-MAXXUM, MOTOR REST [2.EA]	92	2232360	PULLEY-CABLE DRUM	152	9953104	SCREW-8 X 1/2 SS [8.EA]
42	2771978	BOWPLATE- FW LG MACH/INSERT	93	2261730	WASHER-NYLON	155	2266610	DECAL-ON/OFF SWITCH
43	2251601	ROPE 40" MAXXUM MOUNT	94	2776204	PINION/RACE ASSEMBLY	156	2262531	CONTROL BOX-PLASTIC
45	2281707	WASHER-3/8 X 1/2 X .016 [2.EA]	96	2283410	SCREW-8-32 X 5/16 ZN PL [2.EA]	157	2267800	GEAR-INDICATOR [2.EA]
46	2236000	BEARING NYLINER- [2.EA]	97	2260513	HINGE PIN- MAX, A/T PLATE	158	2262220	INDICATOR-DRIVE
47	2152610	SPRING-PIN LOCKBAR [2.EA]	98	2263010	E-RING 3/8 DIA. SHAFT [2.EA]	159	2261905	BRACKET/INDICATOR
48	2233600	LOCK BAR- BOW MOUNT	101	2150400	PULL-GRIP	160	2301310	SCREW-8-18 X 1/2 SS
49	2233602	LOCK BAR- REAR ZINC	102	2151700	WASHER-EYE SHAFT .562 OD			

\* This item is part of an assembly. This item cannot be sold separately due to machining and /or assembly that is required.

P/N 2264946 REV.B 8-00

Max 74 - 52" & 62"

# Max65 & Max74

