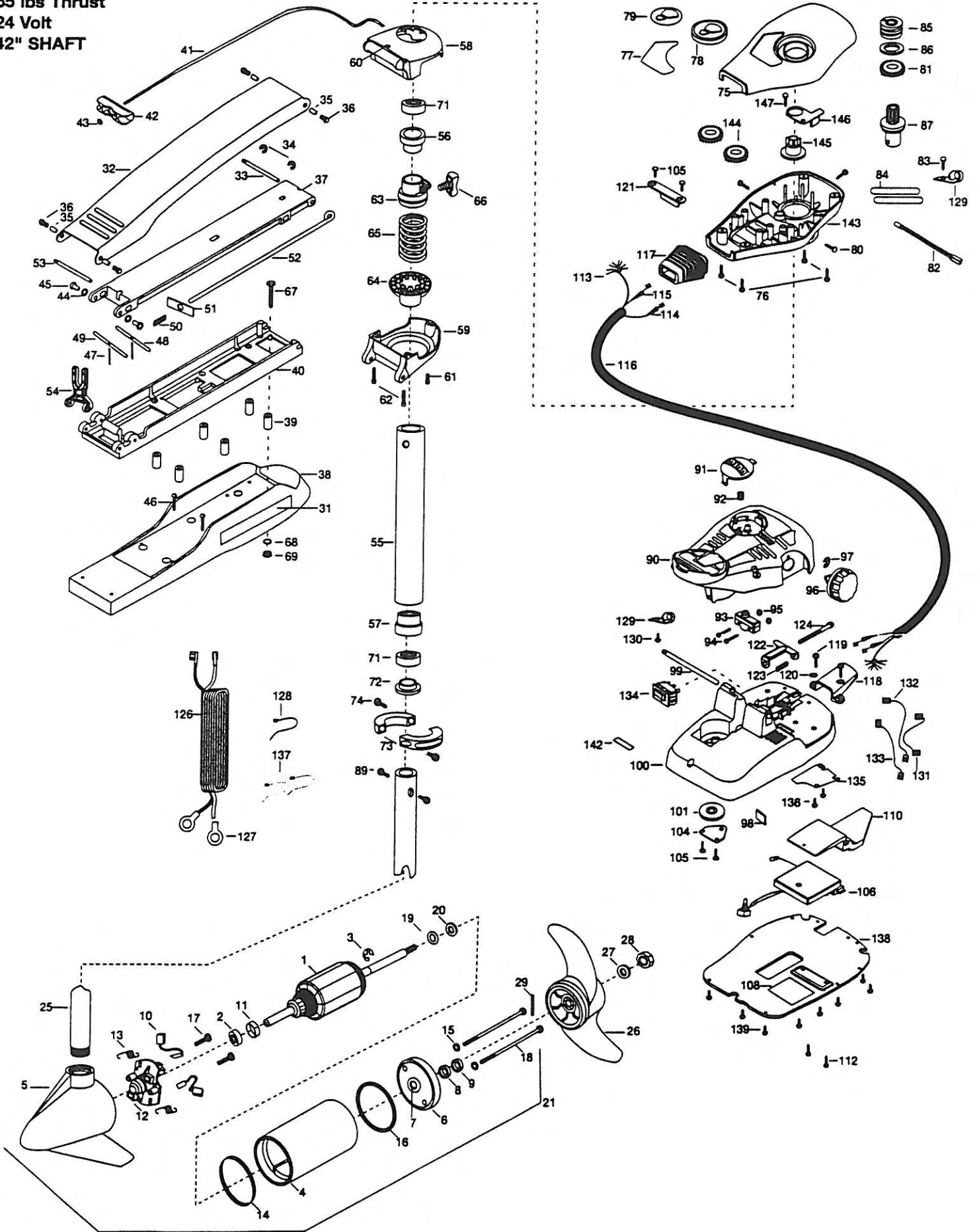


MAX65FC 42
65 lbs Thrust
24 Volt
42" SHAFT



1	2-100-009	ARMATURE ASSEMBLY	49	2233602	LOCK BAR, REAR - ZINC	95	2233100	NUT-SWITCH MOUNT [2.EA]
2	140-010	BALL BEARING	50	2152700	SPRING-(LOCKBAR) CAD.PLTD	96	2260160	KNOB-SPEED CONTROL (VAR)
3	788-015	RETAINING RING	51	2262703	SPRING STOP MAXXUM	97	2263000	E-RING THU-ARC
4	431-005	CENTER HOUSING ASSEMBLY	52	2153602	EYE SHAFT-2LOCKBAR STD	*98	2266413	TENSION SCREW PLATE FTPEDAL
5	421-065	HOUSING BRUSH END 3.62 TXT	53	2260506	HINGE-PIN (HEADLESS) ZINC	99	2260511	PIN-PIVOT A/T FT PDL
6	2-400-101	PLAIN END HOUSING ASSEMBLY	54	2293811	YOKE, MAXXUM MOUNT, POLYPROPYLENE	100	2774550	FT PEDAL BASE/PIN ASSEMBLY
7	144-049	BEARING - FLANGE (SERVICE CENTER ONLY)	■	2772012	TUBE W/BEARING RACE ASSEMBLY	101	2262301	PULLEY (FOOT PEDAL)
8	880-003	SEAL	*55	2272069	TUBE OUTER-21" 4 HOLES	104	2266400	COVER-PULLEY
9	880-006	SEAL WITH SHIELD	56	2266260	BEARING RACE	105	2301310	SCREW-8-18 X 1/2 [4.EA]
10	188-038	BRUSH ASSEMBLY [2.EA]	57	2266220	BEARING RACE-STEEL	106	2264008	CNTRL BOARD ASSEMBLY 24V MAX65/FC
11	725-050	BRUSH RETENTION- PAPER TUBE	■	2771918	BOWGUARD ASSEMBLY-FT CTRL STD	108	2365107	INSULATING PAD (2.3 X 3.2)
12	738-036	BRUSH PLATE W/HOLDER	58	2771992	BRACKET BASE TOP/INSERT ASSEMBLY	110	2264018	HEAT SINK, MACH, MAX FTL
13	975-040	SPRING - TORSION [2.EA]	59	2991999	BRKT BOTTOM/BEARING FW ASSEMBLY	112	2263447	SCREW, 8-32 X 1" [2.EA]
14	337-036	GASKET	60	2232351	EYELET-ROPE	113	2261219	WIRE HARNESS AT & MAX
15	701-008	O-RING, THRU-BOLT [2.EA]	61	2263402	SCREW 1/4-20 X 3/4" ZINC	114	2267500	CABLE ASSEMBLY-RIGHT (5')
16	701-081	O-RING	62	2263404	SCREW-1/4-20 X 2 1/4 SCHP SS [2.EA]	115	2267510	CABLE ASSEMBLY-LEFT (5')
17	830-007	SCREW-8-32 [2.EA]	63	2261525	SPRING-SLEEVE UPPER	118	2265430	CABLE JACKET (5')
18	830-008	THRU-BOLT 10-32 X 9.2 [2.EA]	64	2261535	SPRING SLEEVE, LOWER	117	2265110	BOOT-CONTROL BOX
19	990-087	WASHER- STEEL THRUST	65	2262706	SPRING, BOWGUARD, NIK PL	118	2265115	BOOT-FOOT PEDAL BASE
20	990-070	WASHER - NYLATRON	66	2011365	SCREW-COLLAR/NEW KNOB	119	2372100	SCREW-8-18 X 5/8 THD [2.EA]
21	2098030	MOTOR ASSEMBLY 24V F/W 51.5" LDS	■	2994830	BAG ASSEMBLY-MAXXUM	120	2261714	WASHER-MAXXUM FT PDL [2.EA]
25	2032061	TUBE (COMPOSITE) W/CSK HOLE 43-3/4	*67	2263431	SCREW 1/4-20 X 3.5 PPH [6.EA]	121	2261900	BRACKET-CONDUIT
■	1378122	PROPELLER - KIT	*68	2261713	WASHER-1/4 FLAT S/S [6.EA]	122	2263210	BRACKET-CONDUIT ADJUST
*26	2091150	PROPELLER W.WEDGE	*69	2263103	NUT-1/4-20 NYLOCK-JAM SS [6.EA]	123	2262720	SPRING-CONDUIT ADJUST
*27	2151726	WASHER-5/16 SS	71	2266000	BEARING BALL-STEEL [2.EA]	124	2263463	SCREW-1/4-20 X 2" STL PPH
*28	2053101	NUT-PROP NYLOC	72	2266115	BEARING CONE	126	2261227	LEADWIRE (A/T VARIABLE)
*29	2092600	PIN-DRIVE	73	2261619	COLLAR HALF-ZINC- [2.EA]	127	2020700	TERMINAL RING, 3/8" [2.EA]
31	2265514	DECAL-MAXXUM MOTOR REST [2.EA]	74	2263452	SCREW 1/4-20 X 3/4 [2.EA]	128	2256300	TIE WRAP-5.5' BLACK
■	2771875	MOUNT, BOW ASSEMBLY, STD FW	75	2260283	CONTROL BOX COVER-MAXXUM	129	2263201	CLAMP WIRE HARNESS MICRO [2.EA]
32	2264206	ARM-UPPER STD FW	76	2372100	SCREW-8-18 X 5/8 THD [4.EA]	130	2332103	SCREW-8-20 X 3/8 THD (SS)
33	2260513	HINGE PIN (MAX,A/T) PLATED	77	2265620	DECAL-COVER (MAX 65/FC)	131	2260316	CONNECTING WIRE (VAR.SPD)
34	2263010	E-RING 3/8 DIA. SHAFT [2.EA]	78	2260150	POINTER DISC TRNSLCNT RED	132	2260312	WIRE, BLK W/WHT STRP 19 -1/4"
35	2293501	BUSHING, STAINLESS STEEL [4.EA]	79	2265800	DECAL-INDICATOR	133	2260323	WIRE, BLK W/GRN STP VARIABLE
36	2263500	BOLT, SHOULDER (MAXXUM) [4.EA]	80	2053414	SCREW-8-32 X 1/2 TRI-LOBE [3. EA]	134	2254031	SWITCH-MOM/OFF/CON
37	2774315	ARM-LOWER ASSEMBLY, STD, FW, EXTRA [INCLUDES 41-43, 47-51]	81	2267800	GEAR-INDICATOR	135	2266412	SWITCH PLATE, FT PEDAL
38	2263912	MOTOR REST (STD) FW	82	2264015	LIGHT/INDICATOR	136	2332103	SCREW-6-20 X 3/8 THD*(SS) [2.EA]
39	2261505	SPACER, MOTOR REST [6.EA]	83	2301310	SCREW-8-18 X 1/2	137	2256301	TIE WRAP-5.5" WHITE [2.EA]
40	2251967	BOWPLATE, STD FW	84	2355410	SHRINK TUBE-3/8 OD X 2" [2.EA]	138	2774510	BOTTOM PLATE, MAXXUM FT
41	2251601	ROPE (40"), MAXXUM MOUNT	85	2232360	PULLEY-CABLE DRUM	139	9953104	SCREW-8 X 1/2" (SS) [8.EA]
42	2150400	PULL-GRIP	86	2261730	WASHER-NYLON A/T CON	142	2266610	DECAL-ON/OFF SWITCH
43	2151700	WASHER-EYE SHAFT (.562 OD)	87	2996246	TOP BEARING RACE /PINION DRIVE	143	2262531	CONTROL BOX-PLASTIC
44	2261707	WASHER-3/8 X 1/2 X .016 (S/S) [2.EA]	89	2263410	SCREW-8-32 X 5/16 [2.EA]	144	2267800	GEAR-INDICATOR [2.EA]
45	2236000	BEARING NYLINER [2.EA]	90	2790002	FOOT PEDAL/PLUG ASSEMBLY	145	2262220	INDICATOR-DRIVE
46	2263434	SCREW, 8-18 X 1" PPH [2.EA]	91	2263700	PUSH-BUTTON FOOT PEDAL	146	2261905	BRACKET/INDICATOR
47	2152610	SPRING-PIN (LOCKBAR) [2.EA]	92	2302732	SPRING-LOWER PEDAL	147	2301310	SCREW-8-18 X 1/2"
48	2233600	LOCK BAR- (BOW MOUNT)	93	2264023	SWITCH-SEALED ASSEMBLY			
			94	2262114	SCREW-MOUNTING/SWITCH [2.EA]			

Max 65 - 42"

* This Item is part of an assembly. This Item cannot be sold separately due to machining and /or assembly that is required.

Max65 & Max74

