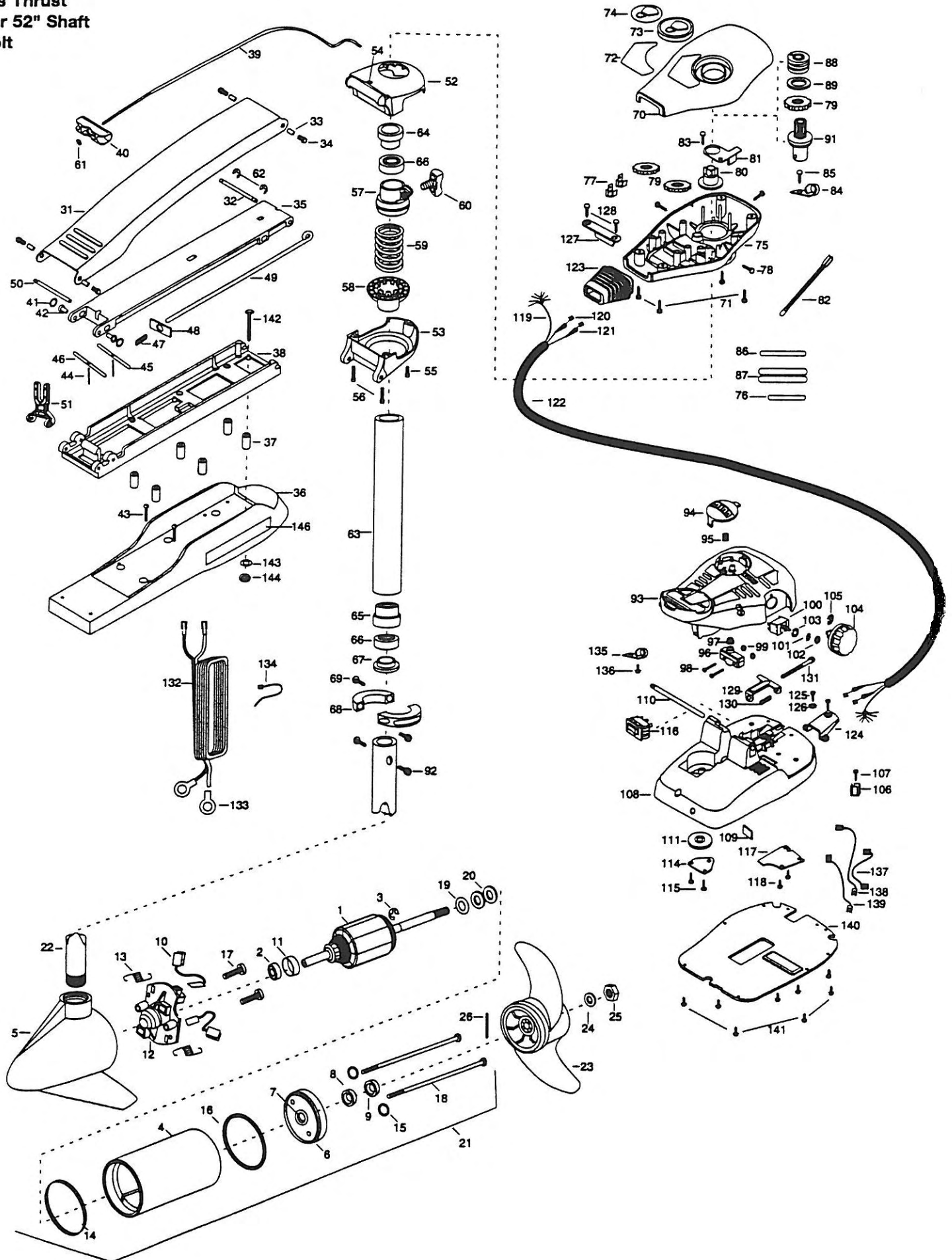


50/SCMAXXUM  
50 lbs Thrust  
42" or 52" Shaft  
12 Volt



1	2-100-098	ARMATURE ASSEMBLY 3.62	50	2260606	HINGE-PIN (HEADLESS) ZINC	101	2261701	LOCKWASHER-STAR
2	140-010	BEARING-BALL	51	2293811	YOKE, MAXXUM MOUNT POLYPROPYLENE	102	2263105	NUT- HEX
3	788-015	RETAINING RING	■	2771989	BOWGUARD ASSEMBLY FT CTRL MAX 42"	103	2261715	SPACER- SWITCH 5 SPEED
4	431-101	HOUSING CENTER ASSEMBLY 3 62 TXT		2771988	BOWGUARD ASSEMBLY FT CTRL XL MAX 52"	104	2260170	KNOB-SPEED CONTROL 5SPD
5	2-300-195	BRUSH END HOUSING ASSEMBLY 42"	*52	2771992	BRACKET BASE-TOP/INSERT	105	2263000	E-RING
6	2-300-196	BRUSH END HOUSING ASSEMBLY 52"	*53	2771999	BRACKET BASE BOTTOM/BEARING	106	2260730	CONNECTOR -MALE TAB
7	2-400-101	PLAIN END HOUSING ASSEMBLY	*54	2232351	EYELET-ROPE	107	2332103	SCREW 6-20 X 3/8 THD
8	144-049	BEARING-(FLANGE,SERVICE ONLY)	*55	2263402	SCREW 1/4-20 X 3/4	108	2772100	FOOT PEDAL BASE/PIN ASSEMBLY
9	880-003	SEAL	*56	2263404	SCREW 1/4-20 X 2-1/4 SHCP SS [2.EA]	*109	2266413	PLATE-TENSION SCREW
9	880-008	SEAL-WITH SHIELD	*57	2261525	SPRING-SLEEVE UPPER BOWGD	110	2260511	PIN-PIVOT
10	188-036	BRUSH ASSEMBLY [2.EA]	*58	2261535	SPRING, BOWGUARD, NIK PL	111	2262301	PULLEY (FOOT PEDAL)
11	725-050	BRUSH RETENTION- PAPER TUBE	*58	2261535	SPRING SLEEVE LWR	114	2266400	COVER-PULLEY
12	738-036	BRUSH PLATE WITH HOLDER	60	2011365	SPRING, BOWGUARD, NIK PL	115	2301310	SCREW-8-18 X 1/2 [2.EA]
13	975-040	SPRING-TORSION	61	2151700	SCREW-COLLAR/NEW KNOB	116	2254031	SWITCH-MOM/OFF/COM
14	337-038	GASKET	62	2263010	WASHER-EYE SHAFT .562 OD	117	2266412	SWITCH PLATE, FT PEDAL
15	701-008	O-RING THRU BOLT [2.EA]	■	2772012	E-RING 3/8 DIA SHAFT	118	2332103	SCREW-6-20 X 3/8 [2.EA]
16	701-081	O-RING	■	2772012	TUBE W/BEARING RACE ASSEMBLY (42" SHAFT)	119	2261208	WIRE HARNESS- A/T FT PDL
17	830-007	#8-32 SCREW [2.EA]	2772016	2772016	TUBE W/BEARING RACE ASSEMBLY (52" SHAFT)	120	2267500	CABLE ASSEMBLY-RIGHT (5')
18	830-042	THRU BOLT 10-32 X 8.83 [2.EA]	*63	2272069	TUBE OUTER 21" (42" SHAFT)	121	2267510	CABLE ASSEMBLY-LEFT (5')
19	990-067	WASHER-STEEL THRUST		2272067	TUBE OUTER 24" (52" SHAFT)	122	2265430	CABLE JACKET (5')
20	990-070	WASHER-NYLATRON [2.EA]	64	2266260	BEARING RACE	123	2265110	BOOT-CONTROL BOX
21	2099032	MOTOR ASSEMBLY 12V 3.82 F/W 5SPD 42"	65	2266220	BEARING RACE-STEEL	124	2265115	BOOT-FOOT PEDAL BASE
21	2099030	MOTOR ASSEMBLY 12V 3.82 F/W 5SPD 52"	66	2266000	BEARING BALL-STEEL [2.EA]	125	2372100	SCREW-8-18 X 5/8 [2.EA]
22	2032061	TUBE- COMPOSITE 42"	67	2266115	BEARING CONE	126	2261714	WASHER- MAXXUM FT PDL
22	2032067	TUBE- COMPOSITE 52"	68	2771819	COLLAR HALVES KIT	127	2261900	BRACKET-CONDUIT
23	2091150	PROPELLER WEEDLESS WEDGE TPROS	69	2263452	SCREW-1/4-20 X 3/5 SHCS SS [2.EA]	128	2031310	SCREW-8-18 X 1/2 [2.EA]
24	2151728	WASHER- 5/18 STD SS	70	2260283	CONTROL BOX COVER-MAXXUM	129	2263210	BRACKET-CONDUIT ADJUSTMENT
25	2053101	NUT-PROP NYLOC	71	2372100	SCREW-8-18 X 5/8 [4.EA]	130	2262720	SPRING-CONDUIT ADJUSTMENT
26	2092600	PIN-DRIVE	72	2265518	DECAL COVER, MAXXUM 50/SC	131	2263462	SCREW-1/4-20 X 2 PPH SS
■	2771975	MOUNT, BOW ASSEMBLY FW STD (42" SHAFT)	73	2260150	POINTER DISC TRNSLNT RED	132	2261224	LEADWIRE-BATTERY 42" SHAFT
■	2771974	MOUNT, BOW ASSEMBLY XL FW BG (52" SHAFT)	74	2265800	DECAL-INDICATOR	133	2020700	LEADWIRE-BATTERY 52" SHAFT
31	2264206	ARM UPPER-FW STD (42" SHAFT)	75	2262531	CONTROL BOX-PLASTIC	134	2256300	TERMINAL RING, 3/8" [2.EA]
■	2264216	ARM UPPER-FW LONG PT (52" SHAFT)	76	2375400	SHRINK TUBE 1/4 X 1-3/4	135	2263201	TIE WRAP-5.5" BLACK
32	2260513	HINGE PIN -MAX AT	77	2020713	TERMINAL ADAPTOR MAX50/SC [2.EA]	136	2332103	CLAMP WIRE HARNESS MICRO [2.EA]
33	2293501	BUSHING (4 REQ'D)	78	2053414	SCREW-8-32 X 1/2 TRI-LOBE [3.EA]	137	2260301	SCREW-6-20 X 3/8
34	2263500	BOLT, SHOULDER [4.EA]	79	2267800	GEAR-INDICATOR [3.EA]	138	2260312	CONNECTING WIRE (SWITCH)
35	2774315	ARM-LOWER ASSEMBLY STD (42" SHAFT)	80	2262220	INDICATOR-DRIVE	139	2260322	WIRE -BLK/BLU 12"
■	2774317	ARM-LOWER ASSEMBLY LG FW EXTR (52" SHAFT)	81	2261905	BRACKET/INDICATOR	140	2266414	BOTTOM PLATE MAX FT PDL
36	2263912	MOTOR REST ASSEMBLY (42" SHAFT)	82	2264015	LIGHT/INDICATOR	141	9953104	SCREW-8 X 1/2 [8.EA]
■	2263913	MOTOR REST ASSEMBLY LONG (52" SHAFT)	83	2301310	SCREW-8-18 X 1/2	■	2994830	BAG ASSEMBLY-MAXXUM FW
37	2261505	SPACER, MOTOR REST [8.EA]	84	2263201	CLAMP WIRE HARNESS	142	2263431	SCREW 1/4-20 X 3.5 [8.EA]
38	2251967	BOW PLATE ASSEMBLY (42" SHAFT)	85	2301310	SCREW-8-18 X 1/2	143	2261713	WASHER-1/4 FLAT [8.EA]
■	2251977	BOW PLATE ASSEMBLY LG/INSERT (52" SHAFT)	86	2355410	SHRINK TUBE-3/8 OD X 2"	144	2263103	NUT-1/4-20 [8.EA]
39	2251601	ROPE- 40"	87	2335400	SHRINK TUBE-1/2 OD X 2" [2.EA]	145	2301720	WASHER-MOUNTING, RUBBER [8.EA]
40	2150400	PULL-GRIP	88	2232360	PULLEY-CABLE DRUM			
41	2261707	WASHER 3/8 X 1/2 [2.EA]	89	2261730	WASHER-NYLON			
42	2236000	BEARING NYLINER [2.EA]	91	2776203	BEARING RACE/ PINION ASSEMBLY			
43	2263434	SCREW-8-18 X 1 [2.EA]	92	2263410	SCREW-8-32 X 5/16 [2.EA]			
44	2152610	SPRING-PIN (LOCKBAR) [2.EA]	93	2790002	FOOT PEDAL/PLUG ASSEMBLY			
45	2233600	LOCK BAR- BOW MOUNT	94	2263700	PUSH-BUTTON, FOOT PEDAL			
46	2233602	LOCK BAR- REAR	95	2302732	SPRING-LOWER PEDAL			
47	2152700	SPRING-(LOCKBAR)	96	2264020	SWITCH- MOMENTARY			
48	2262703	SPRING STOP	97	2265140	BOOT- MICROSWITCH			
49	2153602	EYE SHAFT -2LOCKBAR (42" SHAFT)	98	2262114	SCREW-MOUNTING/SWITCH [2.EA]			
■	2153604	EYE SHAFT -2LOCKBAR (52" SHAFT)	99	2233100	NUT-SWITCH MOUNT [2.EA]			
			100	2264026	SWITCH -5 SPEED			

---

NOT SHOWN- FOR 52" SHAFT ONLY	
2260330	WIRE EXTENSION 10 GA BLACK
2260331	WIRE EXTENSION 10 GA RED
2260332	WIRE EXTENSION 16 GA WHITE
2260333	WIRE EXTENSION 16 GA YELLOW
2355410	SHRINK TUBE 3/8 X 2 [2.EA]
2375400	SHRINK TUBE 1/4 X 1-3/4 [2.EA]

\* This item is part of an assembly. This item cannot be sold separately due to machining and /or assembly that is required.

Max 50/SC - 42" & 52"

# Maxxum Bowmount Series Wiring Diagrams

Max50/SC

