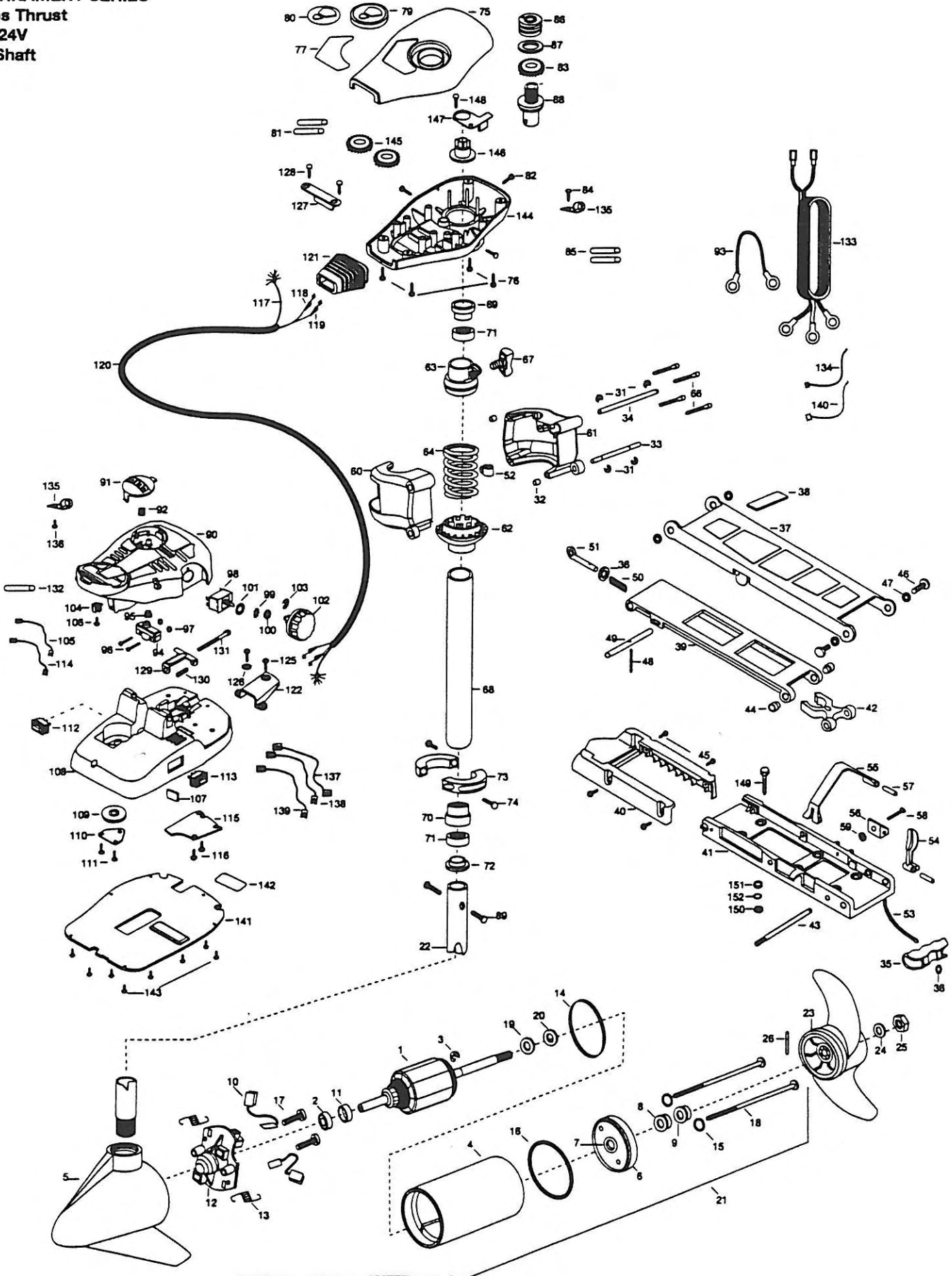


CABELA'S 65AT
TOURNAMENT SERIES
65 lbs Thrust
12V/24V
42" Shaft



1	2-100-009	ARMATURE ASSEMBLY	54	2287200	LATCH LEVER	103	2263000	E-RING TRU-ARC
2	140-010	BEARING-BALL	55	2263800	STRAP-HOLD DOWN	104	2260730	CONNECTOR 1/4 MALE TAB
3	788-015	RETAINING RING	56	2261910	BRACKET HOLD DOWN STRAP	105	2260315	CONNECTING WIRE-7-1/2"
4	431-005	CENTER HOUSING ASSEMBLY	57	2260500	PIN-ROLL LATCH LEVER [2.ea]	106	2332103	SCREW-6-20 X 3/8 THD SS
5	2-300-039	BRUSH END HOUSING SPDCO	58	2263440	SCREW-10-24 X 3/4	107	2266413	TENSION SCREW PLATE- FTPED
6	2-400-101	PLAIN END HOUSING	59	2333101	NUT-HEX 10-24 NYLOC	108	2992101	FT PED BASE/PIN ASSEMBLY
7	144-049	BEARING- FLANGE SERVICE ONLY	60	2261921	BRACKET BASE-LEFT	109	2262301	PULLEY FOOT PEDAL
8	880-003	SEAL	61	2261931	BRACKET BASE-RIGHT	110	2266400	COVER-PULLEY STAMPING
9	880-006	SEAL-W/SHIELD	62	2261535	SPRING SLEEVE, LOWER	111	2301310	SCREW-8-18 X 1/2 SS [2.ea]
10	188-036	BRUSH ASSEMBLY [2.ea]	63	2261525	SPRING-SLEEVE UPPER	112	2254031	SWITCH-MOM/OFF/COM
11	725-050	TUBE- BRUSH RETENTION	64	2262706	SPRING, BOWGUARD, NIK PL	113	2254032	SWITCH-12V/OFF/24V 65AT
12	738-036	BRUSH PLATE WITH HOLDER	65	2267300	BUSHING-DOWEL [2.ea]	114	2260300	CONNECTING WIRE-14"
13	975-040	SPRING- TORSION [2.ea]	66	2263470	SCREW-1/4-20 X 1-3/4 SS [4.ea]	115	2266412	SWITCH PLATE, FT PEDAL
14	337-036	GASKET	67	2011365	SCREW-COLLAR/NEW KNOB	116	2332103	SCREW-6-20 X 3/8 THD SS [2.ea]
15	701-008	O-RING THRU BOLT [2.ea]	68	2992015	TUBE W/BEARING RACE ASSEMBLY	117	2261208	WIRE HARNESS, A/T FT. PED
16	701-081	O-RING	69	2272066	TUBE OUTER-18" 4 HOLES	118	2267500	CABLE ASSEMBLY-RIGHT 5'
17	830-007	#8-32 SCREW [2.ea]	70	2266260	BEARING RACE	119	2267510	CABLE ASSEMBLY-LEFT 5'
18	830-008	THRU BOLT 10-32 X 0.205 [2.ea]	71	2266220	BEARING RACE-STEEL	120	2265430	CABLE JACKET 5"
19	990-067	WASHER- STEEL THRUST	72	2266000	BEARING BALL-STEEL [2.ea]	121	2265110	BOOT-CONTROL BOX
20	990-070	WASHER-NYLATRON	73	2266115	BEARING CONE	122	2265115	BOOT-FOOT PEDAL BASE
21	2098034	MOTOR ASSEMBLY 24V F/W 47.75 LDS	74	2281619	COLLAR HALF-ZINC-2 PER	125	2372100	SCREW-8-18 X 5/8 THD [2.ea]
22	2032063	TUBE- COMPW/CSK HOLE-42"	75	2263452	SCREW-1/4-20 X 3/4 [2.ea]	126	2261714	WASHER-MAXXUM FT PDL [2.ea]
23	1378122	PROPELLER KIT	76	2260265	COVER-CTR BOX A/T	127	2261900	BRACKET-CONDUIT
24	2091150	PROPELLER- W/WEDGE	77	2372100	SCREW-8-18 X 5/8 THD SS [4.ea]	128	2301310	SCREW-8-18 X 1/2 [2.ea]
25	2151726	WASHER- 5/16 SS	78	2265518	DECAL-COVER 65AT	129	2263210	BRACKET-CONDUIT ADJUSTMENT
26	2053101	NUT-PROP NYLOC MEDIUM	79	2265608	DECAL- CABELA'S TOUR.	130	2262720	SPRING-CONDUIT ADJUSTMENT
27	2092600	PIN-DRIVE 95-4HP'S	80	2260150	POINTER DISC TRNSLCNT RED	131	2263462	SCREW-1/4-20 X 2 S/S PPH
28	2263010	E-RING 3/8 DIA. SHAFT [4.ea]	81	2265800	DECAL-INDICATOR	132	2335400	SHRINK TUBE-1/2 OD X 2
29	2283500	BUSHING-SHOULDER UPPER ARM [2.ea]	82	2375400	SHRINK TUBE-1/4OD X 1-3/4 [2.ea]	133	2090611	LEADWIRE 12/24V
30	2260530	HINGE PIN-LOWER SS	83	2053414	SCREW-#8-32 X 1/2 TRI-LOBE [3.ea]	134	2256300	TIE WRAP-5.5' BLACK
31	2260520	HINGE PIN-UPPER	84	2267800	GEAR-INDICATOR	135	2263201	CLAMP WIRE HARNESS MICRO [2.ea]
32	2150400	PULL-GRIP	85	2301310	SCREW-8-18 X 1/2	136	2332103	SCREW-6-20 X 3/8 THD SS
33	2151700	WASHER-EYE SHAFT, 582 OD	86	2355410	SHRINK TUBE-3/8 OD X 2 [2.ea]	137	2260301	CONNECTING WIRE SWITCH
34	2991987	BOW MOUNT ASSEMBLY 50AT FW	87	2232360	PULLEY-CABLE DRUM	138	2260312	WIRE, BLK W/WHIT STRP 19 1/2"
35	2264221	ARM-UPPER STD FW	88	2261730	WASHER-NYLON A/T CON B	139	2260322	WIRE, BLK W/BLUE STRP-12"
36	2265120	BUMPER- UPPER ARM	89	2776246	TOP BEARING RACE /PINION DRIVE	140	2256301	TIE WRAP-5.5" WHITE
37	2254345	ARM- LWR FW MCHD	90	2263410	SCREW-8-32 X 5/16 ZN PL [2.ea]	141	2266414	BOTTOM PLATE A/T FOOT
38	2263900	MOTOR REST	91	2790002	FOOT PEDAL/PLUG ASSEMBLY AT	142	2365107	INSULATING PAD 2.3 X 3.2
39	2251942	BOW PLATE-D/C MCHD	92	2263700	PUSH-BUTTON FOOT PEDAL	143	9953104	SCREW-8 X 1/2 S/S [8.ea]
40	2293801	TUBE LOCK-D	93	2302732	SPRING-LOWER PEDAL SS	144	2262531	CONTROL BOX-PLASTIC
41	2260506	HINGE-PIN HEADLESS ZINC	94	2090620	CONNECTOR CABLE- 24VOLT	145	2287800	GEAR-INDICATOR [2.ea]
42	2236000	BEARING NYLINER- [2.ea]	95	2264020	SWITCH MOMENTARY	146	2262220	INDICATOR-DRIVE
43	2303431	SCREW 1/4-20 X 5/8 PPH [4.ea]	96	2265140	BOOT-MICROSWITCH	147	2261905	BRACKET/INDICATOR
44	2293511	BOLT-UPPER ARM W/LOCTITE [2.ea]	97	2262114	SCREW-MOUNTING/SWITCH [2.ea]	148	2301310	SCREW-8-18 X 1/2
45	2293500	BUSHING-SHOULDER UPPER ARM [2.ea]	98	2233100	NUT-SWITCH MOUNT [2.ea]	149	2994811	BAG ASSEMBLY-BOLTS, NUTS, WASHER
46	2152610	SPRING-PIN LOCKBAR	99	2264026	SWITCH-5 SPEED AT	150	2153501	BOLT-MOUNTING-3500 W/STGD [6.ea]
47	2233600	LOCK BAR- BOW MOUNT	100	2261701	LOCKWASHER -STAR	151	2153100	NUT-5/16-18NC MOUNTING [6.ea]
48	2152700	SPRING-LOCKBAR CAD. PLTD	101	2263105	NUT-HEX	152	2301720	WASHER- MOUNTING RUBBER [6.ea]
49	2153600	EYE SHAFT-CAD. PLATE	102	2261715	SPACER-SWITCH 5 SP MODELS		2151726	WASHER-5/16 STD SS [6.ea]
50	2262310	GUIDE-ROPE						
51	2251600	ROPE- 31'						

* This item is part of an assembly. This item cannot be sold separately due to machining and/or assembly that is required.

All Terrain Bowmount Series Wiring Diagrams

65AT

