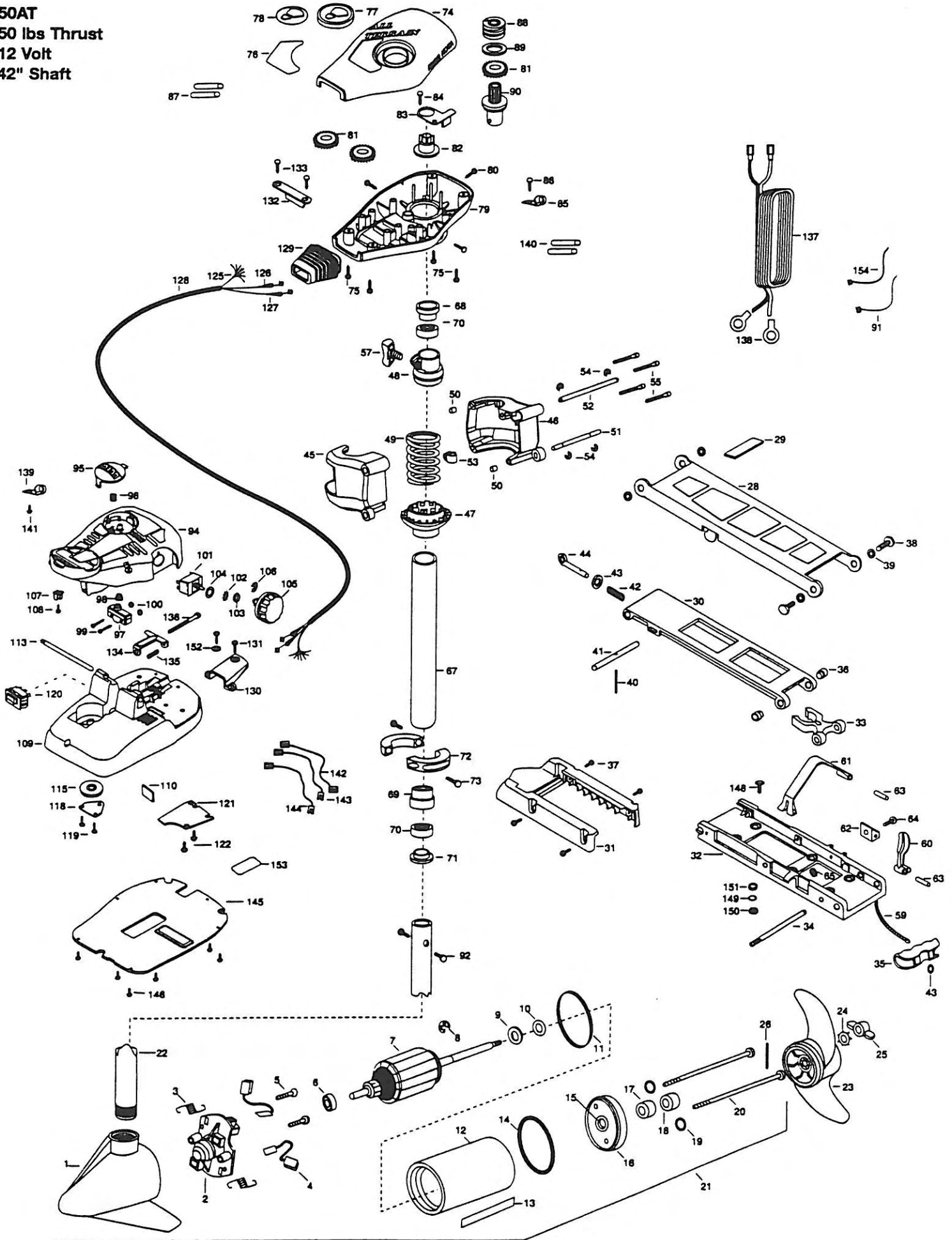


50AT
50 lbs Thrust
12 Volt
42" Shaft



1	2-300-196	BRUSH END HOUSING W/COIL	49	2262706	SPRING-BOWGUARD NIK PL1	100	2233100	NUT-SWITCH MOUNT [2.ea]
2	738-036	BRUSH PLATE ASSEMBLY 3.5/8 DIA	50	2267300	BUSHING-DOWEL [2.ea]	101	2264026	SWITCH-5 SPEED
3	975-040	SPRING- BRUSH [2.ea]	51	2260530	HINGE PIN-LOWER	102	2261701	LOCKWASHER-STAR
4	188-036	BRUSH [2.ea]	52	2260520	HINGE PIN-UPPER	103	2263105	NUT-HEX
5	830-002	BRUSH PLATE SCREW [2.ea]	53	2262310	GUIDE-ROPE	104	2261715	SPACER-SWITCH
6	140-010	BALL BEARING	54	2263010	E-RING 3/8 DIA. SHAFT [4.ea]	105	2260170	KNOB-SPEED OONTRON
7	2-100-098	ARMATURE ASSEMBLY	55	2263470	SCREW-1/4-20 X 1-3/4 [4.ea]	106	2263000	E-RING
8	788-015	E-RING-ARMATURE	■	2991944	BOWGUARD ASSEMBLY (INCL 45-50,55,57)	107	2260730	CONNECTOR 1/4 MALE TAB
9	990-067	WASHER-THRUST (STEEL)	57	2011365	SCREW-COLLAR/NEW KNOB	108	2332103	SCREW-6-20 X 3/8
10	990-070	WASHER-NYLATRON THRUST	59	2251600	ROPE	109	2774550	FOOT PEDAL BASE/PIN ASSEMBLY
11	337-036	GASKET	60	2267200	LATCH LEVER	*110	2266413	TENSION SCREW-PLATE
12	2-200-101	CENTER HOUSING FIELD ASSEMBLY	61	2263800	STRAP-HOLD DOWN	113	2260511	PIN-PIVOT
13	2006603	DECAL LOWER UNIT WHITE	62	2261910	BRACKET HOLD DOWN STRAP	115	2262301	PULLEY (FOOT PEDAL)
14	701-081	O-RING	63	2260500	PIN-ROLL LATCH LEVER [2.ea]	118	2266400	COVER-PULLEY
15	144-049	BEARING-(FLANGE,SERVICE ONLY)	64	2263440	SCREW-10-24 X 3/4	119	2301310	SCREW-8-18 X 1/2 [2.ea]
16	2-400-101	PLAIN END HOUSING	65	2333101	NUT-HEX	120	2254031	SWITCH-MOM/OFF/COM
17	880-003	SEAL	■	2772015	TUBE W/BEARING RACE ASSEMBLY	121	2266412	SWITCH PLATE, FT PEDAL
18	880-006	SEAL-W/CUP	67	2272066	TUBE OUTER-18*	122	2332103	SCREW 6-20 X 3/8 [2.ea]
19	701-008	O-RING THRU BOLT [2.ea]	68	2266260	BEARING RACE-(565T)	125	2261208	WIRE HARNESS A/T FT PEDAL
20	830-042	THRU BOLT [2.ea]	69	2266220	BEARING RACE- STEEL	126	2267500	CABLE ASSEMBLY-RIGHT (5')
21	2099030	MOTOR ASSEMBLY	70	2266000	BEARING- BALL [2.ea]	127	2267510	CABLE ASSEMBLY-LEFT (5')
22	2032063	TUBE COMP W/CSK HOLE	71	2266115	BEARING CONE	128	2265430	CABLE JACKET (5')
23	2091150	PROPELLER (W.WEDGE)	72	2261617	COLLAR HALF [2.ea]	129	2265110	BOOT-CONTROL BOX
24	2051700	LOCKWASHER-PROP (MEDIUM)	73	2263452	SCREW-1/4-20 X 3/4 [2.ea]	130	2265115	BOOT-FOOT PEDAL BASE
25	2053100	NUT-PROP (MEDIUM)	74	2260265	COVER-CTR BOX	131	2372100	SCREW-8-18 X 5/8 THD [2.ea]
26	2092600	PIN-DRIVE	75	2372100	SCREVV-8-18 X 1/2 [4.ea]	132	2261900	BRACKET-CONDUIT
■	2991987	BOWMOUNT ASSEMBLY FW 50AT	76	2265519	DECAL-COVER 50AT	133	2301310	SCREW-8-18 X 1/2 [2.ea]
28	2264221	ARM-UPPER FW/STD	77	2260150	POINTER DISC TRANSLCNT RED	134	2263210	BRACKET-CONDUIT ADJUST
29	2265120	BUMPER (UPPER ARM)	78	2265800	DECAL-INDICATOR	135	2262720	SPRING-CONDUIT
■	2774304	LOWER ARM ASSEMBLY	79	2262531	CONTROL BOX-PLASTIC	136	2263462	SCREW-1/4-20 X 2 SS PPH
30	2254345	ARM-LWR FW	80	2053414	SCREW-8-32 X 1/2 TRI-LOBE [3.ea]	137	2261225	LEADWIRE-BATTERY
31	2263900	MOTOR REST	81	2267800	GEAR-INDICATOR [3.ea]	138	2020700	TERMINAL RING, 3/8 [2.ea]
32	2251942	BOW PLATE	82	2262220	INDICATOR-DRIVE	139	2263201	CLAMP WIRE HARNESS MICO
33	2293801	TUBE LOCK	83	2261905	BRACKET-INDICATOR	140	2375400	SHRINK TUBE 1/4 X 1-3/4 [2.ea]
34	2260506	HINGE-PIN (HEADLESS)	84	2301310	SCREW-8-18 X 1/2	141	2332103	SCREW-6-20 X 3/8
35	2150400	PULL-GRIP	85	2263201	CLAMP WIRE HARNESS MICRO	142	2260301	CONNECTING WIRE (SWITCH)
36	2236000	BEARING NYLINER [2.ea]	86	2301310	SCREW-8-18 X 1/2	143	2260312	WIRE- BLK/WHT 18 1/4"
37	2303431	SCREW 1/4-20X5/8 (4 REQ'D)	87	2355410	SHRINK TUBE-3/8 [2.ea]	144	2260322	WIRE- BLK/BLU 12"
38	2293511	BOLT-UPPER ARM [2.ea]	88	2232360	PULLEY-CABLE DRUM	145	2266414	BOTTOM PLATE MAX FTPDL
39	2293500	BUSHING-SHOULDER (4 REQ'D)	89	2261730	WASHER-NYLON	146	9953104	SCREW- 8 X 1/2 [8.ea]
40	2152610	SPRING-PIN (LOOKBAR)	90	2778204	BEARING RACE/ PINION ASSEMBLY	147	2994811	BAG ASSY-(BOLT5,NUTS,WASHERS)
41	2233600	LOCK BAR- (BOW MOUNT)	91	2256031	TIE WRAP 5.5" WHITE	*148	2153501	BOLT-MOUNTING- [6.ea]
42	2152700	SPRING-(LOCKBAR)	92	2263410	SCREW-8-32 X 5/16 [2.ea]	*149	2151726	WASHER-5/16 [6.ea]
43	2151700	WASHER-EYE SHAFT [2.ea]	94	2790002	FOOT PEDAL/PLUG ASSEMBLY	*150	2153100	NUT-5/16-MOUNTING [6.ea]
44	2153600	EYE SHAFT	95	2263700	PUSH-BUTTON FOOT PEDAL	*151	2301720	WASHER-RUBBER [6.ea]
45	2261921	BRACKET BASE-LEFT	96	2302732	SPRING-LOWER PEDAL	152	2261714	WASHER- MAXXUM FT PDL [2.ea]
46	2261931	BRACKET BASE-RGHT	97	2264020	SWITCH MOMENTARY	154	2256300	TIE WRAP- 5.5"
47	2261535	SPRING SLEEVE LWR	98	2265140	BOOT-MICROSWITCH			
48	2261525	SPRING-SLEEVE UPPER	99	2262114	SCREW-MOUNTING/SWITCH [2.ea]			

50 AT - 42"

* This item is part of an assembly. This item cannot be sold separately due to machining and /or assembly that is required.

All Terrain Bowmount Series Wiring Diagrams

30AT, 36AT, 40AT, 42AT, 50AT

