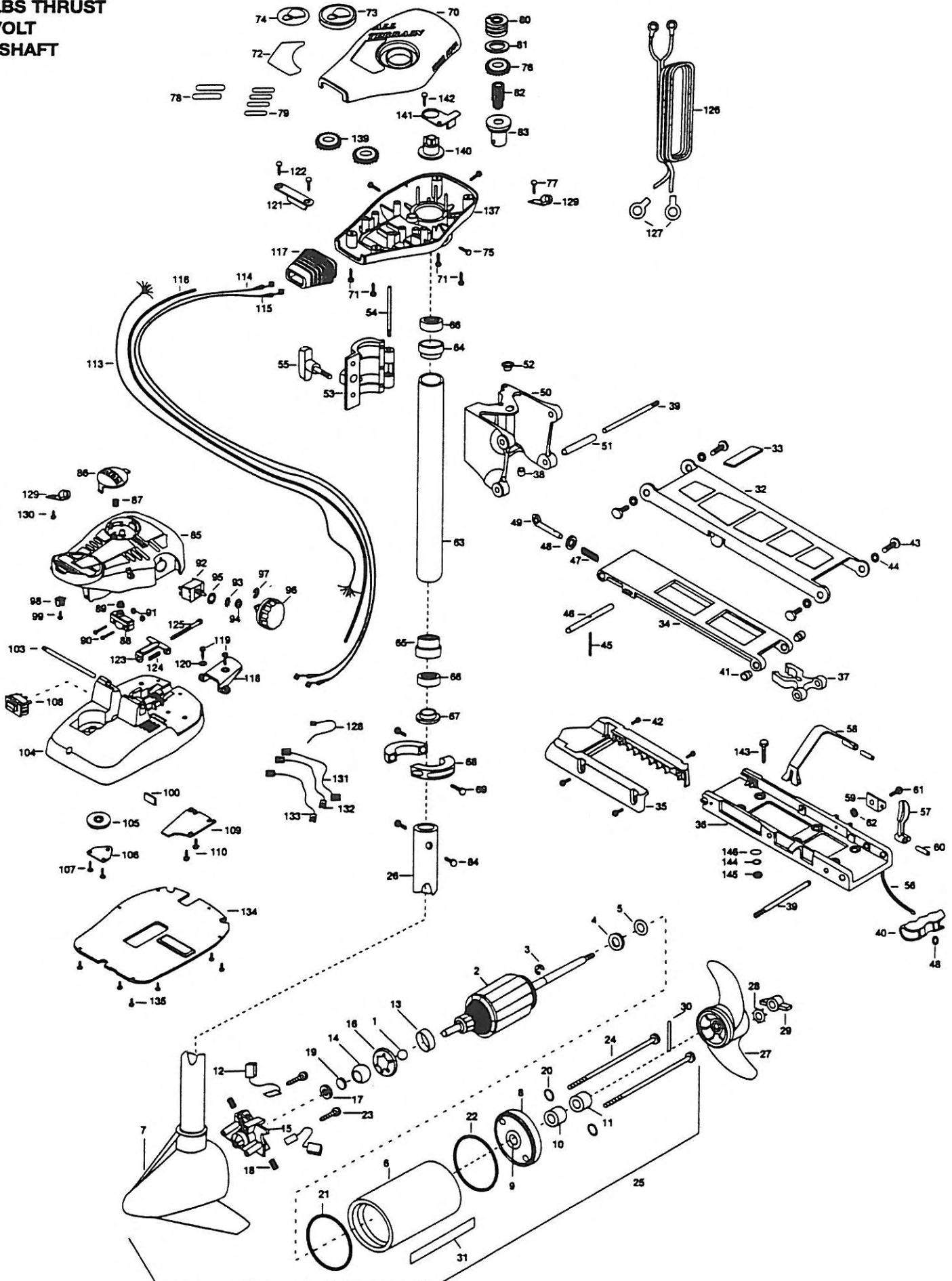


40AT/FC  
40 LBS THRUST  
12 VOLT  
42" SHAFT



1	116-020	BALL - STEEL	49	2153600	EYE SHART - CAD.PLATE	98	2260730	CONNECTOR 1/4 MALE TAB
2	2-100-001	ARM ASSEMBLY 12V 3.25	50	2261811	HINGE BASE - (FW)	99	2332103	SCREW - 6 - 20 X 3/8
3	788-015	RETAINING RING	51	2231570	SLEEVE ROLLER (HINGE BRACKET)	100	2266413	TENSION SCREW PLATE FT PEDL
4	990-067	WASHER - STEEL THRUST	52	2232350	EYELET - ROPE	103	2260511	PIN - PIVOT A/T FT PDL
5	990-070	WASHER - NYLATRON	53	2261821	HINGE DOOR - PAINTED FW	104	2774550	FT PEDAL BASE/PIN ASSEMBLY
6	431-079	HOUSING ASSEMBLY CENTER 3.25 TXT	54	2262640	PIN - HINGE DOOR	105	2262301	PULLEY (FOOT PEDAL)
7	2-300-132	HOUSING ASSEMBLY BRUSH END 3.25	55	2260180	KNOB - HINGE COVER A/T	106	2266400	COVER - PULLEY (STAMPING)
8	2-400-124	PLAIN END HOUSING ASSEMBLY	56	2251600	ROPE - (31")	107	2301310	SCREW - 8 - 18 X 1/2 [2. EA]
9	144-049	BEARING - FLANGE [SERVICE ONLY]	57	2267200	LATCH LEVER - (565T)	108	2254031	SWITCH - MOM/OFF/COM
10	880-003	SEAL	58	2263800	STRAP - HOLD DOWN (565T)	109	2266412	SWITCH PLATE, FT PEDAL
11	880-006	SEAL WITH SHIELD	59	2261910	BRACKET HOLD DOWN STRAP	110	2332103	SCREW - 6 - 20 X 3/8 THD [2. EA]
12	188-052	BRUSH ASSEMBLY [2.EA ]	60	2260500	PIN - ROLL LATCH LEVER [2. EA]	113	2261208	WIRE HARNESS, A/T FT. PED
13	725-033	BRUSH RETENTION - PAPER TUBE	61	2263440	SCREW - 10 - 24 X 34	114	2267500	CABLE ASSEMBLY - RIGHT (5')
14	144-050	BEARING - SPHERICAL	62	2333101	NUT - HEX 3HP-SS NYLOC	115	2267510	CABLE ASSEMBLY - LEFT (5')
15	738-030	BRUSH PLATE W/HOLDER 3.25	63	2272015	TUBE W/BEARING RACE ASSEMBLY	116	2265430	CABLE JACKET (5')
16	784-036	BEARING RETAINER	64	2272066	TUBE OUTER - 18" 4 HOLES	117	2265110	BOOT - CONTROL BOX
17	991-025	WASHER - FELT	65	2266260	BEARING RACE - (565T)	118	2265115	BOOT - FOOT PEDAL BASE
18	975-032	SPRING - COMPRESSION	66	2266220	BEARING RACE - STEEL	119	2372100	SCREW - 8 - 18 X 5/8 THD [2. EA]
19	303-039	THRUST DISC - METAL	67	2266000	BEARING BALL - STEEL [2. EA]	120	2261714	WASHER - MAXXUM FT PDL [2. EA]
20	701-007	O-RING [2. EA]	68	2266115	BEARING CONE	121	2261900	BRACKET - CONDUIT
21	701-041	O-RING	69	2261615	COLLAR HALF - ZINC - [2. EA]	122	2301310	SCREW - 8 - 18 X 1/2 [2. EA]
22	701-039	O-RING MK406460	70	2263450	SCREW - 10 - 24 X 7/8 [2. EA]	123	2263210	BRACKET - CONDUIT ADJUSTMENT
23	830-001	SCREW - SELF-THREAD 8 - 32 X 1.7 [2.EA ]	71	2260264	COVER - CTR BOX A/T	124	2262720	SPRING - CONDUIT ADJUSTMENT
24	830-078	THRU BOLT 8 - 32 X 8.96 [2. EA]	72	2372100	SCREW - 8 - 18 X 5/8 THD [4. EA]	125	2263462	SCREW - 1/4 - 20 X 2 SS PPH
25	2068050	MTR ASSEMBLY 12V 3.25 5SPD	73	2265621	DECAL - COVER (40AT/FC)	126	2261225	LEADWIRE - BATTERY
26	2032063	TUBE (COMP) W/CSK HOLE 42"	74	2260150	POINTER DISC TRNSLCONT RED	127	2020700	TERMINAL RING, 3/8" [2. EA]
27	1378126	PROP KIT INCL 27, 28, 29, 30	75	2265800	DECAL - INDICATOR	128	2256300	TIE WRAP - 5.5" BLACK
28	2051700	LOCKWASHER - PLOP (MEDIUM)	76	2262109	SCREW - 8 - 32 X 1/2 THD CUT [3. EA]	129	2263201	CLAMP WIRE HARNESS MICRO
29	2053100	NUT - PROP (MEDIUM)	77	2267800	GEAR - INDICATOR	130	2332103	SCREW - 6 - 20 X 3/8 THD
30	2092600	PIN - DRIVE (95-4HP'S) (SS)	78	2301310	SCREW - 8 - 18 X 1/2 (SS)	131	2260301	CONNECTING WIRE (SWITCH)
31	2006603	DECAL - LOWER UNIT, WHITE	79	2375400	SHRINK TUBE - 1/40D X 1-3/4 [2. EA]	132	2260312	WIRE, BLK W/WHT - 19 1/2
32	2264221	STD - BOWMT FW 30, 33, 36AT	80	2355410	SHRINK TUBE - 3/8 OD X 2 [2. EA]	133	2260322	WIRE, BLK W/BLUE - 12"
33	2265120	ARM - UPPER, STD, FW	81	2232360	PULLEY - CABLE DRUM	134	2266411	BOTTOM PLATE A/T FOOT
34	2774310	BUMPER (UPPER ARM)	82	2261730	WASHER - NYLON A/T	135	9953104	SCREW - 8 X 1/2" (S/S) [8. EA]
35	2254342	ARM - LOWER FW ASSEMBLY	83	2776203	BEARING RACE/PINION ASSEMBLY	137	2262531	CONTROL BOX - PLASTIC
36	2263900	[INCL.34, 45, 46, 47, 48, 49, 40, 56]	84	2267805	PINION DRIVE (ZINC PLATED)	139	2267800	GEAR - INDICATOR [2. EA]
37	2263900	ARM - LWR FW (MCBD)	85	2266245	BEARING RACE - (TOP) (565T)	140	2262220	INDICATOR - DRIVE
38	2251942	MOTOR REST- 565 TURBO	86	2263410	SCREW - 8 - 32 X 5/16 (ZN PL) [2. EA]	141	2261905	BRACKET/INDICATOR
39	2293801	BOW PLATE - DC (MCHD)	87	2790002	FOOT PEDAL/PLUG ASSEMBLY(AT)	142	2301310	SCREW - 8 - 18 X 1/2 (S/S)
40	2293801	TUBE LOCK - "D"	88	2263700	PUSH - BUTTON FOOT PEDAL	143	2994803	BAG ASSEMBLY - (INCL.143, 144, 145, 146)
41	2264705	INSERT - HINGE BASE (STD MT)	89	2302732	SPRING - LOWER PEDAL S/S	144	2153501	BOLT - MOUNTING - W / STGD [4. EA]
42	2260506	HINGE - PIN (HEADLESS) ZINC [2. EA]	90	2284020	SWITCH MOMENTARY	145	2151726	WASHER - 5/16 STD [4. EA]
43	2150400	PULL - GRIP	91	2265140	BOOT - MICROSWITCH	146	2153100	NUT - 5/16 - 18 MOUNTING [4. EA]
44	2236000	BEARING NYLINER - [2. EA]	92	2262114	SCREW - MOUNTING/SWITCH [2. EA]		2301720	WASHER.MOUNTING RUBBER [6. EA]
45	2303431	SCREW 1/4 - 20 X 5/8" PPH [4. EA]	93	2233100	NUT - SWITCH MOUNT [2. EA]			
46	2293511	BOLT - UPPER ARM W/LOCTITE [4. EA]	94	2264026	SWITCH - S SPEED			
47	2293500	BUSHING - SHOULDER (UPPER ARM) [2. EA]	95	2261701	LOCKWASHER - STAR			
48	2152610	SPRING - PIN (LOCKEAR)	96	2263105	NUT - HEX			
49	2152600	LOCK BAR - (BOW MOUNT)	97	2261715	SPACER - SWITCH 5 SP MODELS			
50	2152700	SPRING - (LOCKBAR) CAD.PLTJ		2260170	KNOB - SPEED CONTROL (5 SPD)			
51	2151700	WASHER - EYE SHAFT (.562 OD) [2. EA]		2263000	E-RING TRU-ARC			

\* THIS ITEM IS PART OF AN ASSEMBLY. THIS ITEM CANNOT BE SOLD SEPARATELY DUE TO MACHINING AND /OR ASSEMBLY THAT IS REQUIRED.

# All Terrain Bowmount Series Wiring Diagrams

30AT, 36AT, 40AT, 42AT, 50AT

