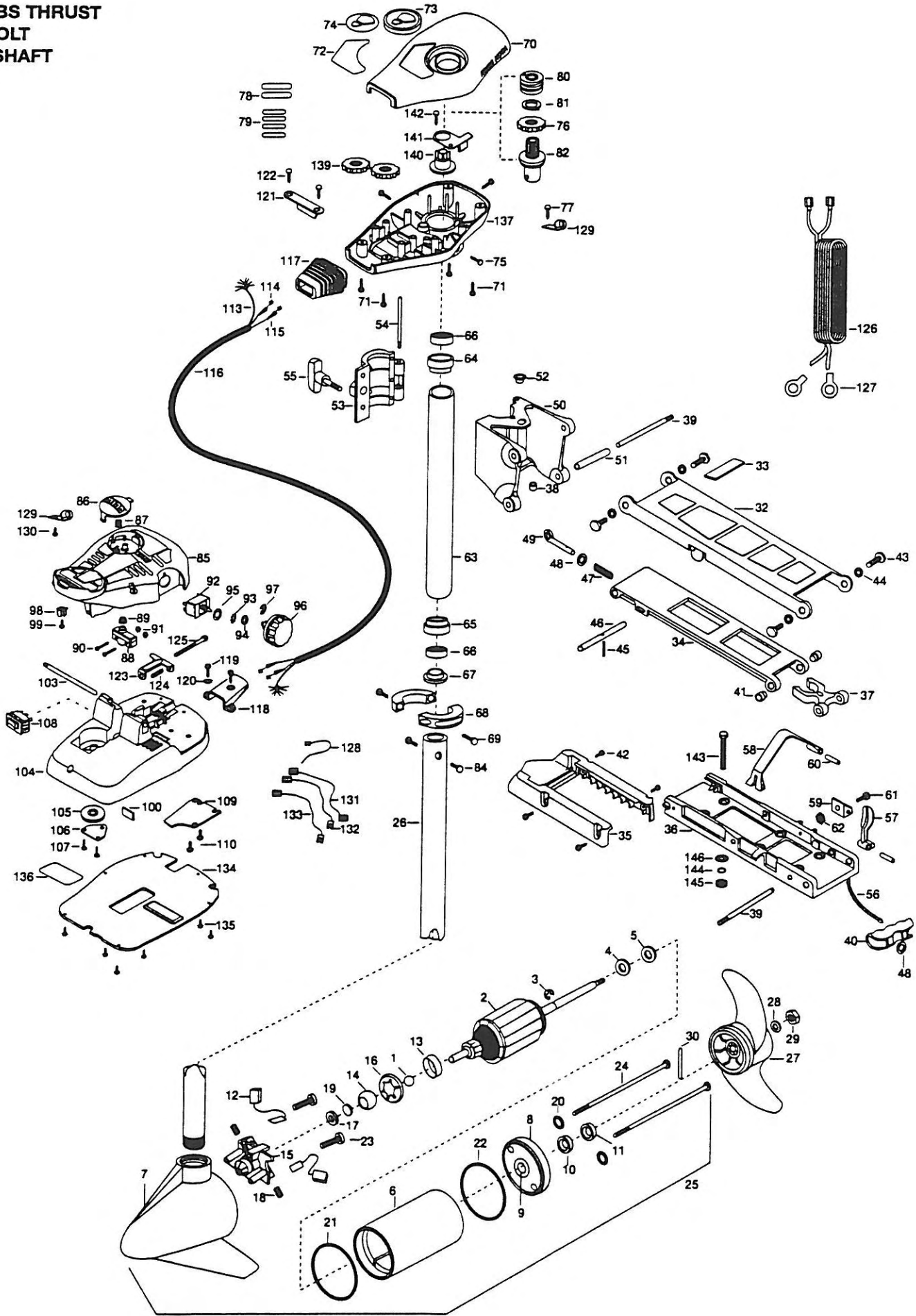


**36AT**  
**36 LBS THRUST**  
**12 VOLT**  
**36" SHAFT**



|     |           |   |    |         |                                   |      |         |                                       |
|-----|-----------|---|----|---------|-----------------------------------|------|---------|---------------------------------------|
| 1   | 116-020   | BALL - STEEL  | 47 | 2152700 | SPRING- LOCKBAR CAD.PLT           | 96   | 2260170 | KNOB-SPEED CONTROL 5 SPD              |
| 2   | 2-100-178 | ARM ASSEMBLY 12V 3.25                                       | 48 | 2151700 | WASHER-EYE SHAFT .562 OD [2. EA]  | 97   | 2263000 | E-RING TRU-ARC                        |
| 3   | 788-015   | RETAINING RING  | 49 | 2153600 | EYE SHART-CAD.PLATE               | 98   | 2260730 | CONNECTOR 1/4 MALE TAB                |
| 4   | 990-067   | WASHER - STEEL THRUST                                       | 50 | 2261811 | HINGE BASE-(F/W)                  | 99   | 2332103 | SCREW-6-20 X 3/8                      |
| 5   | 990-070   | WASHER - NYLATRON   | 51 | 2231570 | SLEEVE ROLLER -HINGE BRACKET      | 100  | 2266413 | TENSION SCREW PLATE FT PEDL           |
| 6   | 431-079   | HOUSING ASSEMBLY CENTER 3.25 TXT                            | 52 | 2232350 | EYELET-ROPE                       | 103  | 2260511 | PIN-PIVOT A/T FT PDL                  |
| 7   | 2-300-132 | HOUSING ASSEMBLY BRUSH END 3.25                             | 53 | 2261821 | HINGE DOOR-PAINTED F/W            | 104  | 2992100 | FT PEDAL BASE/PIN ASSEMBLY            |
| 8   | 2-400-127 | PLAIN END HOUSING ASSEMBLY                                  | 54 | 2262640 | PIN-HINGE DOOR                    | 105  | 2262301 | PULLEY (FOOT PEDAL)                   |
| 9   | 144-049   | BEARING - FLANGE [SERVICE ONLY]                             | 55 | 2260183 | KNOB-HINGE COVER A/T FW           | 106  | 2266400 | COVER-PULLEY (STAMPING)               |
| 10  | 880-003   | SEAL  | 56 | 2251600 | ROPE- 31*                         | 107  | 2223430 | SCREW- 8-3/4 PPH TYPE 25 [2. EA]      |
| 11  | 880-006   | SEAL WITH SHIELD  | 57 | 2267200 | LATCH LEVER                       | 108  | 2254031 | SWITCH-MOM/OFF/COM                    |
| 12  | 188-052   | BRUSH ASSEMBLY [2. EA ]                                     | 58 | 2263800 | STRAP-HOLD DOWN                   | 109  | 2266412 | SWITCH PLATE, FT PEDAL                |
| 13  | 725-033   | BRUSH RETENTION- PAPER TUBE                                 | 59 | 2261910 | BRACKET HOLD DOWN STRAP           | 110  | 2332103 | SCREW-6-20 X 3/8 THD [2. EA]          |
| 14  | 144-050   | BEARING - SPHERICAL   | 60 | 2260500 | PIN-ROLL LATCH LEVER [2. EA]      | 113  | 2261208 | WIRE HARNESS, A/T FT. PED             |
| 15  | 738-030   | BRUSH PLATE W/HOLDER 3.25                                   | 61 | 2263440 | SCREW-10-24 X 3/4                 | 114  | 2267500 | CABLE ASSEMBLY-RIGHT 5'               |
| 16  | 784-036   | BEARING RETAINER  | 62 | 2333101 | NUT-HEX 3HP-SS NYLOC              | 115  | 2267510 | CABLE ASSEMBLY-LEFT 5'                |
| 17  | 991-025   | WASHER - FELT   | ■  | 2772015 | TUBE W/BEARING RACE ASSEMBLY      | 116  | 2265430 | CABLE JACKET 5'                       |
| 18  | 975-032   | SPRING - COMPRESSION  | 63 | 2272066 | TUBE OUTER-18" 4 HOLES            | 117  | 2265110 | BOOT-CONTROL BOX                      |
| 19  | 303-039   | THRUST DISC - METAL   | 64 | 2266260 | BEARING RACE                      | 118  | 2265115 | BOOT-FOOT PEDAL BASE                  |
| 20  | 701-007   | O-RING [2. EA]  | 65 | 2266220 | BEARING RACE-STEEL                | 119  | 2372100 | SCREW-8-18 X 5/8 THD [2. EA]          |
| 21  | 701-041   | O-RING  | 66 | 2266000 | BEARING BALL-STEEL [2. EA]        | 120  | 2261714 | WASHER-MAXXUM FT PDL [2. EA]          |
| 22  | 701-039   | O-RING MK406460   | 67 | 2266115 | BEARING CONE                      | 121  | 2261900 | BRACKET-CONDUIT                       |
| 23  | 830-001   | SCREW - SELF-THREAD 8-32 X 1.7 [2.EA ]                      | 68 | 2261619 | COLLAR HALF-ZINC- [2. EA]         | 122  | 2301310 | SCREW-8-18 X 1/2 [2. EA]              |
| 24  | 830-078   | THRU BOLT 8-32 X 8.96 [2. EA]                               | 69 | 2263452 | SCREW-1/4-20X3/4 SS SHCS [2. EA]  | 123  | 2263210 | BRACKET- CONDUIT ADJUSTMENT           |
| 25  | 2069041   | MOTOR ASSEMBLY 12V 3.25 5SPD                                | 70 | 2260264 | COVER-CTR BOX A/T                 | 124  | 2262720 | SPRING-CONDUIT ADJUSTMENT             |
| 26  | 2032062   | TUBE- COMPOSITE W/CSK HOLE 36"                              | 71 | 2372100 | SCREW-8-18 X 5/8 THD [4. EA]      | 125  | 2263463 | SCREW-1/4-20 X 2 STL PPH              |
| ■   | 1378126   | PROP KIT INCL. 27, 28, 29, 30                               | 72 | 2265625 | DECAL-COVER (36AT)                | 126  | 2261225 | LEADWIRE-BATTERY                      |
| 27  | 2061125   | PROPELLER- WEEDLESS WEDGE                                   | 73 | 2260150 | POINTER DISC TRNSLCNT RED         | 127  | 2020700 | TERMINAL RING, 3/8" [2. EA]           |
| 28  | 2151726   | WASHER- 5/16 STD SS   | 74 | 2265800 | DECAL-INDICATOR                   | 128  | 2256300 | TIE WRAP-5.5" BLACK                   |
| 29  | 2053101   | NUT- PROP NYLOC   | 75 | 2053414 | SCREW-8-32 X 1/2 TRI LOBE [3. EA] | 129  | 2263201 | CLAMP WIRE HARNESS MICRO              |
| 30  | 2092600   | PIN-DRIVE SS  | 76 | 2267800 | GEAR-INDICATOR                    | 130  | 2332103 | SCREW-6-20 X 3/8 THD                  |
| ■   | 2771970   | STD-BOWMOUNT FW 30, 33, 36AT                                | 77 | 2301310 | SCREW-8-18 X 1/2 SS               | 131  | 2260301 | CONNECTING WIRE- SWITCH               |
| 32  | 2264221   | ARM-UPPER, STD, FW  | 78 | 2375400 | SHRINK TUBE-1/4OD X 1-3/4 [2. EA] | 132  | 2260312 | WIRE,BLK W/WHT- 19 1/2                |
| 33  | 2265120   | BUMPER UPPER ARM  | 79 | 2355410 | SHRINK TUBE-3/8 OD X 2 [2. EA]    | 133  | 2260322 | WIRE,BLK W/BLUE -12"                  |
| ■   | 2774310   | ARM-LOWER FW ASSEMBLY [INCL.34, 45, 46, 47, 48, 49, 40, 56] | 80 | 2232360 | PULLEY-CABLE DRUM                 | 134  | 2266414 | BOTTOM PLATE MAX FOOT PEDAL           |
| 34  | 2254342   | ARM-LWR FW MCHD   | 81 | 2261730 | WASHER-NYLON A/T                  | 135  | 9953104 | SCREW-8 X 1/2" SS [8. EA]             |
| 35  | 2263900   | MOTOR REST  | 82 | 2776203 | BEARING RACE/ PINION ASSEMBLY     | 136  | 2265606 | DECAL-ALL TERRAIN FT PDL              |
| 36  | 2251942   | BOW PLATE-D C MCHD  | 84 | 2263410 | SCREW-8-32 X 5/16 ZN PL [2. EA]   | 137  | 2262535 | CONTROL BOX-PLASTIC A/T               |
| 37  | 2293801   | TUBE LOCK- "D"  | 85 | 2790002 | FOOT PEDAL/PLUG ASSEMBLY          | 139  | 2267800 | GEAR-INDICATOR [2. EA]                |
| *38 | 2264705   | INSERT-HINGE BASE STD MT                                    | 86 | 2263700 | PUSH-BUTTON FOOT PEDAL            | 140  | 2262220 | INDICATOR-DRIVE                       |
| 39  | 2260506   | HINGE-PIN HEADLESS ZINC [2. EA]                             | 87 | 2302732 | SPRING-LOWER PEDAL SS             | 141  | 2261905 | BRACKET/INDICATOR                     |
| 40  | 2150400   | PULL-GRIP   | 88 | 2264020 | SWITCH MOMENTARY                  | 142  | 2301310 | SCREW-8-18 X 1/2 SS                   |
| 41  | 2236000   | BEARING NYLINER- [2. EA]                                    | 89 | 2265140 | BOOT-MICROSWITCH                  | ■    | 2994803 | BAG ASSEMBLY-(INCL.143, 144, 145, 146 |
| 42  | 2303431   | SCREW 1/4-20 X 5/8" PPH [4. EA]                             | 90 | 2262114 | SCREW-MOUNTING/SWITCH [2. EA]     | *143 | 2153501 | BOLT-MOUNTING- W / STGD [4. EA]       |
| 43  | 2293511   | BOLT-UPPER ARM W/LOCTITE [4. EA]                            | 91 | 2233100 | NUT-SWITCH MOUNT [2. EA]          | *144 | 2151726 | WASHER-5/16 STD [4. EA]               |
| 44  | 2293500   | BUSHING-SHOULDER (UPPER ARM) [2. EA]                        | 92 | 2264026 | SWITCH- 5 SPEED                   | *145 | 2153100 | NUT-5/16-18 MOUNTING [4. EA]          |
| 45  | 2152610   | SPRING-PIN (LOCKEAR)  | 93 | 2261701 | LOCKWASHER-STAR                   | *146 | 2301720 | WASHER.MOUNTING RUBBER [6. EA]        |
| 46  | 2233600   | LOCK BAR- BOW MOUNT   | 94 | 2263105 | NUT-HEX                           |      |         |                                       |
|     |           |   | 95 | 2261715 | SPACER-SWITCH 5 SP MODELS         |      |         |                                       |

\* THIS ITEM IS PART OF AN ASSEMBLY. THIS ITEM CANNOT BE SOLD SEPARATELY DUE TO MACHINING AND /OR ASSEMBLY THAT IS REQUIRED

