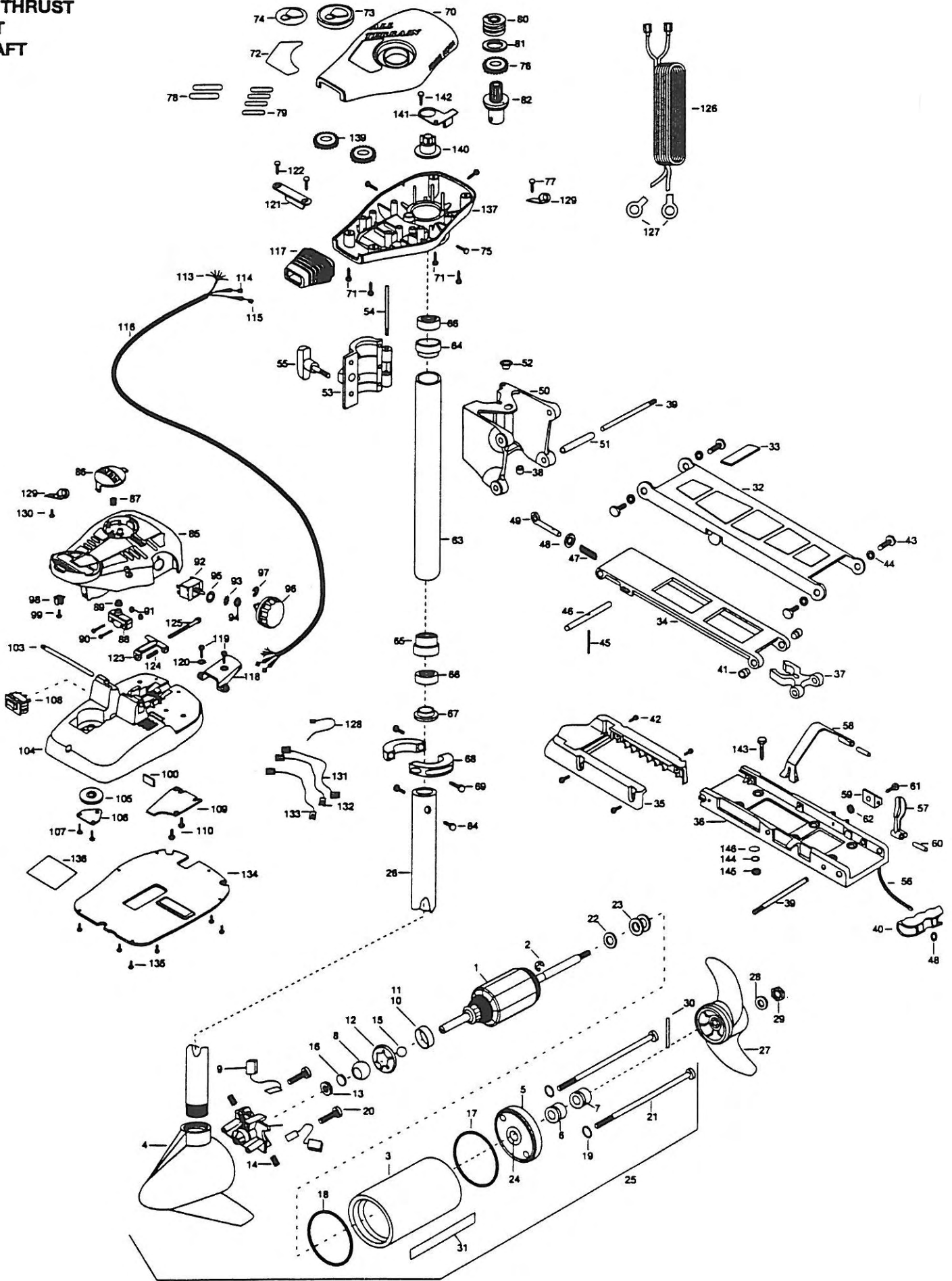


30AT
30 LBS THRUST
12 VOLT
42" SHAFT



1	2-100-077	ARMATURE ASSEMBLY 12V 3.25 5SPDC TXT	47	2152700	SPRING - (LOCKBAR) CAD.PLTI	97	2263000	E-RING TRU-ARC
2	788-015	RETAINING RING	48	2151700	WASHER - EYE SHAFT (.562 OD) [2.EA]	98	2260730	CONNECTOR 1/4 MALE TAB
3	431-177	HOUSING ASSEMBLY CENTER 3 25 TXT	49	2153600	EYE SHART - CAD.PLATE	99	2332103	SCREW - 6 - 20 X 3/8
4	2-300-132	BRUSH END HOUSING ASSEMBLY	50	2261811	HINGE BASE - (F/W)	100	2266413	TENSION SCREW PLATE FOOT PEDAL
5	2-400-127	PLAIN END HOUSING ASSEMBLY	51	2231570	SLEEVE ROLLER (HINGE BRACKET)	103	2260511	PIN - PIVOT A/T FOOT PEDAL
6	880-003	SEAL	52	2232350	EYELET - ROPE	104	2992100	FT PEDAL BASE/PIN ASSEMBLY
7	880-006	SEAL W/SHEILD	53	2261821	HINGE DOOR - PAINTED F/W	105	2262301	PULLEY (FOOT PEDAL)
8	144-050	BEARING - SPHERICAL	54	2262640	PIN - HINGE DOOR	106	2266400	COVER - PULLEY (STAMPING)
9	188-052	BRUSH ASSEMBLY [2.EA]	55	2260180	KNOB - HINGE COVER A/T	107	2301310	SCREW - 8 - 18 X 1/2 [2.EA]
10	725-033	PAPER TUBE - BRUSH RETENTION	56	2251600	ROPE - (31")	108	2254031	SWITCH - MOM/OFF/COM
11	738-030	BRUSH PLATE W/HOLDER 3.25	57	2267200	LATCH LEVER - (565T)	109	2266412	SWITCH PLATE, FT PEDAL
12	784-036	BEARING RETAINER	58	2263800	STRAP - HOLD DOWN (565T)	110	2332103	SCREW - 6 - 20 X 3/8 THD [2.EA]
13	991-025	WASHER FELT	59	2261910	BRACKET HOLD DOWN STRAP	113	2261208	WIRE HARNESS, A/T FOOT PEDAL
14	975-032	SPRING - COMPRESSION [2.EA]	60	2260500	PIN - ROLL LATCH LEVER [2.EA]	114	2267500	CABLE ASSEMBLY - RIGHT (5')
15	116-020	BALL - STEEL	61	2263440	SCREW - 10 - 24 X 3/4	115	2267510	CABLE ASSEMBLY - LEFT (5')
16	303-039	THRUST DISK	62	2333101	NUT - HEX 3HP-SS NYLOC	116	2265430	CABLE JACKET (5')
17	701-007	O-RING - THRU BOLT [2.EA]	63	2272015	TUBE W/BEARING RACE ASSEMBLY	117	2265110	BOOT - CONTROL BOX
18	701-039	O-RING MK406460	64	2272066	TUBE OUTER - 18" 4 HOLES	118	2265115	BOOT - FOOT PEDAL BASE
19	701-041	O-RING	65	2266260	BEARING RACE - (565T)	119	2372100	SCREW - 8 - 18 X 5/8 THD [2.EA]
20	830-001	SCREW - SELF-THREAD 8 - 32 X 1.7 [2.EA]	66	2266220	BEARING RACE - STEEL	120	2261714	WASHER - MAXXUM FOOT PEDAL [2.EA]
21	830-076	THRU BOLT 8 - 32 X 8.0 [2.EA]	67	2266000	BEARING BALL - STEEL [2.EA]	121	2261900	BRACKET - CONDUIT
22	406170	THRUST WASHER - STEEL	68	2266115	BEARING CONE	122	2301310	SCREW - 8 - 18 X 1/2 [2.EA]
23	405171	THRUST WASHER - NYLATRON [2.EA]	69	2261615	COLLAR HALF - ZINC - [2.EA]	123	2263210	BRACKET - CONDUIT ADJUSTMENT
24	144-049	FLANGE BEARING (SERVICE ONLY)	70	2263452	SCREW - 1/4 - 20 X 3/4 [2.EA]	124	2262720	SPRING - CONDUIT ADJUSTMENT
25	2069061	MOTOR ASSEMBLY 12V 3.25 5SPC	71	2260264	COVER - CTR BOX A/T	125	2263462	SCREW - 1/4 - 20 X 2 SS PPH
26	2032063	TUBE (COMP) W/CSK HOLE 42"	72	2372100	SCREW - 8 - 18 X 5/8 THD [4.EA]	126	2261225	LEADWIRE - BATTERY
27	1378126	PROP KIT INCL. 27, 28, 29, 30	73	2265627	DECAL - COVER (30AT)	127	2020700	TERMINAL RING, 3/8" [2.EA]
28	2061125	PROPELLER WEEDLESS WEDGE	74	2260150	POINTER DISC TRNSLCNT RED	128	2256300	TIE WRAP - 5.5" BLACK
29	2151726	WASHER - 5/16 STD SS	75	2265800	DECAL - INDICATOR	129	2263201	CLAMP WIRE HARNESS MICRO
30	2053101	NUT - PROP NYLOC	76	2053414	SCREW - 8 - 32 X 1/2 TRI-LOBE [3.EA]	130	2332103	SCREW - 8 - 20 X 3/8 THD
31	2092600	PIN - DRIVE (95-4HP'S) (SS)	77	2267800	GEAR - INDICATOR	131	2260301	CONNECTING WIRE (SWITCH)
32	2006603	DECAL - LOWER UNIT, WHITE	78	2301310	SCREW - 8 - 18 X 1/2 (SS)	132	2260312	WIRE, BLK W/WHT - 19 1/2
33	2771970	STD - BOWMT FW 30, 33, 36AT	79	2375400	SHRINK TUBE - 1/4OD X 1-3/4 [2.EA]	133	2260322	WIRE, BLK W/BLUE - 12"
34	2264221	ARM - UPPER, STD, FW	80	2355410	SHRINK TUBE - 3/8 OD X 2 [2.EA]	134	2266414	BOTTOM PLATE MAX FOOT PEDAL
35	2265120	BUMPER (UPPER ARM)	81	2232360	PULLEY - CABLE DRUM	135	9953104	SCREW - 8 X 1/2" (S/S) [8.EA]
36	2774310	ARM - LOWER FW ASSEMBLY [INCL 34, 45, 46, 47, 48, 49, 50, 56]	82	2261730	WASHER - NYLON A/T	136	2265606	DECAL - ALL TERRAIN FOOT PEDAL
37	2254341	ARM - LWR FW	83	2776203	TOP BEARING RACE/PINION	137	2262531	CONTROL BOX - PLASTIC
38	2263900	MOTOR REST - 565 TURBO	84	2263410	SCREW - 8 - 32 X 5/16 (ZN PL) [2.EA]	139	2267800	GEAR - INDICATOR [2.EA]
39	2251942	BOW PLATE - D C (MCHD)	85	2790002	FOOT PEDAL/PLUG ASSEMBLY (AT)	140	2262220	INDICATOR - DRIVE
40	2293801	TUBE LOCK - "D"	86	2263700	PUSH - BUTTON FOOT PEDAL	141	2261905	BRACKET/INDICATOR
41	2264705	INSERT - HINGE BASE (STD MT)	87	2302732	SPRING - LOWER PEDAL S/S	142	2301310	SCREW - 8 - 18 X 1/2 (S/S)
42	2260506	HINGE - PIN (HEADLESS) ZINC [2.EA]	88	2264020	SWITCH MOMENTARY	143	2994803	BAG ASSEMBLY - (INCL 143, 144, 145, 146)
43	2150400	PULL - GRIP	89	2265140	BOOT - MICROSWITCH	144	2153501	BOLT - MOUNTING W/STGD [4.EA]
44	2236000	BEARING NYLINER - [2.EA]	90	2262114	SCREW - MOUNTING/SWITCH [2.EA]	145	2151726	WASHER - 5/16 STD [4.EA]
45	2303431	SCREW 1/4 - 20 X 5/8"PPH [4.EA]	91	2233100	NUT - SWITCH MOUNT [2.EA]	146	2153100	NUT - 5/16 - 18 MOUNTING [4.EA]
46	2293511	BOLT - UPPER ARM W/LOCTITE [4.EA]	92	2264026	SWITCH - S SPEED		2301720	WASHER - MOUNTING RUBBER [6.EA]
47	2293500	BUSHING - SHOULDER (UPPER ARM) [2.EA]	93	2261701	LOCKWASHER - STAR			
48	2152610	SPRING - PIN (LOCKEAR)	94	2263105	NUT - HEX			
49	2233600	LOCK BAR - (BOW MOUNT)	95	2261715	SPACER - SWITCH 5 SP MODELS			
			96	2260170	KNOB - SPEED CONTROL (5 SPD)			

30 AT - 42"

* THIS ITEM IS PART OF AN ASSEMBLY. THIS ITEM CANNOT BE SOLD SEPARATELY DUE TO MACHINING AND /OR ASSEMBLY THAT IS REQUIRED.

All Terrain Bowmount Series Wiring Diagrams

30AT, 36AT, 40AT, 42AT, 50AT

