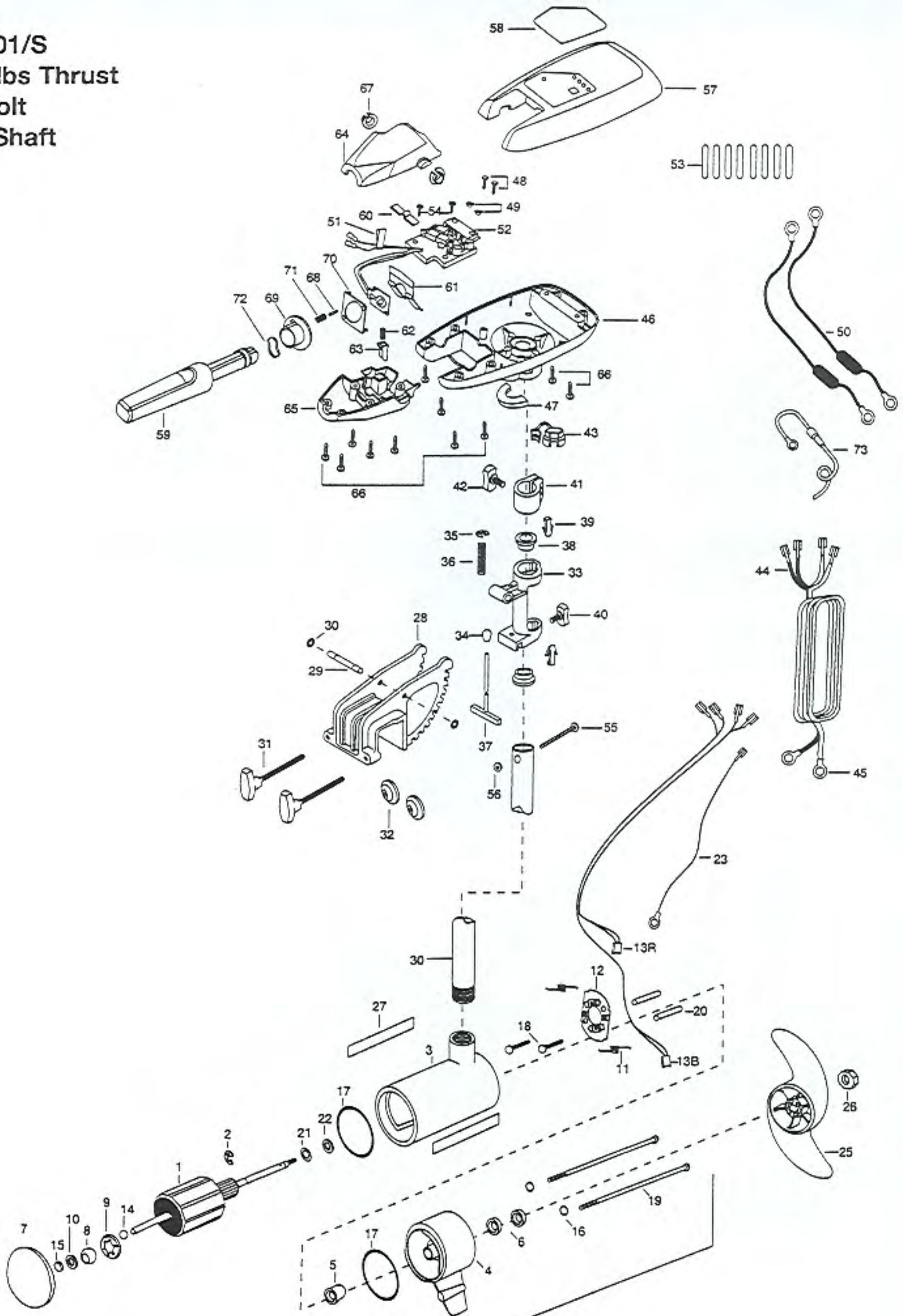


RT101/S
101 lbs Thrust
36 Volt
42" Shaft



In the U.S.A., replacement parts may be ordered directly from MINN KOTA Parts Dept., JWA MARINE, 706 Howard Ave., Mankato, Minnesota 56001. In Canada, parts may be ordered from any of the Canadian Authorized Service Centers shown on the enclosed list. Be sure to provide the part and SERIAL numbers of your motor when ordering parts. Please use the correct part numbers from the parts list. Payment for any parts ordered from the MINN KOTA parts department, may be by cash, personal check, Discover Card MasterCard or VISA. To order, call 1-800-227-6433 or FAX 1-800-527-4464.

Fuera de los Estados Unidos, consultar la lista anexa para ubicar el Centro de Servicio autorizado MINN KOTA. No dejar de incluir el número del MODELO y el número de SERIE del motor para el cual se solicitan las piezas. Usar siempre los números de pieza correctos indicados en la lista de piezas.

Hors de États-Unis, voir la liste ci jointe pour le Centre de Service Agréé MINN KOTA le plus proche. Lors d'une commande, ne pas oublier de fournir le numéro de modèle et le numéro de série du moteur. Toujours mentionner le numéro de pièce exact figurant sur la liste des pièces de rechange.

Fora da América do Norte, consultar a lista anexa para identificar o Centro de Serviço Autorizado MINN KOTA. Não deixe de incluir o número do MODELO e o número de SÉRIE do seu motor ao pedir peças. Sempre use os números corretos das peças da lista de peças.

1	2-100-110	ARMATURE ASSEMBLY 36V VARS SW 57.5	■ 2771999	BRACKET & HINGE ASSEMBLY (SW)	56	2333101	NUT-HEX 10-24 UNC-2B NYLOCK	
2	788-040	RETAINING RING	28	2771932	BRACKET DIE CAST SW E-COAT	57	2300227	CONTROL BOX CVR (SW)
3	431-111	HOUSING ASSEMBLY- CENTER 4.0 TXT	29	2330500	PIN-HINGE (BRACKET) SS	58	2095667	DECAL-COVER RT101/S
4	2-300-013	BRUSH END HOUSING ASSEMBLY	30	2333100	NUT-SPEED SS [2.EA]	59	2990915	HANDLE ASSEMBLY W/O U-JOINT
5	144-017	BEARING -FLANGE (SERVICE ONLY)	31	2011376	SCREW-CLAMP/NEW KNOB SS [2.EA]	60	2302742	SPRING-DETENT (OFF) SS
6	880-025	SEAL [2.EA]	32	2331700	WASHER-CLAMP SCREW 1.5 [2.EA]	61	2302743	SPRING-DETENT (HANDLE-TILT)
7	2-400-112	PLAIN END HOUSING ASSEMBLY	33	2031855	HINGE-MACH. IN-HOUSE SS	62	2302745	SPRING-RELEASE BUTTON SS
8	144-021	BEARING -SPHERICAL	34	2010100	KNOB-TILT	63	2303720	RELEASE BUTTON-HANDLE
9	784-025	BEARING RETAINER	35	2333001	E-RING- SS	64	2060411	HANDLE (TOP HALF) MAXIMIZE
10	991-040	WASHER FELT	36	2332700	SPRING- (T-BAR) SS	65	2060415	HANDLE (LOWER HALF)
11	975-041	SPRING -TORSION [2.EA]	37	2033601	T-BAR (E-COAT)	66	2303412	SCREW-6-20 X 5/8 SELF TAP [11.EA]
12	738-004	BRUSH PLATE -4" TERMINAL	38	2037300	BUSHING-HINGE [2.EA]	67	2060005	BEARING-HANDLE PIVOT [2.EA]
13R	409071	BRUSH / RED WIRE	39	2062800	TENSION BLOCK- "SNAP IN" [2.EA]	68	2302600	PIN-ACTUATOR
13B	409072	BRUSH / BLACK WIRE	40	2011386	SCREW-TENSION/NEW KNOB SS	69	2302850	ACTUATOR-CAM
14	116-025	BALL -STEEL	41	2061520	COLLAR-DEPTH	70	2302851	ACTUATOR-FWD/REV
15	303-043	THRUST DISC- METAL	42	2011366	SCREW-COLLAR/NW KNOB SS	71	2302740	SPRING- (ACTUATOR)
16	701-009	O-RING -THRU BOLT [2.EA]	43	2052900	STRAIN RELIEF-C.CORD/SP.C	72	2302741	SPRING-CAM (ZNC PLTD STEEL)
17	701-043	O-RING [2.EA]	44	2090600	LEADWIRE (10 GA) RINGS	73	2060310	CONNECT' GROUND WIRE-FUSED
18	830-027	SCREW -SELF THREADED 10-32 X 2" [2.EA]	45	2020700	TERMINAL RING, 3/8" [2.EA]			
19	830-096	THRU BOLT 12-24 X 11.56" SS [2.EA]	46	2062587	CONTROL BOX, SW, .725 BORE			
20	973-025	SPACER -BRUSH PLATE [2.EA]	47	2061513	COLLAR-CTRL BOX (SLT-WTR)			
21	990-051	WASHER-THRUST, STEEL	48	2301310	SCREW-8-18 X 1/2 SS [2.EA]			
22	990-052	WASHER- NYLATRON	49	2301710	WASHER-INSUL. (TRANSF. BAR) [2.EA]			
23	630-064	GROUND WIRE- GREEN	50	2998200	CIRCUIT BRKR ASSEMBLY, 36V- [2.EA]			
■	2317052	MOTOR ASSEMBLY 36V VARS SW 57	51	2305810	TAG-AIR SWITCH LEADS			
24	2032053	TUBE (COMPOSITE) 42"	52	2264013	CTRL BOARD ASSEMBLY-RT 101			
25	2331130	PROPELLER (W.WDG) MAX101	53	2305400	SHRINK TUBE-3/8 OD X 1-1/ [8.EA]			
26	2093101	NUT-PROP, NYLOC (LARGE) MAX	54	2372100	SCREW-8-18 X 5/8 THD* SS [2.EA]			
27	2006603	DECAL- LOWER UNIT WHITE	55	2263406	SCREW-10-24 X 2 (SS) PPH			

277196

RT101/S

* This item is part of an assembly. This item cannot be sold separately due to machining and /or assembly that is required.

PARTS LIST

RipTide Transom Series Wiring Diagrams

RT101/S

