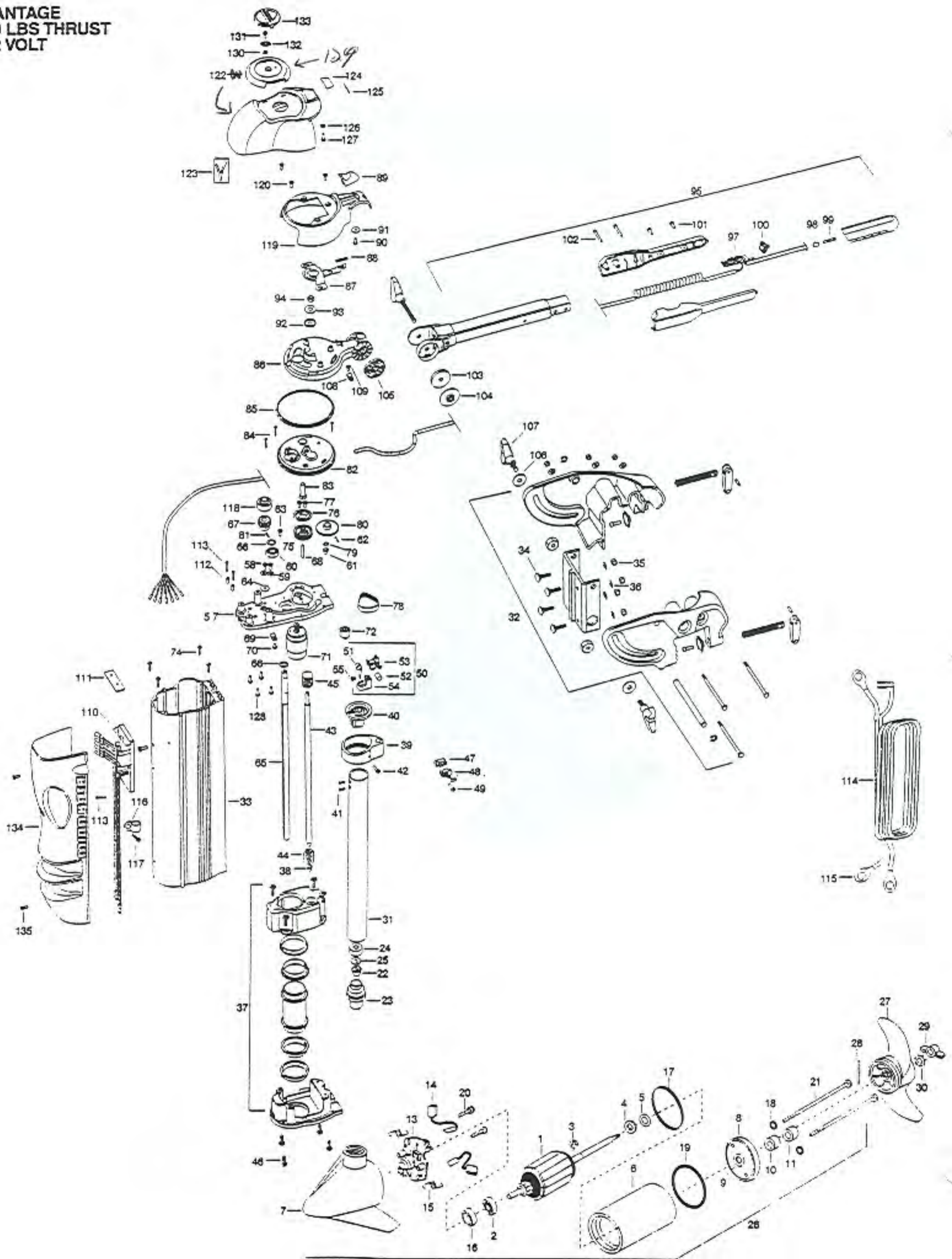
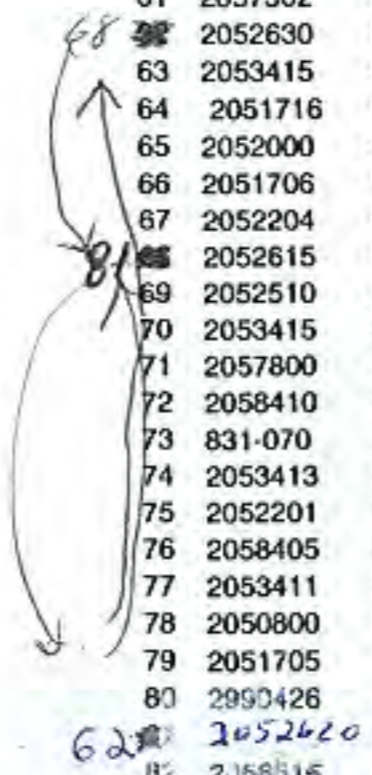


VANTAGE  
50 LBS THRUST  
12 VOLT



NOTE: AT THE TIME OF THIS PRINTING, OUR AUTHORIZED SERVICE CENTERS ARE NOT SET-UP TO REPAIR THIS UNIT.  
 YOU MAY ARRANGE FOR SERVICE BY CALLING MINNKOTA AT: 1-800-227-6433 OR 1-507-345-4623 OR FAX 1-800-527-  
 OR RETURNING YOUR UNIT, IN THE ORIGINAL PACKAGE, TO THE MINNKOTA FACTORY SERVICE DEPARTMENT.  
 EXPECT MOST SERVICE CENTERS TO BE FULLY CAPABLE BY 1-2000.  
 PLEASE INCLUDE PROOF OF PURCHASE, SERIAL NUMBER AND PURCHASE DATE FOR WARRANTY SERVICE.

1	7-100-098	ARMATURE ASSEMBLY 12V 3-5/8"	50	2990400	TAPE SPRING ASSEMBLY (VANTAGE	100	2050101	KNOB-SPEED CONTROL
2	140-010	BEARING- BALL	51	2052705	SPRING, CONSTANT FORCE	101	2012100	SCREW-8-18 X 5/8" THD CUT(2 REQ'D)
3	788-015	RETAINING RING	52	2052610	PIN-PIVOT 7/16" O.D.	102	2053412	SCREW 8 X 1.5" TYPE 25 (2 REQ'D)
4	990-067	WASHER- STEEL THRUST	53	2051920	BRACKET-SPRING	103	2051736	WASHER-URETEN, ID.4 X OD 1
5	990-070	WASHER- NYLATRON	54	2052305	WIRE GUIDE (VANTAGE)	104	2053115	NUT-WASHER, HANDLE ASSEMBLY
6	7-200-101	CENTER HOUSING FIELD ASSEMBLY	55	2053418	SCREW-#4-40X1/4" TYPE F,PPH	105	2050015	RACHET-DISK, HANDLE ASSEMBLY
7	421-065	BRUSH END HOUSING ASSEMBLY	56	2990405	TOP PLATE ASSEMBLY (VANTAGE)	106	2051737	WASHER-FLAT, ID.406 X OD.8
8	2-400-101	PLAIN END HOUSING ASSEMBLY	57	2051900	TOP PLATE, VANTAGE	107	2050921	HANDLE, TENSION, LONG
9	144-049	BEARING- FLANGE	58	2053414	SCREW-#8-32 X 1/2" TRI-LOBE(2 REQ'D)	108	2052511	CABLE CLAMP, 1/4" (2 REQ'D)
10	880-003	SEAL	59	2051717	WASHER-FOR #8 SCREW (2 REQ'D)	109	2053415	SCREW-8-32X3/8" TRI-LOBE (3 REQ'D)
11	880-006	SEAL W/SHIELD	60	2057306	BEARING-BALL (VANTAGE)	110	2054035	CNTRL BOARD ASSEMBY, 12V-MAIN
12	7-600-114	BRUSH PLATE ASSEMBLY	61	2057302	BEARING-UPPER, LIFT SCREW	111	2315105	INSULATING PAD
13	738-036	BRUSH PLATEW/HOLDER	62	2052630	PIN, CLUSTER GEAR	112	2261712	SHOULDER WASHER (2 REQ'D)
14	186-036	BRUSH (2 REQ'D)	63	2053415	SCREW-#8-32 X 3/8 TRI-LOBE	113	2053407	SCREW-#8-32 X .75 PPH (3 REQ'D)
15	975-041	SPRING - TORSION (2 REQ'D)	64	2051716	WASHER-FENDER #10	114	2051225	LEADWIRE, 12V, 3 CONDUCTOR
16	725-050	BRUSH RETAINER	65	2052000	SHAFT-STEERING, VANTAGE	115	2020700	TERMINAL RING, 3/8" (2 REQ'D)
17	337-036	GASKET	66	2051706	WASHER-SPRING SUPPORT (2 REQ'D)	116	2052512	CABLE CLAMP, 1/2" VANTAGE
18	701-008	O-RING- THRU BOLT (2 REQ'D)	67	2052204	GEAR, STEERING TUBE	117	2053415	SCREW-#8-32 X 3/8" TRI-LOB
19	701-081	O-RING (2 REQ'D)	68	2052615	PIN-DRIV-LOK 1/8 X 1 1/8"	118	2052210	ROLLER-STEERING SHAFT
20	830-002	SCREW - SELF-THD 8-32X1. (2 REQ'D)	69	2052510	CABLE CLAMP, 3/16" VANTAGE	119	2050200	COVER-CONTROL HEAD
21	830-042	THRU BOLT 10-32 X 8.83 (2 REQ'D)	70	2053415	SCREW-#8-32 X 3/8" TRI-LOBE	120	2053414	SCREW-8-32 X 1/2" T-LOBE(3 REQ'D)
22	1389-015	GROMMET - STRAIN RELIEF	71	2057800	MOTOR-LIFT (12V) VANTAGE	121	2012100	SCREW-8-18 X 5/8" THD (3 REQ'D)
23	979-015	STRAIN RELIEF - BODY	72	2058410	TENSIONER-BELT (VANTAGE)	122	2050210	SHROUD-CONTROL HEAD
24	979-016	CAP - STRAIN RELIEF	73	831-070	SCREW - TORX W/SPLTWASH(3 REQ'D)	123	2055612	DECAL-SHROUD (VNTGE) (2 REQ'D)
25	990-015	WASHER - MTR SEAL	74	2053413	SCREW-10-16X1" TYPE AB,HEX(4 REQ'D)	124	2055601	DECAL-COVER, 12V
26	2099070	MOTOR ASSEMBLY 3-5/8", 12V	75	2052201	PULLEY-CLUSTER	125	2055610	DECAL-COVER, LED
27	2091150	PROPELLER (W.WEDGE)T PROS	76	2058405	FLANGE-PULLEY (VANTAGE)	126	2051712	WASHER- .152 ID, .50 OD .06
28	2092600	PIN-DRIVE (95-4HP'S) (SS)	77	2053411	SCREW 4-40 X 1/4" PPH(2 REQ'D)	127	2302100	SCREW-6-20 X 1/2" THD CUT
29	2053100	NOT-PROP (MEDIUM)	78	2050800	BELT-DRIVE (VANTAGE)	128	2012100	SCREW-8-18 X 5/8" THD (4 REQ'D)
30	2051700	LOCKWASHER-PROP (MEDIUM)	79	2051705	WASHER-NYLON ID.312 X OD.	129	2050100	KNOB-POINTER, VANTAGE
31	2052010	TUBE-MOTOR, 1 3/4"	80	2990426	LIFT GEAR ASSEMBLY	130	2051717	WASHER-FOR #8 SCREW
32	2991820	TRANSOM BRACKET ASSEMBLY	81	2052620	PIN-DRIV-LOK 1/8 X 5/8	131	2332101	SCREW-8-32 X 1/2" (SS)
33	2056505	HOUSING EXTRUSION, MACHINE	82	2058515	CAP-LOWER, GEAR HOUSING	132	2371715	LOCKWASHER-STAR #8 ZINC
34	2053511	BOLT-CARRIAGE 5/16-18 1" (4 REQ'D)	83	2383500	BOLT-3/8-16 X 1.25	133	2056700	PLUG, POINTER, VANTAGE
35	2151726	WASHER-5/16 STD (S/S)(4 REQ'D)	84	2053402	SCREW-10-24 X 1" TRI-LOBE(3 REQ'D)	134	2050220	SHIELD-EXTRUSION, VANTAGE
36	2053103	NUT, 5/16-18 NYLOC (4 REQ'D)	85	2054600	O-RING, GEAR HOUSING	135	2053414	SCREW-#8-32X1/2" TRI-L (2 REQ'D)
37	2990420	LOWER SUPPORT CAGE ASSEMBLY	86	2056510	CAP-UPPER, GEAR HOUSING	136	2055611	DECAL-SHIELD (VANTAGE)
38	2057302	BEARING-UPPER, LIFT SCREW	87	2057200	LATCH (VANTAGE)			
39	2051510	YOKE-LIFT SCREW	88	2052711	SPRING, LATCH RETURN			
40	2056200	BEARING RACE-YOKE	89	2050102	KNOB-LATCH (VANTAGE)			
41	2053401	SCREW-10 X 1/2", TYPE 25,(2 REQ'D)	90	2353401	SCREW-10-16 X 1/2" STALGDT			
42	2353401	SCREW-10-16 X 1/2" STALGD	91	2051716	WASHER-FENDER #10			
43	2053400	SCREW-LIFT, 1/2-10 ACME	92	2151730	WASHER-CUP (HINGE BRACKET)			
44	2052707	SPRING-COIL, SOFT STOP	93	9950156	WASHER-3/8" FLAT (ZINC)			
45	2990429	COIL SPRING/WASHER ASSEMB	94	2053107	NUT-3/8-16", TOPLOCK			
46	2053413	SCREW-10-16X1" TYPE AB,HEX (4 REQ'D)	95	2990950	HANDLE/CTRL BOARD ASSEMBLY			
47	2053200	WIRE CLAMP, LEFTHAND	96	2990920	HANDLE ASSEMBLY, VANTAGE			
48	2053205	WIRE CLAMP, RIGHTHAND	97	2994005	CTRL BOARD ASSEMBLY-HANDLE			
49	2053417	SCREW-10-16X3/4" TYPE BT,PPH	98	2055115	BUTTON SWITCH ACTUATOR			
			99	2053700	PLUNGER, ON/OFF			



PARTS LIST

VANTAGE 50

# Vantage Transom Series Wiring Diagrams

## Vantage 50

